

2021 JON MCKEE PRIZE

Mikayla Williams

UNIVERSITY OF TENNESSEE

FACULTY ADVISOR - KEVIN STEVENS

LYCEUM

A traveling fellowship in Architecture



Ames Estate Emergence Pavilion

LF-8802

The Ames Estate

Ames Estate Emergence Pavilion is a cumulation of both experience and program that overlap and intermingle with one another. By doing so, a rich and inventive atmosphere is created that becomes more evident as people begin to occupy these spaces. There are numerous opportunities for community and individual inhabitation in and outside of the pavilion. The pavilion is an invitation to anyone in the surrounding community and beyond – drawing interest from individual endeavors to community driven programs such as smorgasbords, lectures, weddings, class field trips, and so many more.

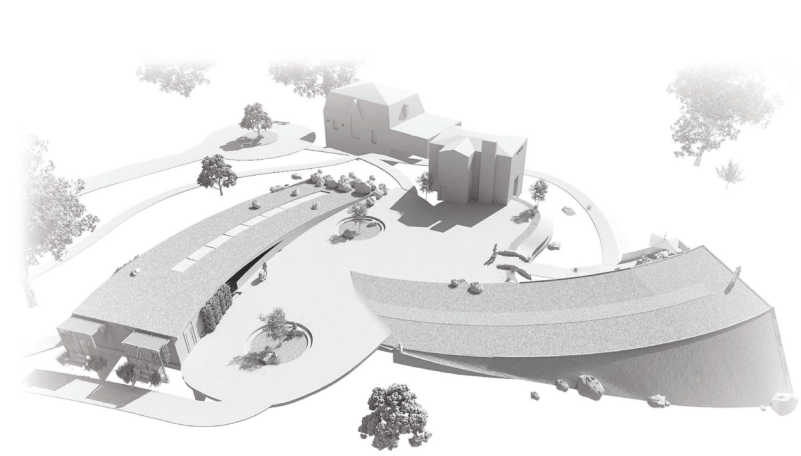
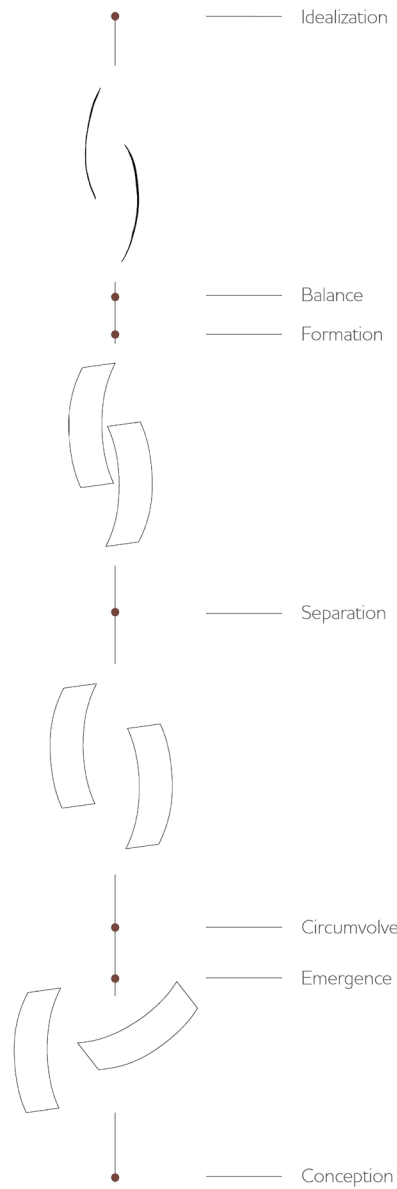
This new addition to the Ames Estate is not meant to replace with something "new", but to become more immersed in the landscape itself. Drawing on the very foundations of the origins of the Ames Estate, it is evident that there is a very strong connection to the existing landscape that Charles Eliot sought to preserve. Instead of creating a new landscape, the significance of the estate is to be in awe of the existing nature. With this, the pavilion itself seeks to ingrain this notion even further by essentially becoming a part of the landscape.

Architecturally, the two pavilions integrated into the existing landscape feature a heavy concrete construction that elevate two large masses that emerge upward from the landscape. Both pavilions are cantilevered out from the ground allowing for an open floor plan with an additive feeling of weightlessness. Although heavy in materiality, there is a contrast in heavy nature of the materiality and how it is perceived by the eye.



Site Plan

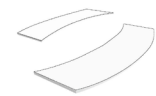
Ames Estate Emergence Pavilion is an invitation to those in the surrounding community and beyond



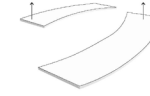
Aerial View

The strengths landscape architecture draws from its garden design heritage include: the Vitruvian design tradition of balancing utility, firmness and beauty; use of the word 'landscape' to mean 'a good place' - as the objective of the design process; a comprehensive approach to open space planning involving city parks, green-ways and nature outside towns; a planning theory about the contextualization of development projects; the principle that development plans should be adapted to their landscape context.

- Tom Turner



Formation



Emergence



Circumvolve

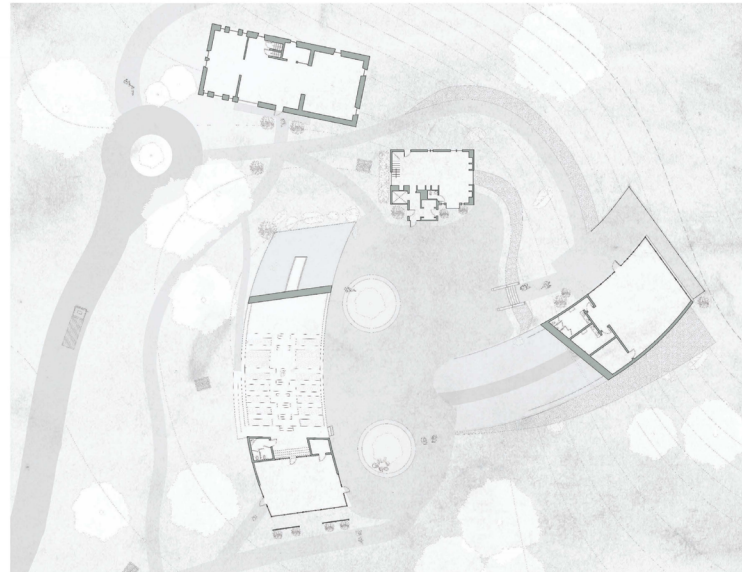
Creation

The diagrams shown here reveal the procession of form finding from idealization to conception

Roof Plan

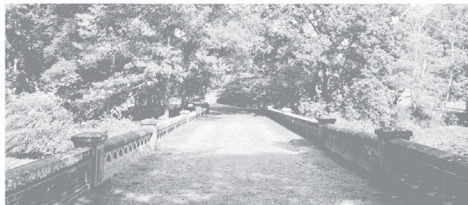


Plan



Synchronize

The forms of the pavilion are meant to emerge and embolden the existing Ames Estate. The project's goal is to become synchronous with the site and not overwhelm it.



Estate View



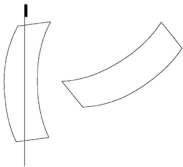
Existing Site View



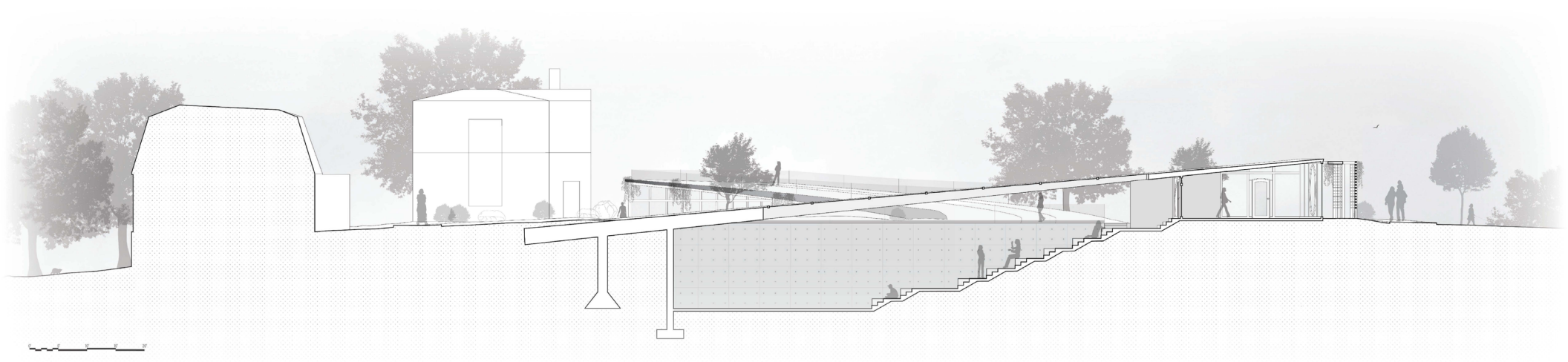
Landscape View

Transmutation

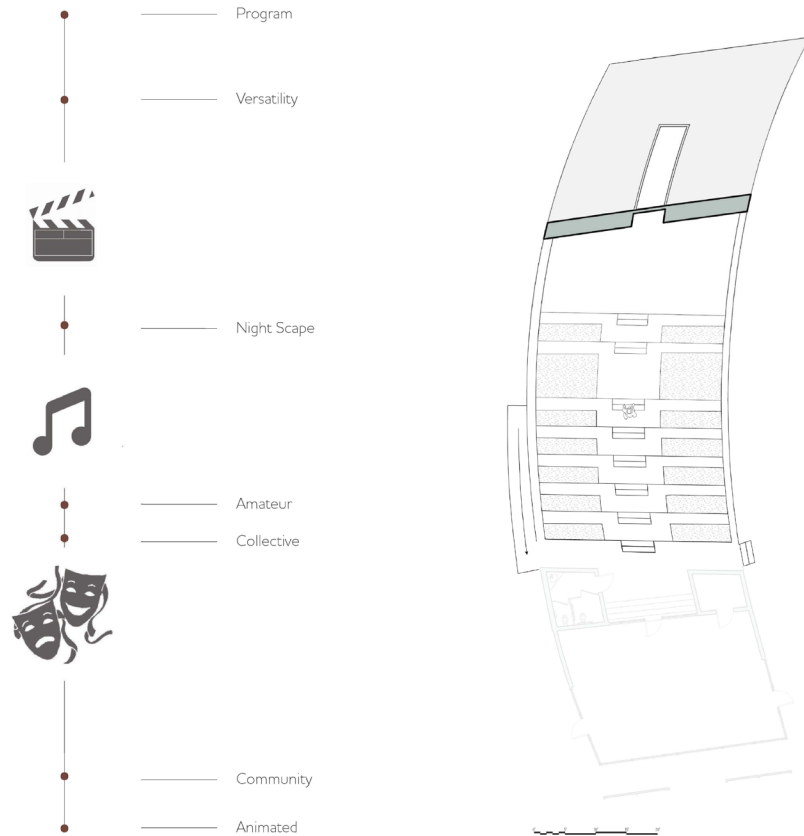
This section taken through the first portion of the pavilion shows the relationship between outdoor and indoor spaces. Both, although separate in nature, are under the same roof and features a procession from indoor to outdoor.



Early Conceptual Sketches



Amphitheater



A Space of Engagement

Day or night, the amphitheater is a space of engagement that intrigues a multitude of programs, age groups, genders, backgrounds, interests, and much more.

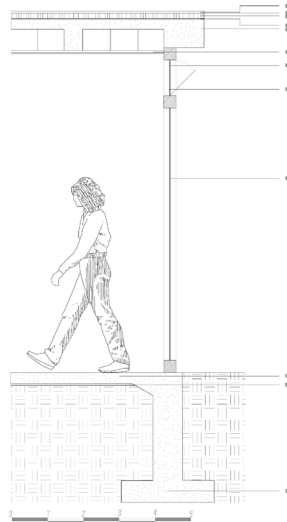
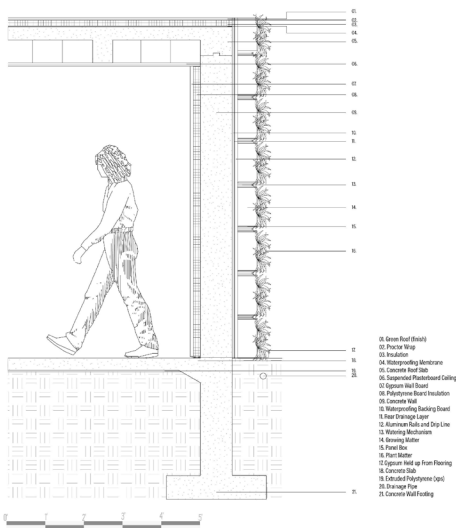


Midday Amphitheater Event

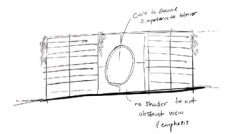
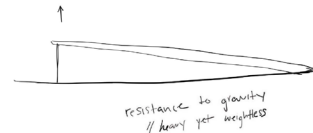


Amphitheater Movie Night

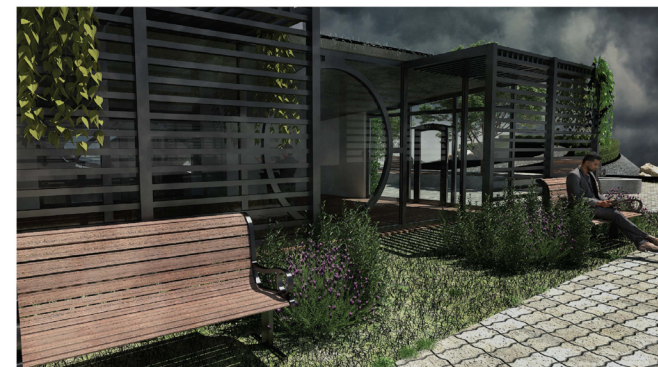
Assembly // A Stereotomic and Tectonic Angle



- 01. Green Roof (Roof)
- 02. Porous Slab
- 03. Insulation
- 04. Waterproofing Membrane
- 05. Concrete Roof Slab
- 06. Suspended Plasterboard Ceiling
- 07. Opposite Wall Slab
- 08. Waterproofing Membrane
- 09. Concrete Wall
- 10. Waterproofing Backing Board
- 11. Near Drainage Layer
- 12. Runway Ball and Stop Line
- 13. Waterproofing Membrane
- 14. Draining Layer
- 15. Green Soil
- 16. Plant Matter
- 17. Opposite Wall on Floor Slab
- 18. Concrete Slab
- 19. Structural Polypropylene (SPP)
- 20. Drainage Pipe
- 21. Concrete Wall Footing



Stereotomic View



Tectonic View

The pavilion features a heavy construction of concrete that protrudes from the earth. Although heavy in construction, there is also a weightlessness associated with the structure due to it being cantilevered out from the ground.

The pavilion also features a delicate tectonic construction. This quality is seen in the interior spaces and external shaders on the south facade.

Transmogrification

This section taken through both buildings show the connection between the interior and exterior spaces. Additionally, the scope of program and how they overlap and intermingle with one another is shown.

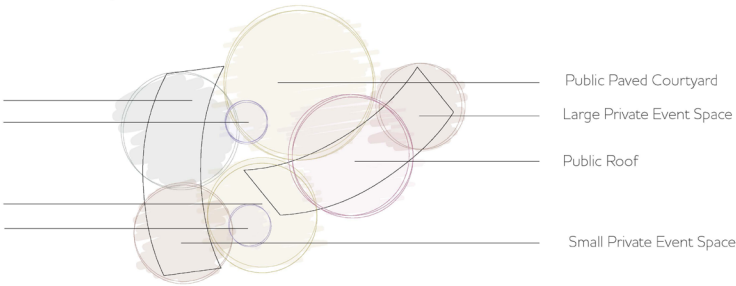
Embedded Nooks



Public and Private Spaces

Public Ampitheater
Public yet Private Nook

Public Paved Courtyard
Public yet Private Nook



Walkable Roof

Large Event Space

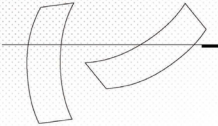
Transitional Walkway

Paved Courtyard

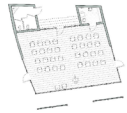
Embedded Nooks

Small Event Space

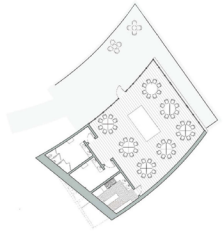
Ampitheater



Indoor Event Spaces



Approximately 900 sq. ft. the small event space can cater to more intimate affairs.



Approximately 2000 sq. ft. the large event space can cater to much larger programs, features two large bathrooms, and a fully functioning kitchen/storage room. Adjacent, is a deck that wraps around the building and acts as a buffer zone between interior and exterior spaces.

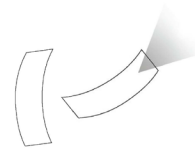


Lecture in small event space



Exterior qualities of the large event space

Outdoor Inclusion



The walkable roof is a testament of the admiration of the Ames Estate landscape. Additional outdoor spaces are the courtyard and embedded nooks.



Ambiance of Landscape



Procession of Landscape