

2021 MERIT

Grace Woo

BOSTON ARCHITECTURAL COLLEGE

FACULTY ADVISOR - SHAUN LYNCH

LYCEUM

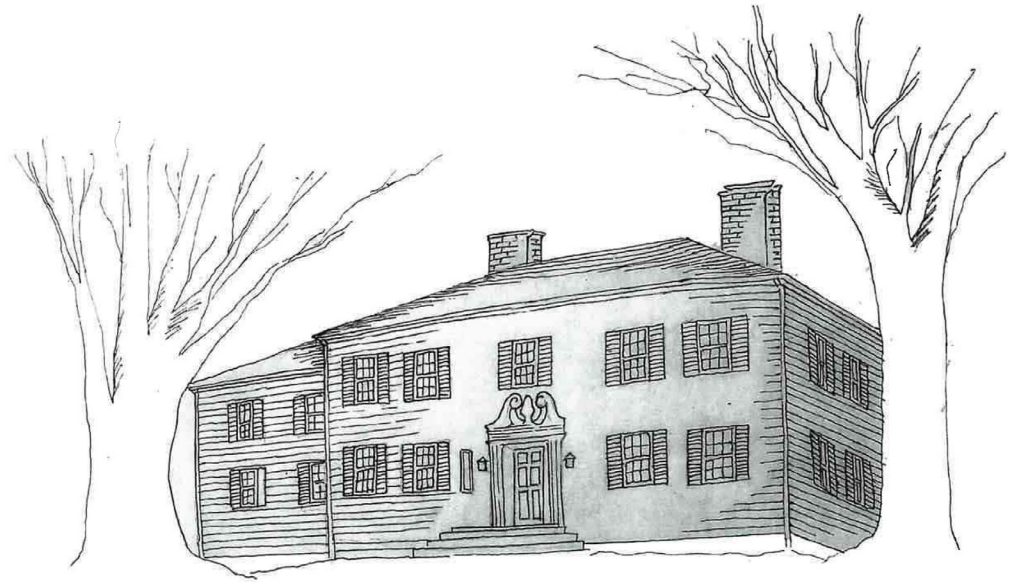
A traveling fellowship in Architecture



LF-8943

Ames Eco Pavilion

Once upon a time,
there was a big house in Easton, MA
that was going to be razed and
replaced with a pavilion.
But the house can also be a pavilion.
This is a story of how this house
becomes a beautiful pavilion...



First, the sidings and insulations are removed to reveal its beautiful wood frame. Second, interior partitions are removed to create an open space. Then part of the 2nd floor and ceiling are removed to create a skywalk. And the Cubes' restrooms and kitchen are renovated to meet codes and function.



before



after



Eco Pavilion

*The Town of Easton
will have an exquisite
wood frame pavilion.
Visitors will marvel
and study it. And
weddings and other
events can be held
at this 6,700 square
foot beautiful and
unique pavilion.*



first floor

*Intriguing venue
that no new build
can replicate. Complete
with scenic views
from the skywalk.*

*All by simply
revealing its
structure, using
what's already there.*



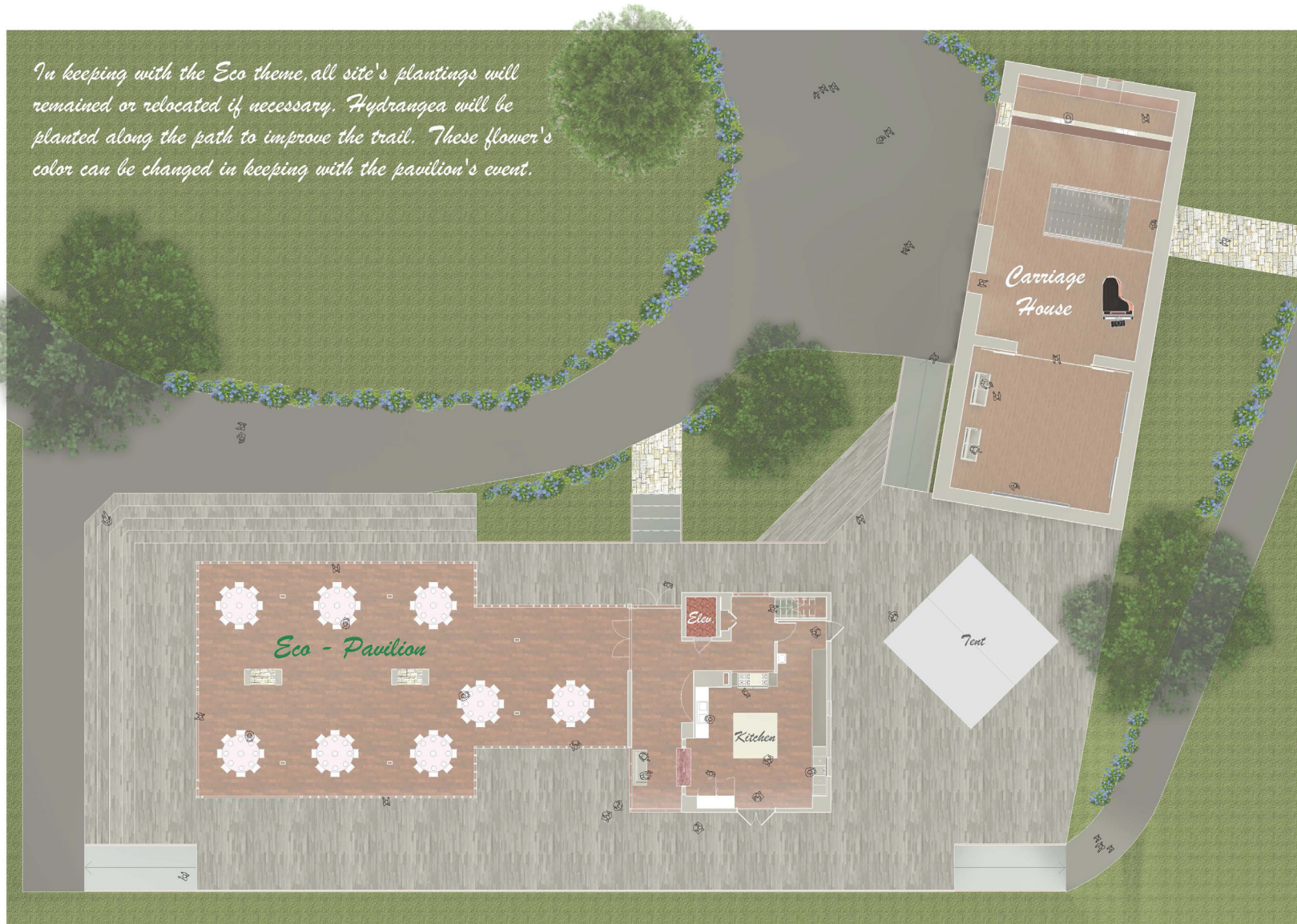
second floor

Interactive Board



Carriage House ~ ideal for small gathering and winter events

In keeping with the Eco theme, all site's plantings will remained or relocated if necessary. Hydrangea will be planted along the path to improve the trail. These flower's color can be changed in keeping with the pavilion's event.



Just as the Ames should removes to reveal a space, the idea is to remove rather than destroy.

For the way to the "Golden Age" of park is through what has been there for ages.

A new build can not take people back in time.

And why build to connect with nature by destroying the environment ?

The End.

