

2021 CITATION

Ethan Boerner

UNIVERSITY OF NEBRASKA

FACULTY ADVISOR - PETER OLSHAVSKY IV

LYCEUM

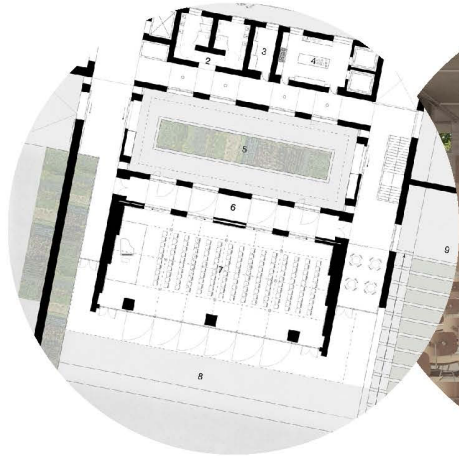
A traveling fellowship in Architecture

AMES ESTATE PAVILION

LF - 9197

Lyceum Fellowship 2021





ADAPTABILITY

Attention to flexibility and inclusive, variable program



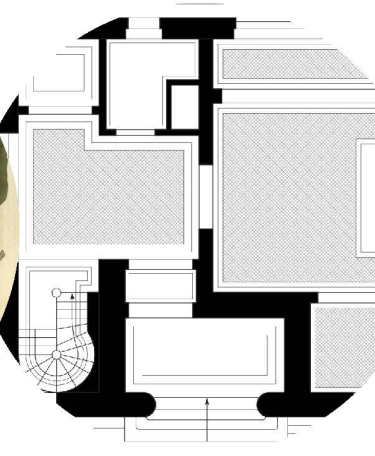
CHARACTER

Attention to visitor experience



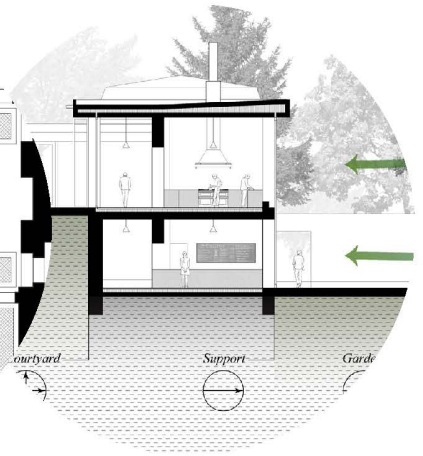
ENVIRONMENT

Attention to sun, wind, water, views, vegetation, etc.



REFERENCE

Attention to local structures and histories



STRUCTURE

Attention to construction and materials

Placemaking:

“To capitalize on a local community’s assets, inspiration, and potential, with the intention of creating public spaces that promote people’s health, happiness, and well-being.”

This project explores placemaking by means of specific “attentions”. The Ames Estate, located in North Easton, Massachusetts, has a rich history at the intersection of architecture, agriculture, industry, and horticulture. The town also has a history of deliberate placemaking. The first generations of settlers altered the landscape by creating ponds - powering forges for the burgeoning iron industry. This industry shaped an identity for the town. The Ames family sculpted and curated the landscape into a private

paradise. Today, The Trustees’ efforts preserve and cultivate the estate as a public place. This proposal is the next step in the timeline; imagining the estate as a place of community.

These attentions - Adaptability, Character, Environment, Reference, and Structure - aim to coincide with and improve upon the existing qualities of the area. For example, using “reference” to reinterpret aspects of nearby buildings designed by H.H. Richardson as a way to tie into local

history, or by focusing on “adaptability” and “character” to create a place valuable to the community.

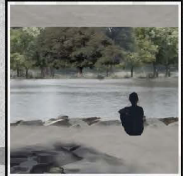
The goal of this proposal is not only to imagine the design of the event pavilion, but to consider how the area’s history of placemaking can be continued into the future.



GREENHOUSE
The greenhouse ruins are restored for visitors to explore the site's horticultural history, and acts as a place to cultivate and maintain that history.



ART STUDIO
The art studio is revitalized, holding art classes to the public and private space for local, established artists, set within the picturesque landscape of the estate.



LANDSCAPE MOMENTS
Small, discrete moments are scattered through the estate for visitors to discover, such as seating blending into a rocky edge of the pond with a vista of the tree line.



PAVILIONS
The estate is split into distinct landscaping zones, each characterized by different wildlife. This information is presented in miniature pavilions or landmarks.

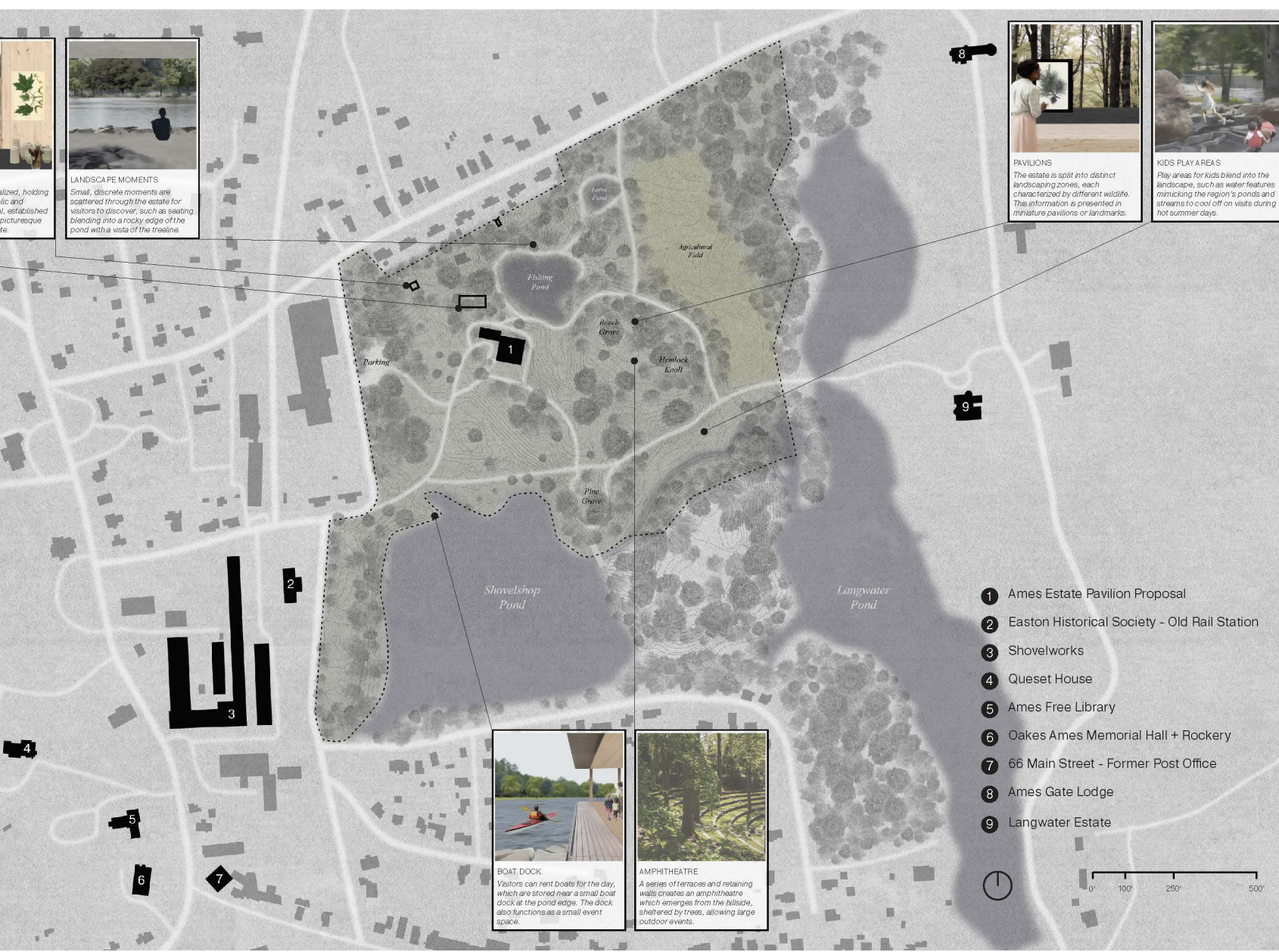


KIDS PLAY AREAS
Play areas for kids blend into the landscape, such as water features mimicking the region's ponds and streams to cool off on visits during hot summer days.

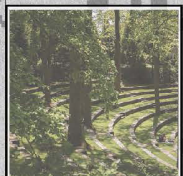
SITE PLAN

The proposed pavilion is centrally located on the estate grounds and in North Easton's Historic District, within walking distance of the Shovelworks, buildings designed by H.H. Richardson, and others which make up the historic district.

The full estate grounds offer countless opportunities for revitalizing the horticulture of the site, and creating places of leisure and community. Exactly where and how these proposed interventions would take place would be subject to public input.

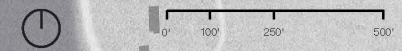


BOAT DOCK
Visitors can rent boats for the day, which are stored near a small boat dock at the pond edge. The dock also functions as a small event space.



AMPHITHEATRE
A series of terraces and retaining walls creates an amphitheatre which emerges from the hillside, sheltered by trees, allowing large outdoor events.

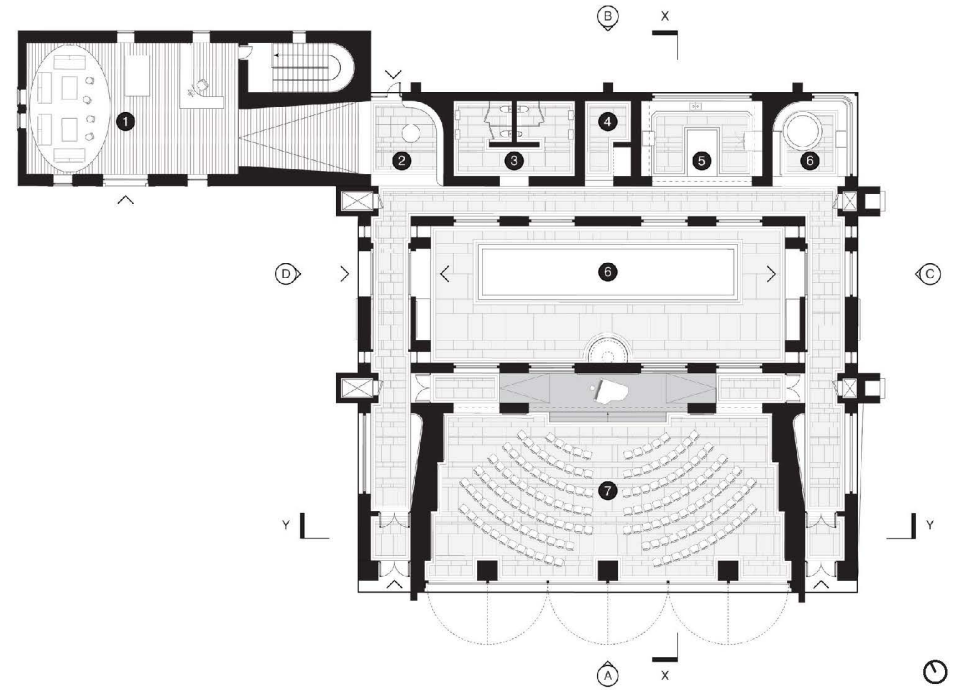
- 1 Ames Estate Pavilion Proposal
- 2 Easton Historical Society - Old Rail Station
- 3 Shovelworks
- 4 Queset House
- 5 Ames Free Library
- 6 Oakes Ames Memorial Hall + Rockery
- 7 66 Main Street - Former Post Office
- 8 Ames Gate Lodge
- 9 Langwater Estate





RESPONDING TO PLACE

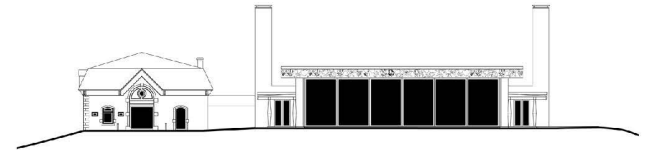
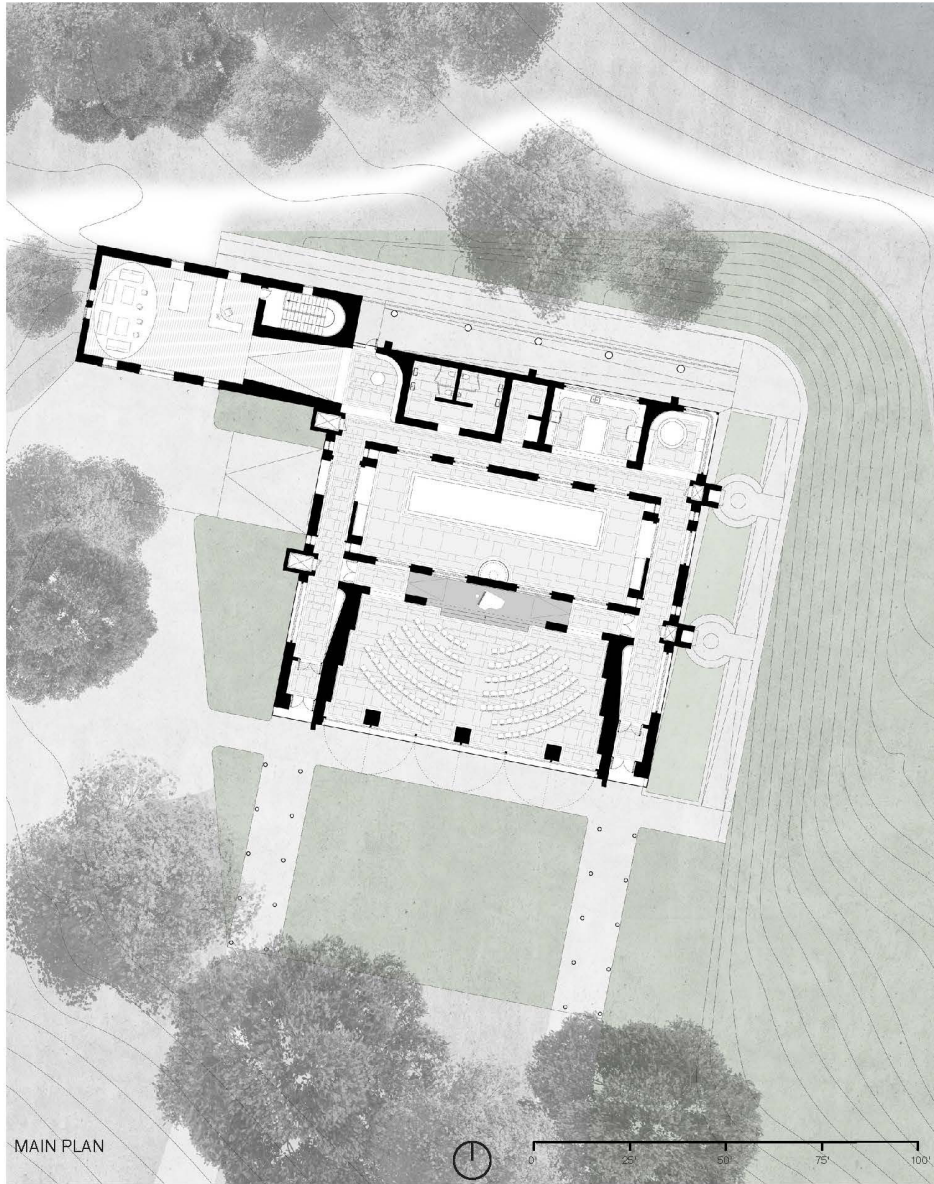
Forming the new heart of the North Easton Historic District, the design of the Ames Estate Pavilion uses local history as its guide. On the site of the two previous estate homes, the pavilion now becomes a home for the community. Nearby H.H. Richardson buildings, and other structures in the historic district, serve as the model - stout timber and masonry structures, rich with detail, simultaneously in harmony with, and in defiance of, the bucolic landscape.



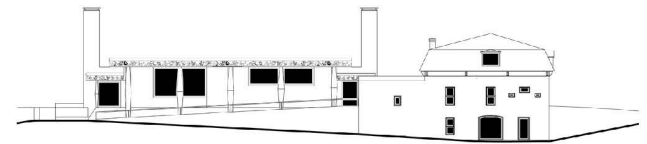
PROGRAM

The proposed pavilion fits within a 100' square and is directly linked to the renovated carriage house, which acts as an information center and small event space. Support program is arranged along the north side, separated from the main event hall to the south by a central courtyard.

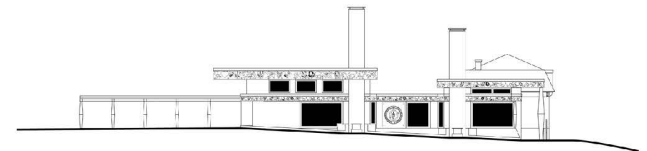
| | | |
|--------------|-------------------------|----------|
| 1 | Carriage House | 1,075 SF |
| 2 | Historical Display Area | 525 SF |
| 3 | Restrooms | 350 SF |
| 4 | Storage Closet | 135 SF |
| 5 | Catering Kitchen | 210 SF |
| 6 | Children's Area | 150 SF |
| 7 | Courtyard | 1,380 SF |
| 8 | Event Hall | 2,800 SF |
| Net Total: | | 6,625 SF |
| Circulation | | 1,725 SF |
| Gross Total: | | 8,350 SF |



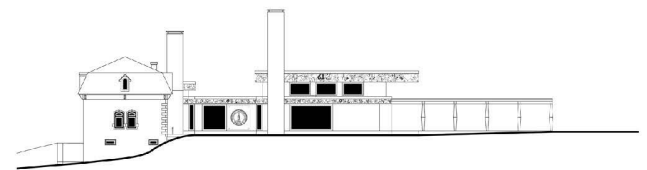
ELEVATION A



ELEVATION B

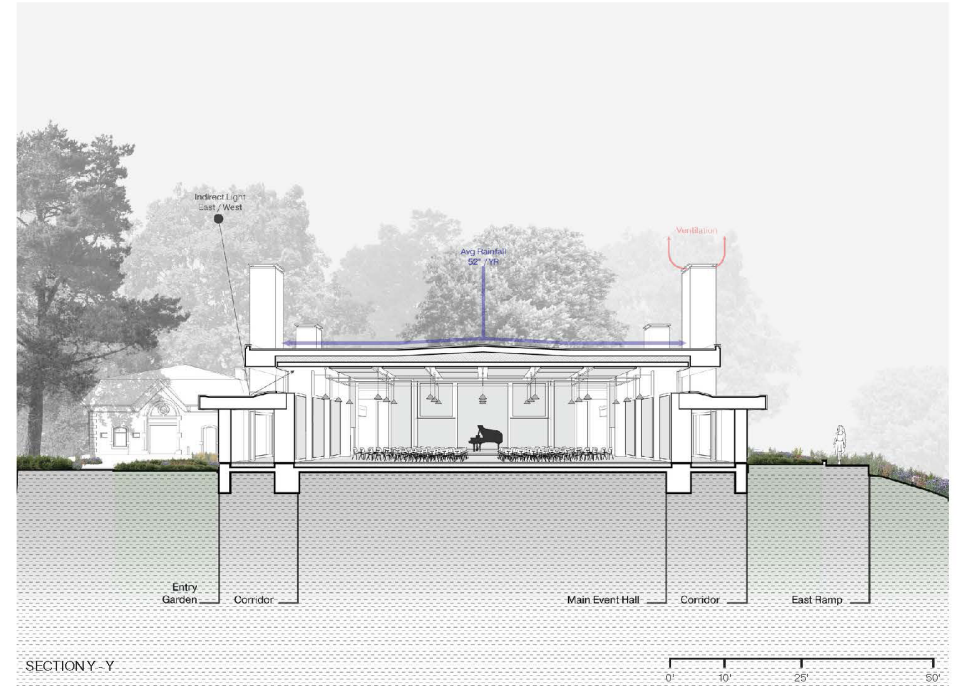
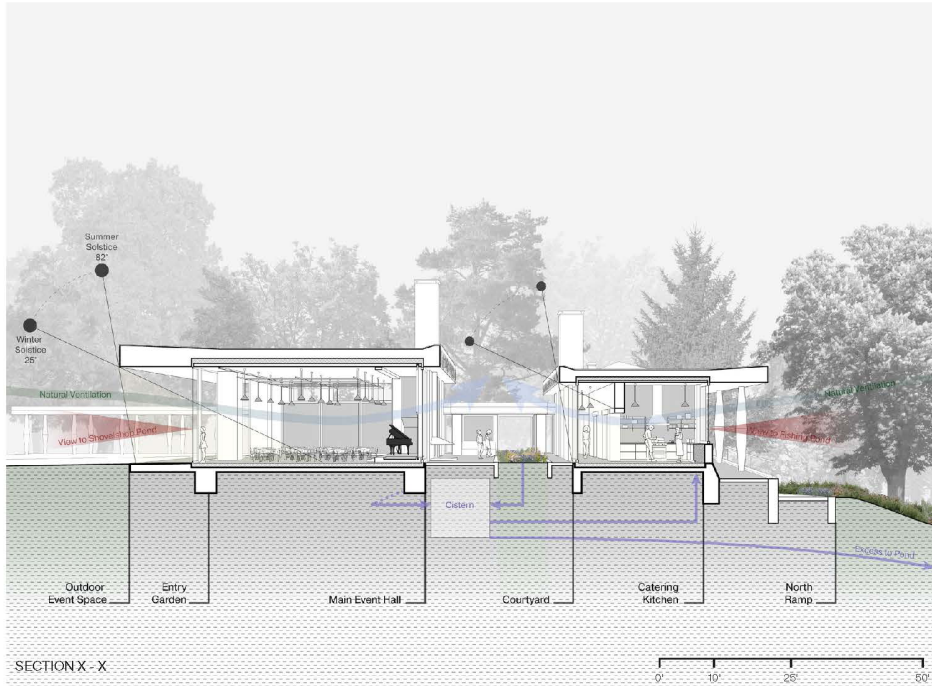


ELEVATION C



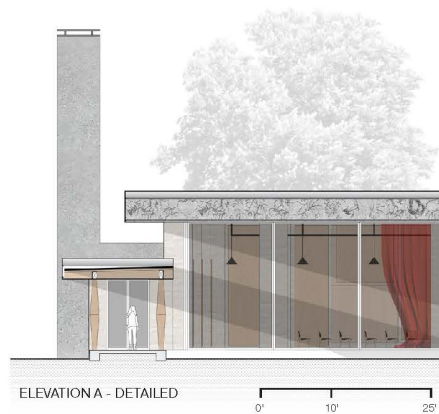
ELEVATION D





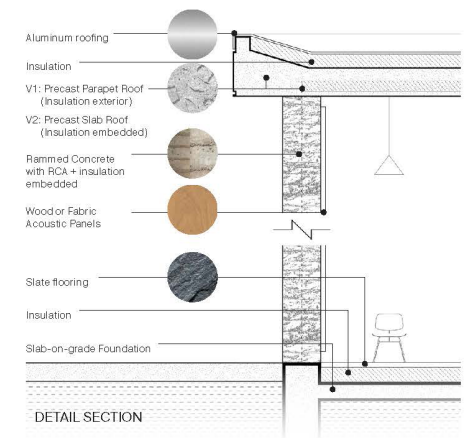
SITE CONDITIONS

The pavilion is situated to take advantage of site conditions such as cross-ventilation, water collection, daylighting and passive heating, and views to the landscape. When not in use, certain areas can be isolated to save on energy costs. The chimney-like forms serve outdoor firepits, but also discretely house mechanical systems and create light wells in the side corridors.



STRUCTURE

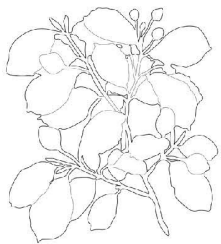
Precast concrete slabs and rammed concrete make up the structure. The aggregate incorporates fly ash, recycled concrete aggregate, various types of local earth and stone, resulting in a material unique to the site, while also helping mitigate environmental impact. The material palette relates to the richness found in the nearby H.H. Richardson designs.





MAIN ENTRY

The interior of the existing carriage house is renovated to hold the main entrance to the pavilion. Here visitors can find information about the estate and upcoming events. The space can also be used for small events.



SPACES OF LEARNING

Through the carriage house entrance, one enters a space which displays the history of the estate and its context. Down the hall is a learning space and play area for children with a view of the fishing pond.





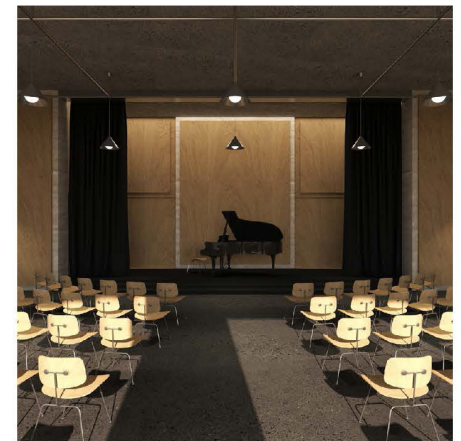
COURTYARD

The central courtyard acts as an alternate event space, or simply an area to take in the garden. The motif along the roof edge is inspired by botanical illustrations of plants found on the site and details of Richardson's buildings.



MAIN EVENT HALL

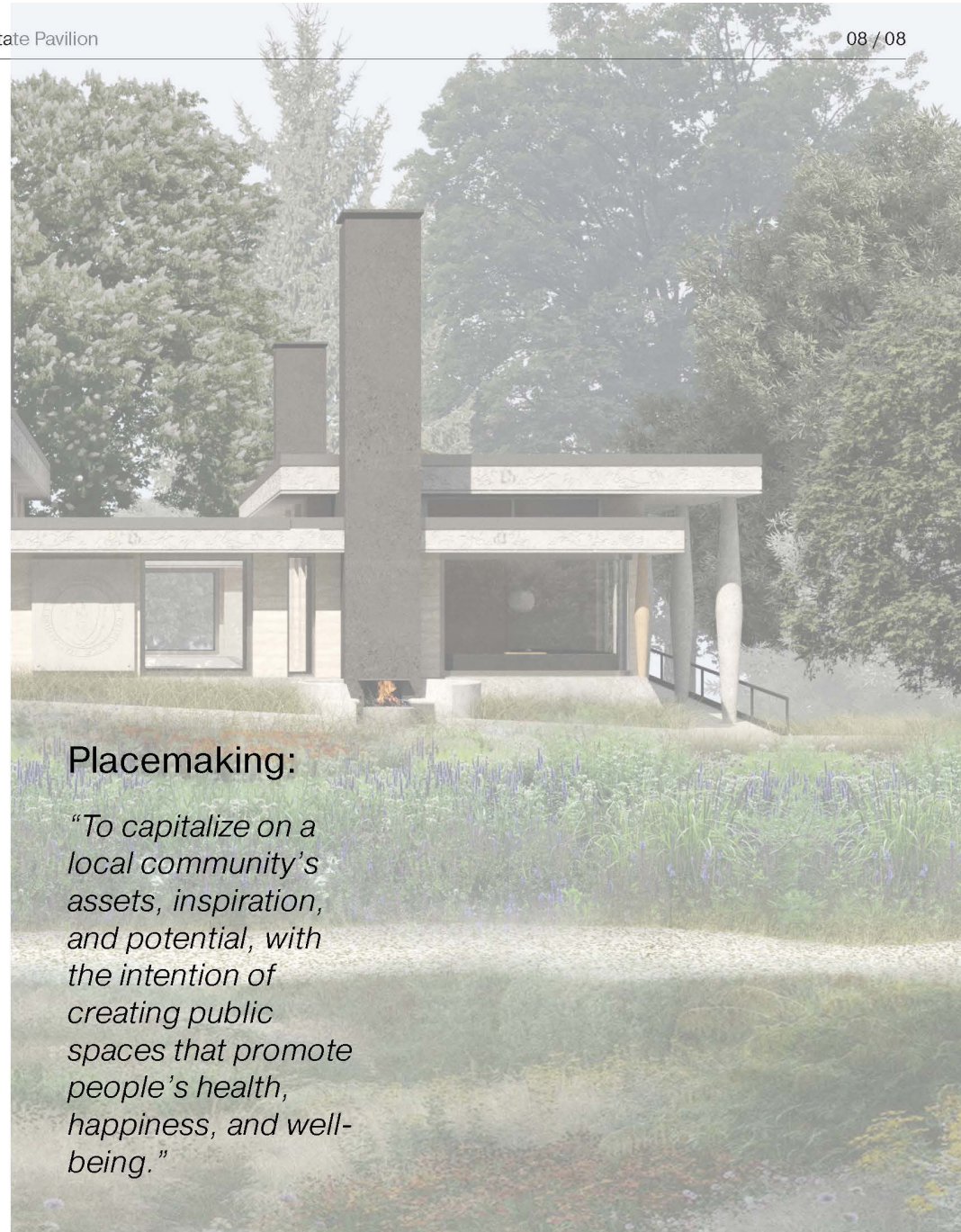
A flexible space for many types of gatherings. Lighting, furniture, panels, large doors, and curtains can be altered depending on the events being held throughout the year. There is a direct connection to the outdoor event spaces.





OUTDOOR EVENT SPACES

An outdoor space suitable for large gatherings, fire pits with dedicated seating, extensive gardens, and paths merge and connect the pavilion to the surrounding landscape.



Placemaking:

“To capitalize on a local community’s assets, inspiration, and potential, with the intention of creating public spaces that promote people’s health, happiness, and well-being.”