

2018 MERIT

Semin Park

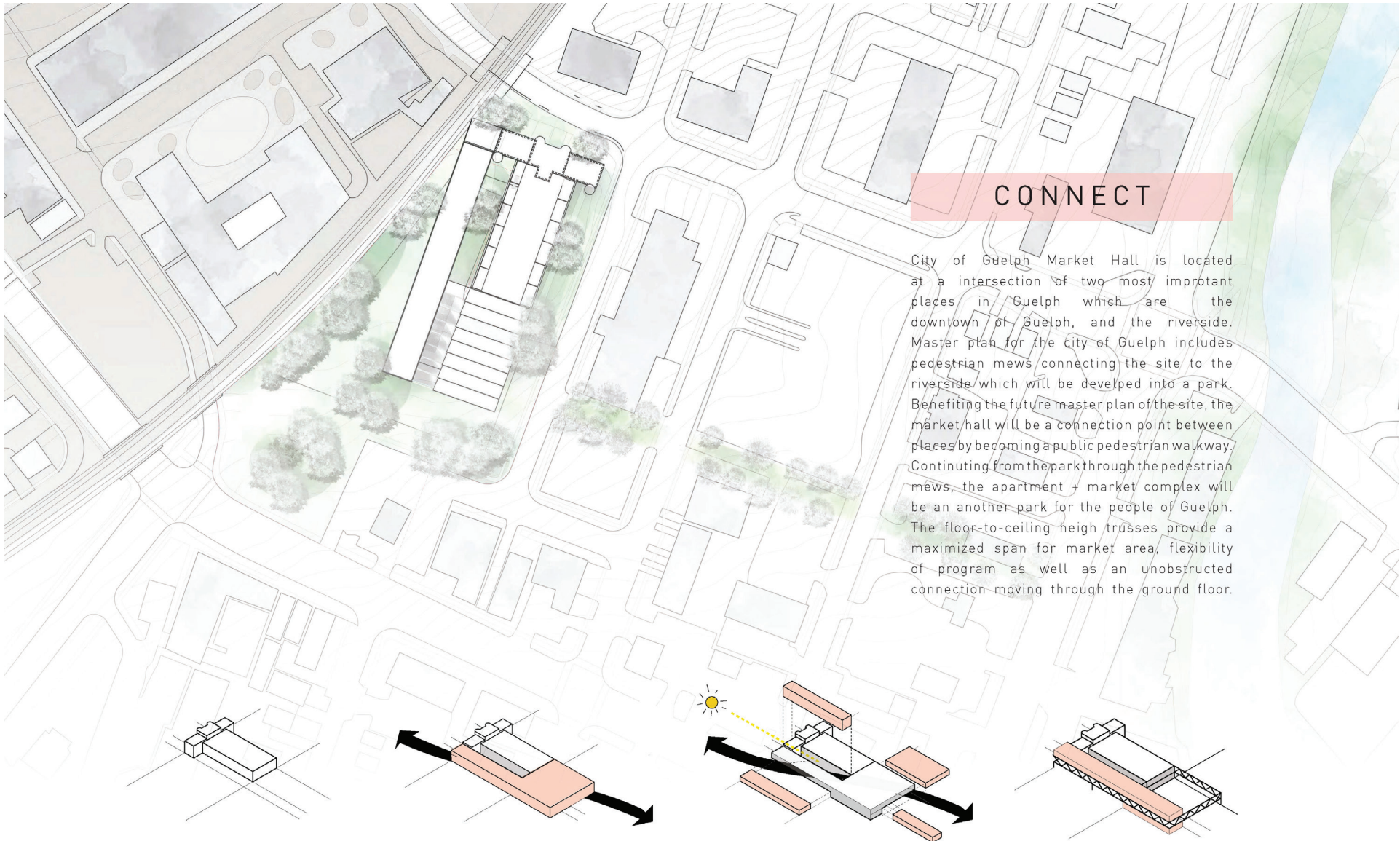
LYCEUM

A traveling fellowship in Architecture



CONNECT + TRANSFORM

City of Guelph Market Hall



CONNECT

City of Guelph Market Hall is located at an intersection of two most important places in Guelph which are the downtown of Guelph, and the riverside. Master plan for the city of Guelph includes pedestrian mews connecting the site to the riverside which will be developed into a park. Benefiting the future master plan of the site, the market hall will be a connection point between places by becoming a public pedestrian walkway. Continuing from the park through the pedestrian mews, the apartment + market complex will be another park for the people of Guelph. The floor-to-ceiling high trusses provide a maximized span for market area, flexibility of program as well as an unobstructed connection moving through the ground floor.

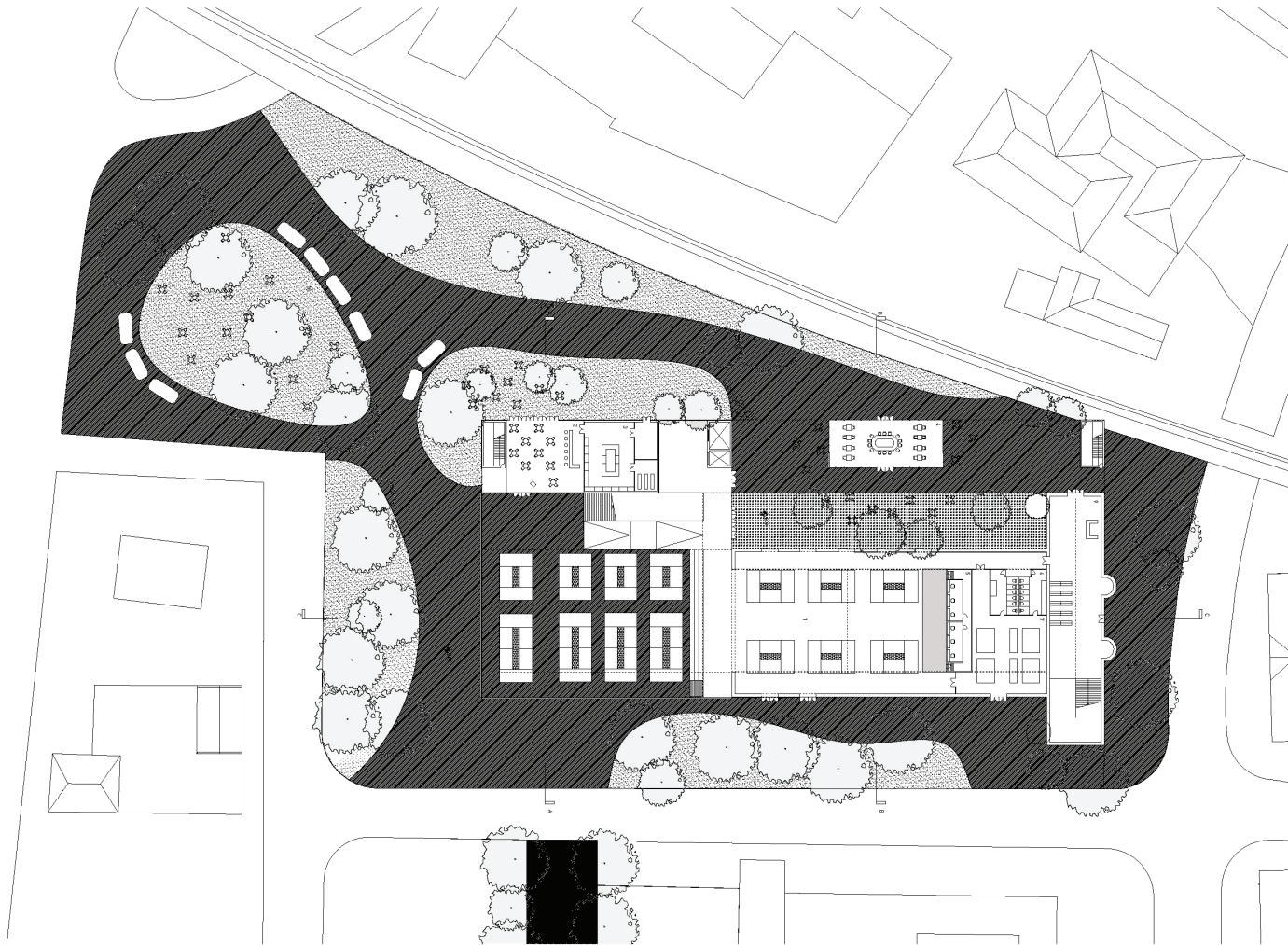


TRANSFORM

Public and private spaces are separated by using different circulation but the classroom / office spaces are semi-public area which will act as a buffer zone between the residential (private) space and market (public) space. The market hall transforms into a community center when the market is not active.

Shutter system will help controlling the microclimate of the market space by providing natural ventilation during the summer time and a warm and safe shelter during the cold winter of Guelph.

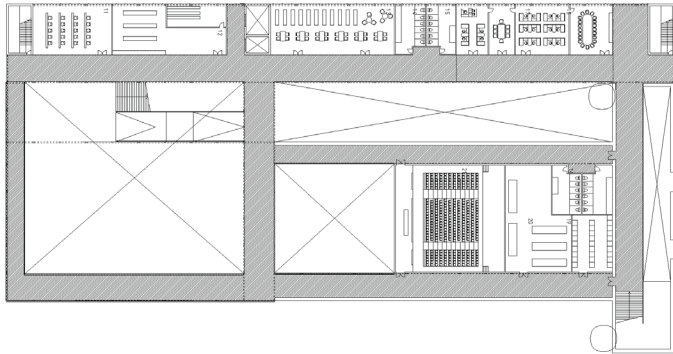




- MARKET**
- 1 indoor vendors
 - 2 restaurant
 - 3 kitchen
 - 4 cafe
 - 5 backstage area for auditorium
 - 6 restroom
 - 7 storage for vendors
 - 8 loading zone + trash
 - 9 residential lobby
 - 10 outdoor market

GROUND FLOOR PLAN

1/64" = 1'-0"

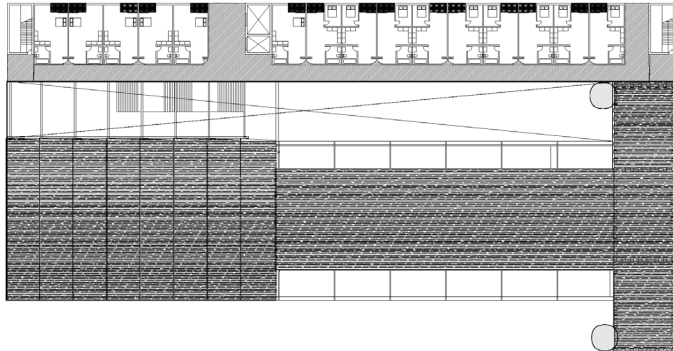


2ND FLOOR PLAN

1/64" = 1'-0"

PUBLIC SERVICE

- 11 classroom
- 12 cooking classroom
- 13 library
- 14 restroom
- 15 shared office for 5ppl
- 16 small meeting room
- 17 open office for 12ppl
- 18 large meeting room
- 19 vendor lockers
- 20 mechanical and electrical room
- 21 auditorium



3RD FLOOR PLAN

1/64" = 1'-0"

4TH FLOOR PLAN

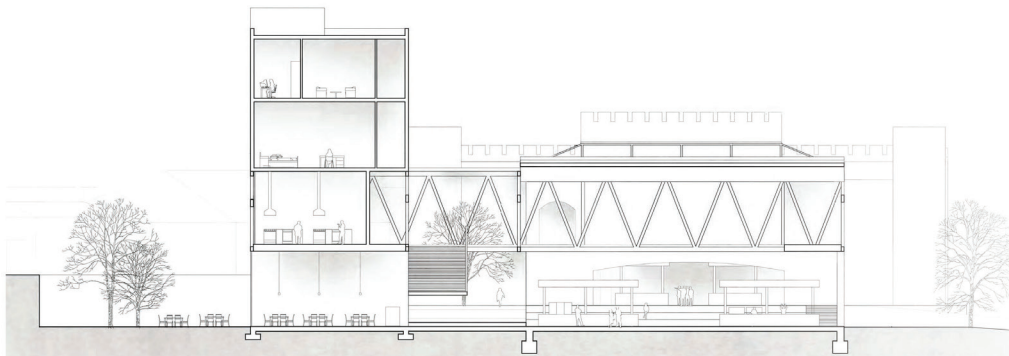
1/64" = 1'-0"

RESIDENTIAL

- 22 lounge for residents

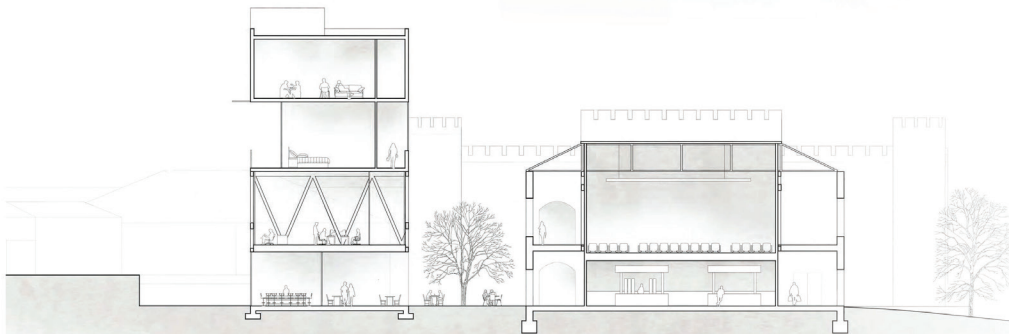
There are four different types of units (studio, 1 bedroom, 2 bedrooms, 3 bedrooms) to bring different groups of people with mixed income together. The second floor's classroom and theater can accommodate public events. It will transform the city into more integrated society.





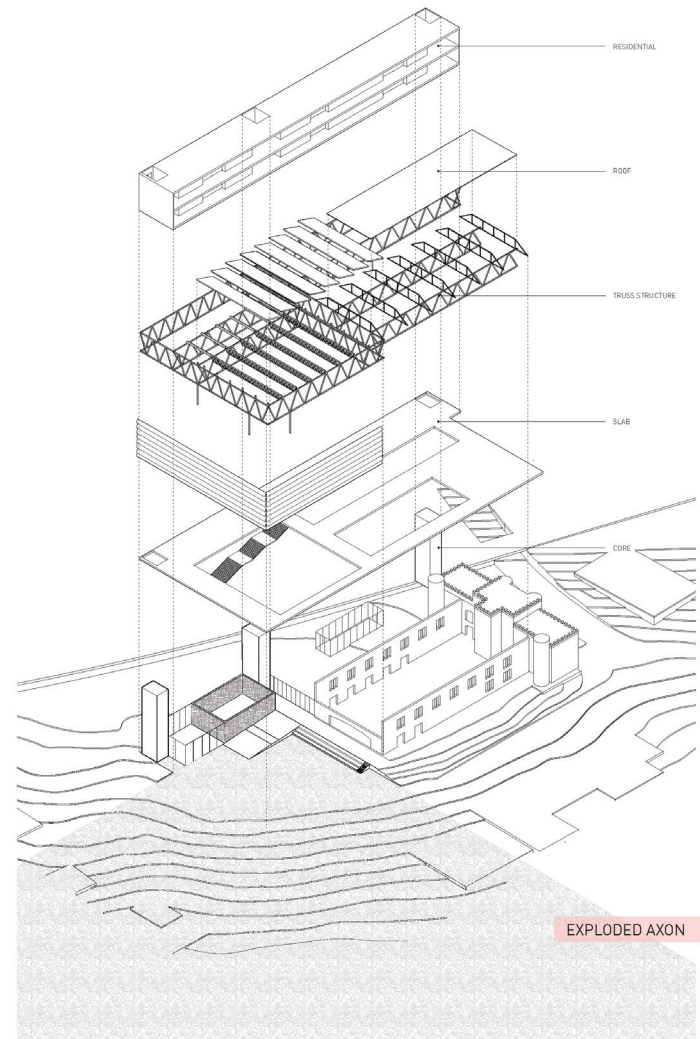
SECTION A

1/64" = 1'-0"



SECTION B

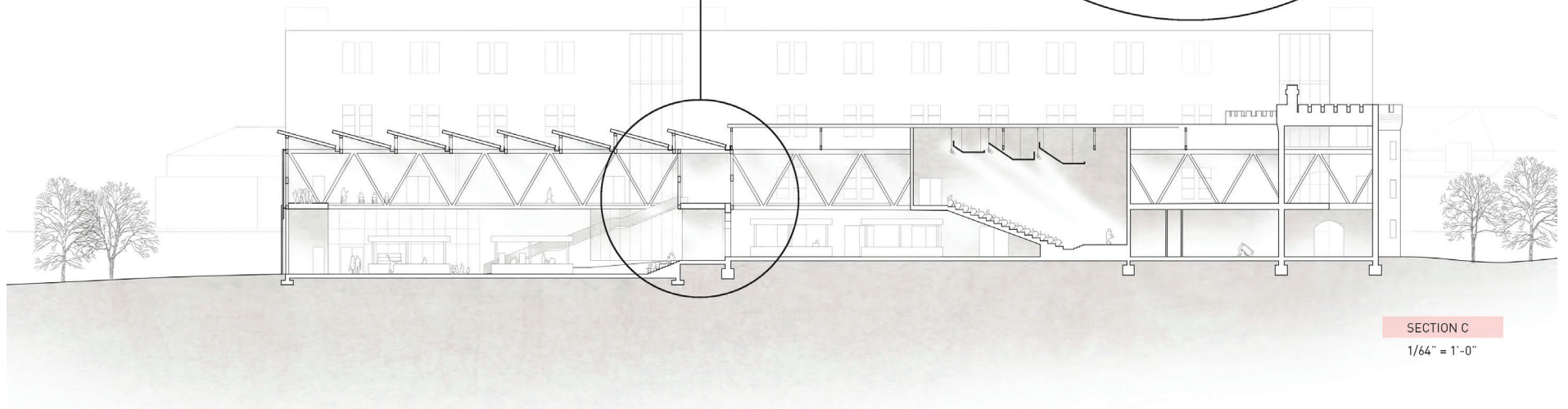
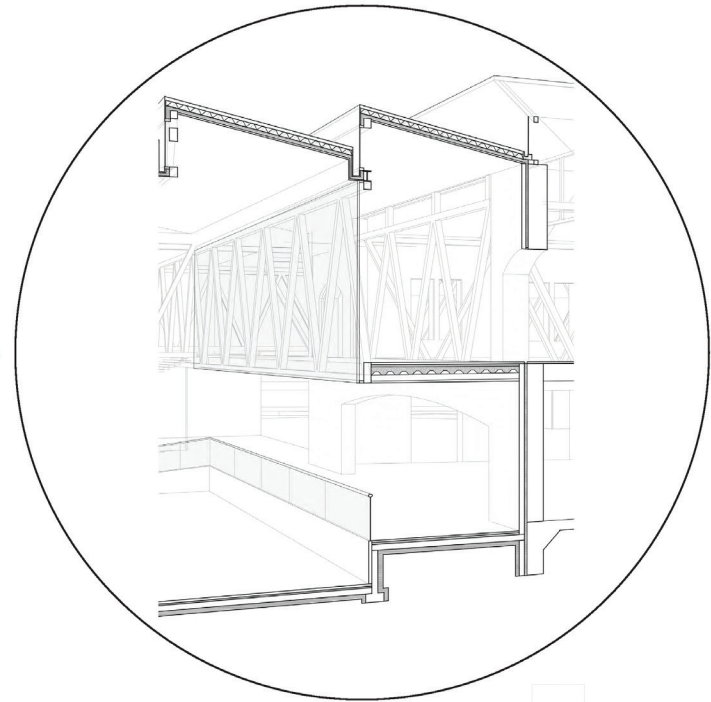
1/64" = 1'-0"



EXPLODED AXON

Truss system and sawtooth roof maximizes the daylighting penetrating into the market and will warm up the space during the cold winter of Guelph.

detailed wall assembly



SECTION C

1/64" = 1'-0"

