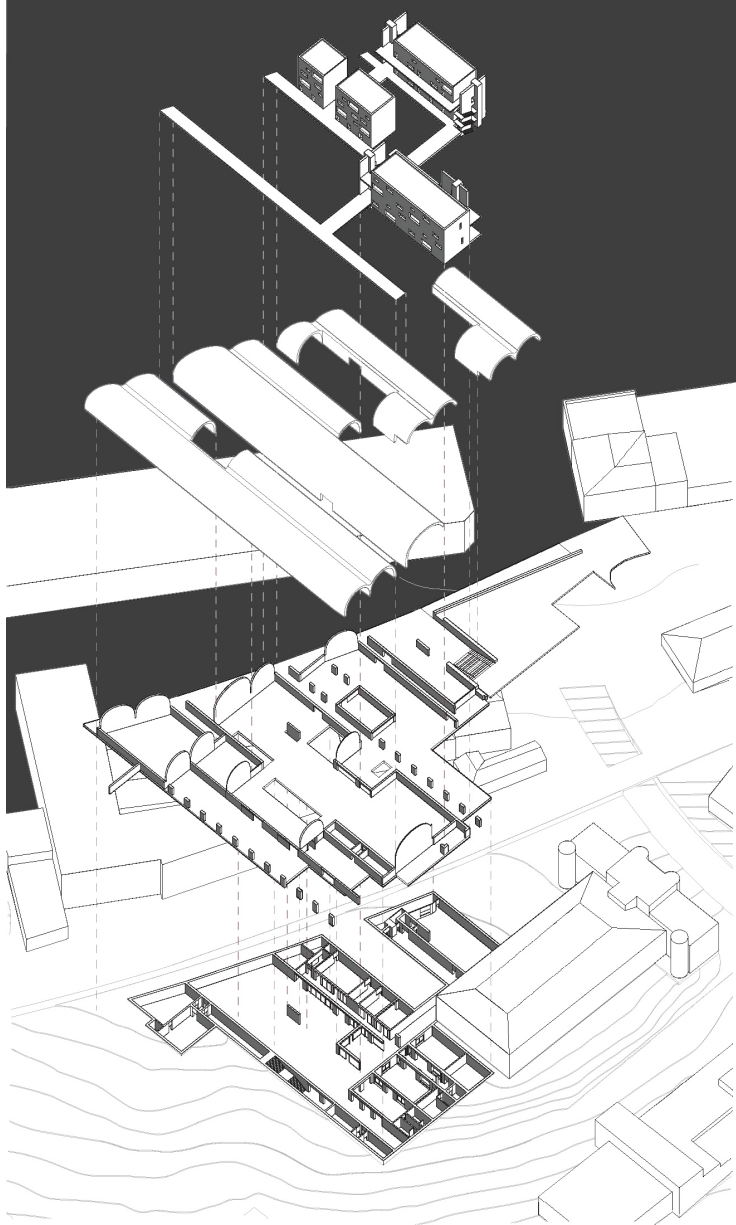


2018 SECOND PLACE

Ian Amen

LYCEUM

A traveling fellowship in Architecture



Lyceum Competition: **CITY OF GUELPH MARKET HALL**

The answer without a solution.

As the city of Guelph has grown rapidly,

Its new market hall does not properly address

The growing population, or the community.

History reveals, market halls have often been the

Bridge which detracts from social barriers:

Examples including, the Greek Agora, Roman

Forum, to the Santa Caterina Market Hall.

The site is found at the connection between

Three distinct zones – with a desired connection

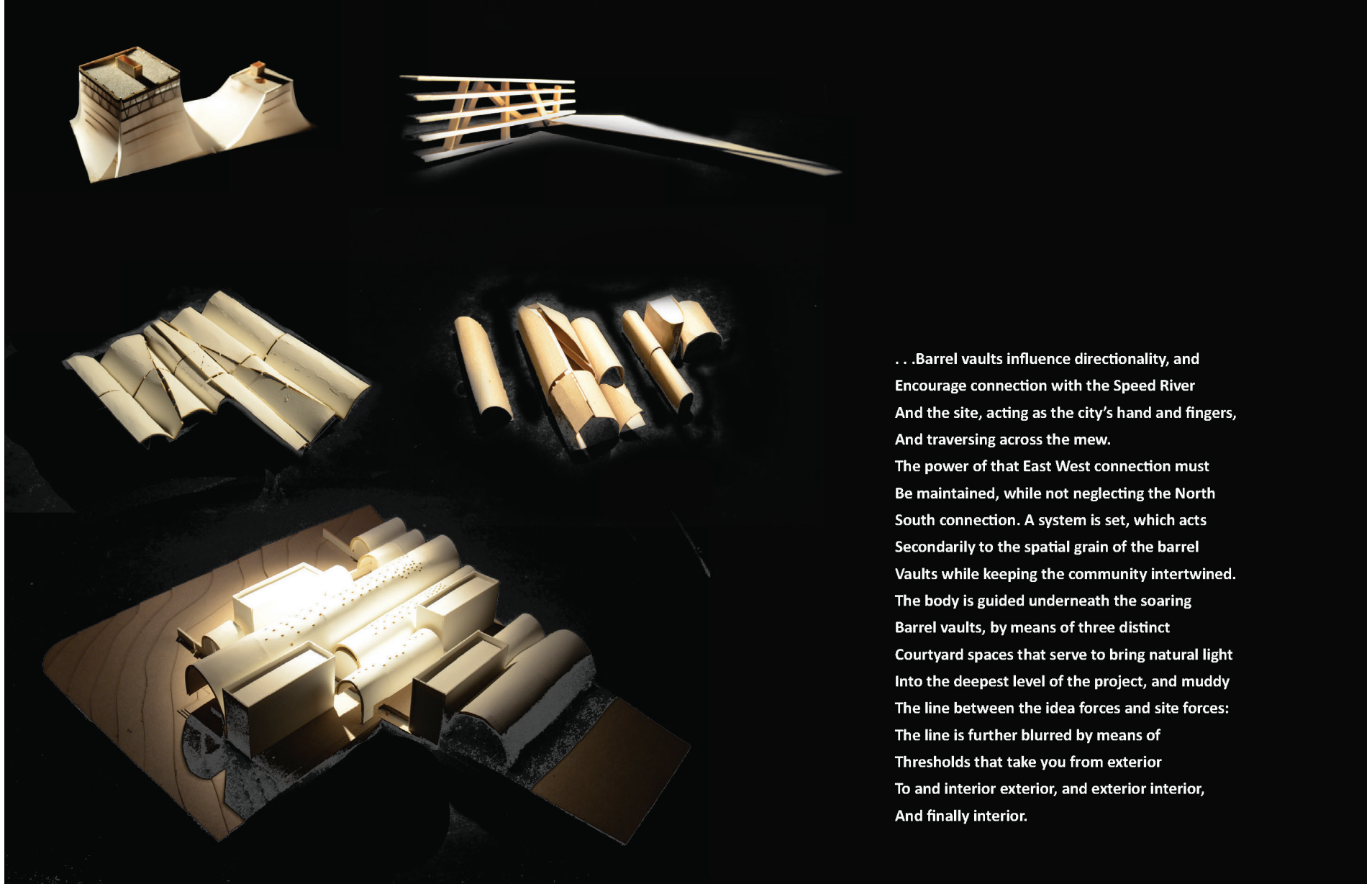
To the Speed River through a pedestrian mew –

These different typologies intertwined would

Strengthen the city's foundation for a steady

Continuation of their success, growth, and

Community. . .



. . . Barrel vaults influence directionality, and Encourage connection with the Speed River And the site, acting as the city's hand and fingers, And traversing across the mew. The power of that East West connection must Be maintained, while not neglecting the North South connection. A system is set, which acts Secondly to the spatial grain of the barrel Vaults while keeping the community intertwined. The body is guided underneath the soaring Barrel vaults, by means of three distinct Courtyard spaces that serve to bring natural light Into the deepest level of the project, and muddy The line between the idea forces and site forces: The line is further blurred by means of Thresholds that take you from exterior To and interior exterior, and exterior interior, And finally interior.



1 Barrel Vaults

Emphasizes directionality for a greater connection to the Speed River.

2 Rhythm Through Separation

Creates spacial hierarchy between dense and open space. Defines placement for core elements.

3 Hierarchy

Illustrates entry and connection to pedestrian mew.

4 Courtyards

Maintain connection to the outside and assist in cross circulation against the spatial grain.

5 Site

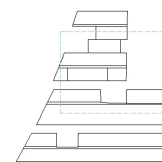
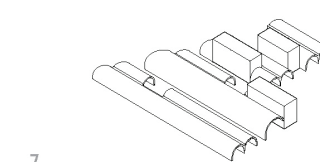
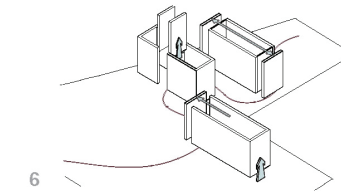
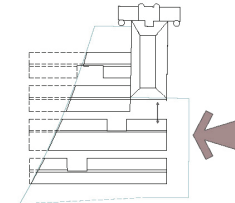
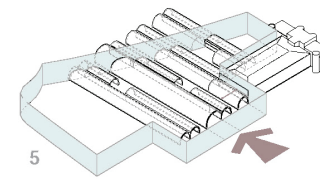
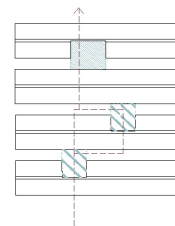
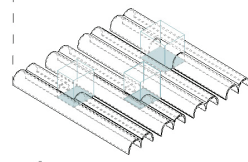
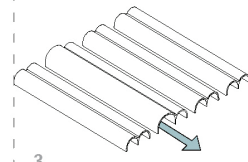
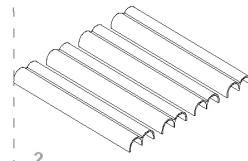
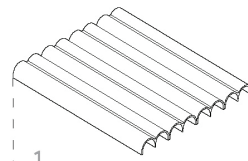
The vaults push, pull, and slice according to site conditions.

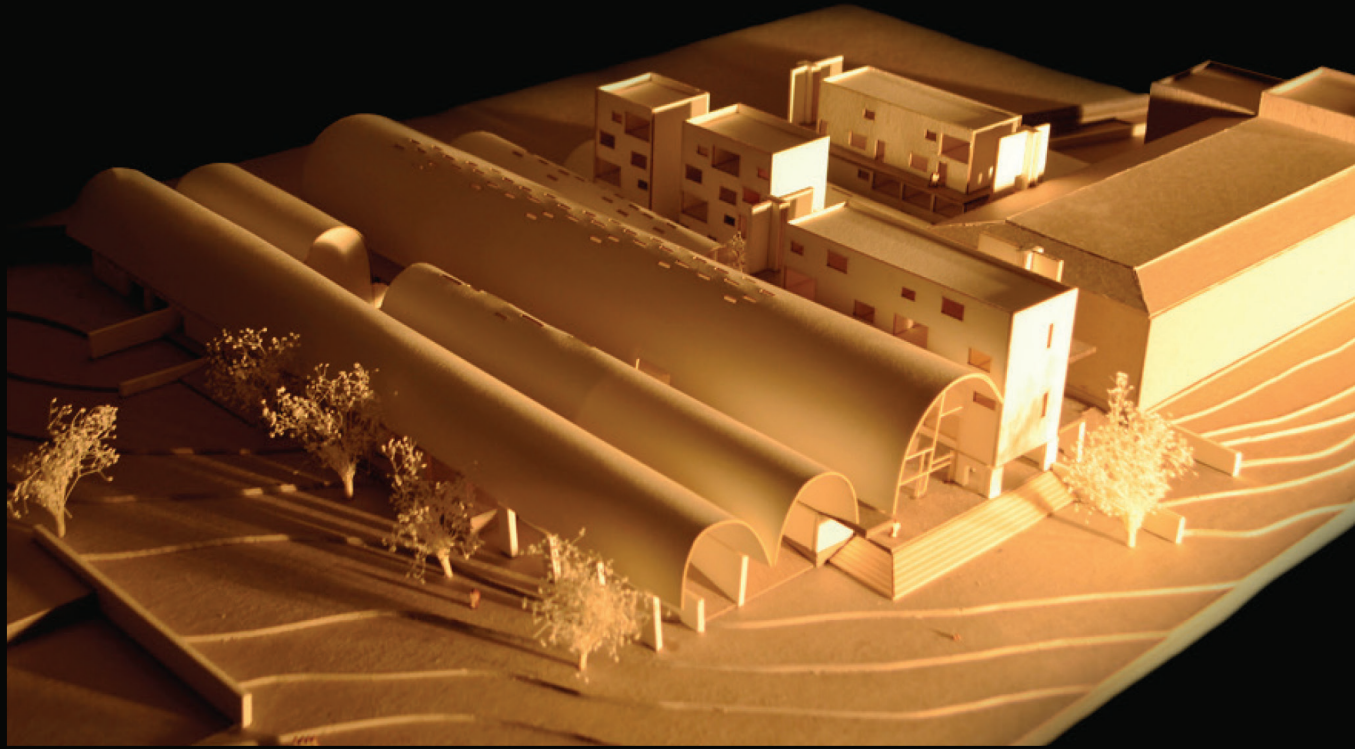
6 Interrelated Space

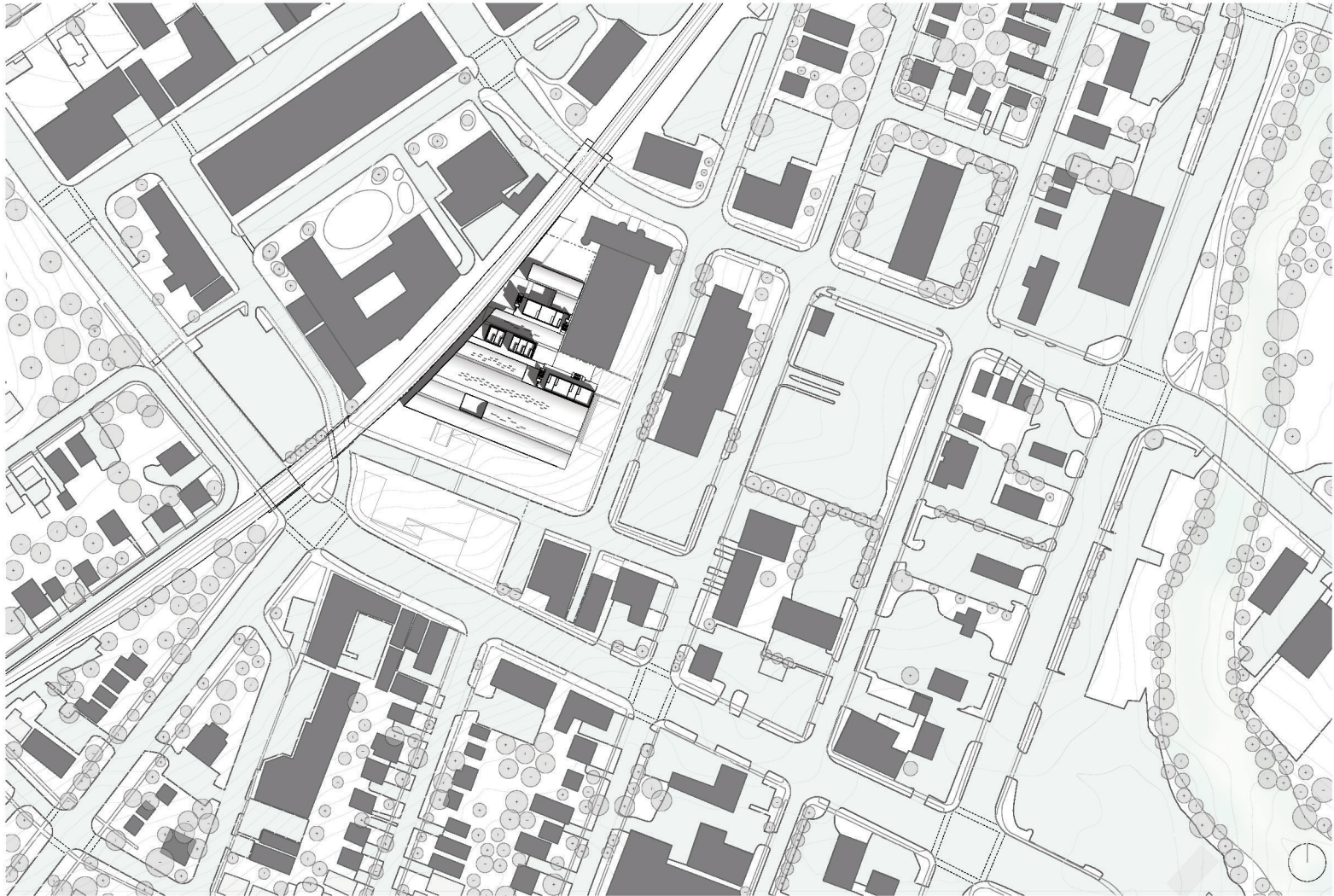
The residential responds to the directionality through proportion but responds to cross circulation by pushing walls out which later form elevator and stair cores.

7 Residential

Places as a community of row houses on the Northern - residential - zone of the site.



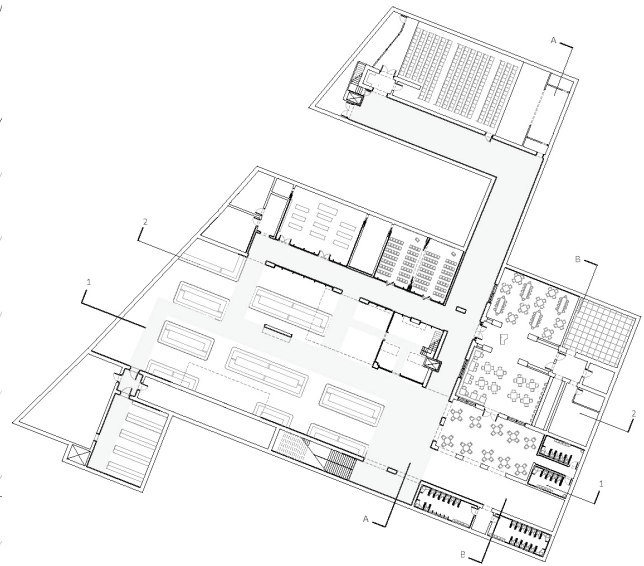




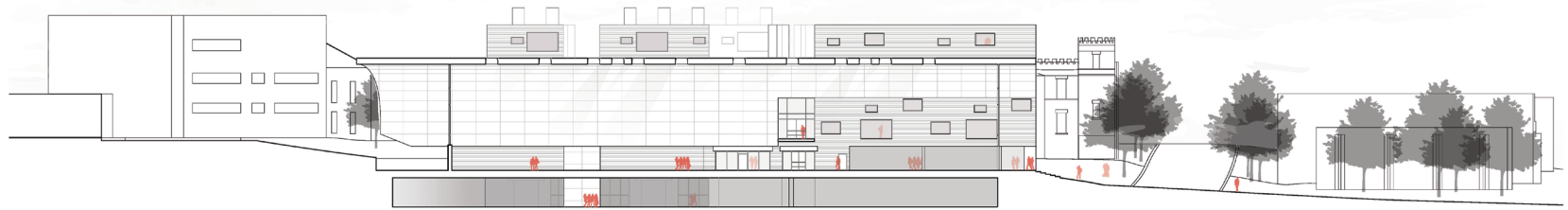
Site Plan



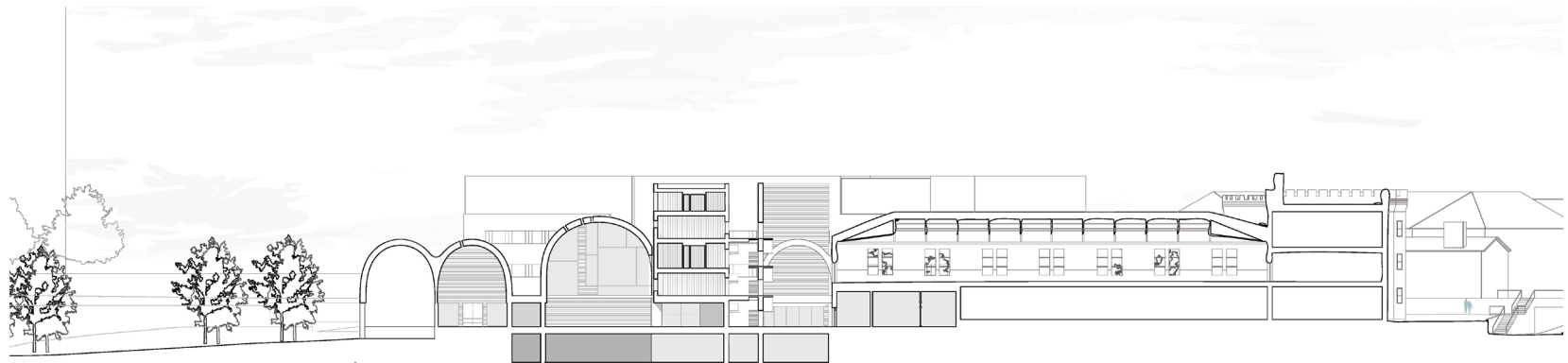
1 - Ground Level



0 - Basement Level



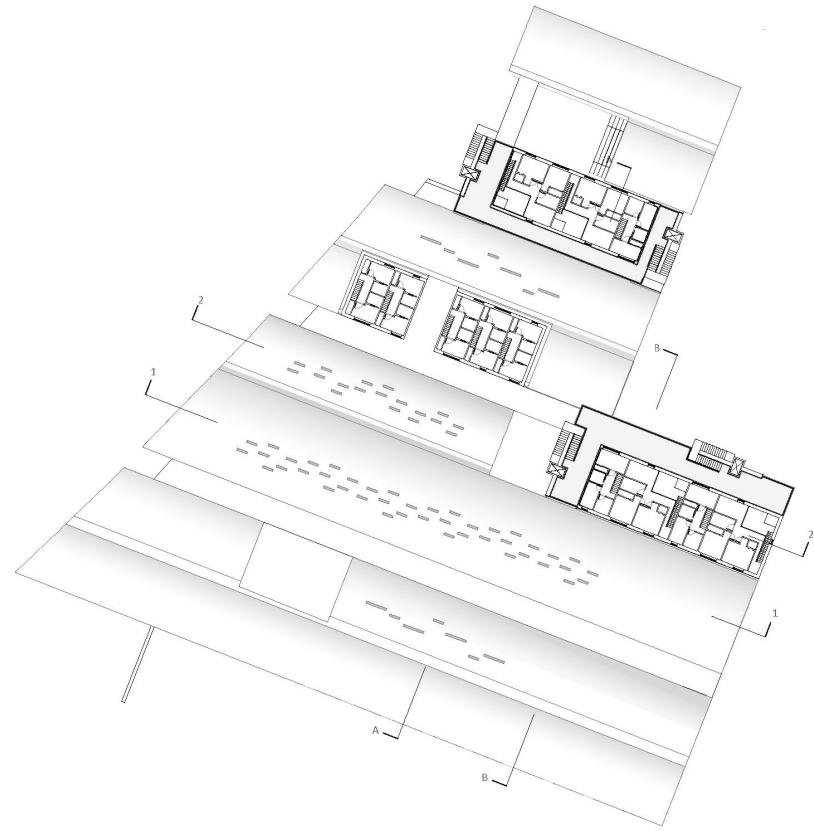
Section 1-1



Section B-B



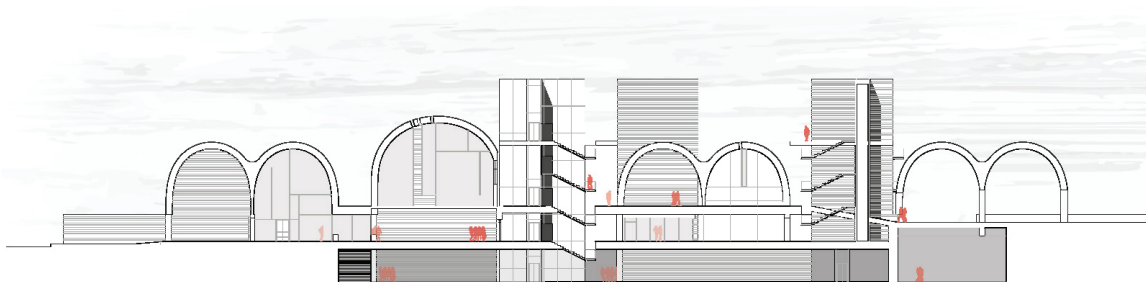
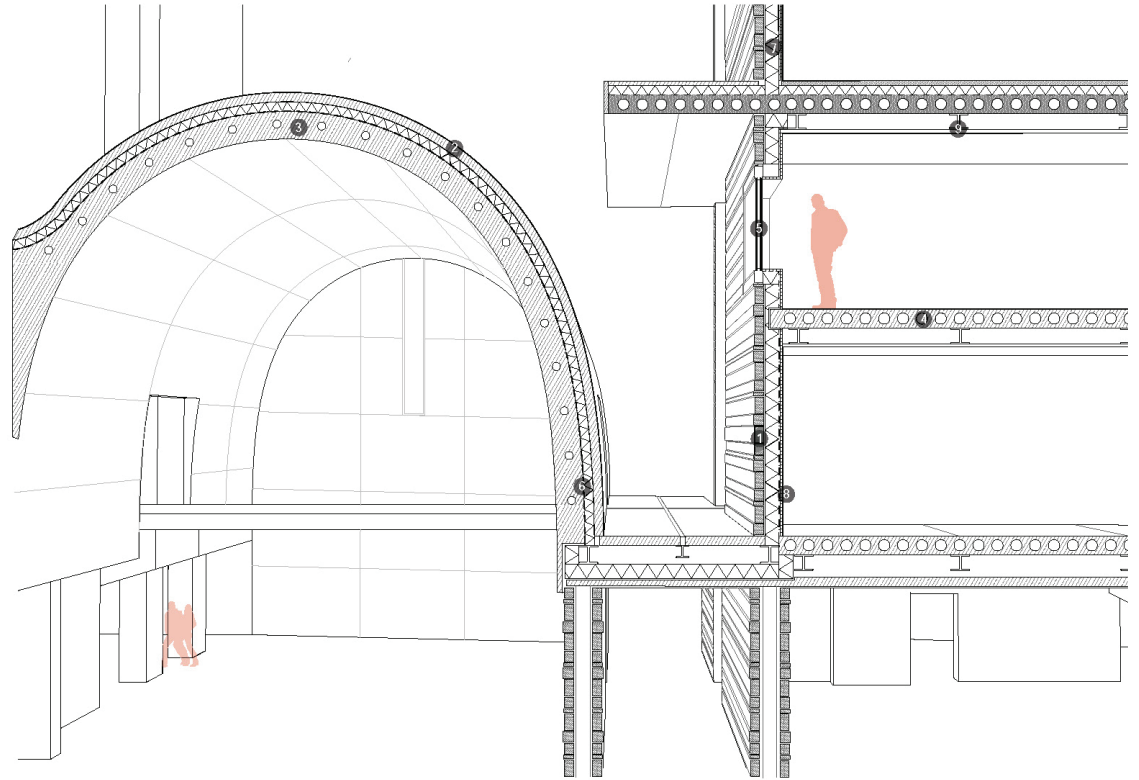
2 - Residential Level



5 - Top Residential Level

components

- 1 Rochlitz porphyritic tuff
- 2 concrete veneer
- 3 tensioned concrete, radiant heating and cooling
- 4 reinforced concrete, hollow core slab
- 5 double glazing: 4mm toughened glass + 20 mm cavity + 4 mm toughened glass
- 6 moisture barrier
- 7 rigid insulation
- 8 15 mm softwood plywood
- 9 steel I-beam



Section A-A



Section B-B