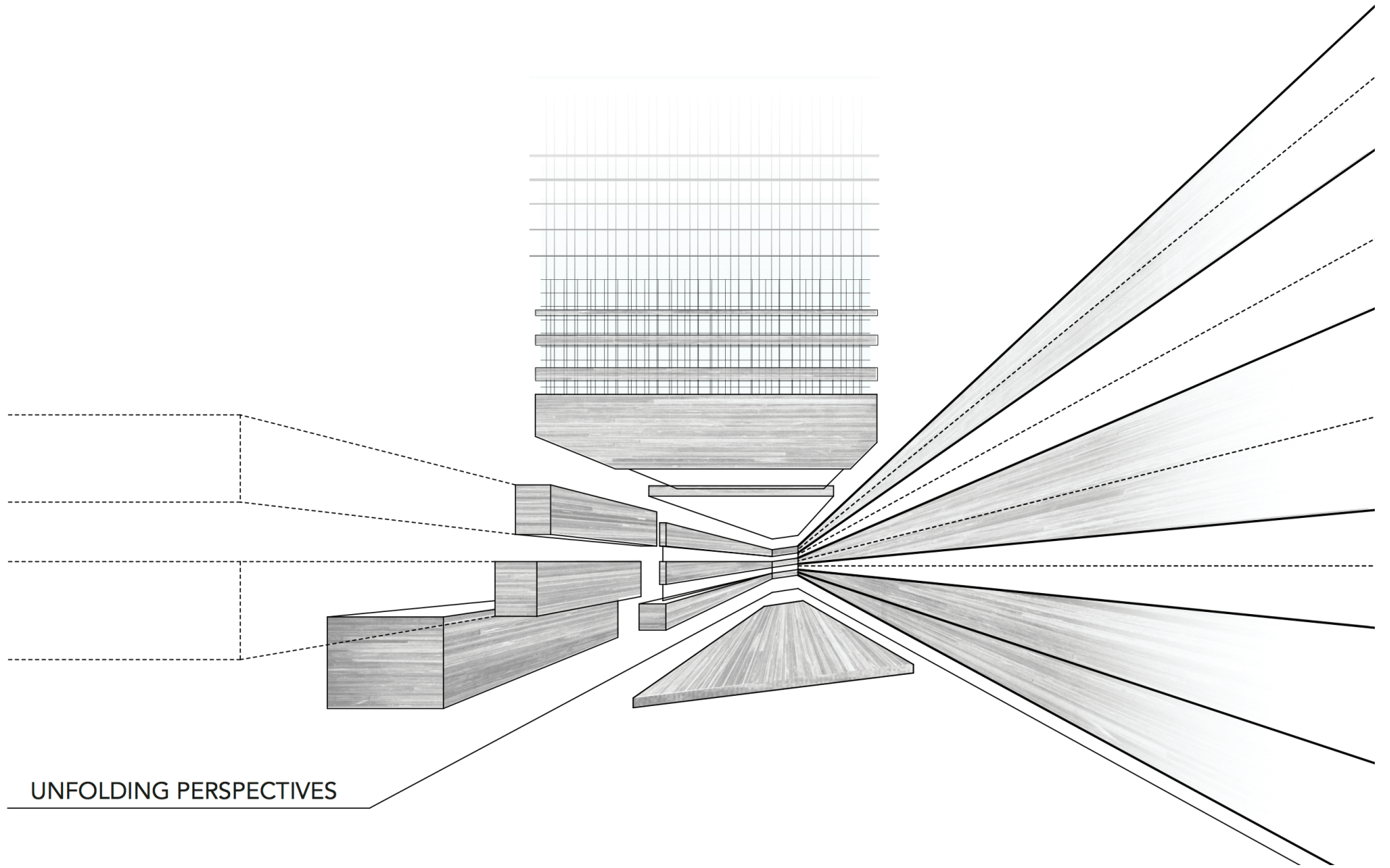


2017 MERIT

Julian A. Roman Fuentes

LYCEUM

*A traveling fellowship in Architecture*

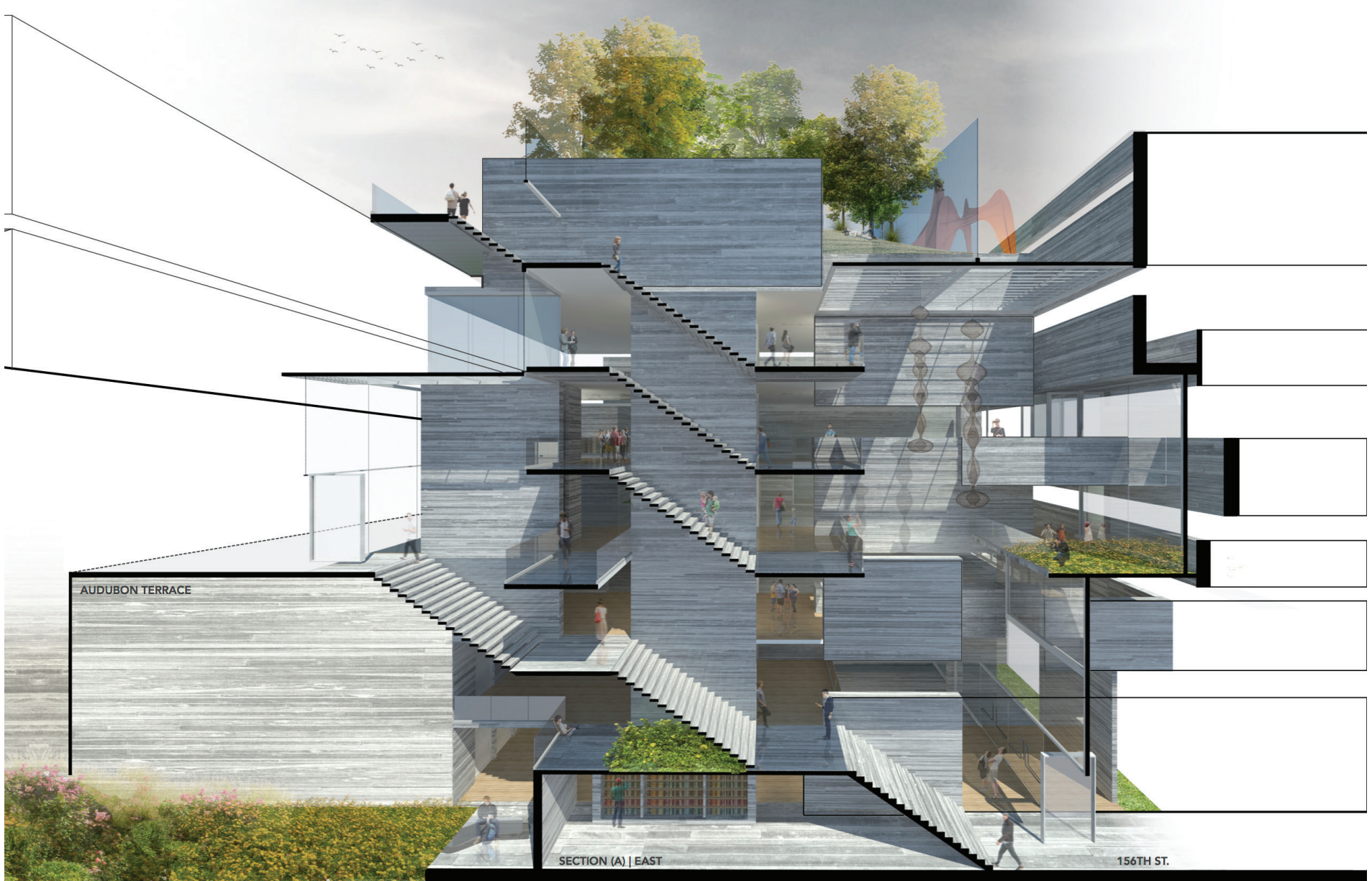


UNFOLDING PERSPECTIVES



The proposed library occupies the only site on the terrace where a natural environment exists. An outcropping of Manhattan Schist surmounted by a grouping of trees shapes the change in elevation between the upper terrace and 156th Street below. In honor of this condition, the new library is organized around a series of stone walls that create directionality and frame a vertical space for vegetation. At the 156th Street level the building appears solid, stable and reassuring while offering dynamic views up to the terrace above. Rising through the building, the presence of stone becomes increasingly dematerialized until, rising above the terrace level, it disappears completely into something light and sublime, a garden that echoes the natural environment that once existed below.

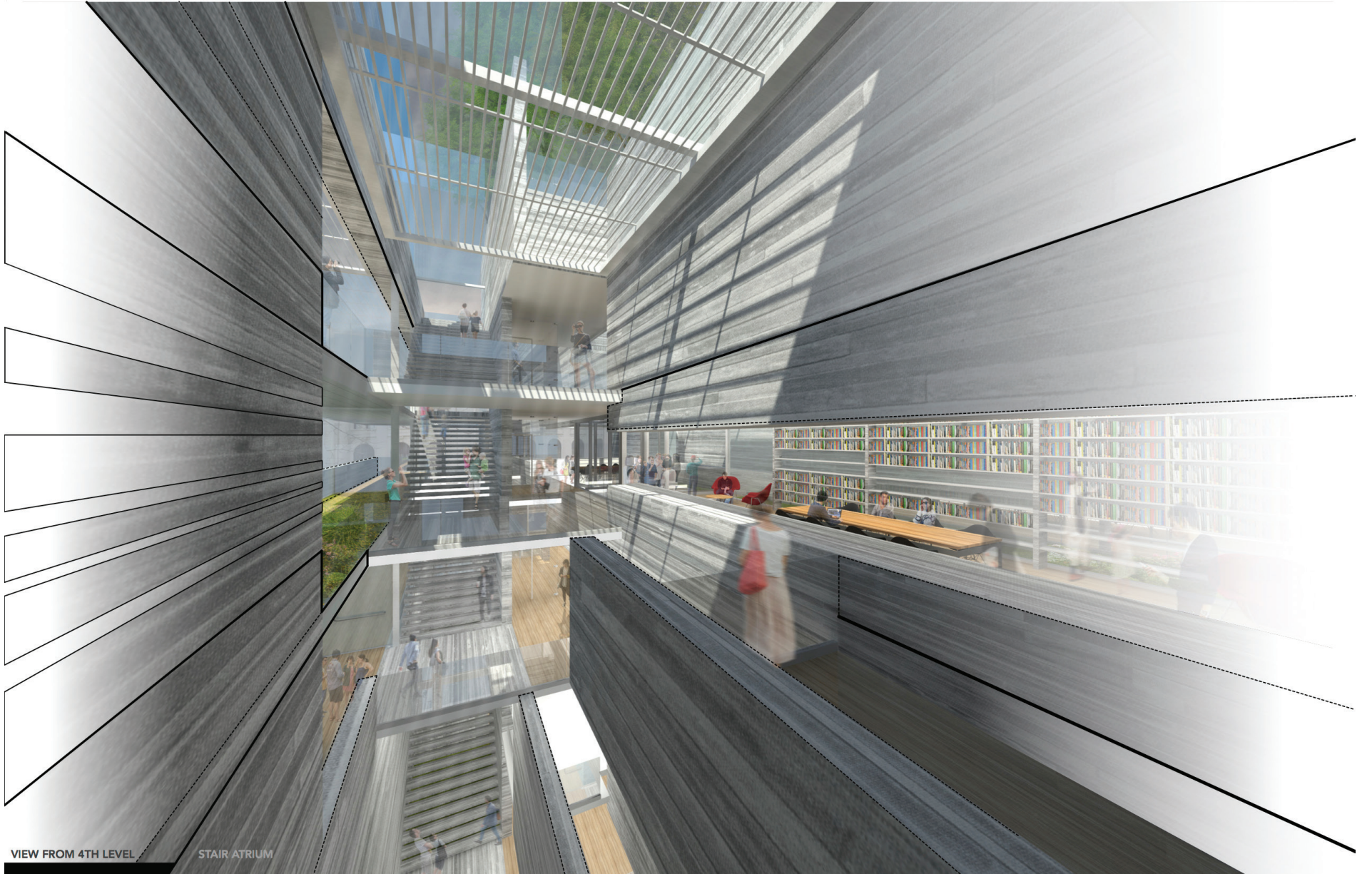
ENTRANCE | 156TH STREET



AUDUBON TERRACE

SECTION (A) | EAST

156TH ST.



VIEW FROM 4TH LEVEL

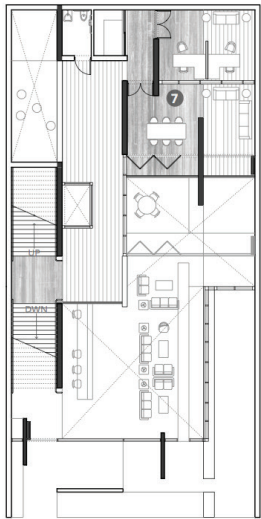
STAIR ATRIUM



FRONT ELEVATION | 156TH ST.

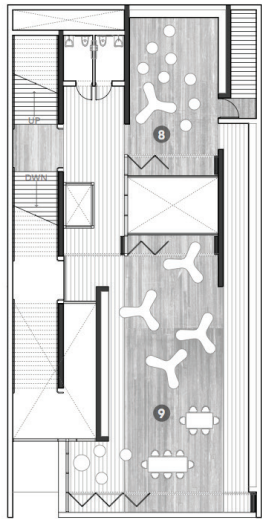
- 1 LOBBY
- 2 CIRCULATION DESK
- 3 COMPUTER / WORK STATIONS
- 4 READING CORNER
- 5 GARDEN | ATRIUM
- 6 LOADING ACCESS STATIONS

GROUND FLOOR - 156TH ST. ACCESS



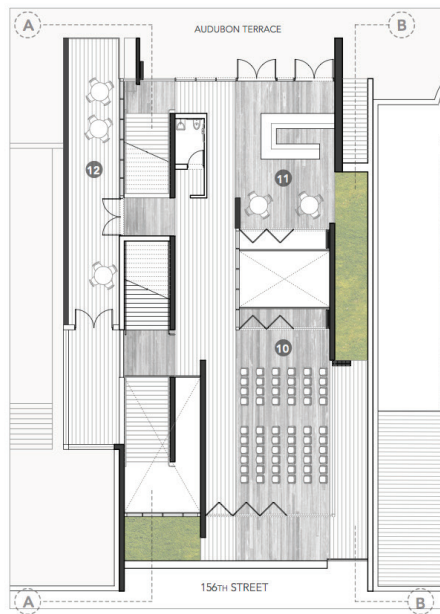
7 ADMINISTRATION OFFICES  
STAFF LOUNGE

MEZZANINE LEVEL



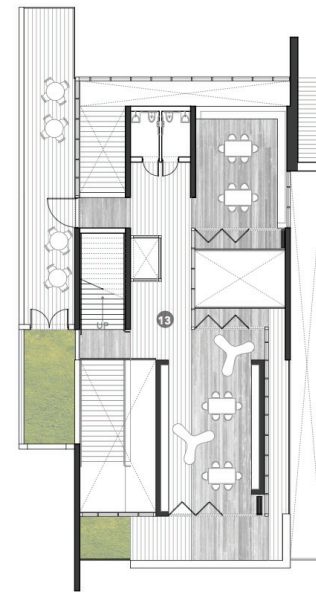
8 STORY TELLING HOUR SPACE  
9 CHILDREN LIBRARY SPACE

CHILDREN LEVEL



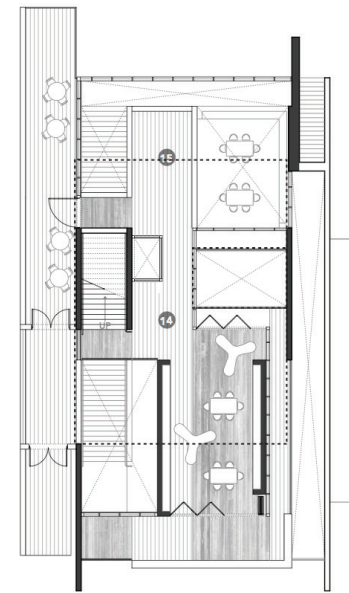
10 COMMUNITY | MULTIPURPOSE SPACE  
11 LOBBY CAFE  
12 BRIDGE TERRACE

TERRACE LEVEL



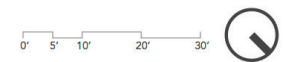
13 ADULT | YOUNG ADULT LIBRARY SPACE

ADULT | YOUNG ADULT LEVEL



14 TEEN CENTER SPACE  
15 ROOF TOP GARDEN OUTLINE

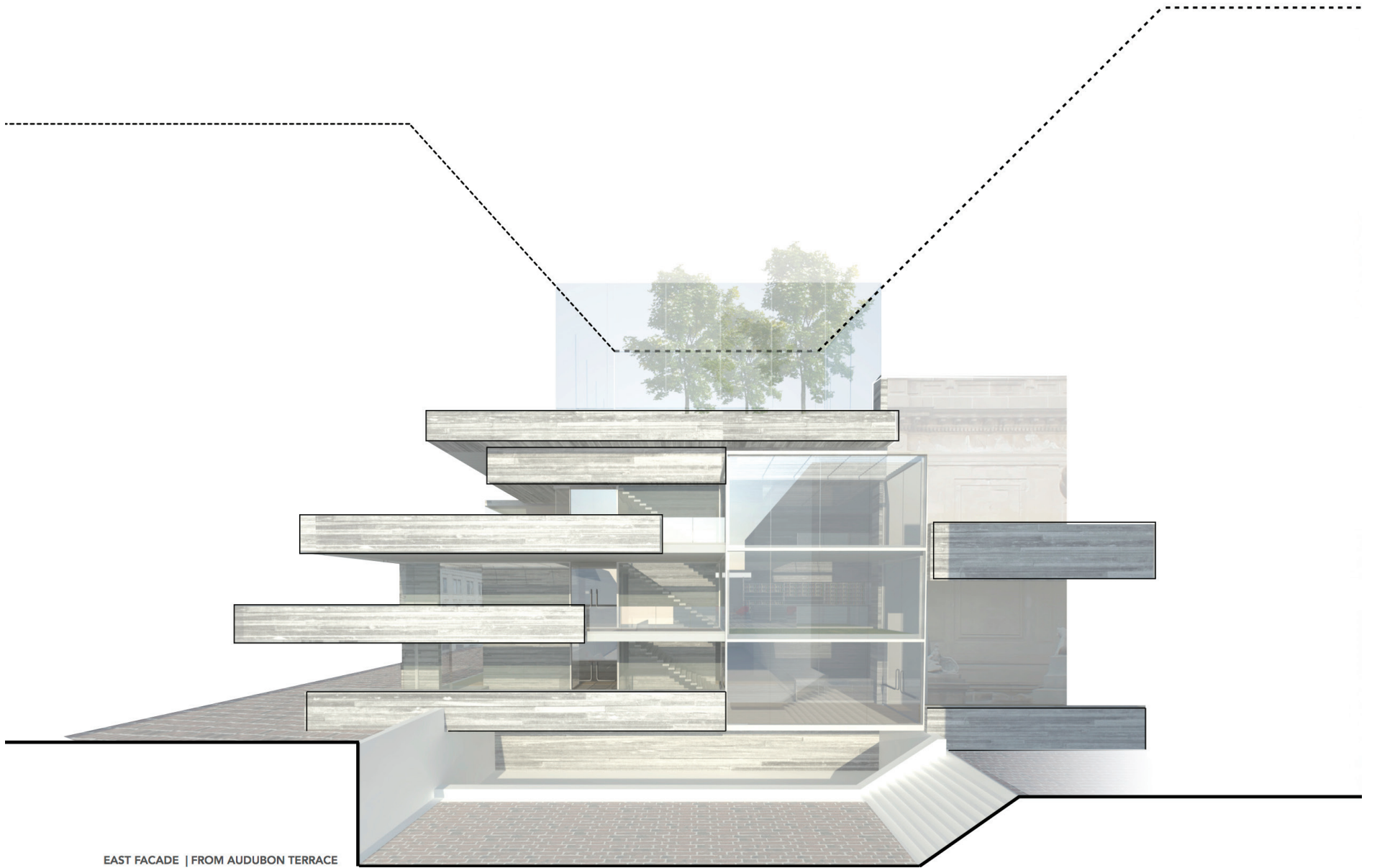
TEEN LEVEL





SECTION (B) | WEST





EAST FACADE | FROM AUDUBON TERRACE



ROOF TOP GARDEN | WEST