

2017 MERIT

David Sweere

LYCEUM

*A traveling fellowship in Architecture*

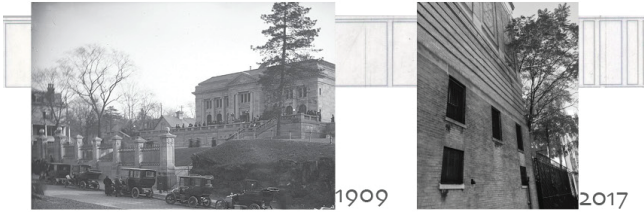
ANIMATION



POCHE | FACADE | TERRACE



## TEAR DOWN THIS WALL!

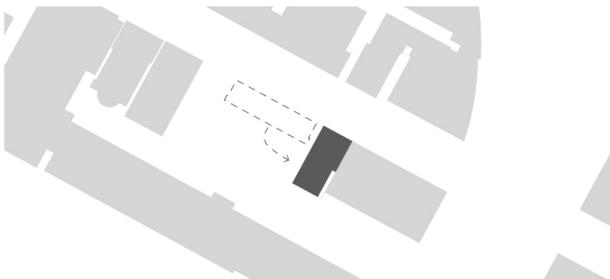


AUDUBON TERRACE WAS ORIGINALLY CONCEIVED AS A CULTURAL CENTER, SHOWCASING THE LOCATION OF THE HISPANIC SOCIETY IN NORTH MANHATTAN. AS THE TERRACE FULLY DEVELOPED TOWARD ITS CURRENT STATE, IT BEGAN CLOSE OFF ANY VISUAL AND ACCESSIBLE RELATIONSHIP TO 156TH STREET. RATHER THAN INTEGRATING INTO THE WASHINGTON HEIGHTS COMMUNITY AND SERVING AS A CIVIC AMENITY, AUDUBON TERRACE STANDS AS A FORTRESS, LOADED WITH NEGATIVE SOCIAL IMPLICATIONS. THIS RELATIONSHIP HAS RESULTED IN A DISJUNCTION BETWEEN THE TERRACE AND WASHINGTON HEIGHTS.

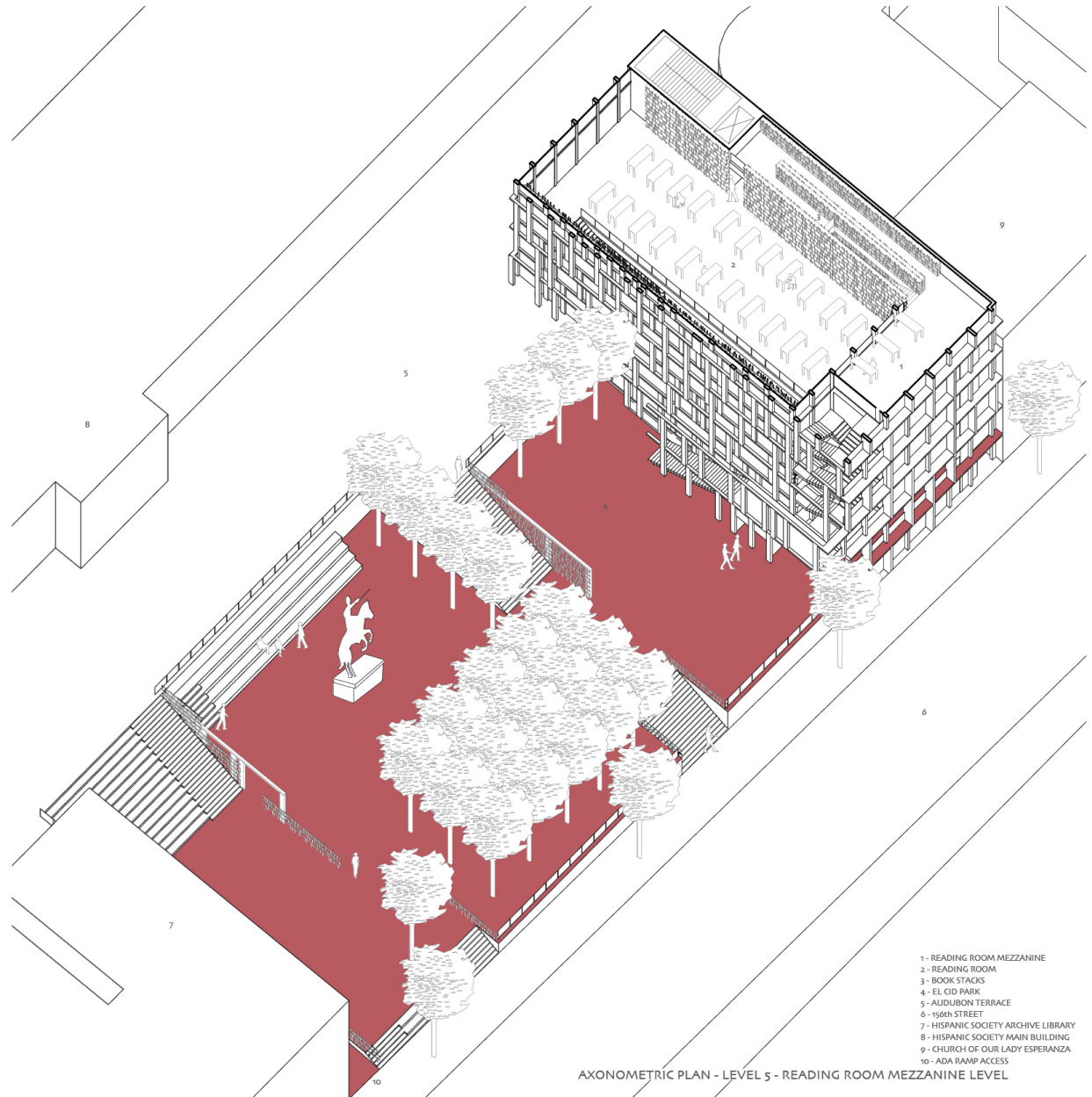
PER THE DIAGRAMS BELOW, THIS PROPOSAL CALLS FOR THE RADICAL RELOCATION OF THE HISPANIC SOCIETY'S ARCHIVE LIBRARY, RESTORING THE VISUAL RELATIONSHIP BETWEEN THE SITE'S ORIGINAL BUILDING AND 156TH STREET. BY OPENING AUDUBON TERRACE TO 156TH STREET, A GRAND PUBLIC SPACE IS OFFERED TO ACCOMPANY THE NEW BRANCH LIBRARY. THE NEW "EL CID PARK" ACTS AS PUBLIC ENTRANCE TO BOTH AUDUBON TERRACE AND THE BRANCH LIBRARY.



SITE LOCATION



RELOCATION OF THE ARCHIVE LIBRARY



- 1 - READING ROOM MEZZANINE
- 2 - READING ROOM
- 3 - BOOK STACKS
- 4 - EL CID PARK
- 5 - AUDUBON TERRACE
- 6 - 156th STREET
- 7 - HISPANIC SOCIETY ARCHIVE LIBRARY
- 8 - HISPANIC SOCIETY MAIN BUILDING
- 9 - CHURCH OF OUR LADY ESPERANZA
- 10 - ADA RAMP ACCESS

AXONOMETRIC PLAN - LEVEL 5 - READING ROOM MEZZANINE LEVEL



VIEW FROM 156th STREET - LIBRARY AND EL CID PARK

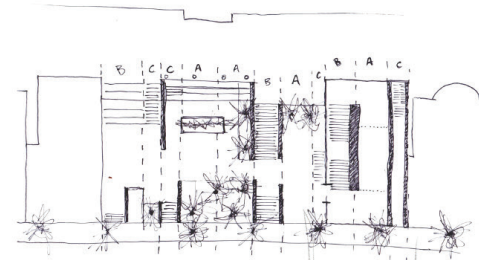
BAS RELIEF STUDIES

## EYES UPON THE STREET

IN THE SPIRIT OF JANE JACOBS, THE "DE-FORTIFYING" OF AUDUBON TERRACE BRINGS EYES BACK TO THE STREET, "EYES BELONGING TO THOSE WE MIGHT CALL THE NATURAL PROPRIETORS OF THE STREET," THE WASHINGTON HEIGHTS COMMUNITY. AS THE PRESENCE OF A NEW BRANCH LIBRARY AND PARK ATTRACTS ACTIVITY, 156th STREET BECOMES ANIMATED. THE GOINGS-ON OF THE TERRACE BECOME TRANSPARENT.

THROUGH A PROCESS OF BAS RELIEF STUDIES, AN AESTHETIC WAS DEVELOPED THAT REINFORCES THIS IDEA OF TRANSPARENCY AS A SOURCE OF COLLECTIVE SECURITY. THE TRANSPARENCY OF THE BAS RELIEF STUDIES CONSISTENTLY FURTHERS THE INTEGRATION OF THE PUBLIC SPACE AND COMMUNITY THROUGHOUT THE PROPOSAL.

HOW DO WE RESTORE AUDUBON TERRACE? ANIMATE IT!



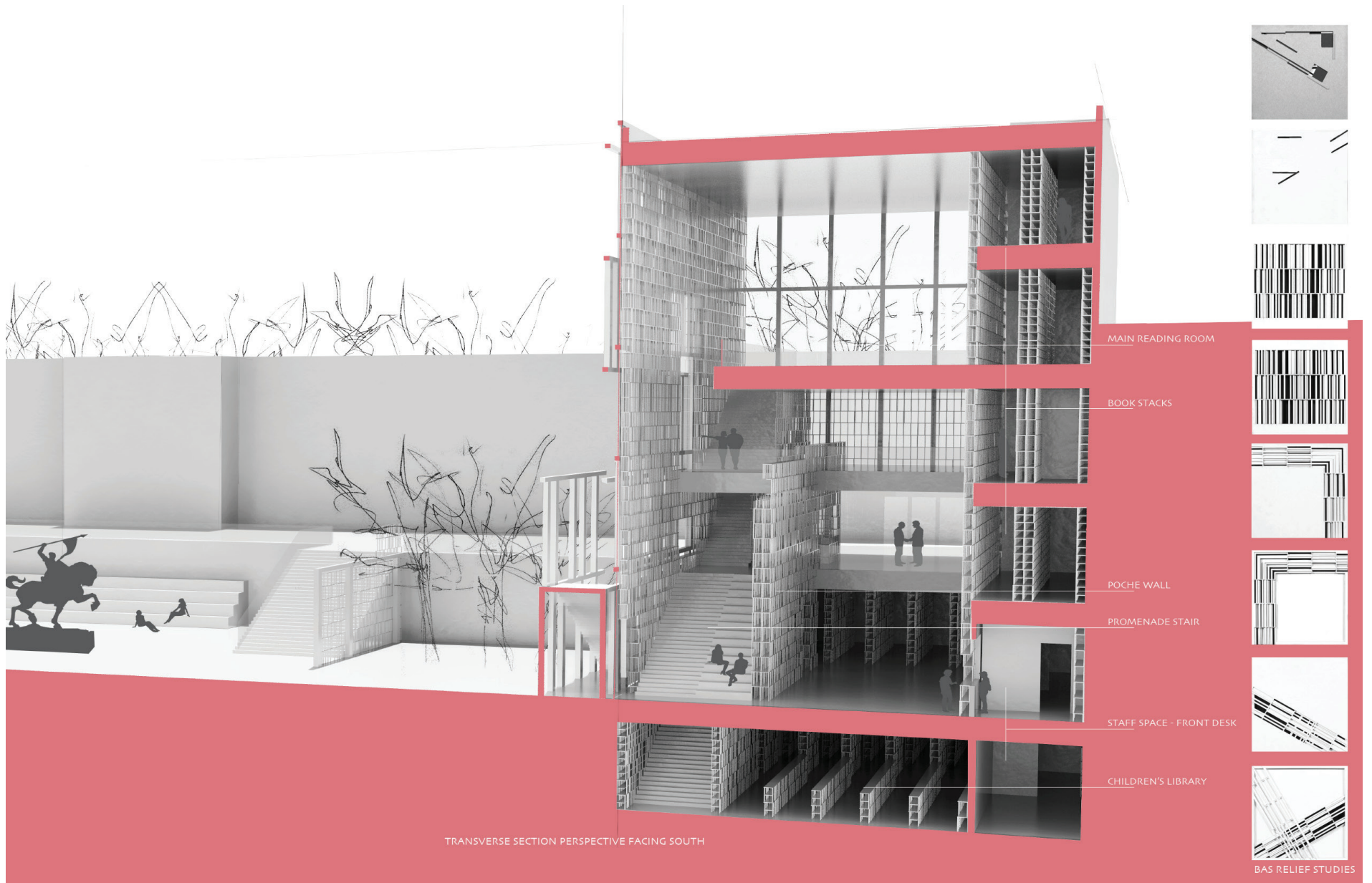
LIBRARY INTERIOR AND EL CID PARK ORGANIZATION DIAGRAM



MAIN READING ROOM

THE READING ROOM OPENS UP THROUGH THE POROUS FACADE TO VIEWS OF AUDUBON TERRACE, EL CID PARK, AND 156th STREET, SERVING AS AN ACTIVE NEIGHBOR TO THE WASHINGTON HEIGHTS COMMUNITY.





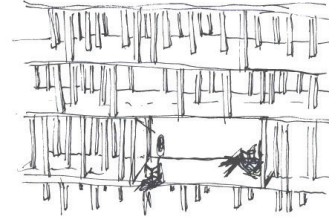
## ANIMATE THE POCHE, ANIMATE THE FACADE



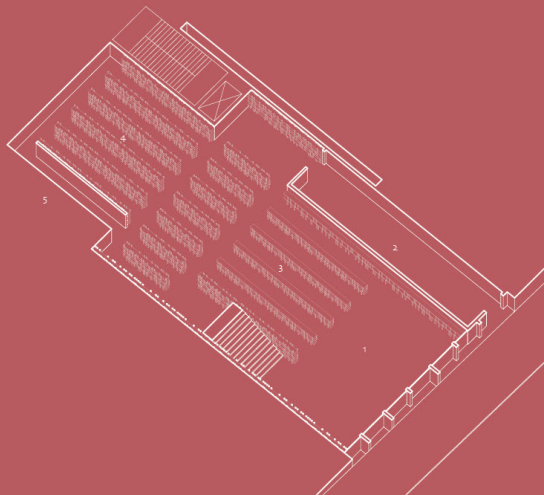
A POROUS POCHE, A SEMI-TRANSPARENT MASS, WAS DEVELOPED FROM THE BAS RELIEF STUDIES TO SERVE MULTIPLE FUNCTIONS ASSOCIATED WITH THE LIBRARY.

- DIFFUSES LIGHT
- ACTS AS SHELVING FOR THE LIBRARY'S BOOK COLLECTION
- PARTITIONS SPACE
- CONTAINS STRUCTURE
- SERVES AS A LAYERED FACADE DESIGN
- PROVIDES NOOKS FOR MORE INTIMATE READING SPACES
- CONTAINS CIRCULATION DESKS AND OFFICES
- PROVIDES VERTICAL AND HORIZONTAL CIRCULATION
- DISPLAYS ARTWORK AND ARTIFACTS

THE MAIN PROMENADE STAIR ANIMATES BOTH THE INTERIOR POCHE WALL AND THE FACADE. THE ANIMATED POCHE WALL BECOMES A FUNCTIONAL ANIMATED FACADE FOR THE INTERIOR ATRIUM SPACE AS WELL AS THE NEW EL CID PARK.

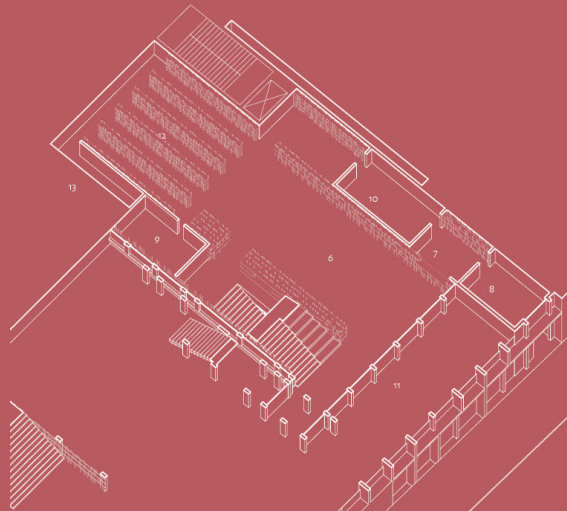


EARLY CONCEPT SKETCHES



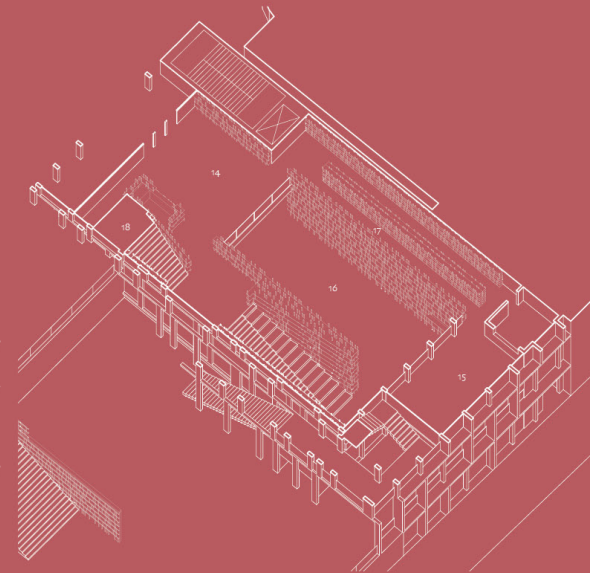
AXONOMETRIC PLAN - LEVEL 0 - 156th STREET/ SERVICE ENTRANCE LEVEL

- 1 - CHILDREN'S LIBRARY
- 2 - SERVICE ENTRANCE/ STORAGE
- 3 - CHILDREN'S BOOK STACKS
- 4 - BOOK STACKS
- 5 - RESTROOMS



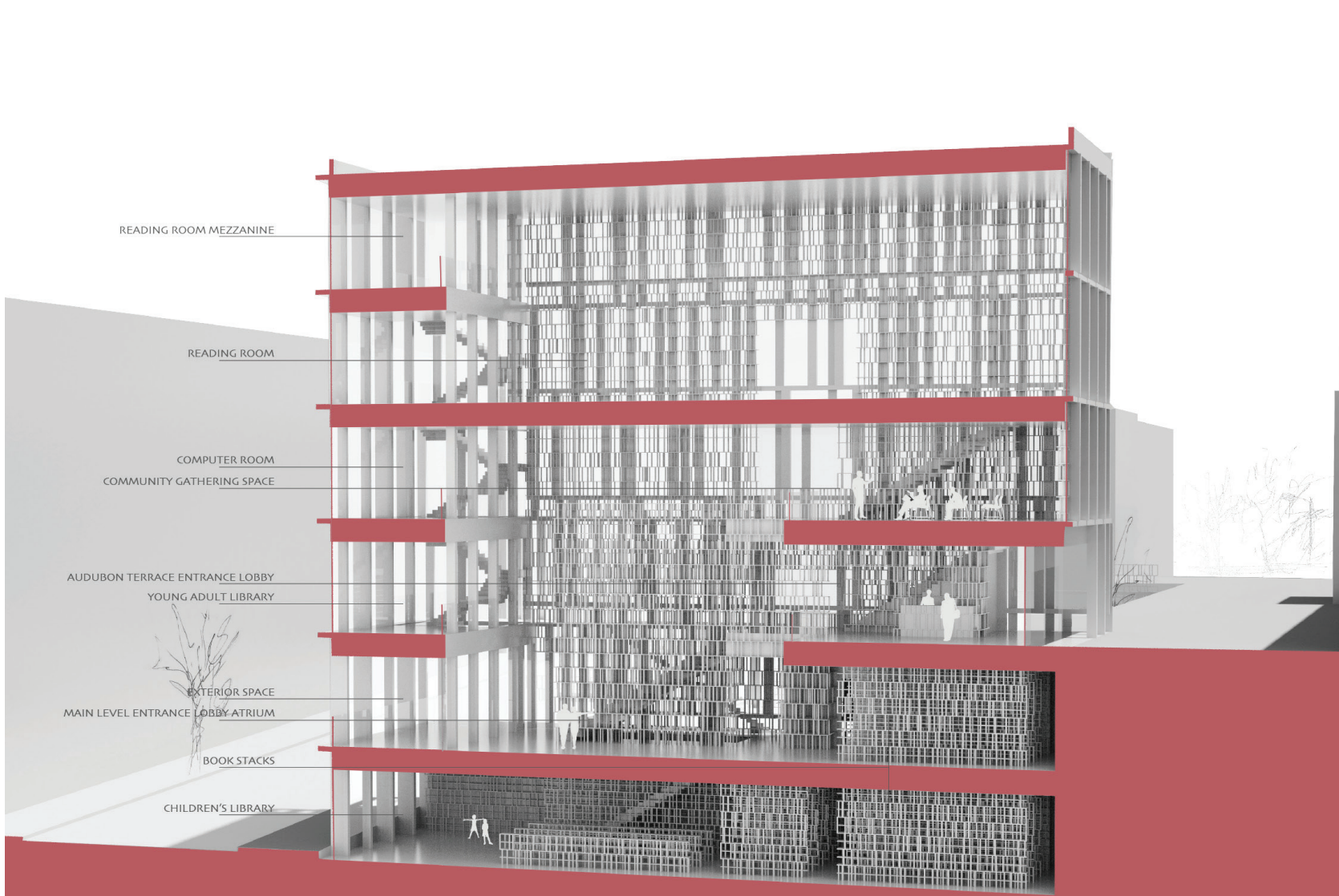
AXONOMETRIC PLAN - LEVEL 1 - EL CID PARK/ MAIN ENTRANCE LEVEL

- 6 - ENTRANCE LOBBY/ READING SPACE
- 7 - CIRCULATION DESK
- 8 - MAIN LIBRARIAN'S OFFICE
- 9 - CHILDREN LIBRARIAN'S OFFICE
- 10 - STAFFS BREAK ROOM
- 11 - EXTERIOR SPACE
- 12 - BOOK STACKS
- 13 - RESTROOMS



AXONOMETRIC PLAN - LEVEL 2 - AUDUBON TERRACE ENTRANCE LEVEL

- 14 - ENTRANCE LOBBY/ READING SPACE
- 15 - YOUNG ADULT LIBRARY
- 16 - MAIN LEVEL ATRIUM
- 17 - BOOK STACKS
- 18 - RESTROOMS



READING ROOM MEZZANINE

READING ROOM

COMPUTER ROOM  
COMMUNITY GATHERING SPACE

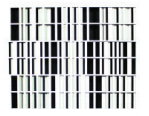
AUDUBON TERRACE ENTRANCE LOBBY  
YOUNG ADULT LIBRARY

EXTERIOR SPACE  
MAIN LEVEL ENTRANCE LOBBY ATRIUM

BOOK STACKS

CHILDREN'S LIBRARY

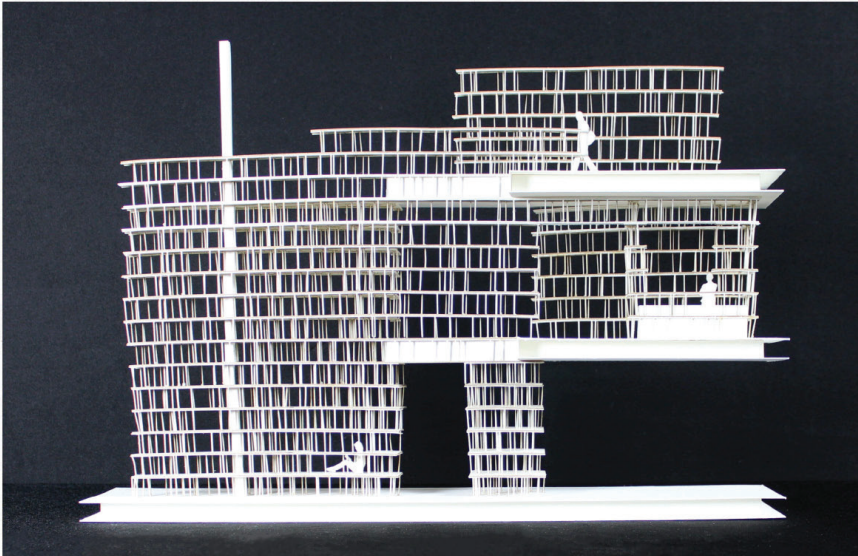
LONGITUDINAL SECTION PERSPECTIVE FACING EAST



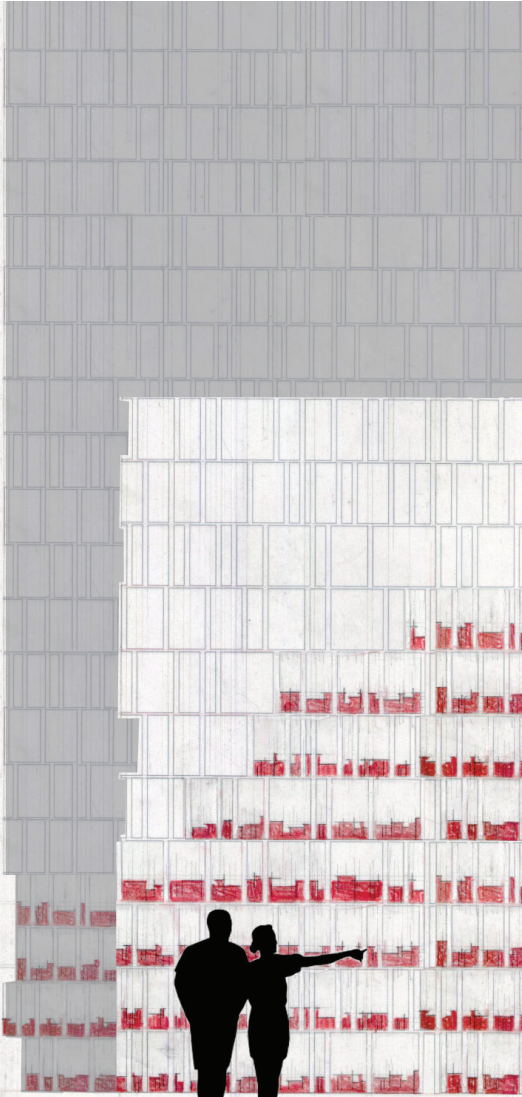
BAS RELIEF STUDIES



ANIMATED TERRACE



ANIMATED POCHE WALL MODEL



ANIMATED POCHE WALL DIAGRAM

