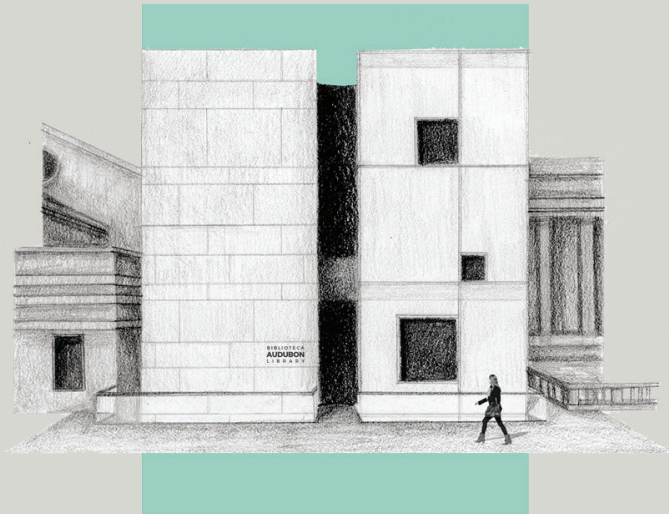


2017 THIRD PLACE

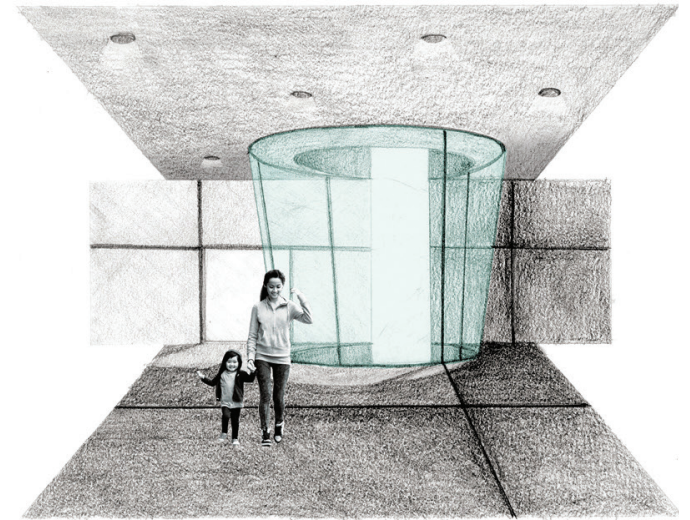
Rachel Coulomb

LYCEUM

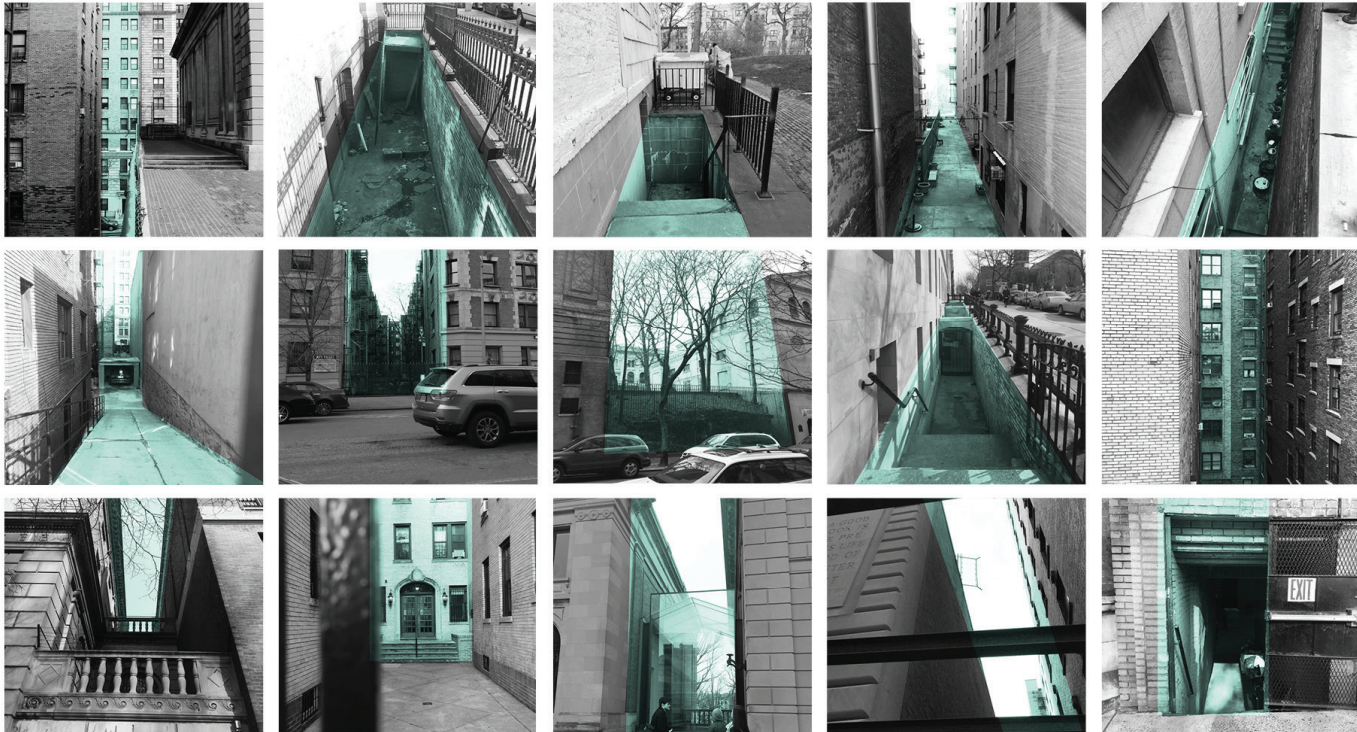
*A traveling fellowship in Architecture*



**WITHOUT**



**WITHIN**



The Audubon Terrace Branch Library draws upon the language of the local city fabric with its slots, indentions, stairways and alleyways. Rather than the slot being a leftover or disjointed connection between two buildings, it becomes the library's main entrances, drawing the user to the space **WITHIN**.



site boundary



pull from existing



access from street



3 main entrances



lightwell as void



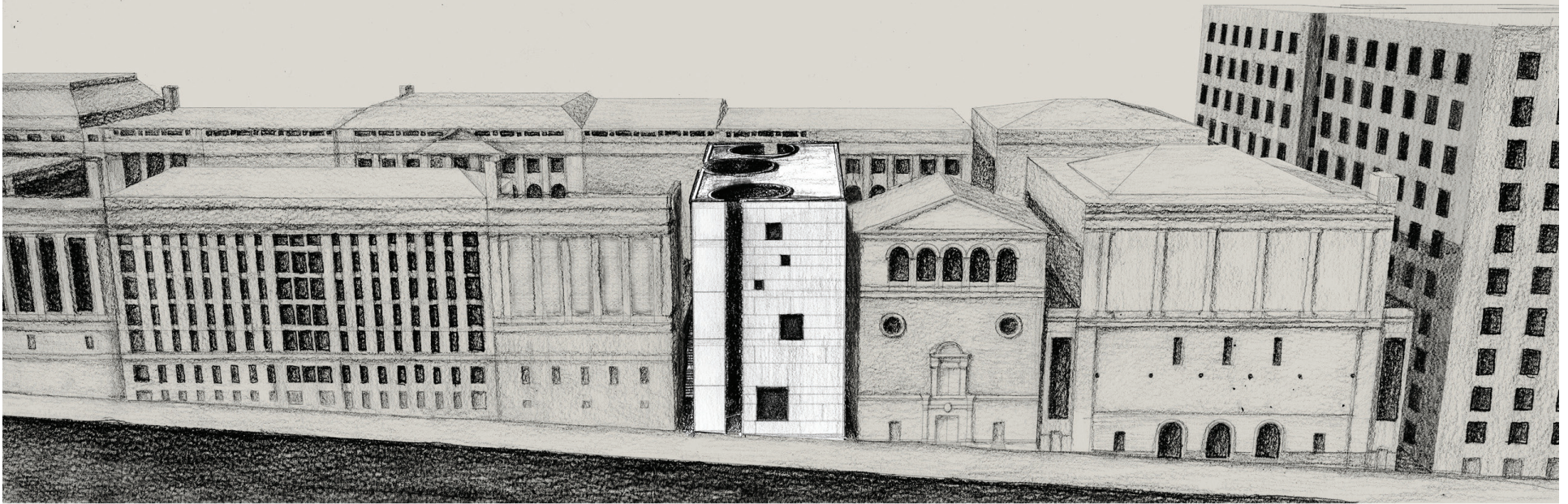
served | servant

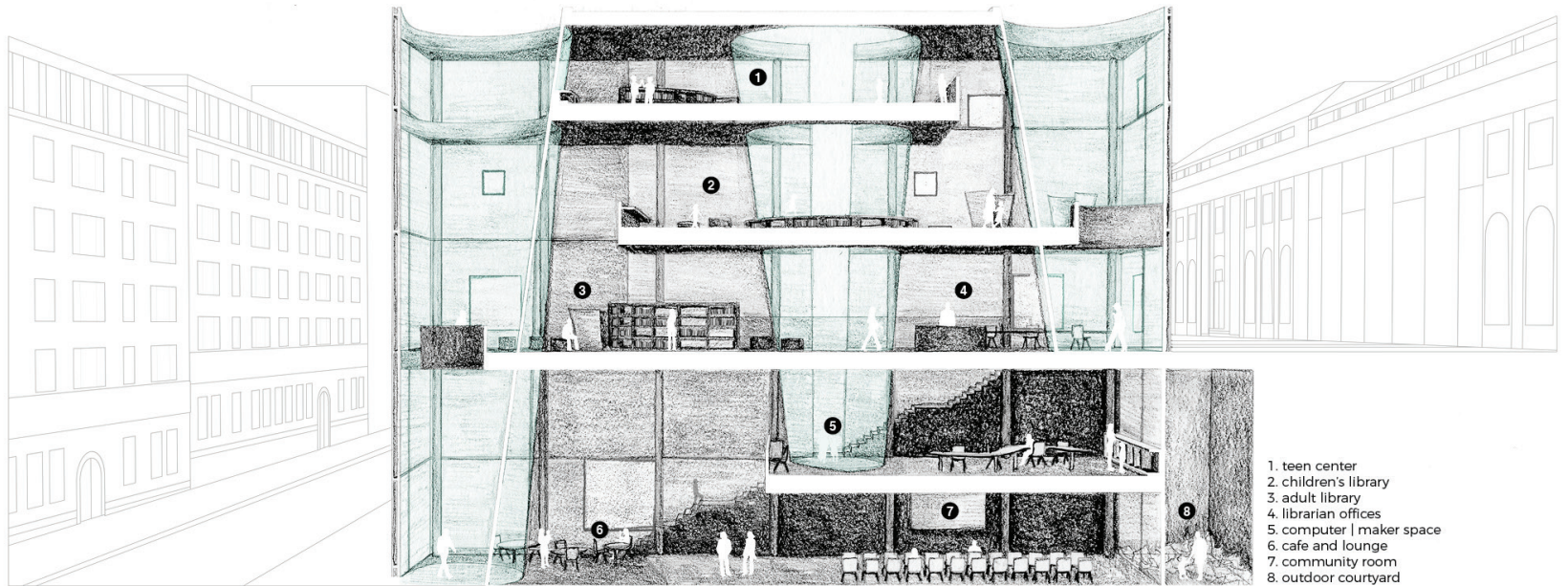


access to balconies

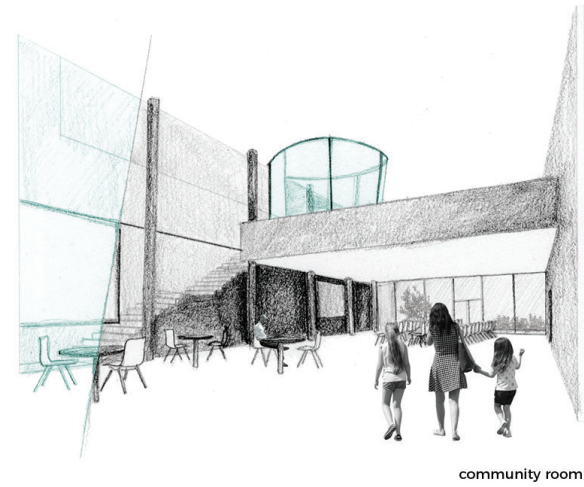
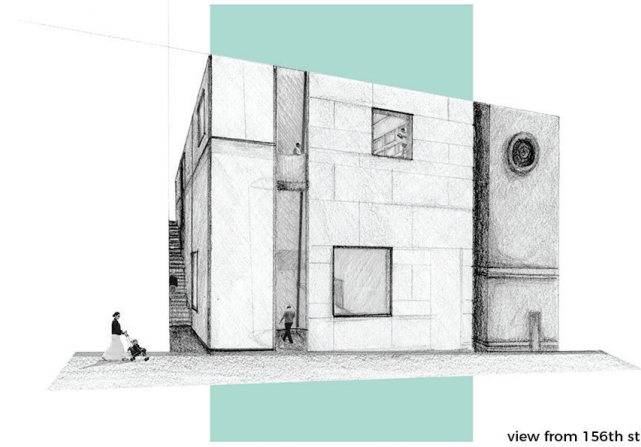
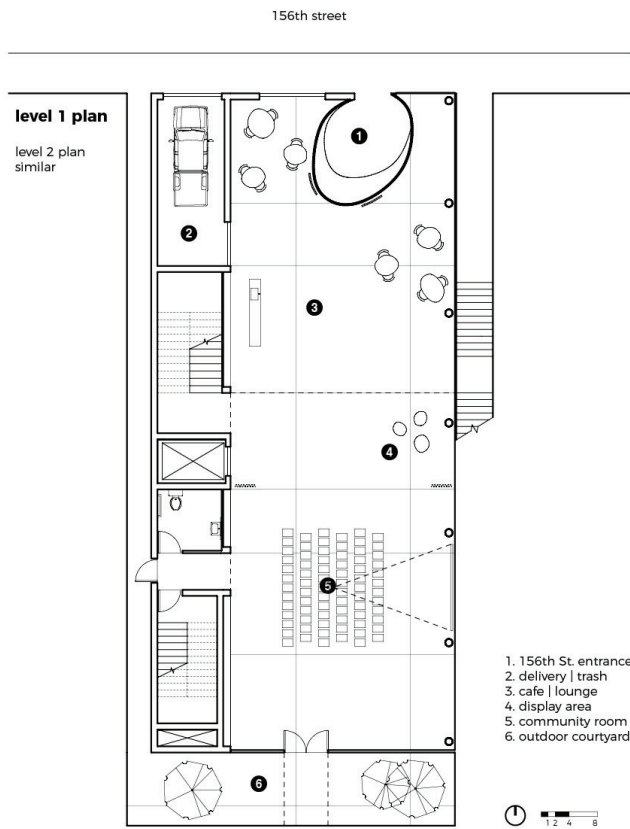


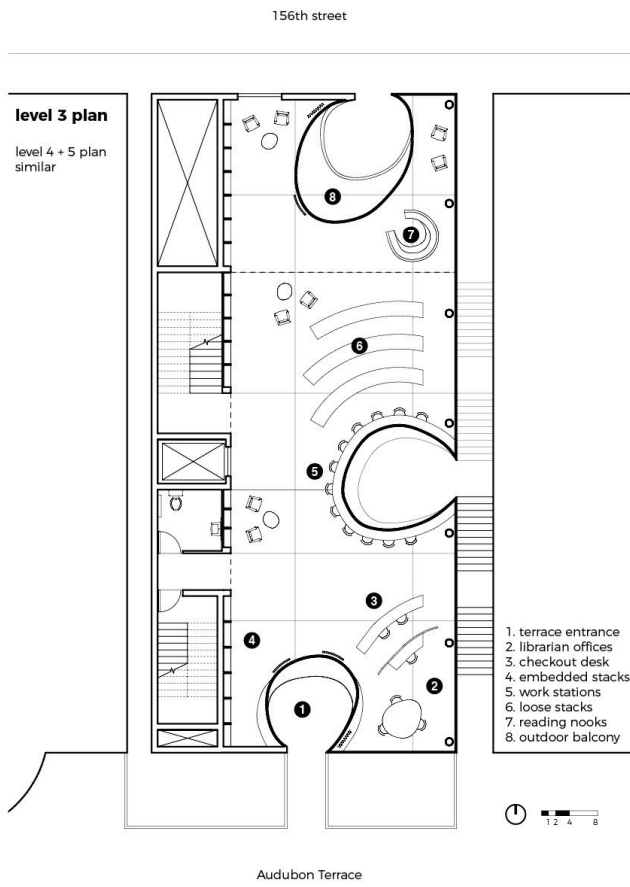
lightwell expansion



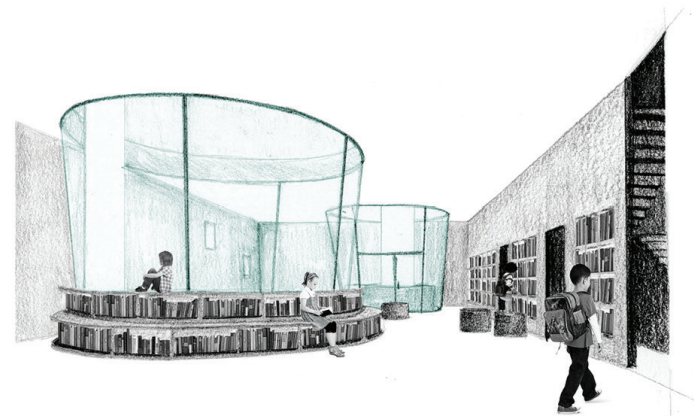


Once inside, a new language is presented. Three organic forms pierce the building creating light-wells behind the slotted entrances. The void of the light well grows as one moves up the building creating a stronger contrast between the interior and exterior. **WITHIN** and **WITHOUT**.

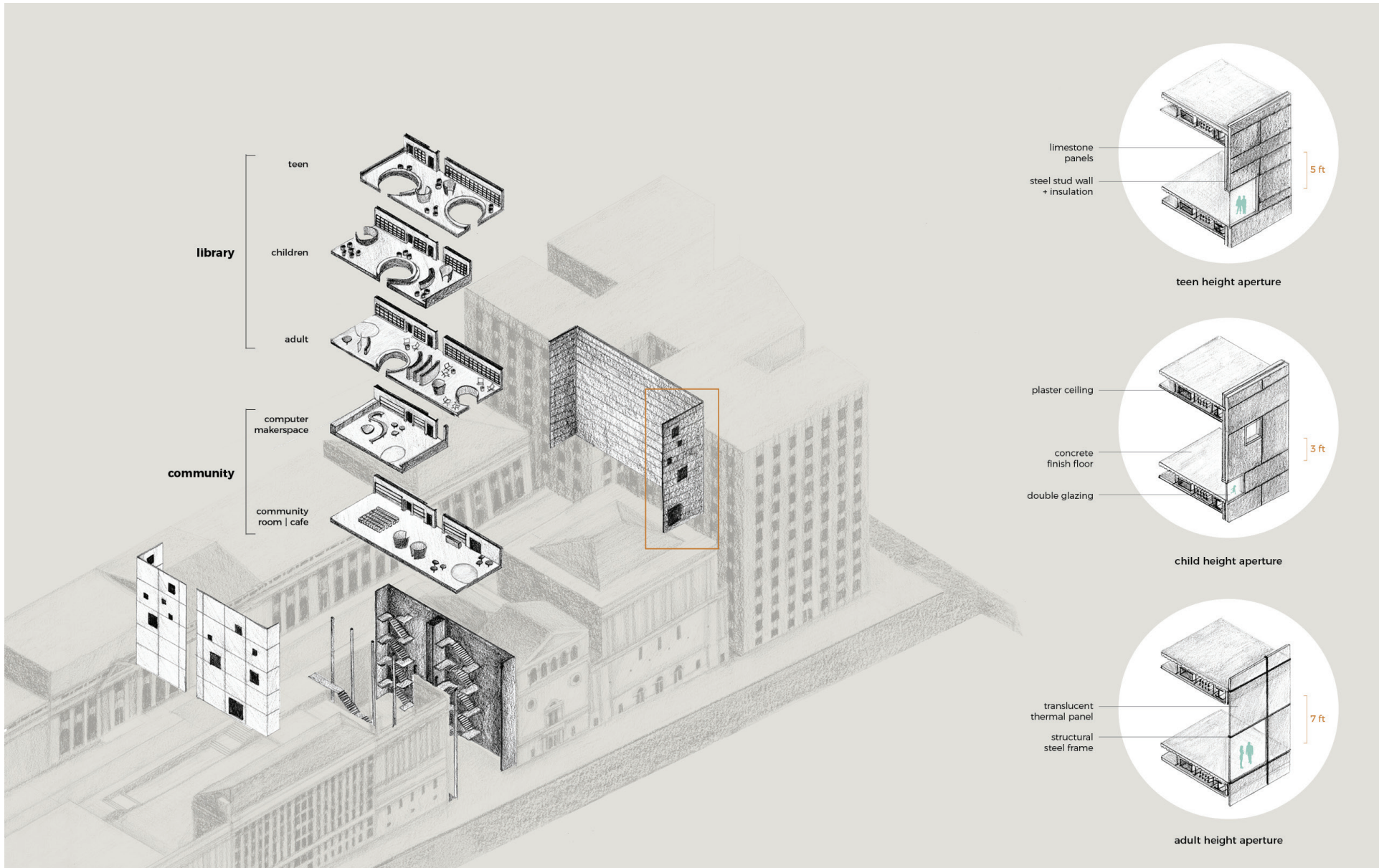




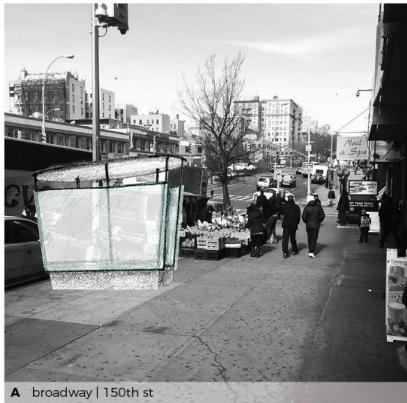
view from Audubon Terrace



children's reading room







A broadway | 150th st



B sugar hill children's museum of art & storytelling



C coogan's bluff



D sylvan terrace



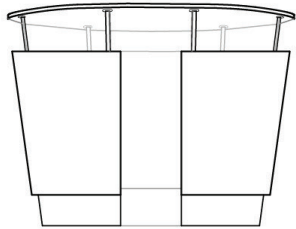
E amsterdam avenue metro



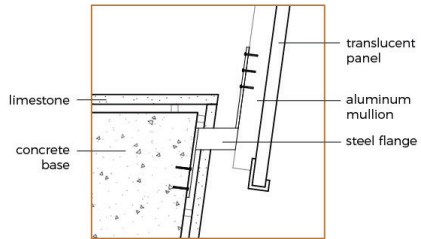
F audubon ave | 167th st



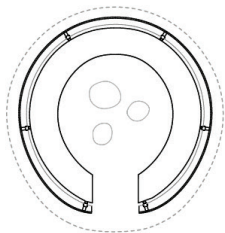
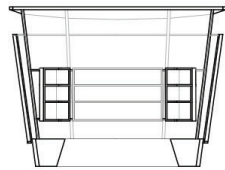
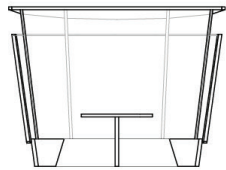
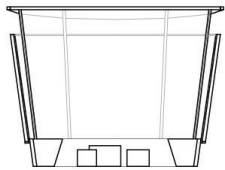
In order to further the outreach and accessibility of the library, a series of library annexes are placed at key locations in the neighborhood. These annexes respond to community needs with flexible options such as space for language classes or story rooms. The annexes invite pedestrians to pause, engage with the world of books, and remind them that there is a more extensive community resource nearby.



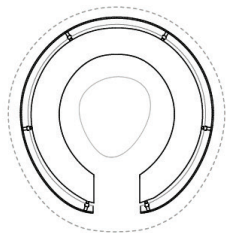
elevation



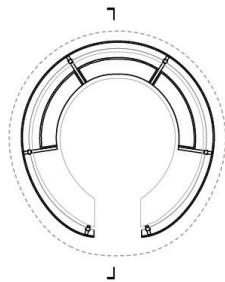
connection detail



story room annex



language class annex



leave a book | take a book annex



**WITH OTHERS**