

2017 SECOND PLACE

Ambikesh Mishra

LYCEUM

*A traveling fellowship in Architecture*



## RECONSTRUCTING ASSOCIATIONS

*That it was shy when alive goes without saying  
We know it vanished at the sound of voices .....*

*Where legend has it some once common bird  
Decades ago was first not seen, not heard .....*

*-AE Stallings*

# ATLANTIC FLYWAY

RECONSTRUCTING ASSOCIATIONS



North American Migration Flyways

Bird migration in the American continent is a north-south movement with lanes of heavier concentration following the coasts, mountain chains and river valleys along four major routes



The Atlantic Flyway

The Atlantic flyway has multiple routes along the East Coast, few of which that pass through New York City



Passenger Pigeon Migration

The passenger pigeon belonging to the Columbiformes species was an abundant bird with a 2.2 billion population in 1800 along the Atlantic Flyway but went extinct by 1914 due to exploitation

BIRD ECOLOGY	FOOD	HABITAT				PRIORITY BIRDS NYC							
		Families	Urban	Field	Wetland	Bigtree	EX	EW	CR	EN	VU	NT	CD
						Extinct	Extinct in Wild	Critical	Endangered	Vulnerable	Near Threat	Cons. Dep.	Least Conc.
Ciconiiformes													
Accipitriformes													
Strigiformes													
Cuculiformes													
Coraciiformes													
Passeriformes													
Falconiformes													
Columbiformes													



CURRENT ECOLOGY



PROPOSED ECOLOGY

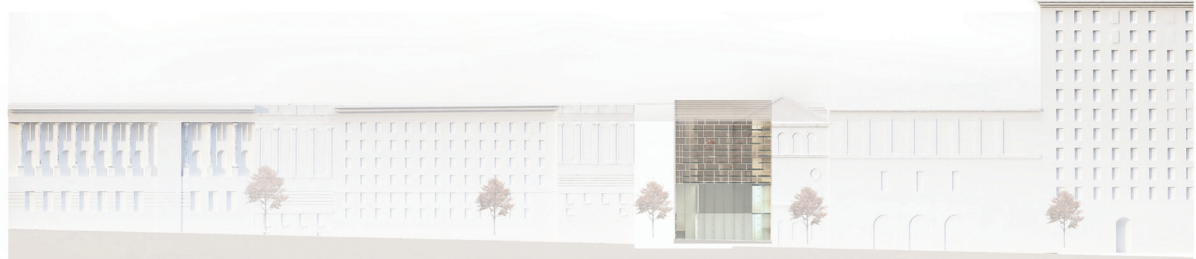


## TOPIARY ATHENAEUM

### Project Statement:

The American Passenger pigeon was one of the many birds that used to grace New York City skies. Once one of the most abundant birds in the US, it fell victim to the fallacy that no amount of exploitation could endanger the species. The National Audubon Society is dedicated to the mission of conserving the great American birds whom James Audubon famously documented. The site of the library in Audubon Terrace provides an interesting opportunity of raising awareness and suggesting strategies for the promotion of these efforts. 'Reconstructing Associations' is an effort to remind the community about their significance through architectural instruments: silhouettes of the lost pigeon and creating habitats for the birds that fly through or nest in New York.

RECONSTRUCTING ASSOCIATIONS  
■■■



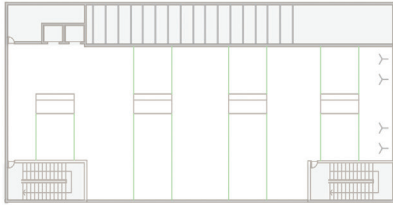
# TOPIARY ATHENAEUM

# RECONSTRUCTING ASSOCIATIONS



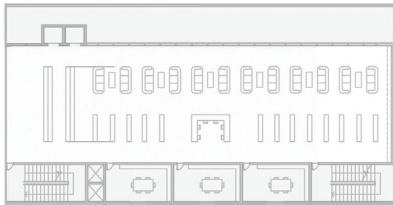
Roof Level

Bird feeding areas, sanctuary and nesting for owls, hawks, observatory towards Hudson

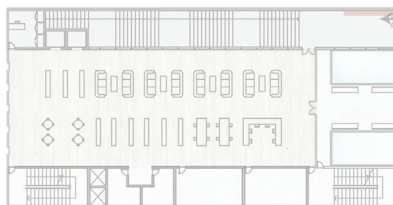


Level 4

Children's Area, Main reading room, private reading spaces, offices

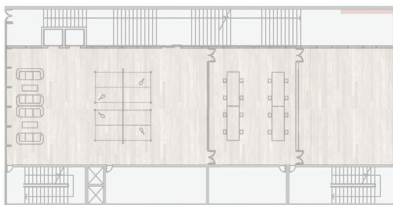


Audubon Terrace Level  
Children's Area, Main Circulation Desk, The bird wall (See Sheet 7 details)



Level 2

Teen Centre, Computer Training & Mechanical Spaces



156th Street Level  
Community Center with storage, kitchenette



Owls & Hawks

The branch library rooftop contains a garden with bird feeding areas with dedicated foods and information about different accipitriformes that inhabit the building



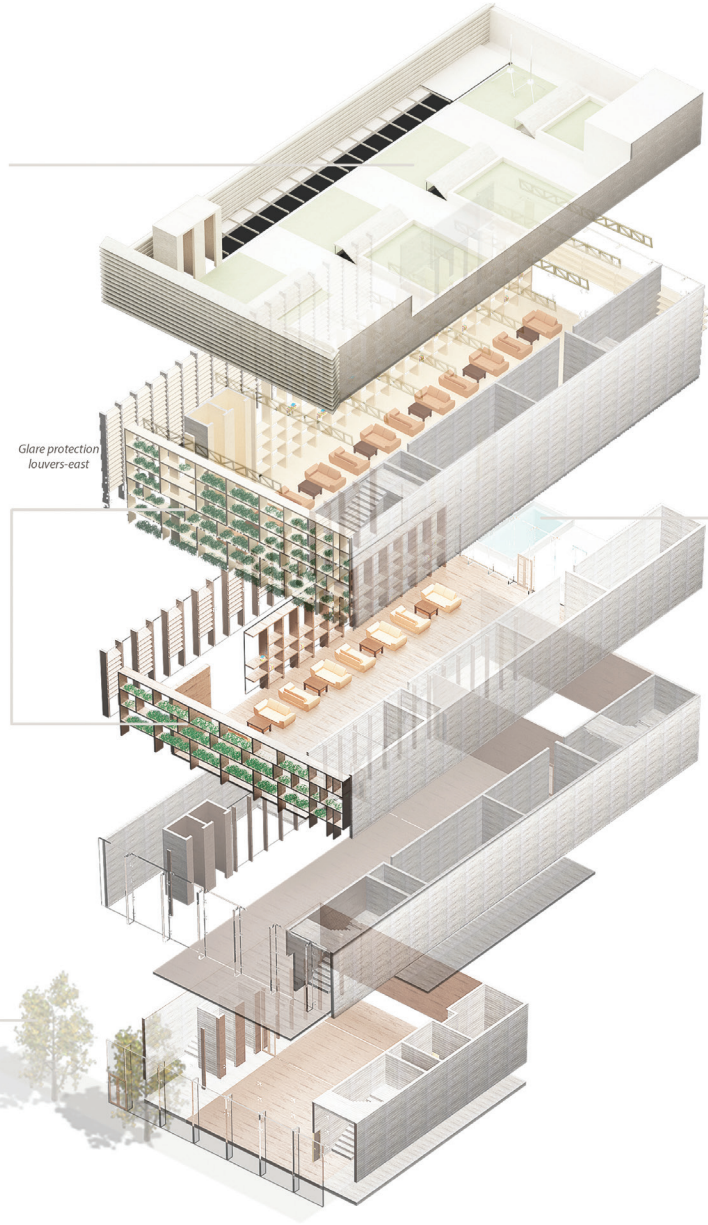
Pigeons

The street facade is a British dovecot inspired pigeon facade that provides a nesting habitat with palm fibers anchored to the substructure



Woodpeckers, Wablers

The big trees in front of the library on the sidewalk of 156th Street are proposed to house Falconiformes



Bird Observatory facing Hudson

South facing light shelves

Glare protection louvers-east



Storks, aquatic birds

The entry of the library at the terrace level aims to accomplish two objectives: provide outdoor seating for people visiting and a small modest habitat for the the Ciconiiformes

Each level of the proposed library seeks to provide a habitat for the different species studied. This is aimed at enhancing the primary community and reading functional experiences of the spaces.



SECTION DD

The branch library seeks to create an enticing experiences for all visitors. Each program element is intertwined with the birds of the city. The teen centre has direct view to big trees outside the street, the children's area has pigeon feeding zone in the story room while the main reading space perches the 'pigeon facade'. The roof houses bird feeding areas as well as an observatory with a view to the Hudson.

# EPHEMERAL SILHOUETTES NIGHT

Catastrophic decline



1800

Flock estimated around 2.2 billion birds over Kentucky

1840

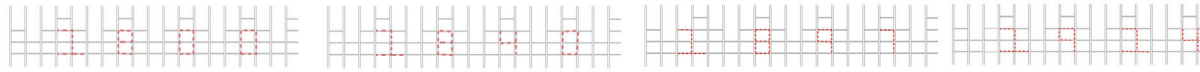
Flock estimated around 1.1 billion birds over Kentucky. "The sky was black for 3 days" (Audubon)

1860

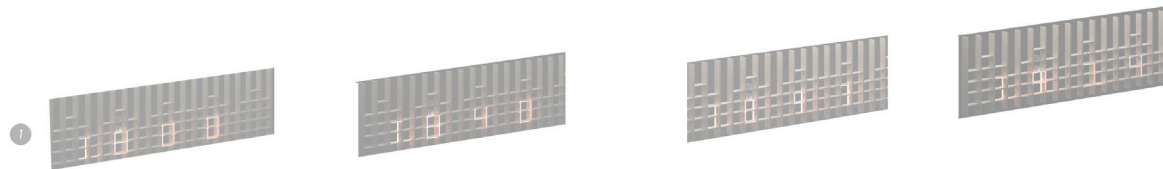
Flock estimated around 0.7 billion over Ontario

1914

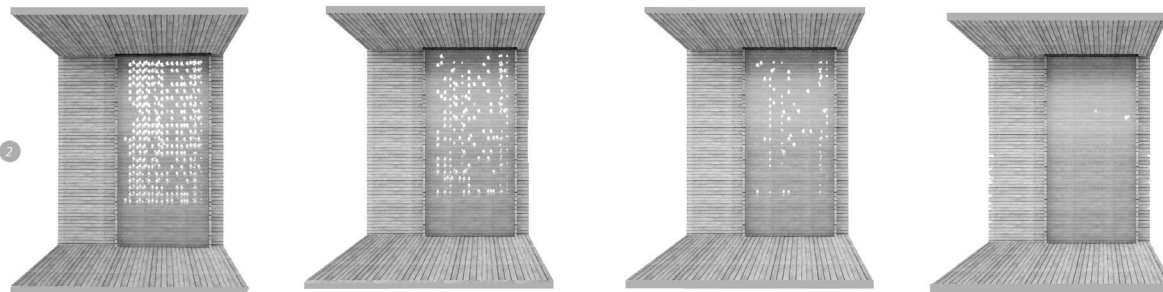
Last Pigeon died in Captivity



Tracing the reading room bookshelf grid



The shelves are lit with backlit LED lights that display years from the timeline of the American Passenger pigeon



18:30

20:00

22:00

23:30



"All there are left are silhouettes, the bird not seen not heard"



## EPHEMERAL SILHOUETTES DAY

The library entrance serves as a reminder of the passenger pigeon. The shadows are created on frosted glass by the morning sun on the east facade. The fleeting shadows are only witnessed during the morning and disappear as the day goes on. Metaphorically the passenger pigeon silhouettes appear in the east facade and vanish at noon.

Section BB

