

2015 MERIT

Sarah Tappe

LYCEUM

A traveling fellowship in Architecture

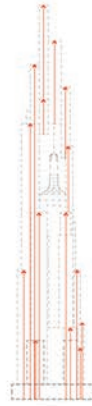




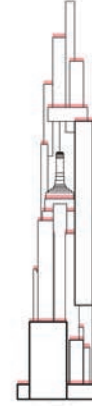
ISOLATION



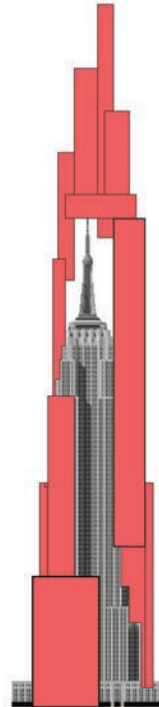
CLUSTERED



VERTICAL NEIGHBORHOODS

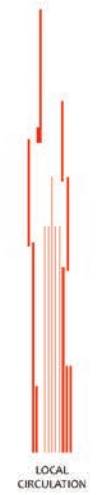
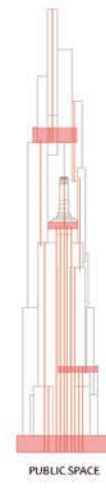
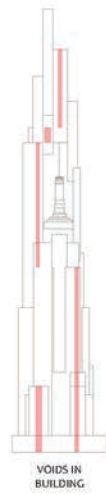
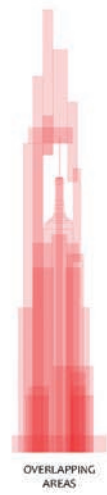


GARDENS

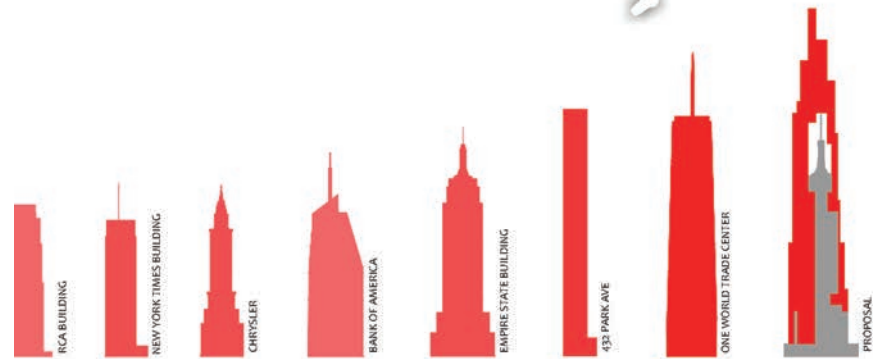


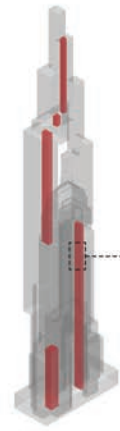
THE EMPIRE STATE BUILDING FORMS THE STRUCTURAL AND METAPHYSICAL CORE OF A NEW BUILDING THAT WILL BECOME THE TALLEST SKYSCRAPER IN MANHATTAN - PRESERVING THE BUILDING'S ORIGINAL INTEGRITY WHILE PROVIDING A NEW ASPIRATION FOR NEW YORKERS. THIS SYMBOL OF CHANGE REFLECTS THE ADVANCEMENT OF LIFE AND PROVIDES A NEW LIVING EXPERIENCE FOR SENIORS AT MULTIPLE SCALES THROUGH DISTINCT NEIGHBORHOODS IN THE SKY. THE NEW BUILDING CONSISTS OF VERTICAL CLUSTERS THAT TERMINATE AS PUBLIC AMENITIES AND ROOF GARDENS. THESE GARDENS IN THE SKY BECOME GATHERING PLACES FOR SOCIAL COMMUNITIES THAT SIMULTANEOUSLY LOOK TOWARD THE CITY AND THE ORIGINAL BUILDING. WITH VARYING DEGREES OF PUBLIC AND PRIVATE SPACE, RESIDENTS CAN FIND A SAFE HAVEN IN MORE PRIVATE AREAS OR SOCIALIZE WITH GROUPS. THE OLD AND THE NEW WILL RECIPROCATATE, CASTING LIGHT ON ONE ANOTHER THROUGH THE VOID SURROUNDING THE PEAK OF THE HISTORICAL BUILDING WHILE THE BUILDING REINVENTS ITSELF AS THE BOLD ICON OF NEW YORK CITY.





MONUMENTAL CORE
STEP OFF INTO MODERN REALM
THE PAST, MOVING FORWARD





VERTICAL VOIDS

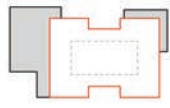
COMMUNICATION AMONG FLOORS
WITH LARGER COMMON AREAS EVERY 4
FLOORS

GARDENS CAN BE USED FOR
GROWING ONE'S OWN FOOD

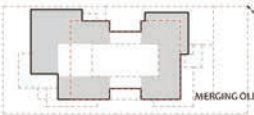




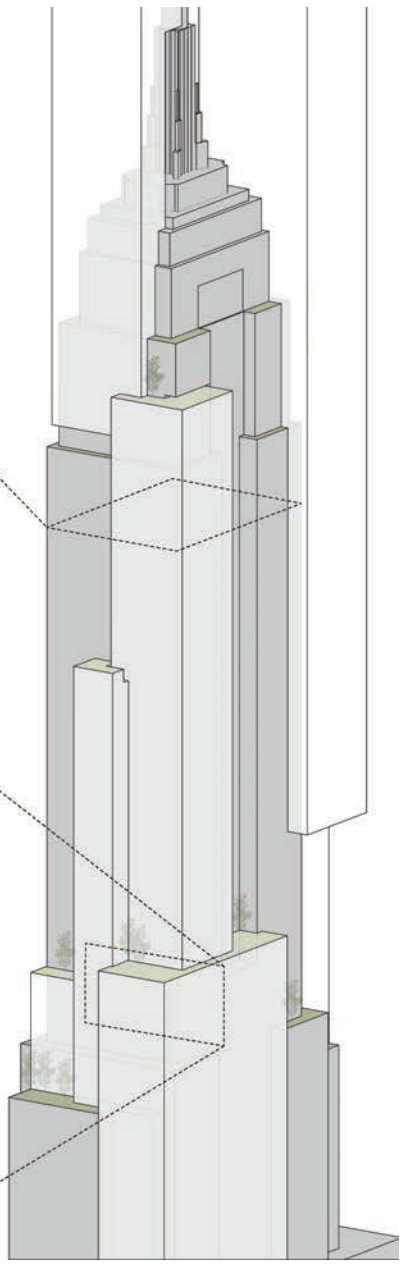
EXISTING CONDITIONS

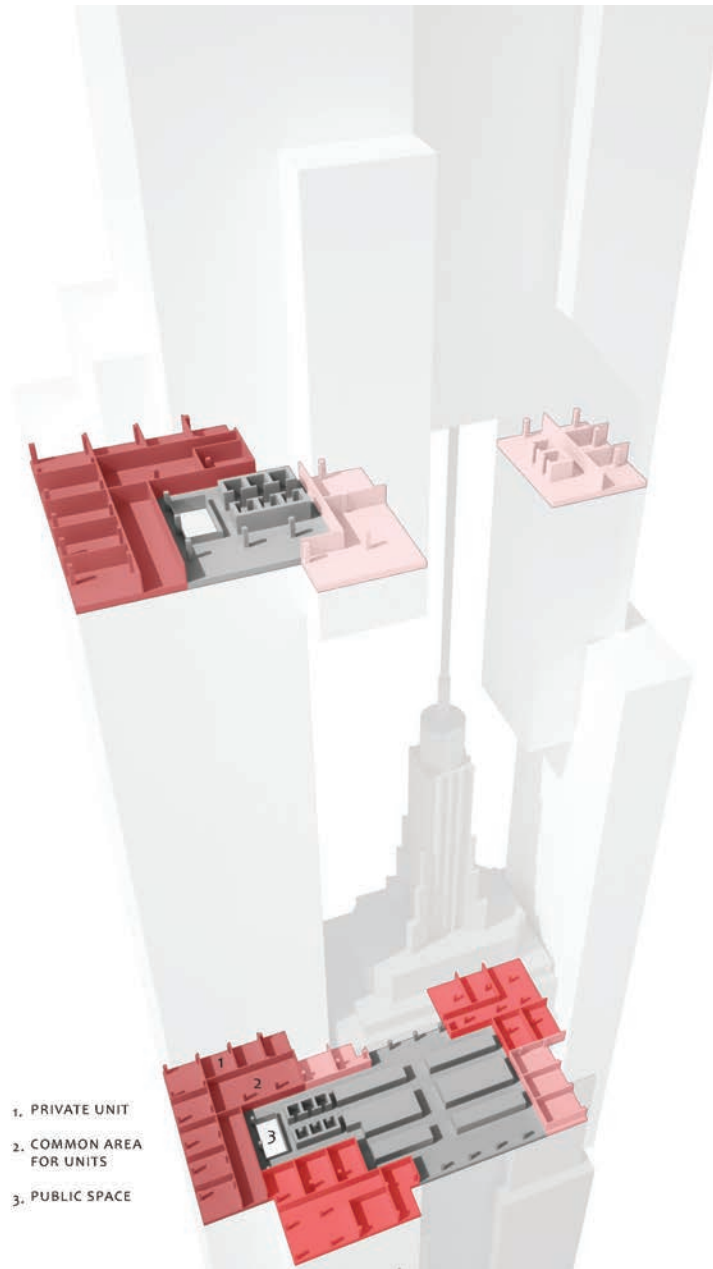


NEW ADDITIONS

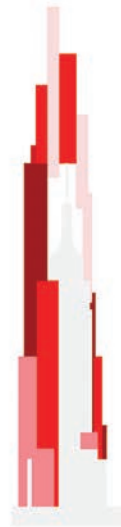


MERGING OLD WITH NEW





- 1. PRIVATE UNIT
- 2. COMMON AREA FOR UNITS
- 3. PUBLIC SPACE



- SKY UNITS**
 PRIVATE SINGLE UNITS WITH LARGE AMOUNTS OF TRANSPARENCY TO OUTSIDE
- SUNROOM**
 COMMON AREA CONSISTS OF A LARGE LIGHT FILLED SPACE WITH AT LEAST 3 FULLY GLAZED WALLS TO OUTSIDE
- DIFFUSED LIGHT**
 GLAZING AT FRONT AND BACK OF UNIT DIFFUSES THE LIGHT THROUGH TO THE COMMON AREA IN CENTER OF UNITS
- PRIVATE BALCONIES**
 EACH UNIT HAS A PRIVATE BALCONY AND COMMON AREAS ARE MORE INTERIOR
- EXISTING BUILDING**

TIME SPENT AT HOME



