

2015 MERIT

Haley Davis

LYCEUM

*A traveling fellowship in Architecture*



*age in place.*



Empire State Building under construction in 1929

*“The problem is not architecture. The problem is the reorganization of things that already exist.”*

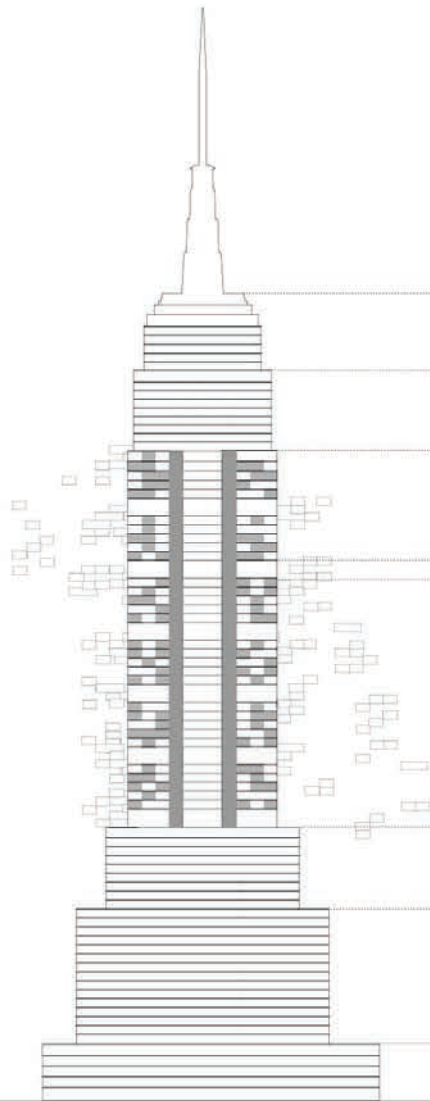
-Yona Friedman

As we age, our needs and wants do not fundamentally change, but in the current structure, our environments do. We don't want to have to move to a care facility and have our lives completely restructured when we are at our weakest. Either by personal choice or financial ability post retirement, we want to

***age in place.***

how can we draw attention to our rapidly aging population?





## Program

Tourism

**Senior Vacation Rentals**  
*Retirees love to travel but sometimes need some additional health support.*

Clip-In Housing

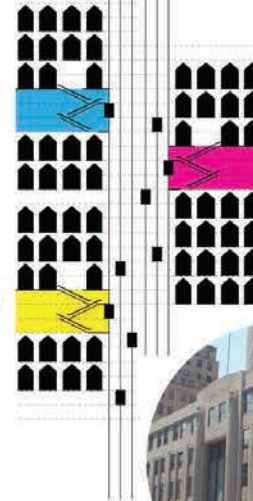
**Work Hubs**  
*1 in 4 Americans 44-70 are interested in starting business or nonprofit ventures in the next 5 -10 years.*

*These work spaces would bring the public in and allow the residents to share their wisdom with society.*

Health

Rentable Office

Commercial Retail + Grocery



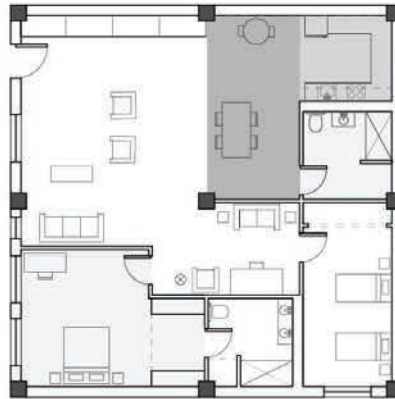
## Unit Evolution

How can we invest in our retirement early to be safe from economic crashes & real estate value loss in a changing and chaotic market?  
We could build a home where the lifecycle of the architecture parallels the life cycle of the inhabitant.



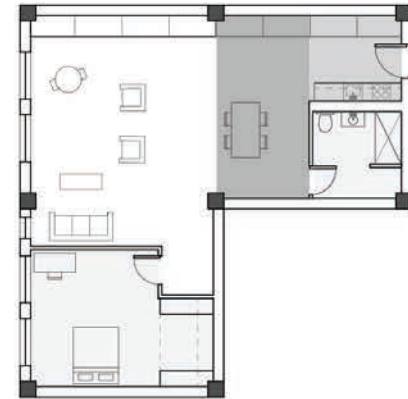
### *invest*

by investing in the modular components of a home for an early age you are preparing for your retirement from the moment you start establishing a home



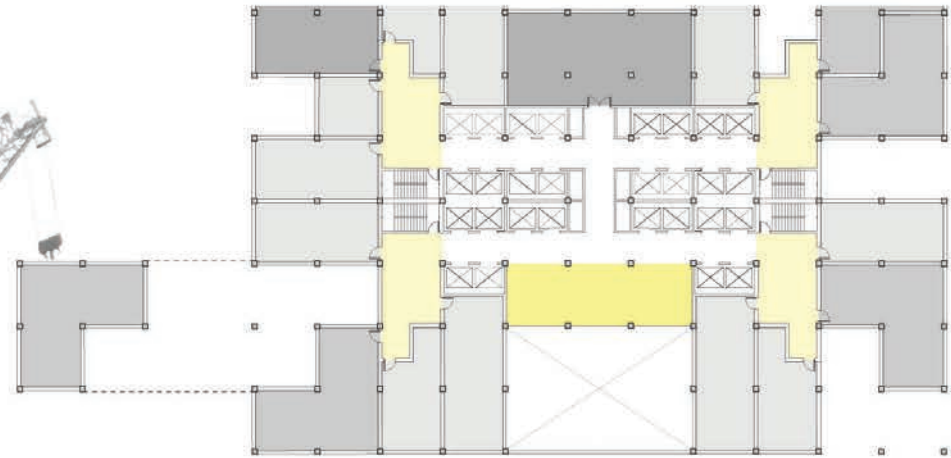
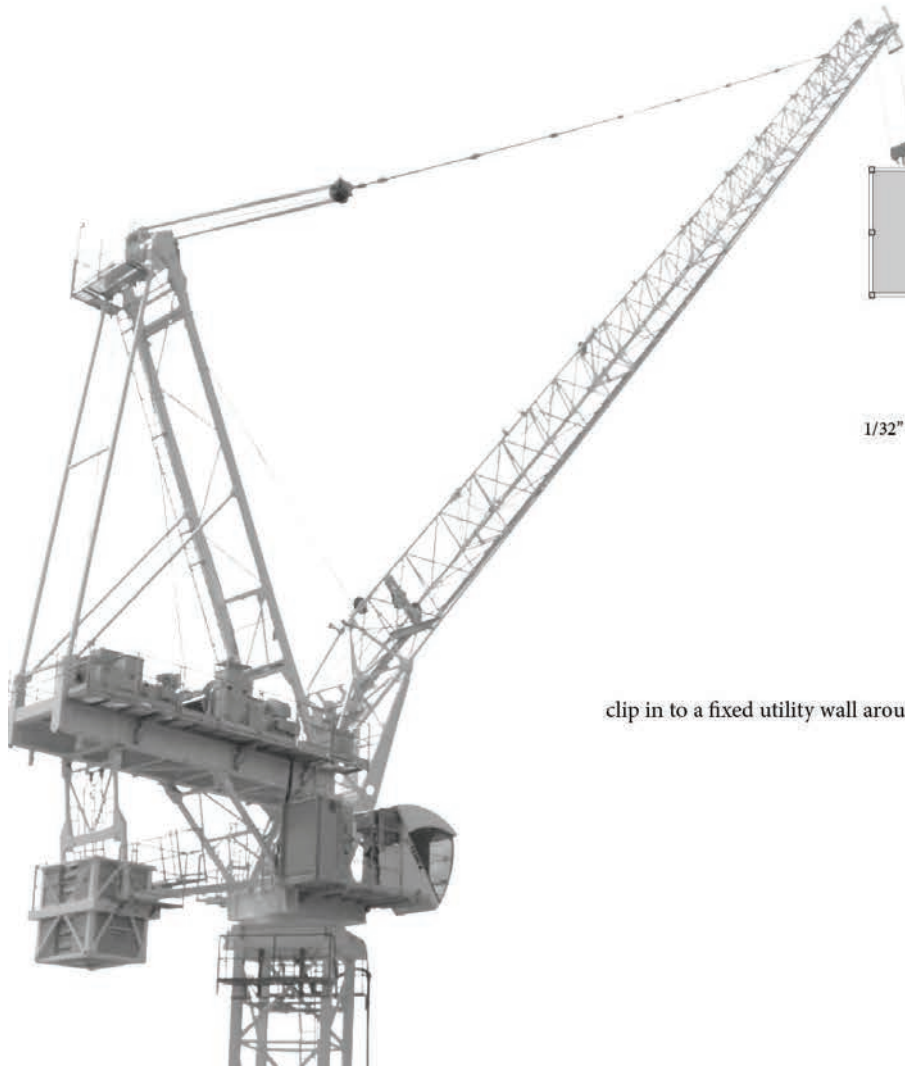
### *expand*

as your family and your needs grow you purchase more components and continue to build your life in your home



### *reduce*

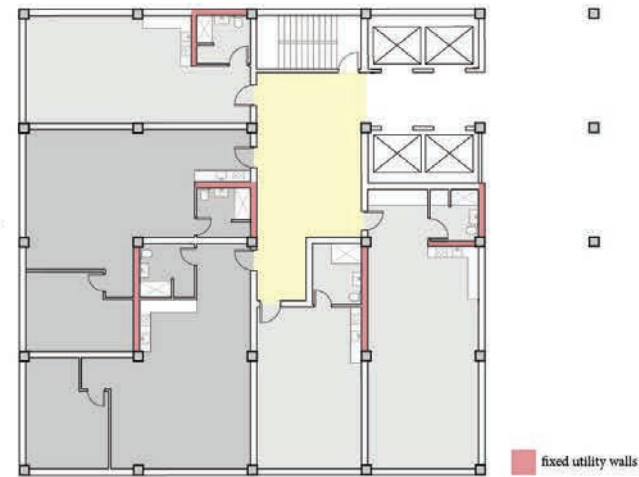
allows you to move the home you have built up over a lifetime with you to plug into a network of support that can provide the care you need in your later years.



1/32" = 1'

3+ bed suites 2 bedroom 1 bedroom floor commons cluster commons

clip in to a fixed utility wall around community zone.



1/16" = 1'

fixed utility walls



unit as part of a larger system.





moving should be a theatric event.