

2015 MERIT

Evan Hursley

LYCEUM

A traveling fellowship in Architecture

filling the empty state building



te Build-
 o accommo-
 ndividuals
 production
 e exterior
 nt and op-
 gather as
 . These
 are de-
 encourage
 ational
 litude of
 nits con-
 ble-height
 shared be-
 lder and
 s in order
 nteraction
 e genera-
 . Through-
 structure,
 paces are
 ich house
 fulfill
 the resi-
 ming pool
 o the sky-
 al rooms
 intelli-
 tivity, a
 religious
 nnect the
 back to
 and every-
 sts in be-
 e a way of
 fulfilling
 the aged,
 as well.

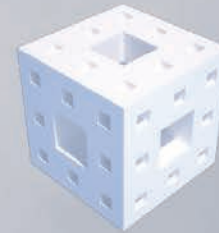


empty state building



senior living, close to the ground

multi-generational living with gathering spaces



menger sponge

provides opportunity to cut voids for light and social space

the exterior reflects what occurs on the interior important social spaces have a large opening to the exterior

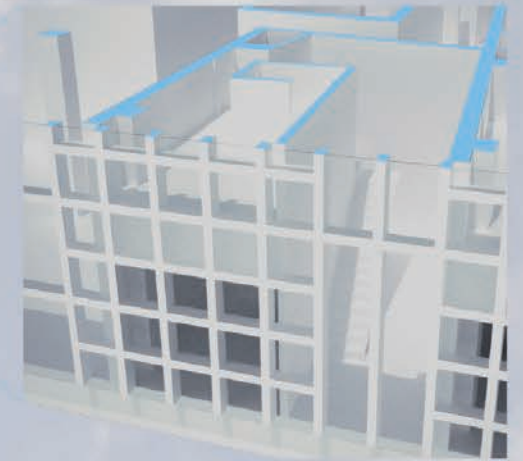
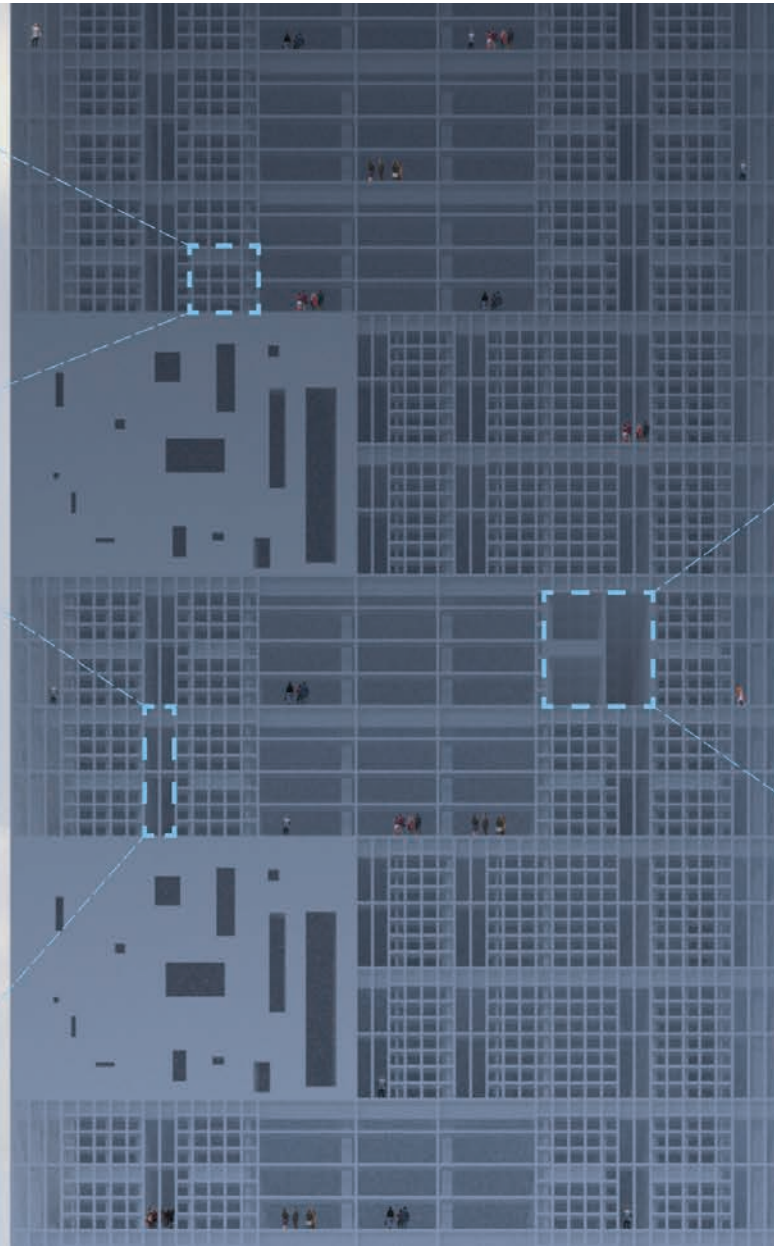
residential



bedroom creates a cozy retreat from the bustling city with a view



the lofted units culminate in a double-height space that encourages interaction among the generations



units are made to accommodate young and old in a lofted apartment

youth occupy the top
aged occupy the bottom

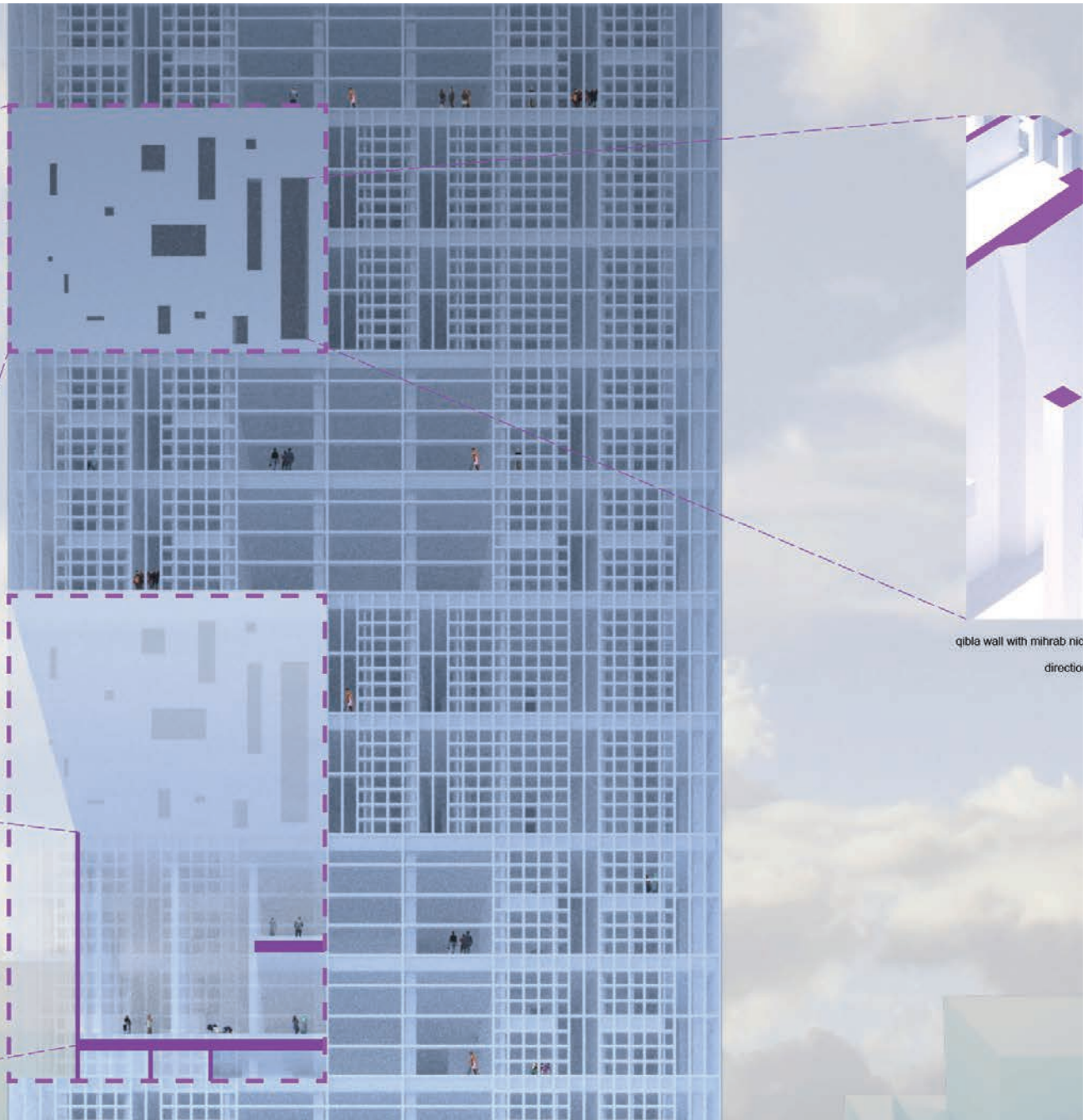
spiritual



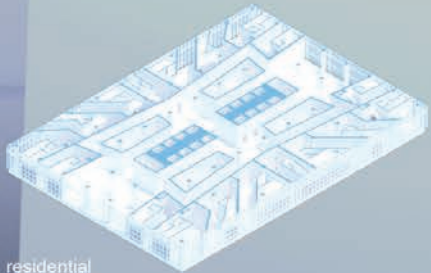
every spiritual space can accommodate any religion, creating an intertwined community



approach is framed by a large window representing the infinite

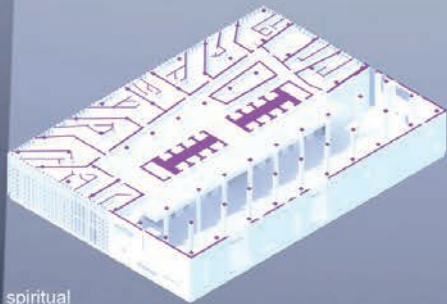


qibla wall with mihrab niche
direction



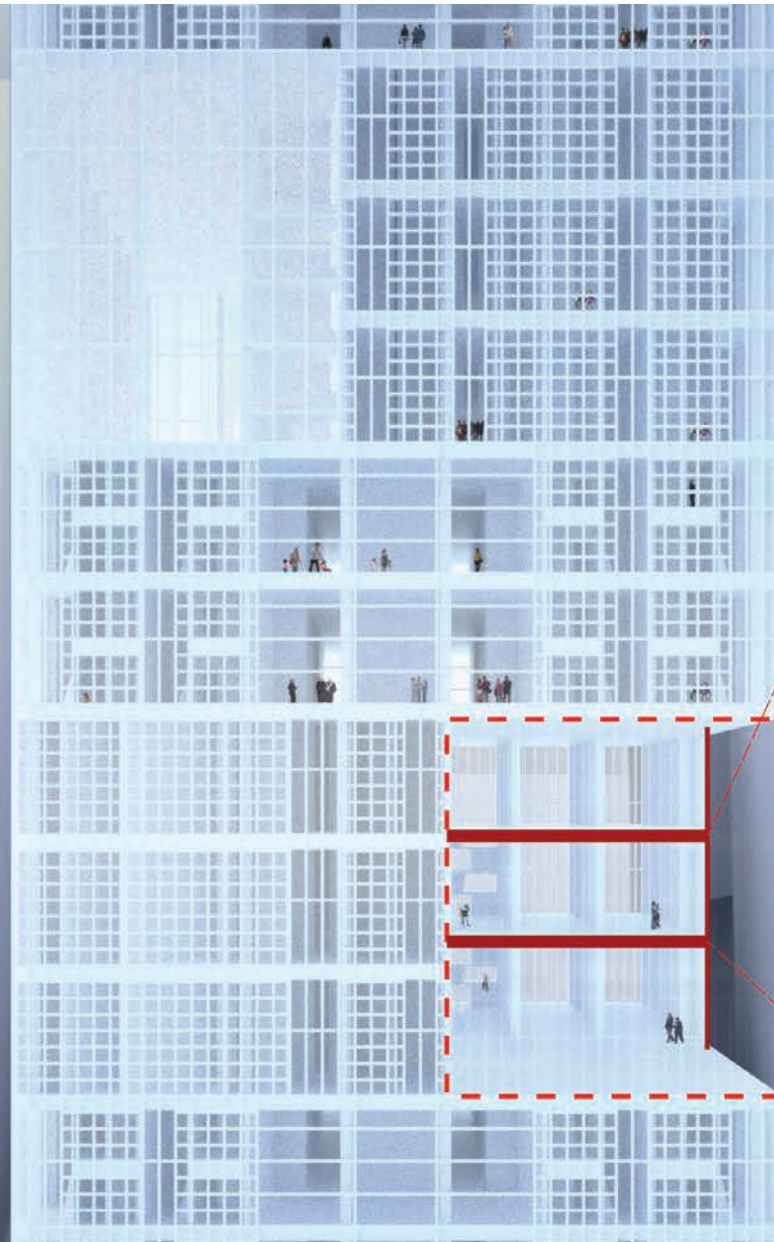
residential

floor plan is organized to maximize daylight in every unit and the circulation spaces



spiritual

floor plan is organized around creating a large gathering space



library



keeping the mind active is important for people of all ages, the library creates an environment that encourages residents to continually better themselves

every residential floor has a gathering space on the east and west to bring light into the core

activity



physical activity is important in every stage of life, the track is one of the many ways that the residents will be able to exercise

gallery

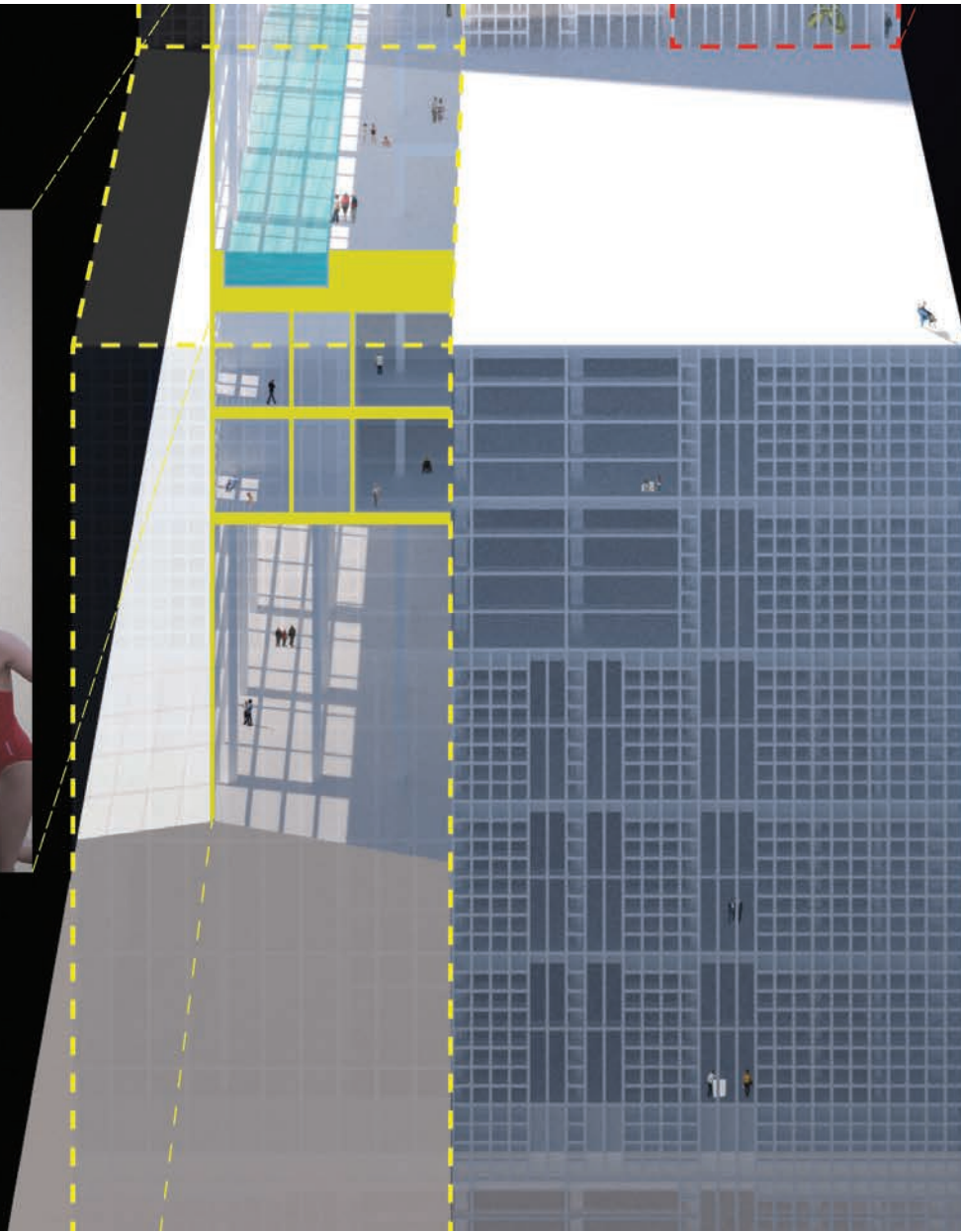


the gallery provides a means for the occupants to expand their creative horizons

natorium



the pool appears to extend into the city, creating an inviting space for all generations to do their daily exercise



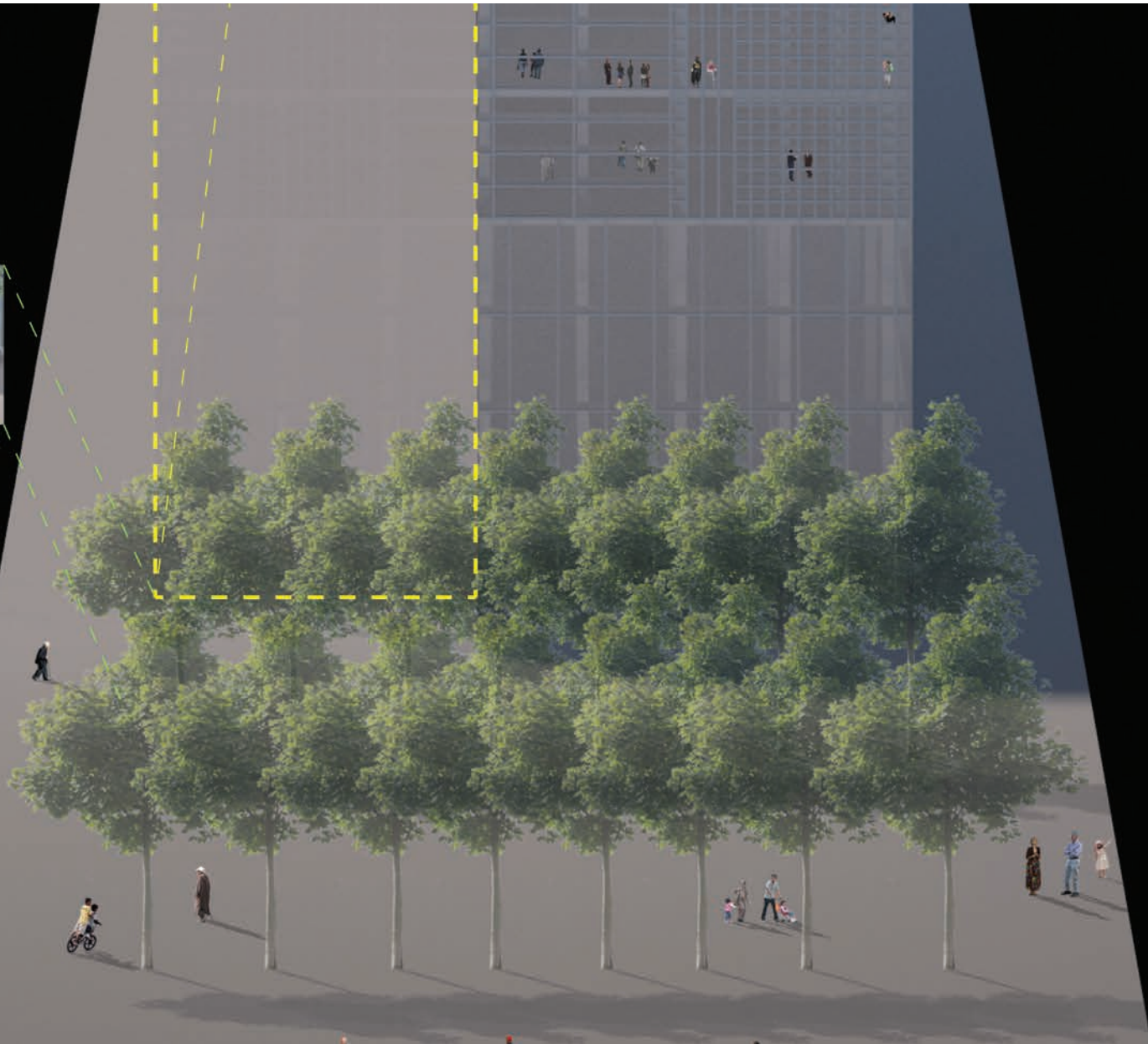
deciding program placement



hypostyle arboretum



the hypostyle arboretum provides a connection back to the natural world within the context of the building





program distribution

