

2015 SECOND PLACE

Dylan Hursley

LYCEUM

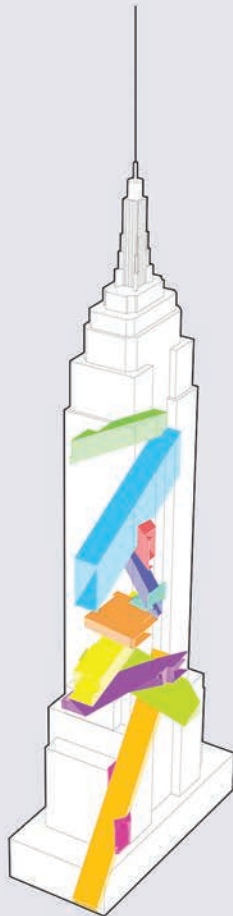
*A traveling fellowship in Architecture*

# LIVE THE SOCIAL SPECTRUM



LYCEUM 2015

The Empire State Building has an important place in history as a true accomplishment of American ingenuity and has earned its place among New York City's skyline. Every building must adapt to current times, and the Empire State Building is not excluded. In transitioning to a building for those of an advanced age, program is formed within a **spectrum** of spaces. The **program** of these spaces become **dream-like** opportunities for people of **all ages** to experience. The intersections of these voids become spatial portmanteaus where the program becomes meshed into one unique space. The voids are oriented toward the city and sky and provide a **juxtaposition** with the unique program that the spaces contain. These spaces are public spaces that provide day-lit communal activities. The program **attracts** visitors and residents to interact with one another.



**STRUCTURING  
A SPECTRUM**



VOID WALLS ARE THICKENED FOR LOAD TRANSFER AND FOR ADDITIONAL LATERAL STABILITY



A CAPTIVE AUDIENCE



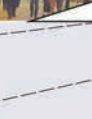
BEACH HOUSE



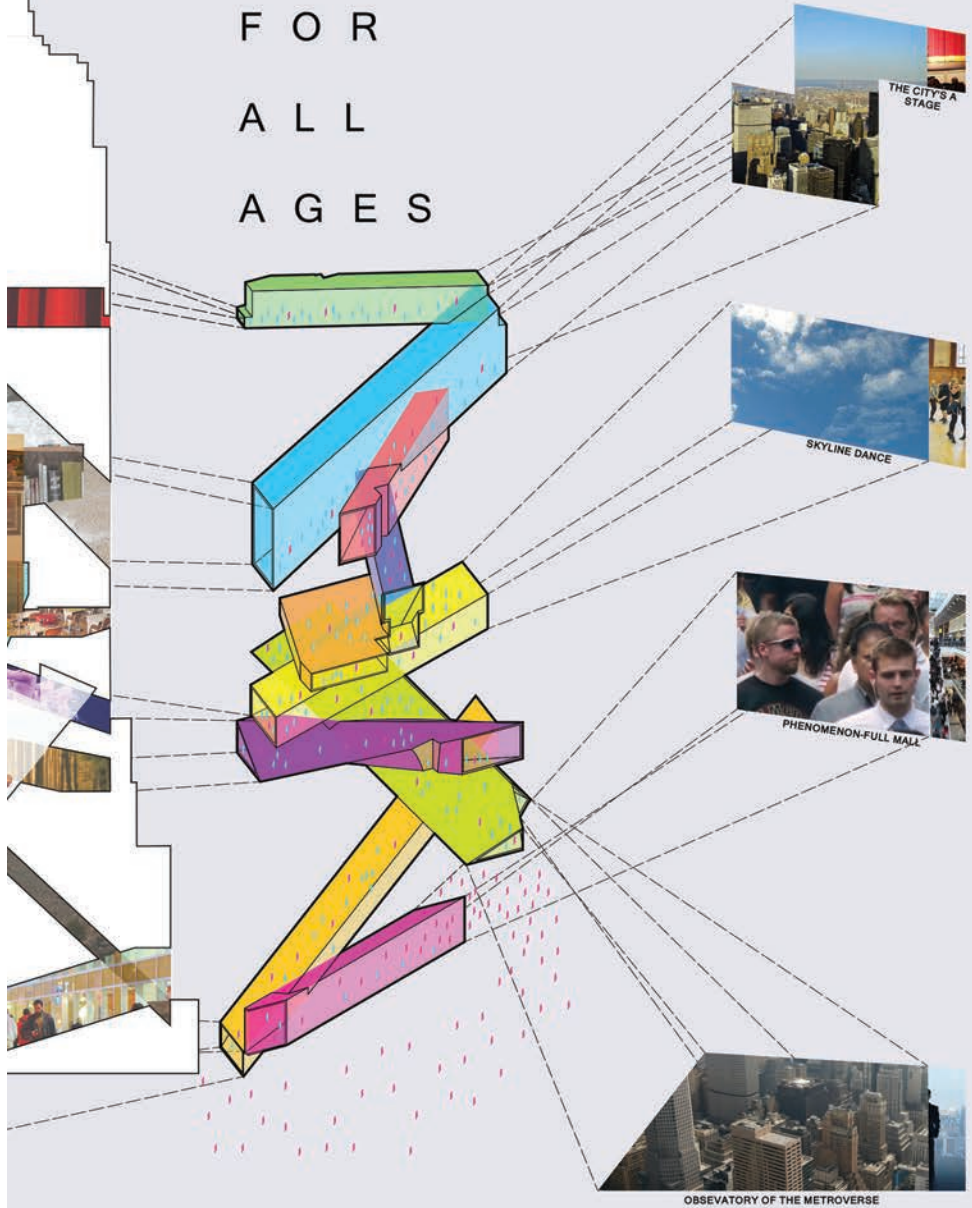
A FOREST FROM THE TREES



ON ROCKY SLOPES



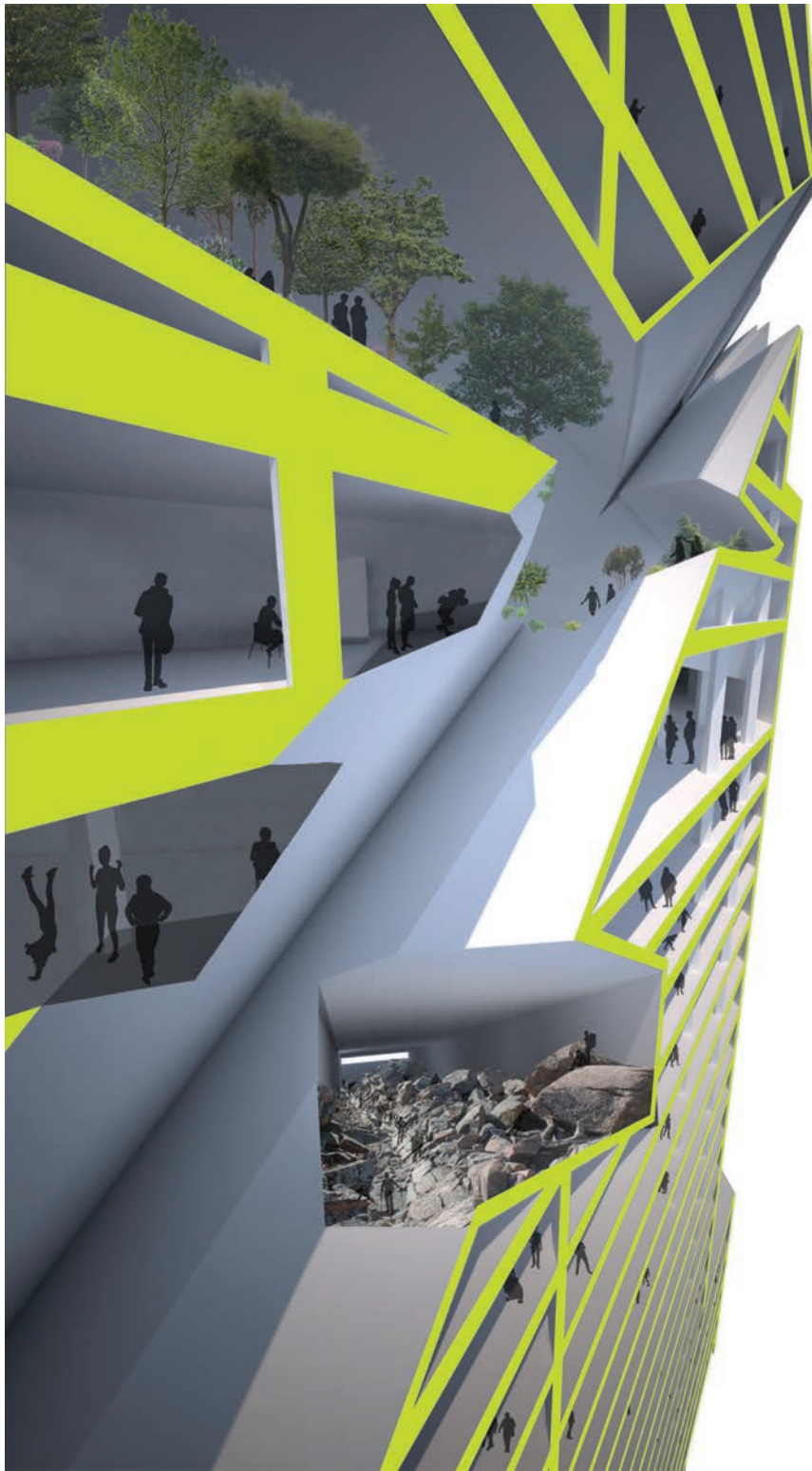
A  
S P E C T R U M  
F O R  
A L L  
A G E S

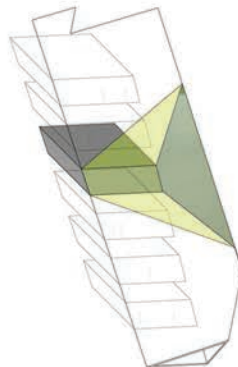
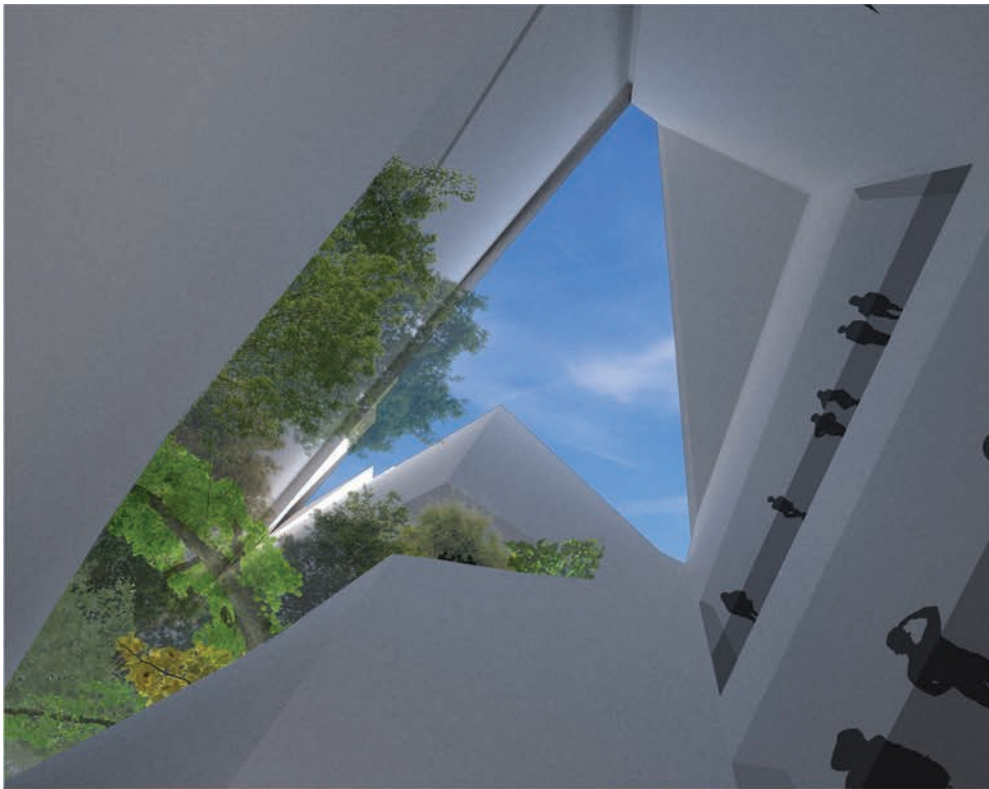




**SOCIAL CONNECTIONS**  
EVENTS AND  
RETAIL PULL  
PASSERBY'S INTO  
THE BUILDING TO  
INTERACT WITH  
RESIDENTS

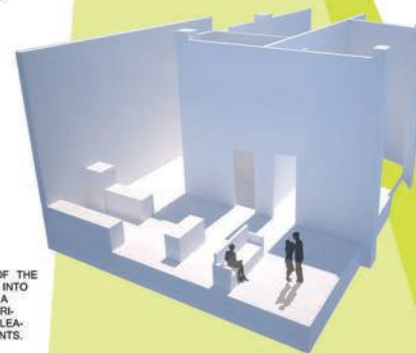






**MEDITATION**

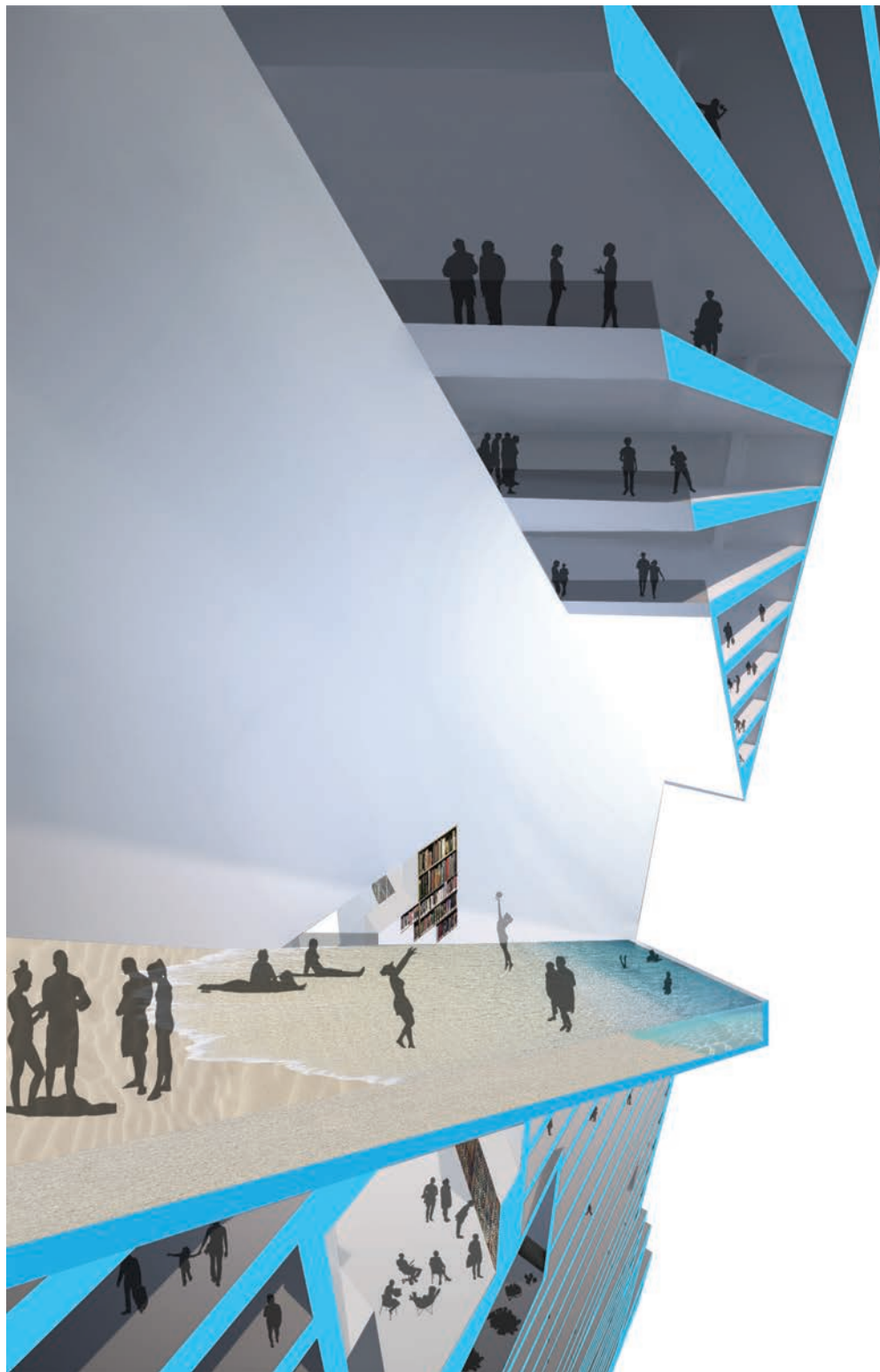
A SPACE THAT IS UNDISTURBED WITH MOMENTS OF EMBELLISHMENT FROM INTERSECTING VOIDS

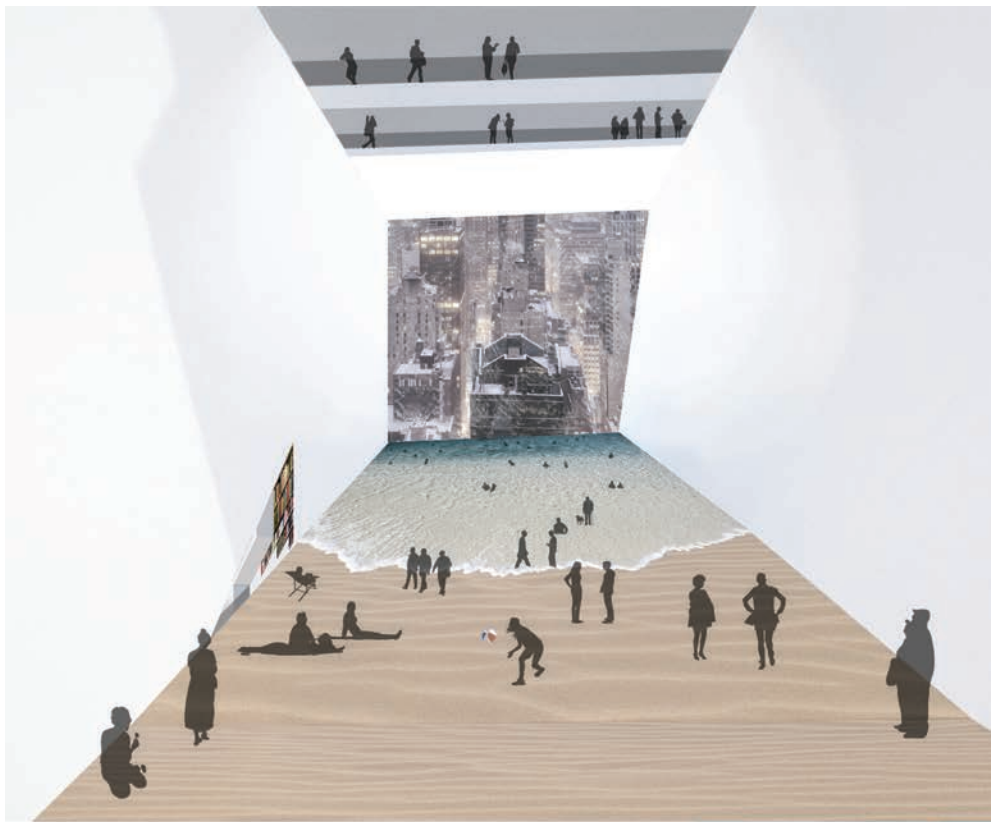


**GUILTY VIEWS**

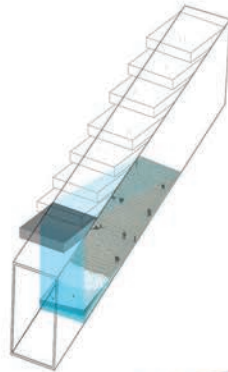
THE PRESENCE OF THE VOIDS CONTINUES INTO THE UNIT, GIVING A VOYEURISTIC EXPERIENCE: A GUILTY PLEASURE FOR RESIDENTS.







**BABY IT'S  
COLD OUTSIDE**  
SO NICE AND  
WARM — LOOK  
OUT THE  
WINDOW AT  
THAT STORM—  
A DAY ON THE  
BEACH



**BEACH DAY**  
THE UNIT CAN EXPERI-  
ENCE THE BEACH  
WITHOUT THE RISK OF  
SANDY SHORTS.

