

2012 MERIT

Seiji Anderson

LYCEUM

A traveling fellowship in Architecture



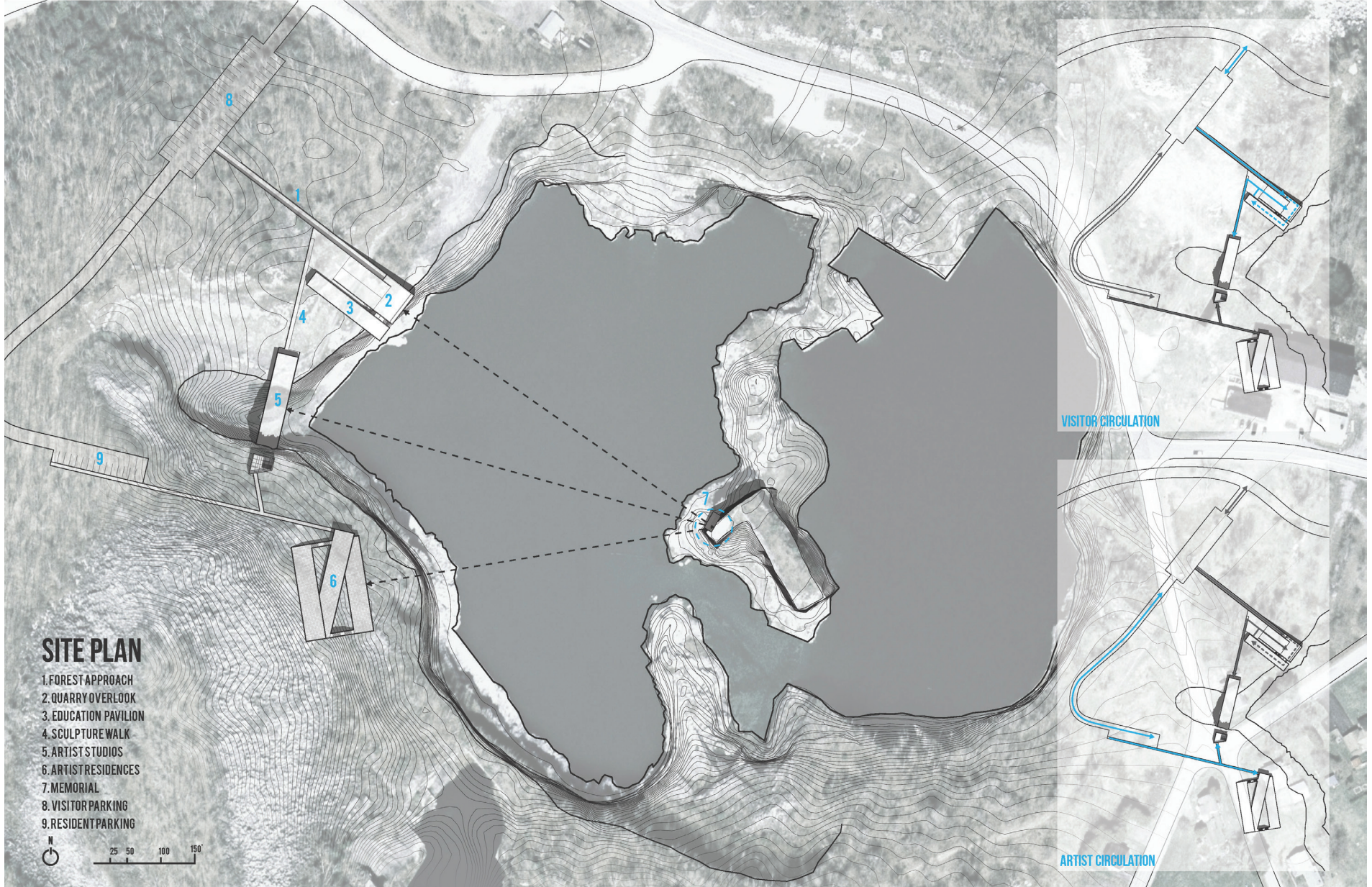
MEMORY & MUSE

MEMORY IS A MAJOR CONDUIT FOR INSPIRATION IN ART AND DESIGN. IT DEFINES OUR SELF CONCEPT AND DETERMINES MUCH OF OUR UNDERSTANDING OF WHAT HAPPENS TO US.

THIS PROPOSAL IS A SERIES OF ARCHITECTURAL ELEMENTS DESIGNED TO BOTH EVOKE AND CREATE MEMORY WITHIN A UNIQUE LANDSCAPE CONDITION—AN ABANDONED QUARRY FILLED WITH WATERS DEEP, DARK, AND FATHOMLESS AS THE HUMAN PSYCHE. EACH ELEMENT IS A MINIMAL VOLUME REACTING TO THE NATURAL LANDSCAPE OF THE SITE. BUILT USING CONCRETE WITH AGGREGATE RECLAIMED FROM THE QUARRY'S BY-PRODUCT, THE BUILDINGS BECAME PLATFORMS

FROM WHICH USERS CAN ABSORB THE SCENIC ASPECTS OF THE QUARRY, AS WELL AS PEER OVER THE EDGE INTO DEPTHS OF THEIR OWN EXPERIENCE. GUESTS ARE LED THROUGH THE FOREST, AND BROUGHT TO THE LOBBY OF THE EDUCATION CENTER, AND IMMEDIATELY CONFRONTED WITH A PANORAMA THAT SUSPENDS THEM OVER THE QUARRY WATERS WITH AN UNOBSTRUCTED VIEW OF THE SITE, MEMORIAL, AND THE MOUNTAINS BEYOND. THE ARTIST STUDIOS BRIDGE ACROSS AND SCALE UP THE WESTERN FRACTURE OF THE SITE, WHILE THE RESIDENTIAL UNITS ACT AS A SERIES OF INTERCONNECTED FLOORS TERRACED UP THE MOUNTAINSIDE.

AT THE CENTER OF THE SITE IS THE MEMORIAL, SERVING AS A REMINDER THAT THE QUARRY IS ULTIMATELY A SCAR UPON THE EARTH'S LANDSCAPE, FILLED IN BY WATER, AND BEAUTIFIED BY TIME. IN THE SAME WAY, MEMORIES THAT WERE INITIALLY WOUNDS ON THE SOUL BECOME THE QUARRIES FROM WHICH ARTISTIC EXPRESSION EMERGES. THE ARCHITECTURE BECOMES THE FRAMEWORK FOR THE EVOCATION, CREATION, AND EXPLORATION OF MEMORY THAT WILL SERVE AS INSPIRATION LONG AFTER THE ARTIST HAS DEPARTED.



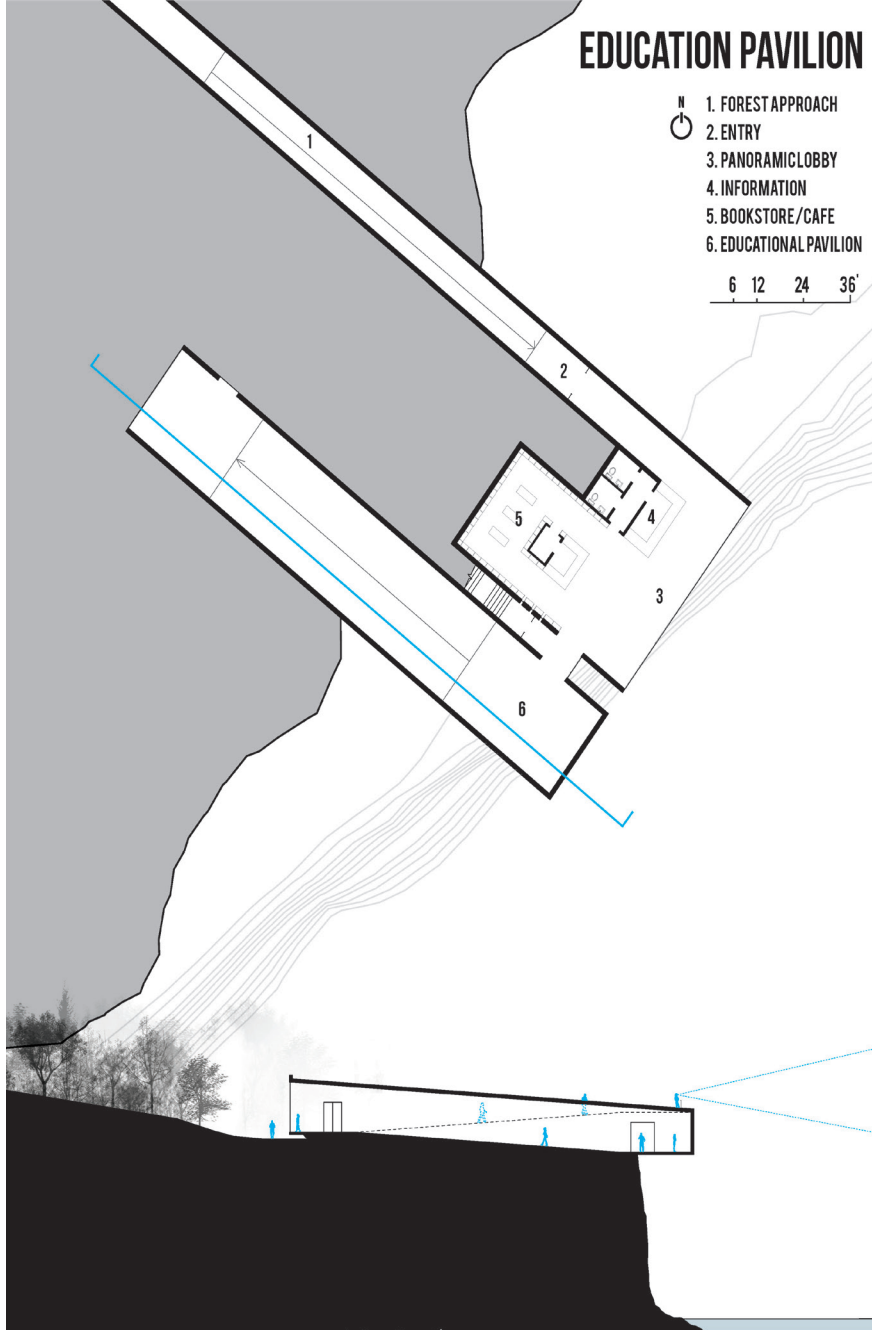
SITE PLAN

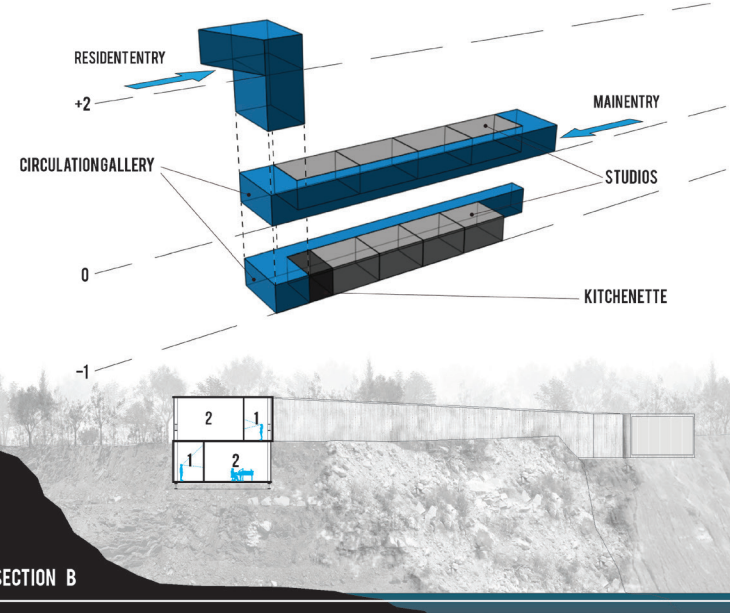
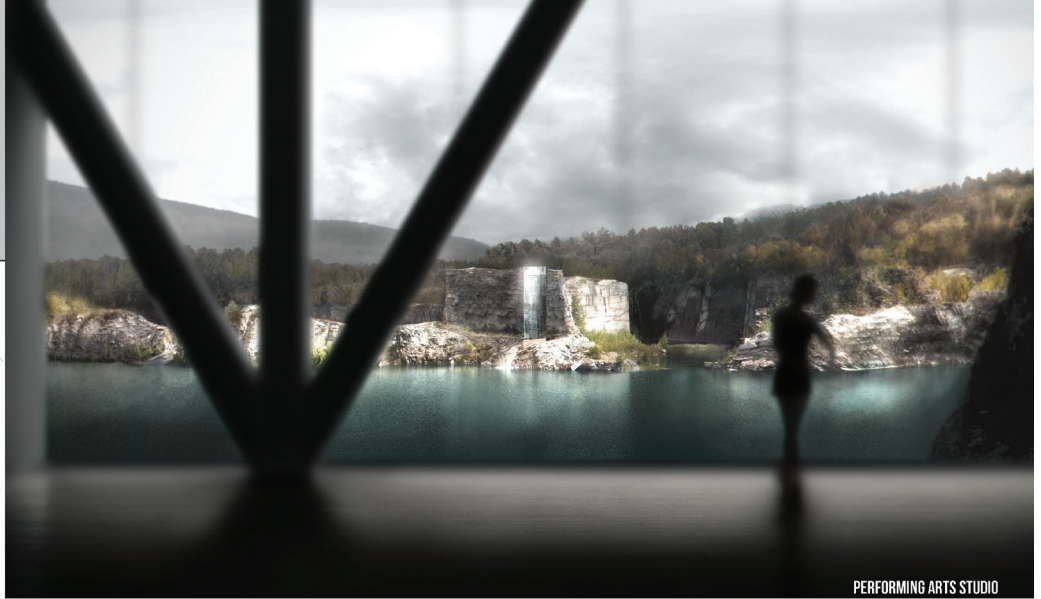
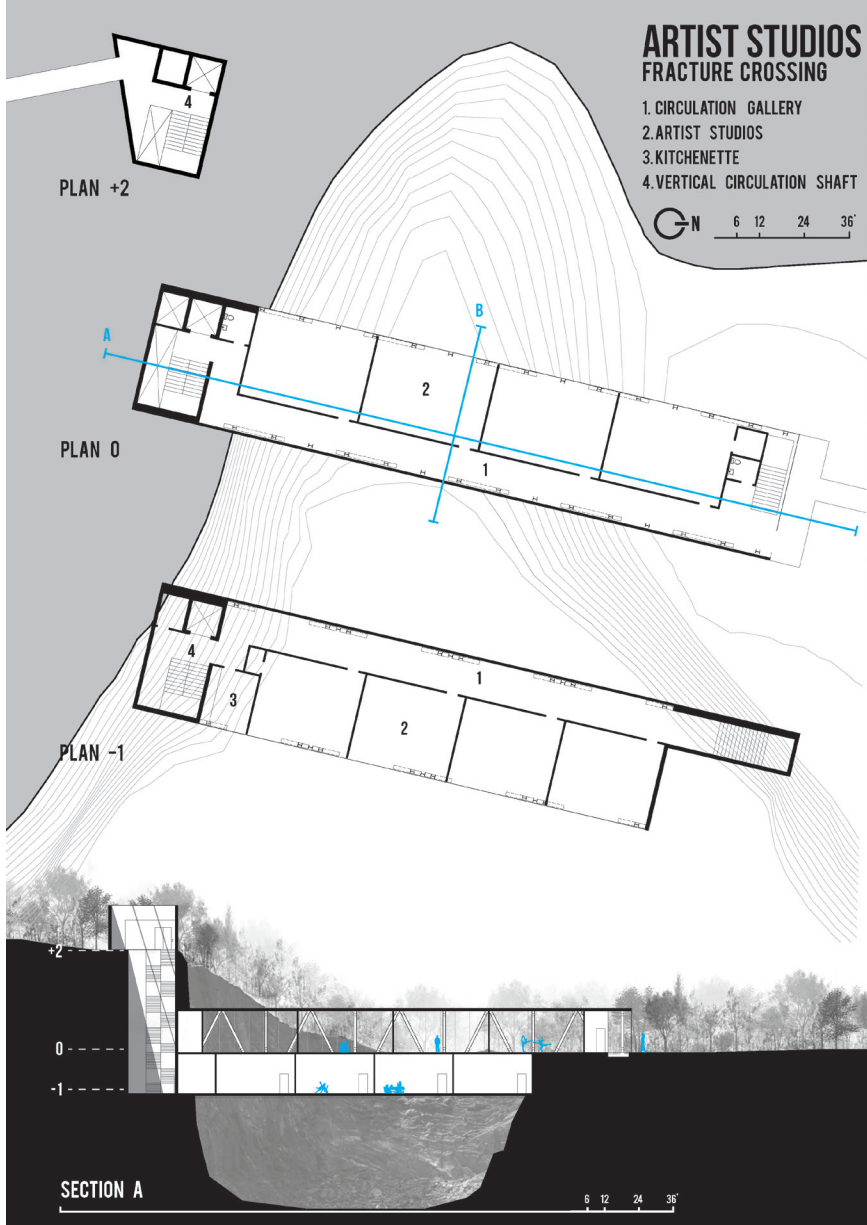
- 1. FOREST APPROACH
- 2. QUARRY OVERLOOK
- 3. EDUCATION PAVILION
- 4. SCULPTURE WALK
- 5. ARTIST STUDIOS
- 6. ARTIST RESIDENCES
- 7. MEMORIAL
- 8. VISITOR PARKING
- 9. RESIDENT PARKING

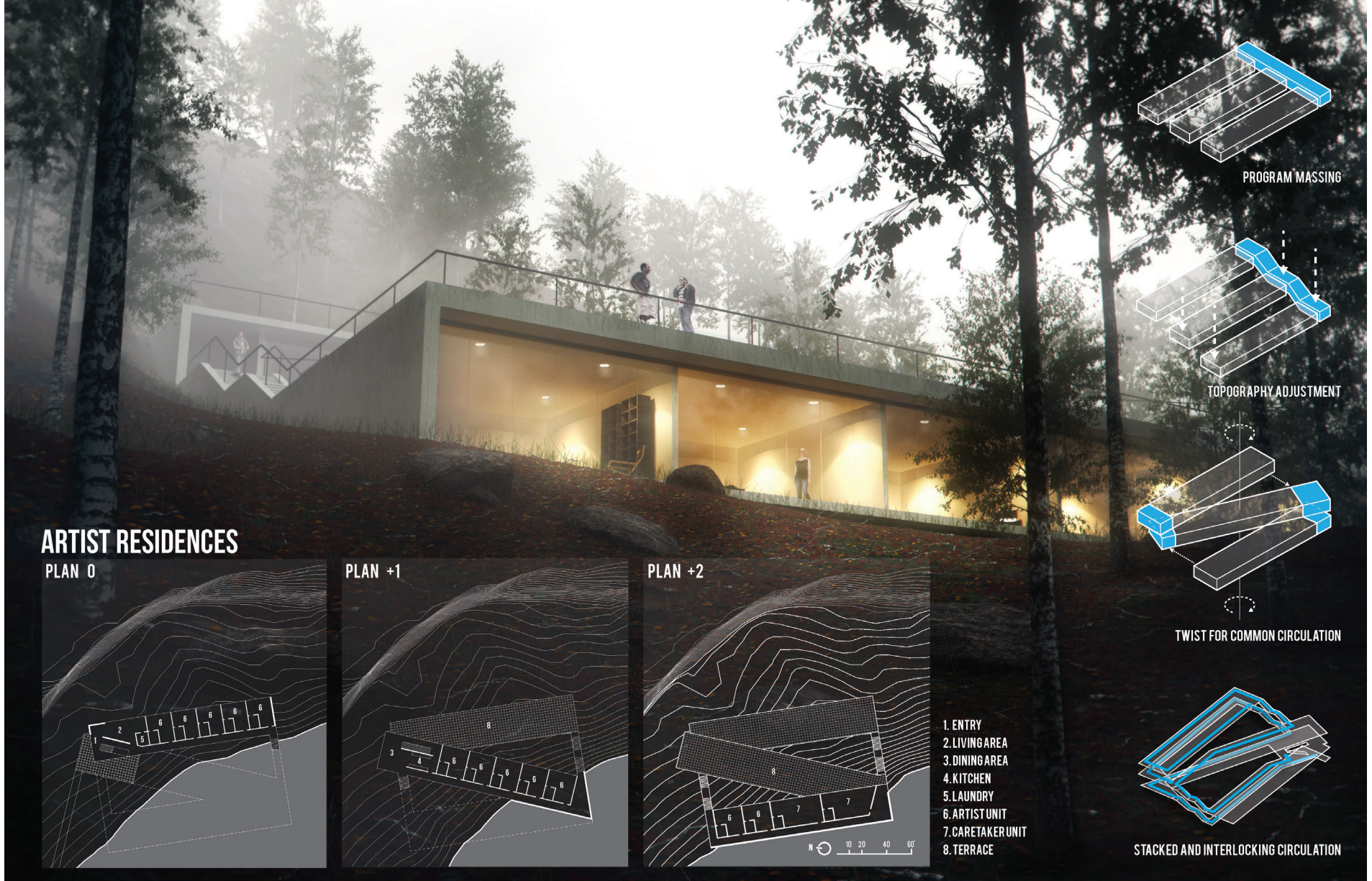


VISITOR CIRCULATION

ARTIST CIRCULATION





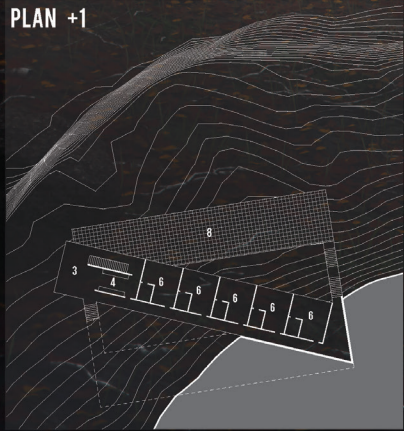


ARTIST RESIDENCES

PLAN 0



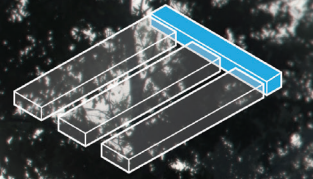
PLAN +1



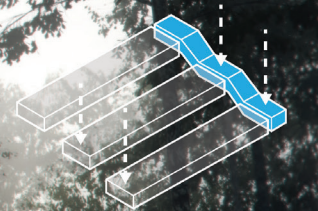
PLAN +2



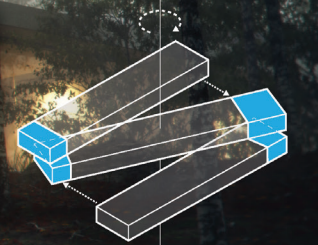
- 1. ENTRY
- 2. LIVING AREA
- 3. DINING AREA
- 4. KITCHEN
- 5. LAUNDRY
- 6. ARTIST UNIT
- 7. CARETAKER UNIT
- 8. TERRACE



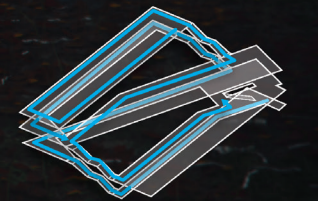
PROGRAM MASSING



TOPOGRAPHY ADJUSTMENT



TWIST FOR COMMON CIRCULATION



STACKED AND INTERLOCKING CIRCULATION

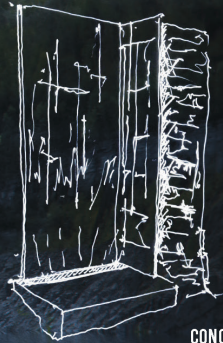


MEMORIAL

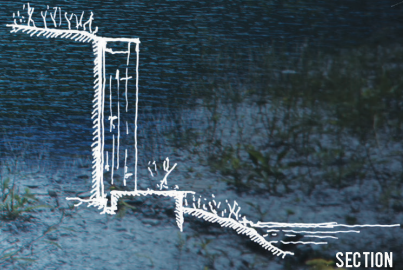
THE MEMORIAL SERVES AS A VISUAL ANCHOR IN THE QUARRY LINKING THE ARCHITECTURAL ELEMENTS. IT STANDS AS A SCULPTURAL VOID; ONE FINAL CUT INTO THE QUARRY ROCK TO HONOR THE VICTIMS OF THE QUARRY. CLAD IN WEATHERED METAL PANNELLING, THE MEMORIAL REFLECTS SUNLIGHT DURING THE DAY AND SHINES AS A BEACON OF LIGHT DURING THE NIGHT.



FLOORPLAN



CONCEPT SKETCH



SECTION