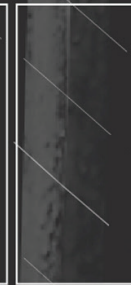
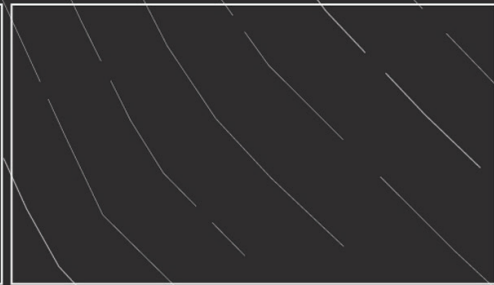
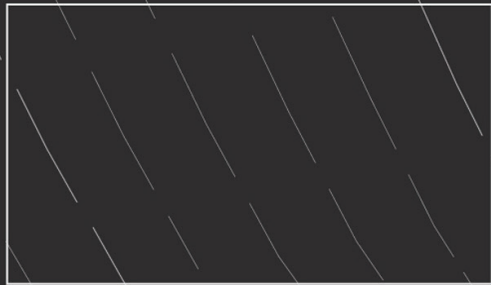
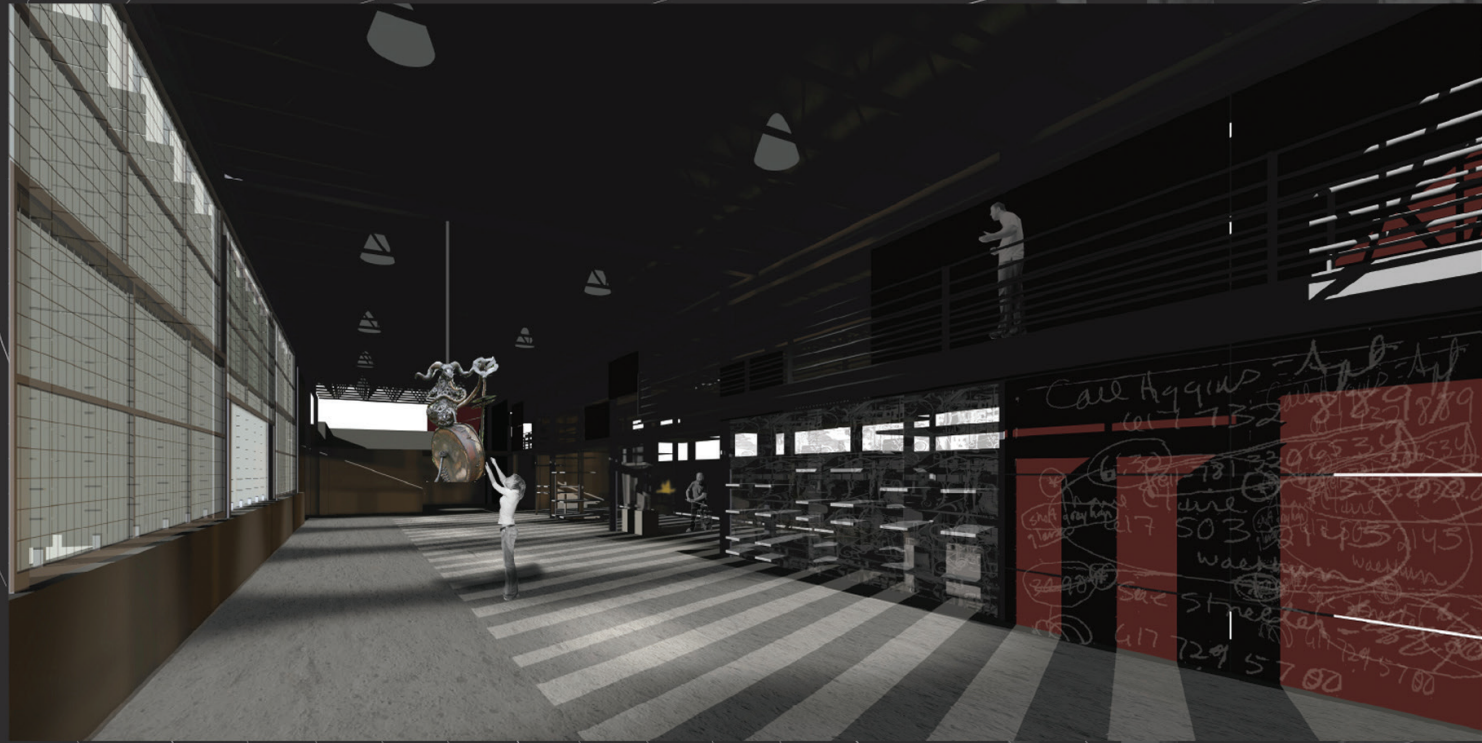


2009 MERIT

Eric Claus

LYCEUM

*A traveling fellowship in Architecture*



1

In the proposed blacksmithing studio, the central spine stands as a creative muse. It is the armature that combines metal scraps, tools, storage, finished pieces and unfinished pieces into a living entity capable of inspiring spontaneous moments of clarity in the creative process. The wall's texture and meaning shifts with time. The daily addition and subtraction of elements will be revealed in the ever-changing poetics of light. The annual cycles will bring a different kind of transformations with the ebb and flow of the seasons, experience and memory.

