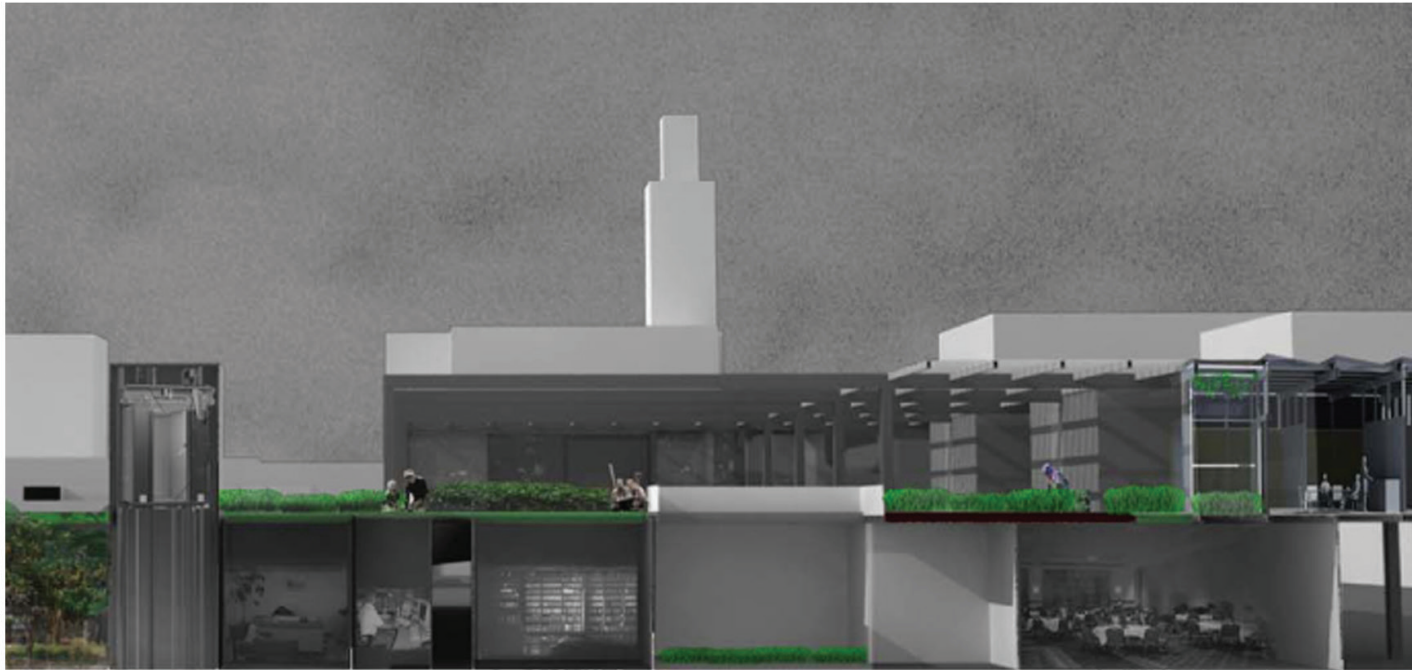


2008 THIRD PLACE

Walter Zesk

LYCEUM

A traveling fellowship in Architecture



Interior perspective



Unit plans

at 1/16"=1'0"

The units can adapt to a variety of programmatic requirements. By shifting the modular panel rooms can be reconfigured. By expanding and contracting within the larger structure the unit can change its footprint as families grow and fragment.

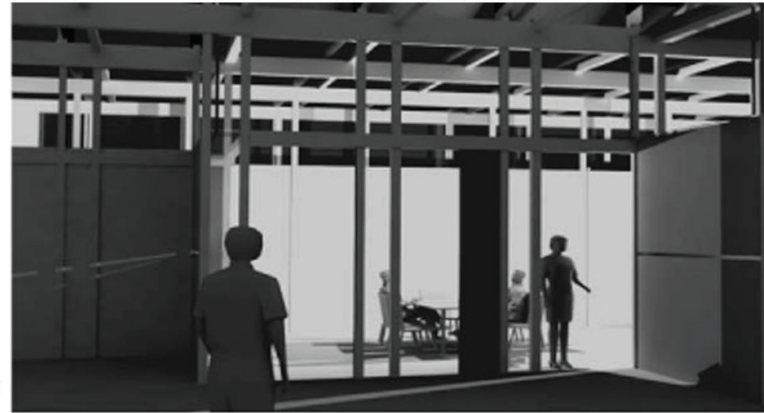
Here are three potential units:

Two single units joined by a common area at 800 sqft

Three bedroom, one bath at 1000 sqft

Four bedrooms two baths at 1500 sqft

0 Feet 10 20

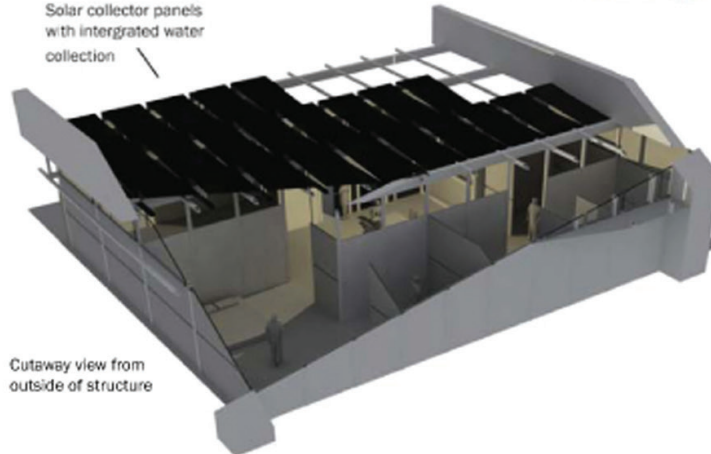


Evening view into a unit

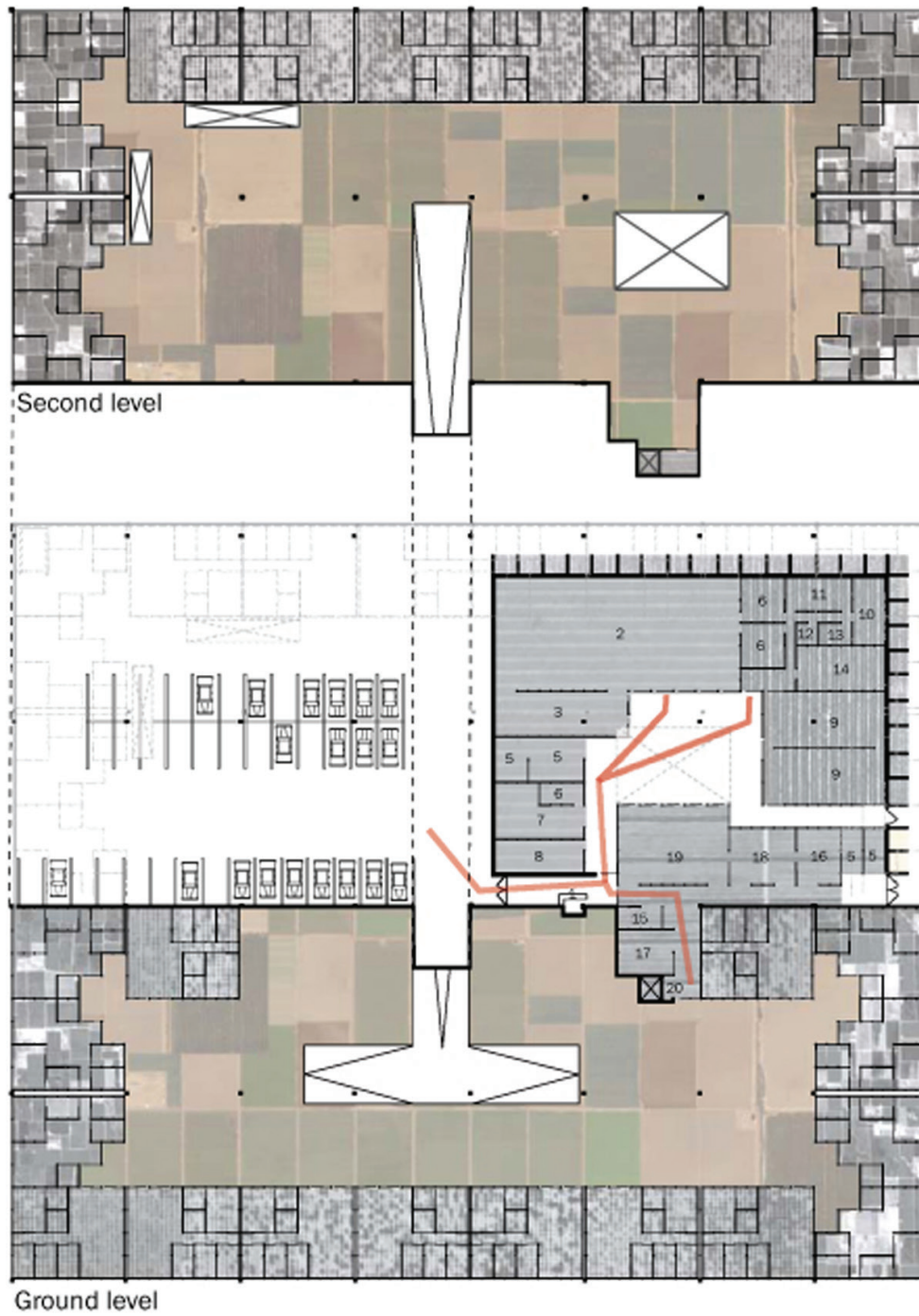


Unit section

Solar collector panels with integrated water collection



Cutaway view from outside of structure



m 11
 12
 13
 om 14
 15
 16
 17
 'g 18
 19
 20