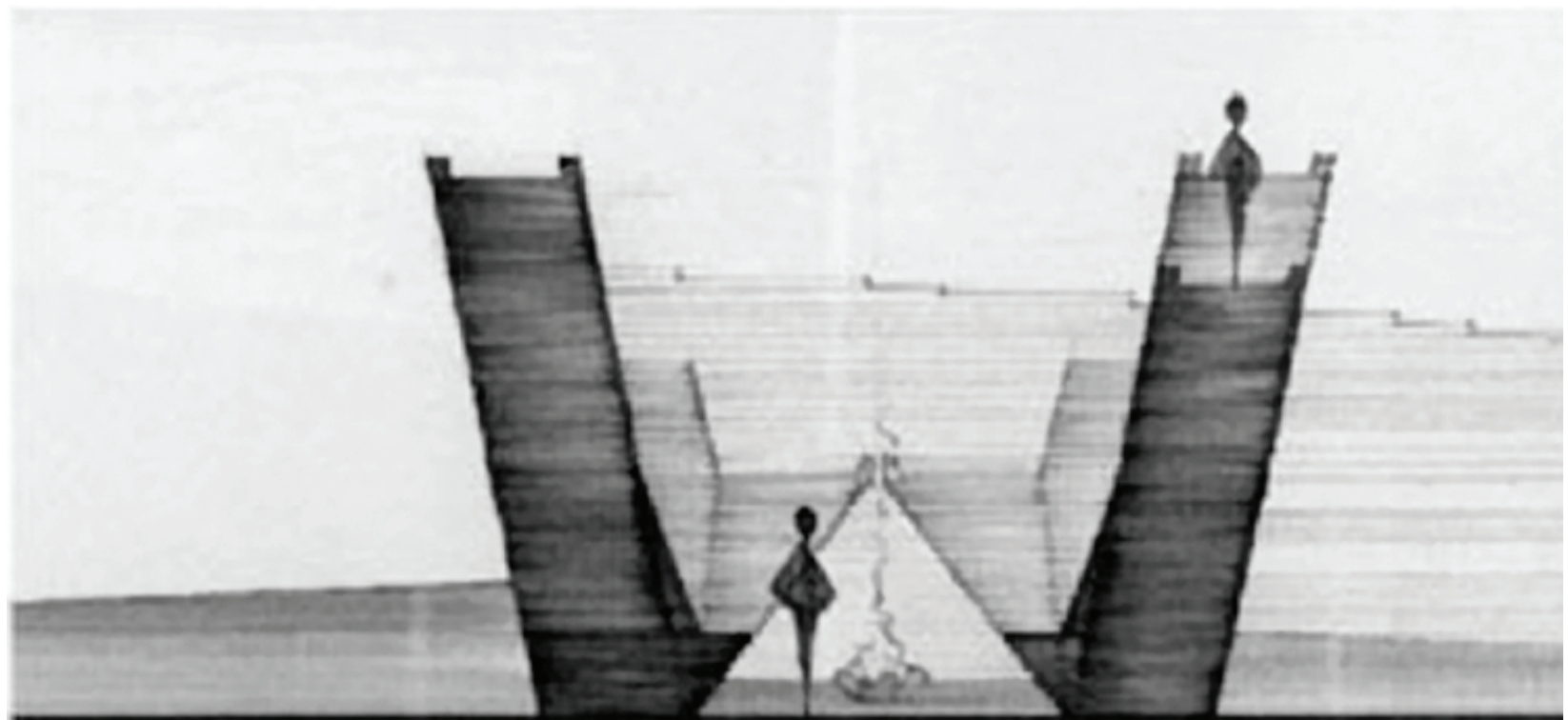
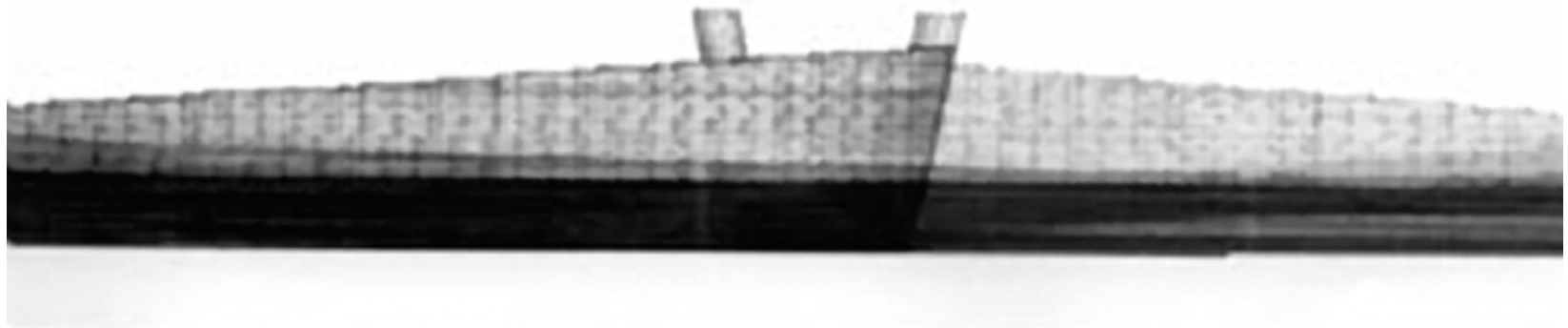


2002 SECOND PLACE

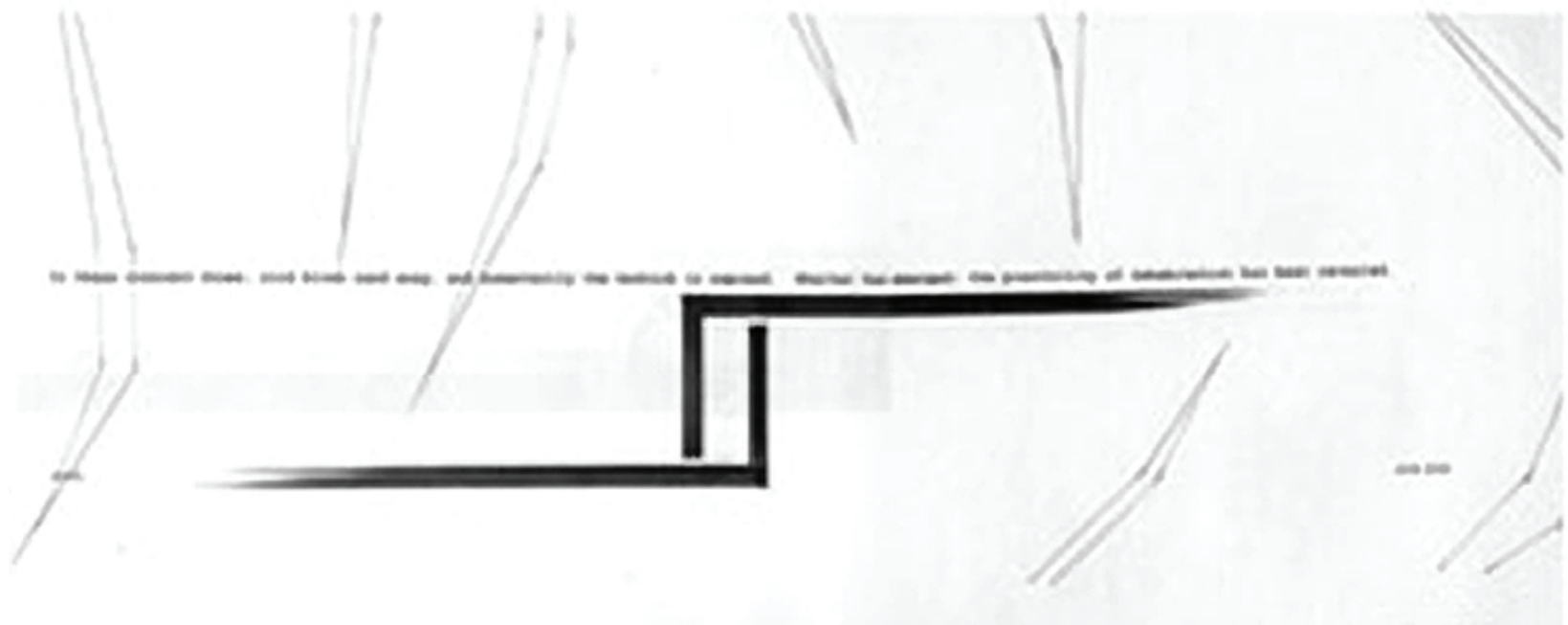
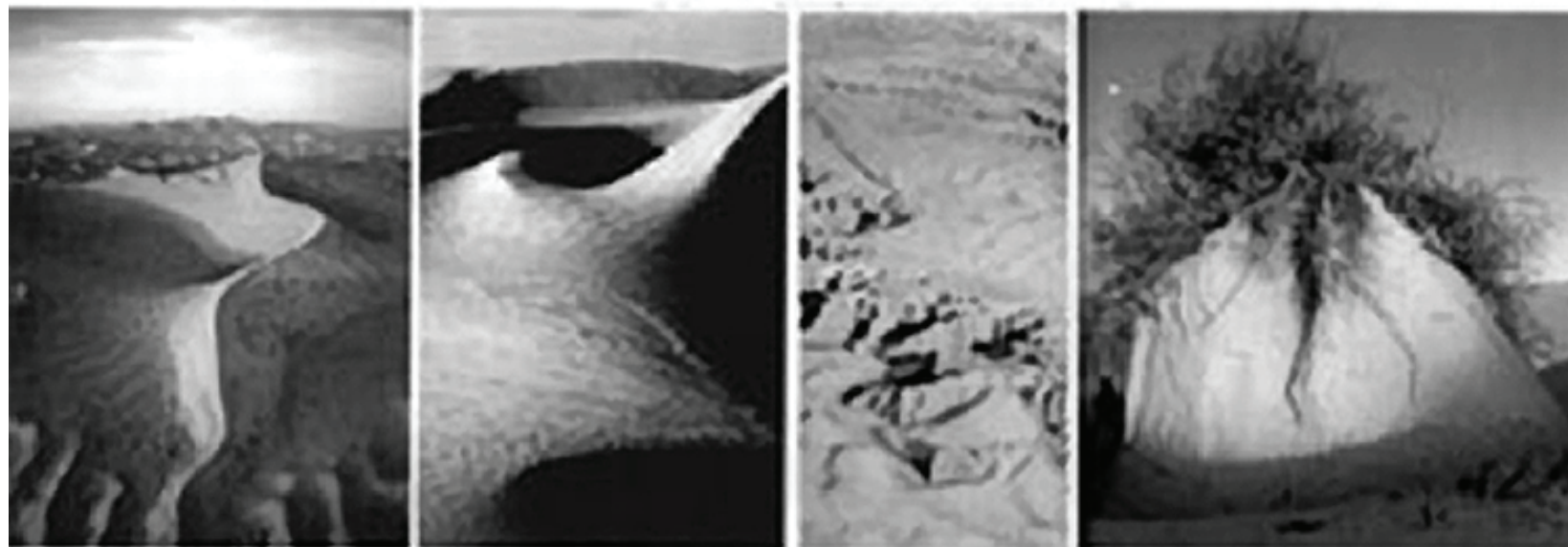
Siripon Beidler

LYCEUM

*A traveling fellowship in Architecture*



The sand dunes of Death Valley. A typical dune has a crest about 100 feet high. Sand dunes are usually formed by wind-blown sand accumulating against a low-lying barrier such as a ridge or rock in the desert. The dunes are usually about 100 feet high and 100 feet wide at the base. The dunes are usually about 100 feet high and 100 feet wide at the base.



To these dunes, sand blows and stays, and eventually the dunes are raised. The dunes are raised by the wind-blown sand that is blown against the dunes.