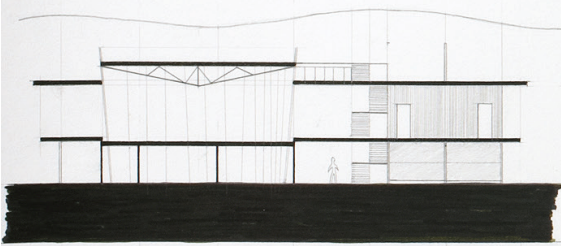
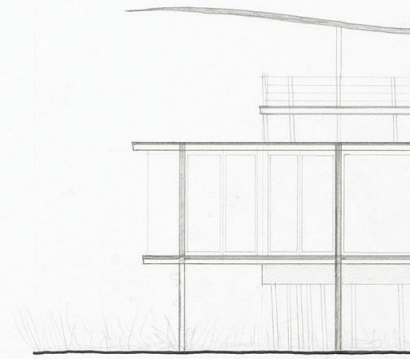
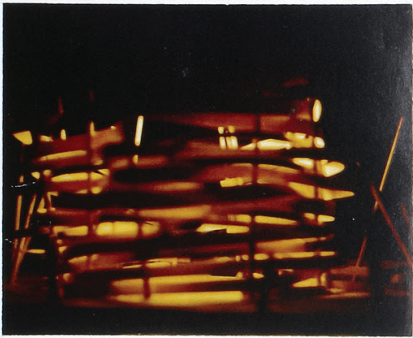
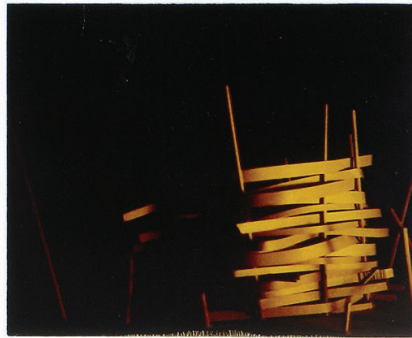


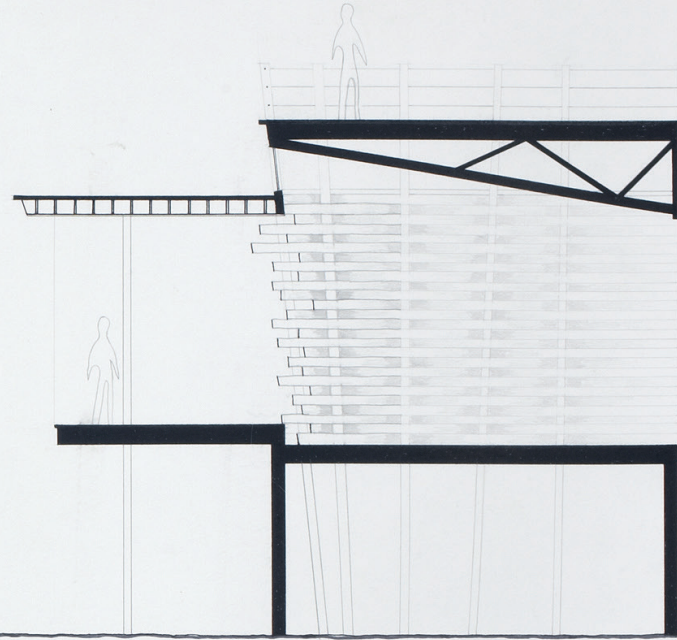
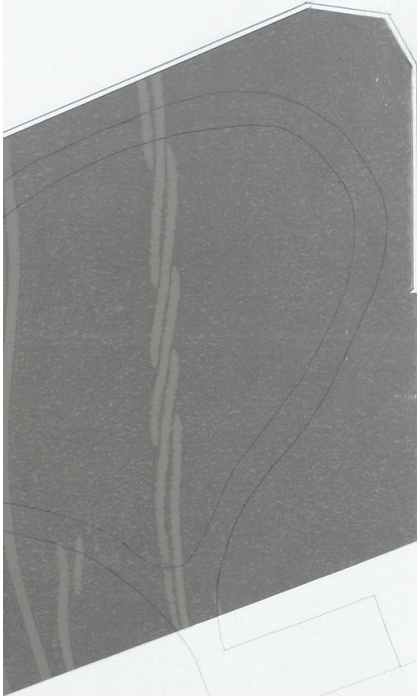
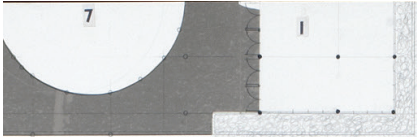
1997 MERIT

Jason Beal

LYCEUM

A traveling fellowship in Architecture





a home amongst the reeds.
 the weaving of structure on a landscape
 As a reed warbler weaves its nest
 into the reeds
 so should the building tie into the site.
 to bring together the ocean
 the sky
 the wetlands
 into a harmonious relationship of form
 perched above the landscape.
 free rotation of building elements
 dissolving the enclosure
 allowing the outside in and
 the inside out

- 1) Housing Unit
- 2) Multipurpose / Lecture
- 3) Exhibition / Gallery
- 4) Gift Shop
- 5) Coffee / Rest Area
- 6) Storage
- 7) Viewing Platform

