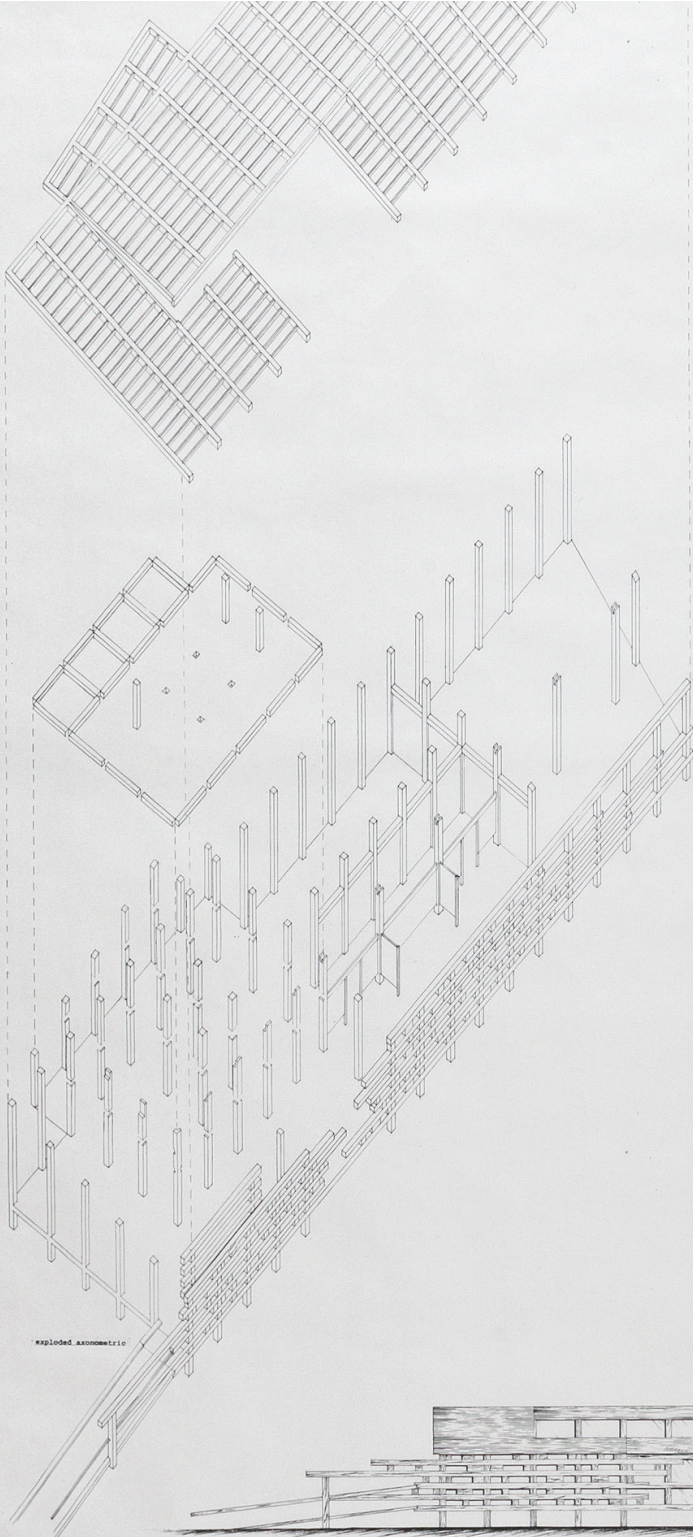


1997 CITATION

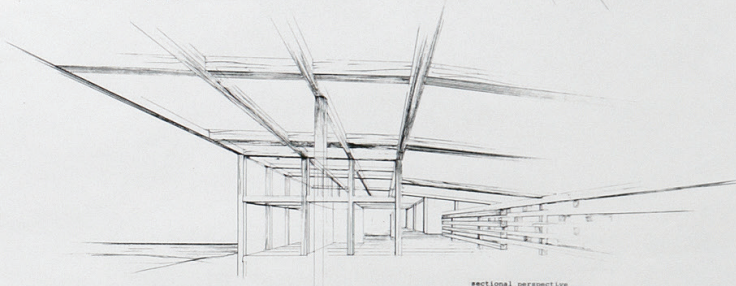
Jesse Tucker

LYCEUM

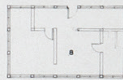
*A traveling fellowship in Architecture*



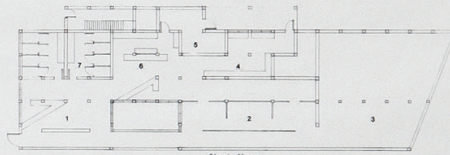
perspective of corridor



sectional perspective



second floor



first floor

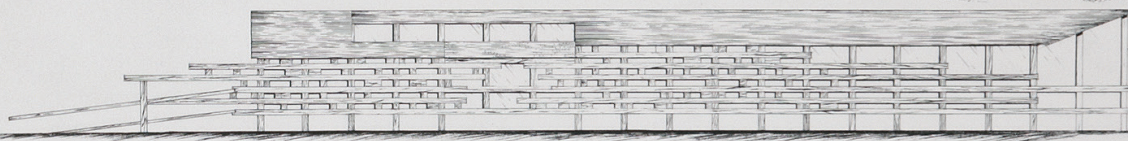
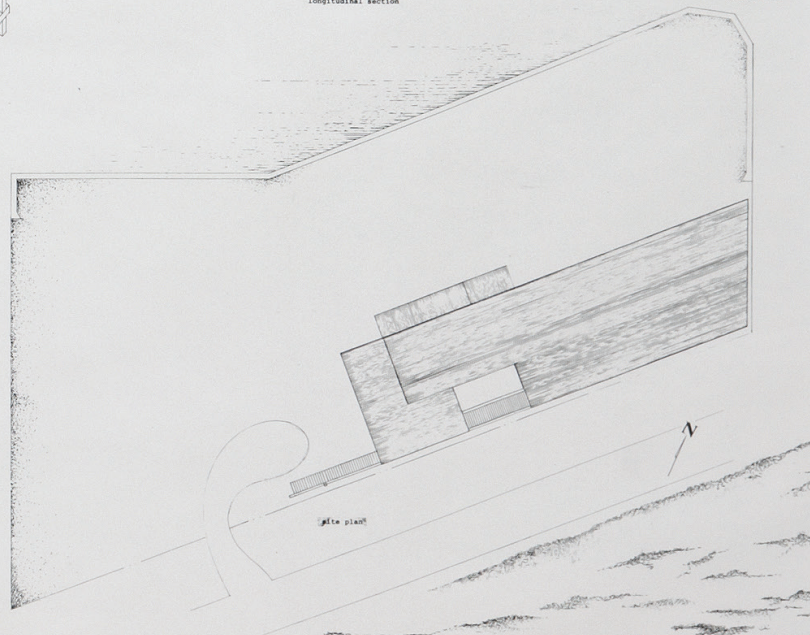
1. Vestibule
2. Gallery
3. Multipurpose Hall
4. Cafe
5. Storage
6. Gift Shop
7. Bathrooms
8. Dwelling
9. Corridor



longitudinal section



cross section



central facade

The architectural work mediates between its internal and external conditions. The sea is the greatest agency of rhythm. A birds song, grasshops in the wind, the planets in orbit are rhythmic. Movement, like sound, divides the passage of time into beats and organizes space into a body. Here the body is a public resource and serves as an educational tool. Its strength depends on a rhythmic structure, while the horizontal totems composing the facade dissolve and absorb the limitations of inside and out- if the mass is contained at its center it is exposed at its margin. The layered beams and cavities act as nesting areas for birds along the shore, attach themselves to the vessel, and anchor it to the site.