

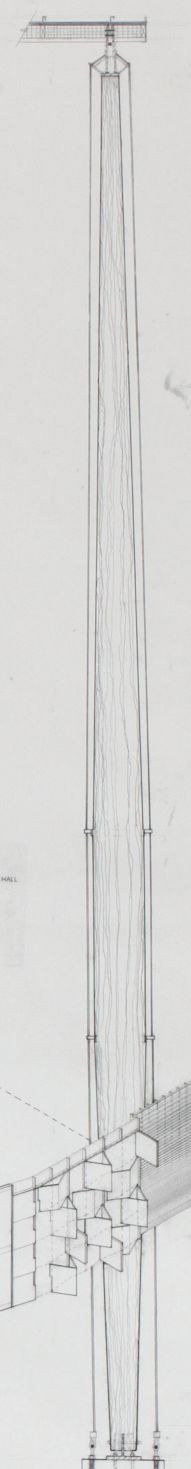
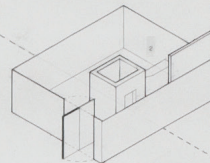
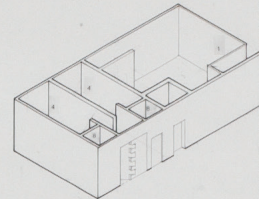
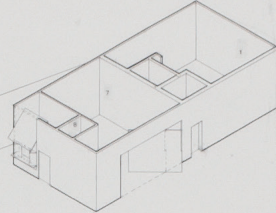
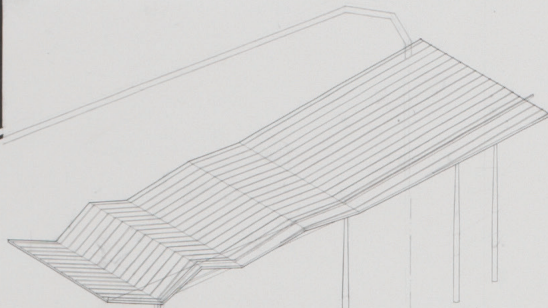
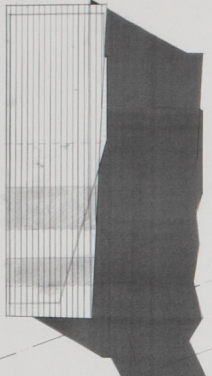
1997 THIRD PLACE

Brent Horez

LYCEUM

*A traveling fellowship in Architecture*

SCALE 1/8" = 1'-0"



The bird stands in a pensive state, its body is at rest and remains motionless. Its wings are folded and its body is propped. It stands there lightly on the ground, a subtle spherulic moment. The bird takes flight. With wings spread its image has transformed. It now floats weightlessly over the ground, its body was engaged to moments ago.

The enclosure negotiates the tenuous relationship between a highly fragile landscape and an intervening building. Its presence on the landscape fluctuates relative to the observer and to the site. This idea is articulated through the structure, site position and surface treatment. As the columnar supports dissolve so too does the building's envelope, heightening permeability. Through the employment of the unfolding plane, interior and exterior spatial relationships can change. It is in this instance that both building and environment become somewhat.

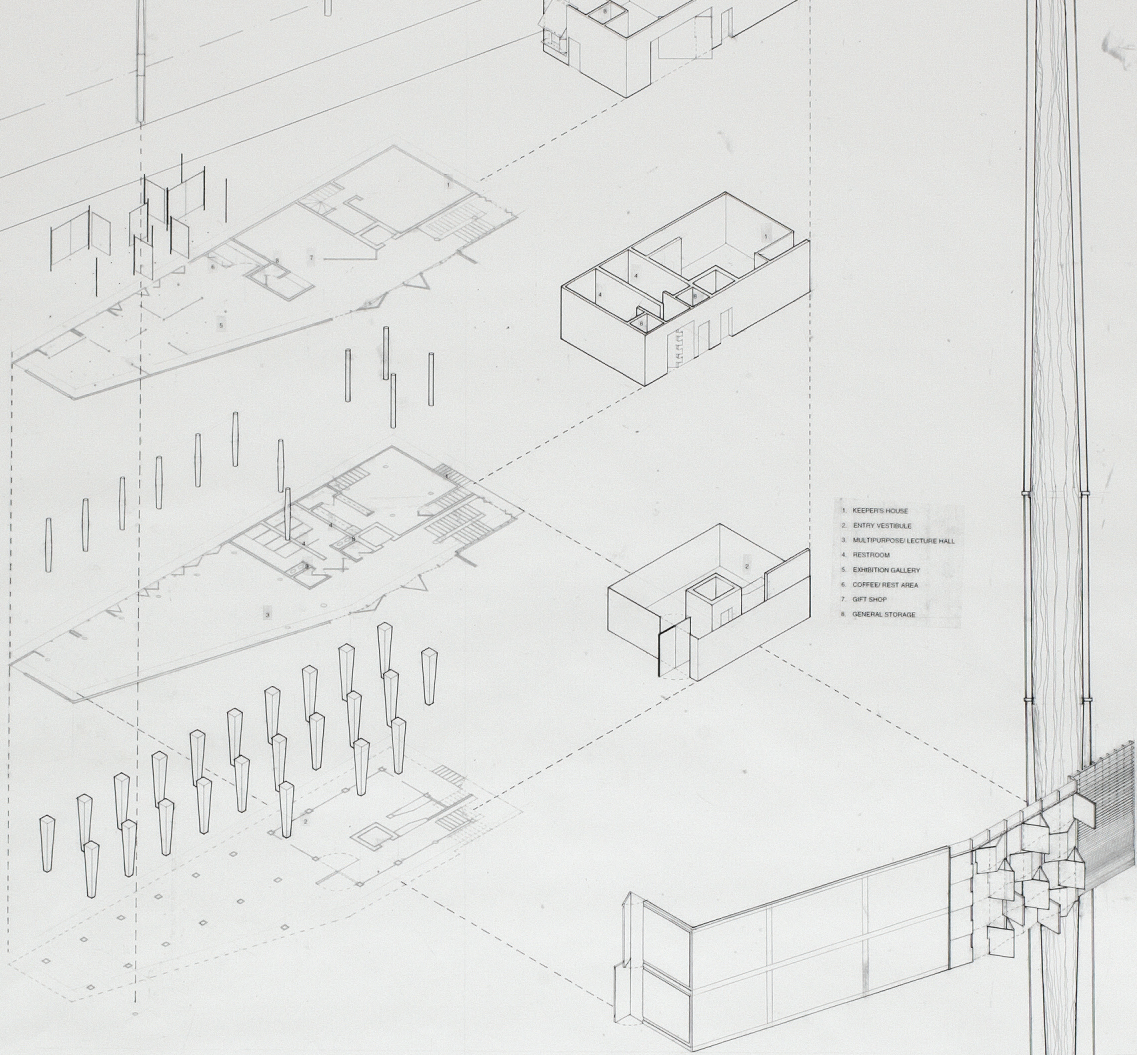
- 1. KEEPER'S HOUSE
- 2. ENTRY VESTIBULE
- 3. MULTIPURPOSE LECTURE HALL
- 4. RESTROOM
- 5. EXHIBITION GALLERY
- 6. COFFEE/REST AREA
- 7. GIFT SHOP
- 8. GENERAL STORAGE

# LYCEUM FELLOWSHIP

ROOF COLUMN DETAIL  
SCALE 3/4" = 1'-0"

The bird stands in a perverse state. Its body is at rest and remains motionless. Its wings are folded and its body is protected. It stands there lightly on the ground, a subtle ephemeral moment. The bird takes flight. With wings spread its image has transformed. It now floats weightlessly over the ground. Its body was engaged to moments ago.

The structure negotiates the tenuous relationship between a highly fragile landscape and an intervening building. Its presence on the landscape fluctuates relative to the observer and to the site. This idea is articulated through the structure, site position, and surface treatment. As the columnar supports dissolve so too does the building's envelope, heightening permeability. Through the employment of the unfolding planes, interior and exterior spatial relationships can change. It is in this instance that both building and environment become enmeshed.



# LYCEUM FELLOWSHIP

ROOF COLUMN DETAIL  
SCALE 3/4" = 1'-0"

