

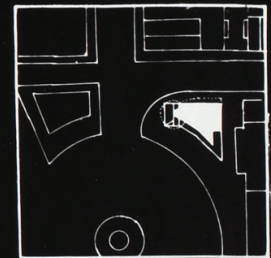
1992 MERIT

Pavel Panov

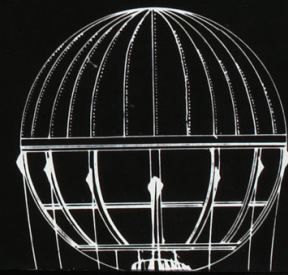
LYCEUM

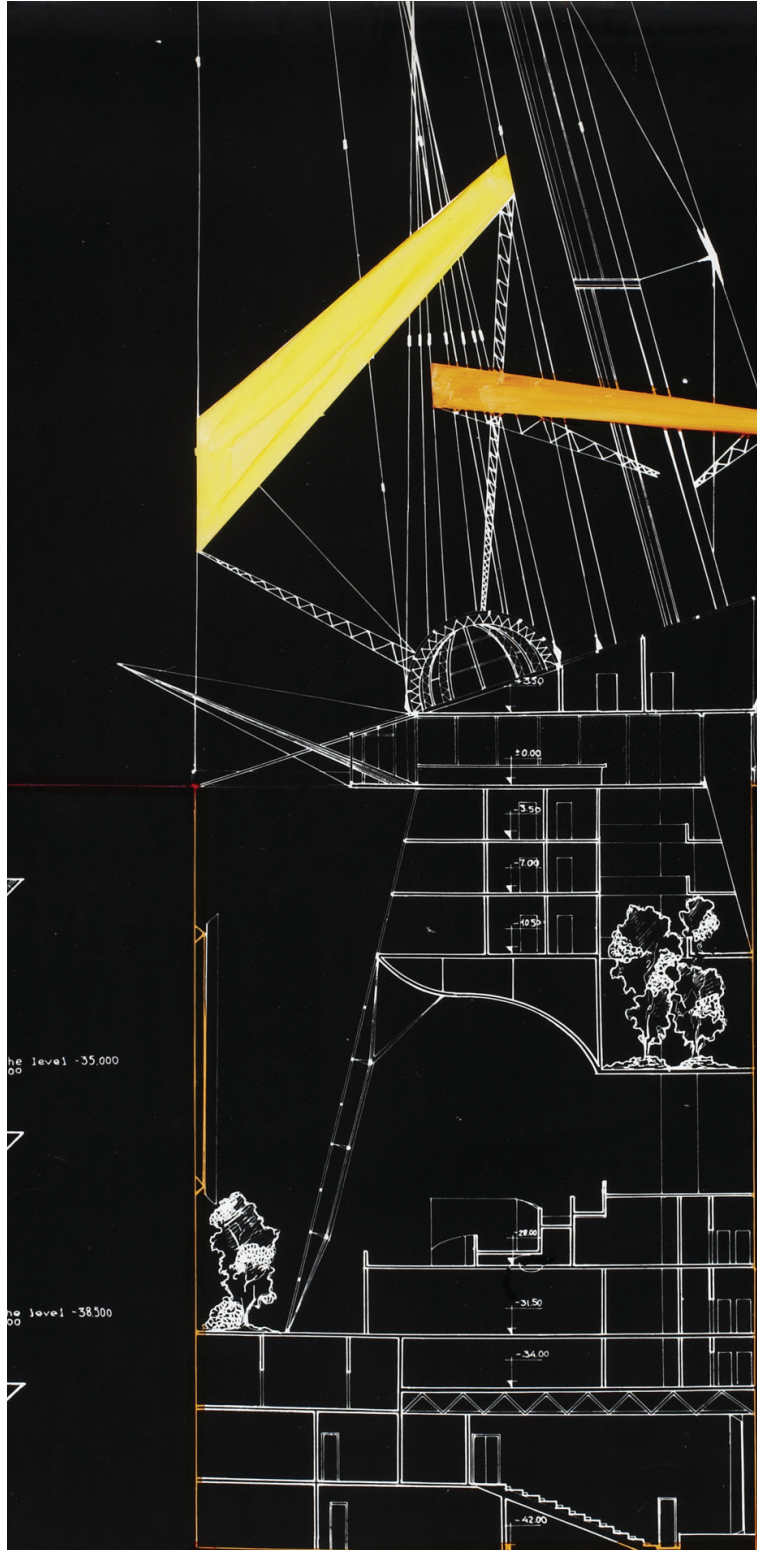
A traveling fellowship in Architecture

COLUMBUS INSTITUTE

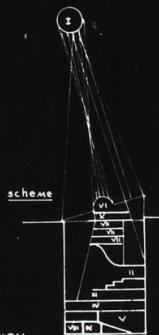


Situation plan



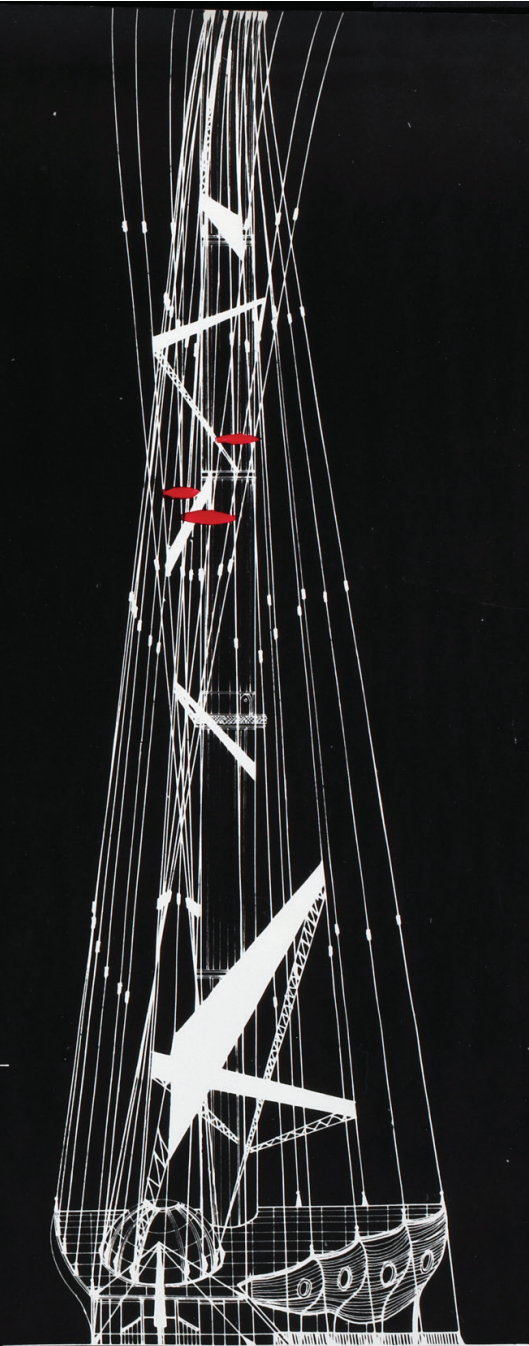


Facade combined
with section
scale 1:150



EXPLICATION.

- I. COLUMBUS ROOM
- II. SCULPTURE OF EXHIBITIONS
- III. MAPS AREA:
 - 1. EXHIBIT
 - 2. ARCHIVES
 - 3. DRAFTING / COMPUTERS
- IV. LIBRARY
 - 4. READING
 - 5. STACKS
 - 6. CARRELS
- V. LECTURE HALL
/ SEATING FOR 100/
DIRECTOR'S APARTMENT
- VI. APARTMENTS FOR VISITING SCHOLARS
- VII. SEMINAR ROOMS
- VIII. ADMINISTRATIVE OFFICES:
- IX.
 - 7. DIRECTOR
 - 8. PROGRAM DIRECTOR
 - 9. LIBRARIAN
 - 10. CARTOGRAPHER
 - 11. SECRETARIAL / STAFF
 - 12. BOARD ROOM
- X.
 - 13. MAIN ENTRANCE
 - 14. CLOCK ROOM
 - 15. ENTRANCE HALL
 - 16. COFFEE BAR
 - 17. INDOOR GARDEN
 - 18. ELEVATOR



Facade. Scale 1:200