

2022 MERIT

Nicolas Stetkevych

UNIVERSITY OF CINCINNATI

FACULTY ADVISOR - TERRY BOLING

LYCEUM

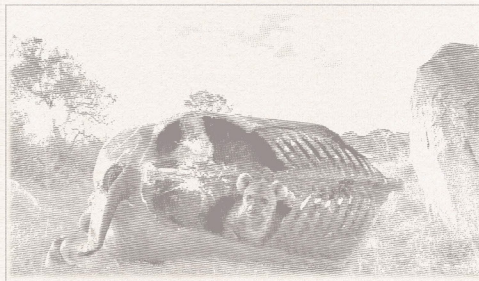
A traveling fellowship in Architecture

ARCHITECTURA
ÆMULUS
CORPUS NATURALE
IN
ANATOMIA

UNDERLAND

EX

LYCEUM



Lyceum is the structure

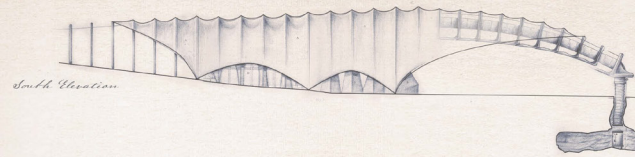
The body is the structure

SPELUNCA FRIESEHNAHNÆ

SAN ANTONIO,
TEXAS

MM. XXII

17-9915

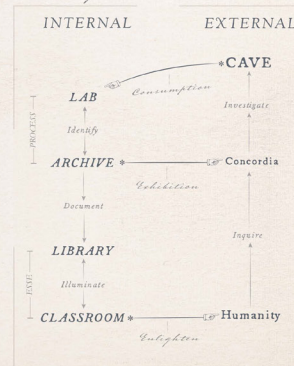


THE INTRODUCTION

ANATOMIA was developed with an acute understanding of biology. Skin and bones are resilient structures, comprising creatures for millions of years. Skin is a barrier that contains and protects internal organs from external interference. Bones are rigid elements designed to withstand forces, retain shape and functionality of the body, and enhance protection. Throughout time, humans have applied these strategies when designing structures. *Homo erectus* is believed to have built huts with animal skins and bones. Theoretically, they used the anatomy of the animals they butchered as archetypes for their constructions, effectively recreating the animal. Humans have continued to apply this paradigm. Mammoth-bone huts were discovered in Eastern Europe, believed to be 25,000 years old. Until the 20th century, some Lakota tribes erected tipis using a relatively similar composition.

This classical standard is the basis for ANATOMIA. In form and function, the design is corporeal. Much like bones, ANATOMIA's structure responds to forces by taking advantage of contemporary technologies; a method of 3D printed bio-cement comprised of sand and urease active calcium carbonate. These bones are designed to perform specific functions such as weight-bearing and protecting. Drawn over the bones is a skin-like canvas that consolidates the structure and protects the facility from natural elements. ANATOMIA is designed specifically for the extraction process. A pneumatic tube is used to transport finds from the cave, leading directly to the laboratory for processing. The material is then refined through the other programmatic spaces in a process most conducive for developing knowledge. By design, ANATOMIA acts as a functional piece and an evocative structure.

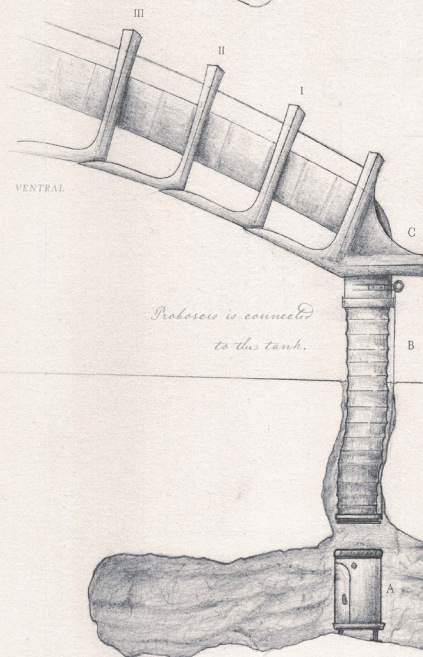
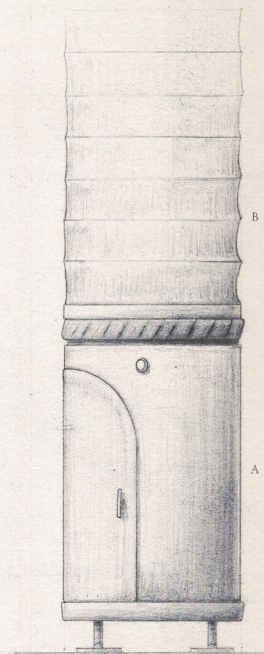
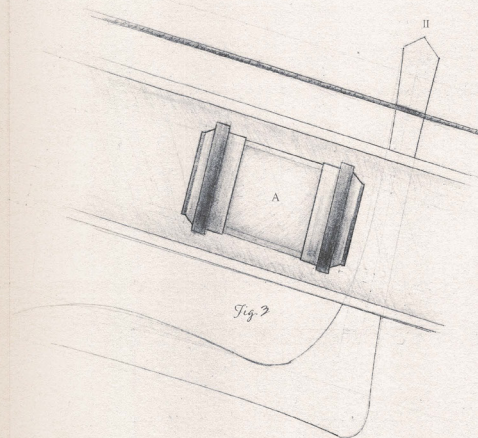
Process Diagram



INDEX

ORIS & MENTRIS Mouth and Jaw	TAB. 3
CERVIS Neck	TAB. 4
THORAX Chest Cavity	TAB. 5
ABDOMEN Core	TAB. 6
SACRUM Termination	TAB. 7
CORPUS Body	TAB. 8

*Capsule designed to
protect contents*



*The capsule containing
material is accepted by the
tank.*

Each vertebra is designed to transfer load from the Head back to the main structure.

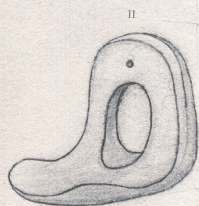


Fig. 2

Vertebra X is designed to meet the main structure at Rib 1.

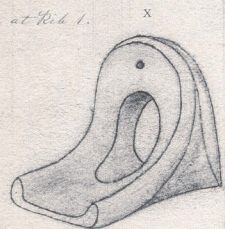


Fig. 2

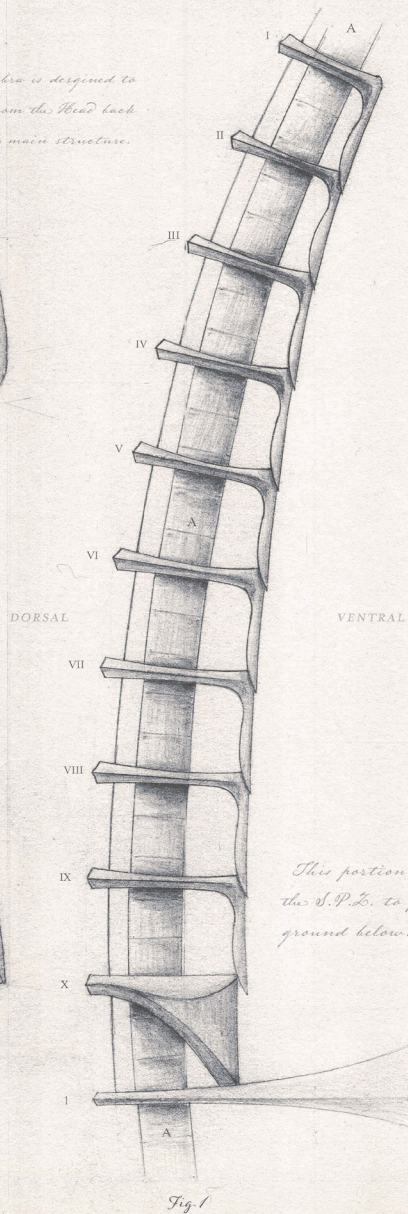


Fig. 1

*The skin stretched
over the ribs.*

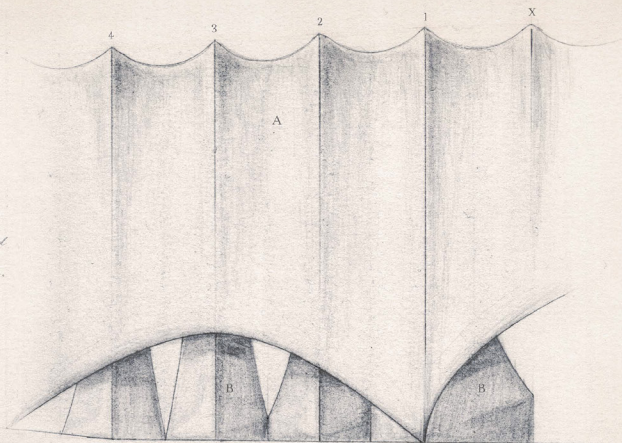
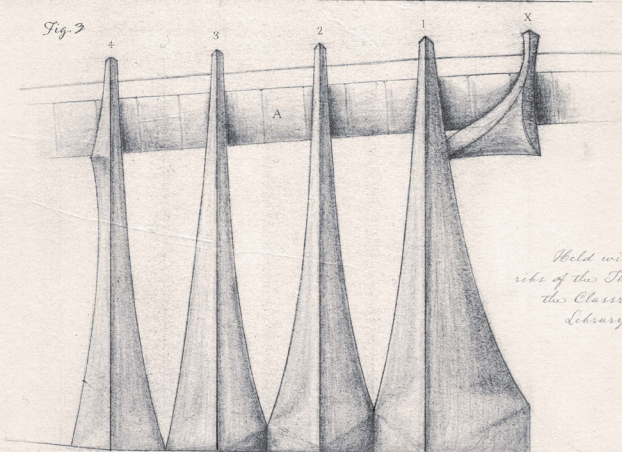


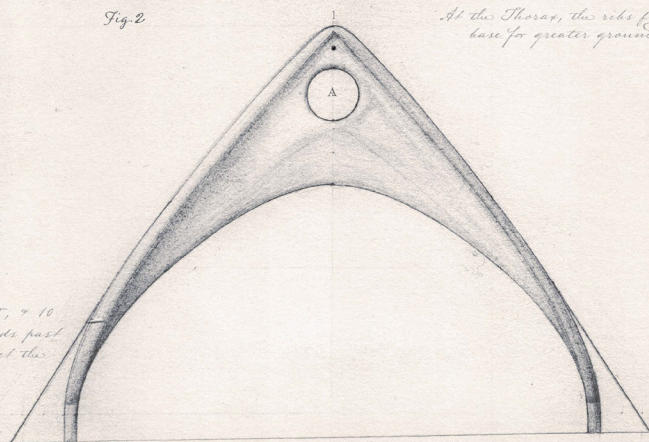
Fig. 2



*Held within the
ribs of the Thorax are
the Classroom and
Library spaces.*

Fig. 2

*At the Thorax, the ribs fuse at the
base for greater ground contact.*



*At Ribs 1, 5, & 10
the skin extends past
the ribs to meet the
ground.*

Fig. 1

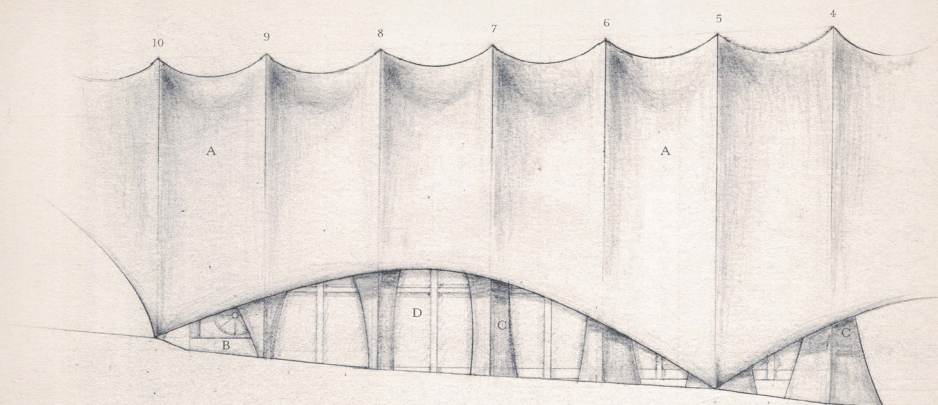


Fig. 3

*At the Abdomen, the ribs fuse
toward the apex for protection.*

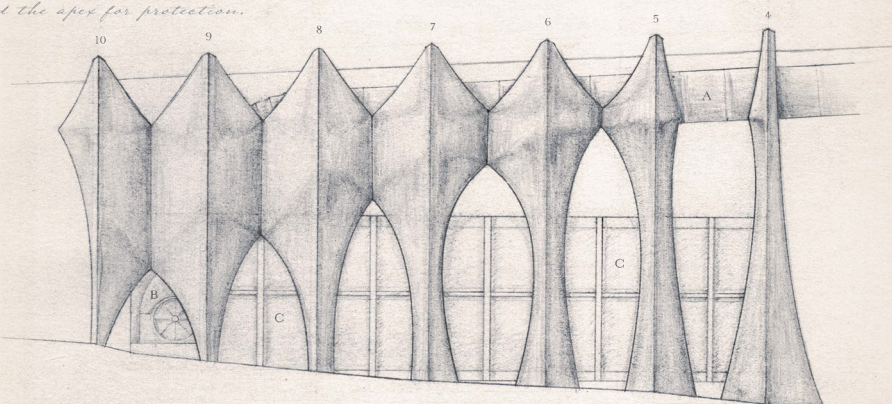


Fig. 2

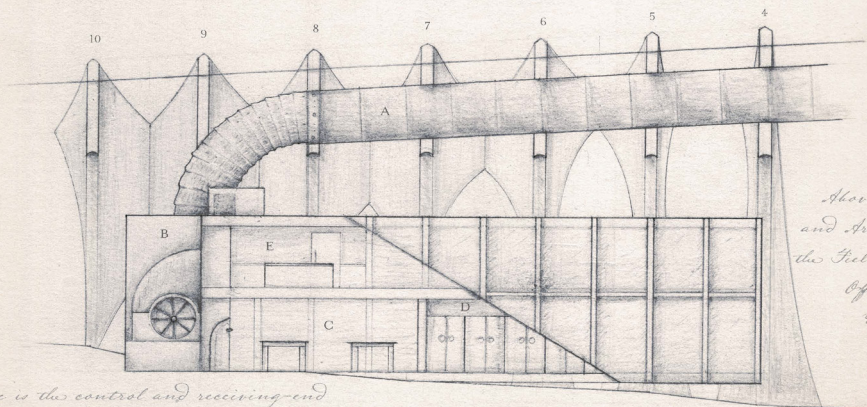
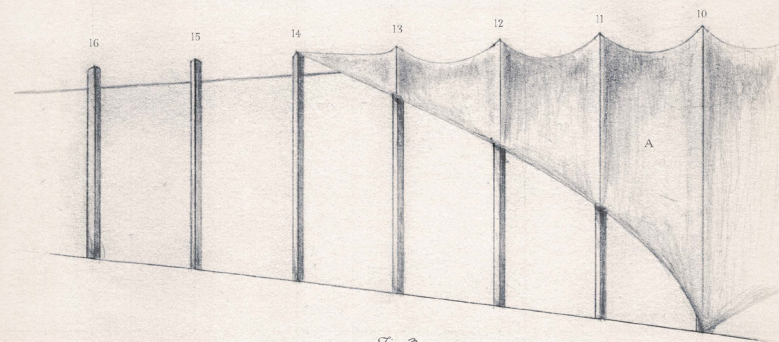


Fig. 1

*Here is the control and receiving-end
of the pneumatic tube.*

*Above the Lab
and Archive are
the Field House,
Offices, and
Utilities.*



The cable extends to meet the ground beyond the structure.

Fig. 1

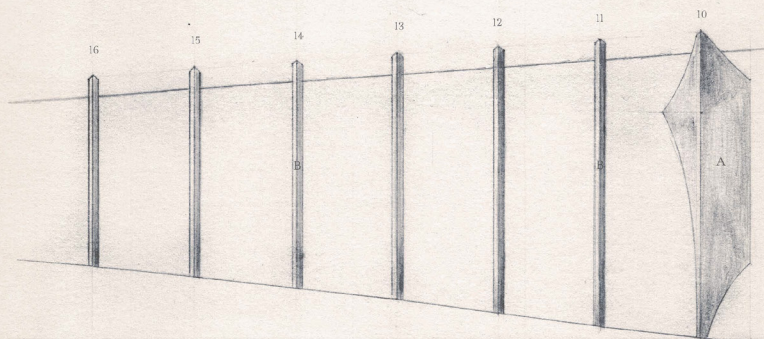


Fig. 2

The termination of the body; this portion supports the tensile cable for the neck.

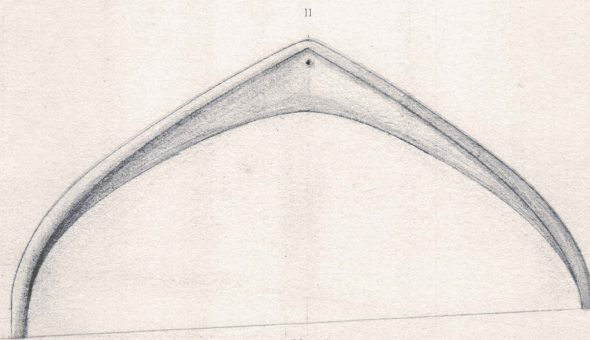


Fig. 3

*Cris, Mentis, and Cervis are
the portion of the structure
that extend over the S.P.L.*

*Rescarhers can venture to
the cave through the Thorax.*

*Entry points into the
structure are at the openings
of the Abdomen and the
Sacrum; between the ribs or
through them.*

ORIS
&
MENTIS

CERVICIS

THORAX

ABDOMEN

SACRUM

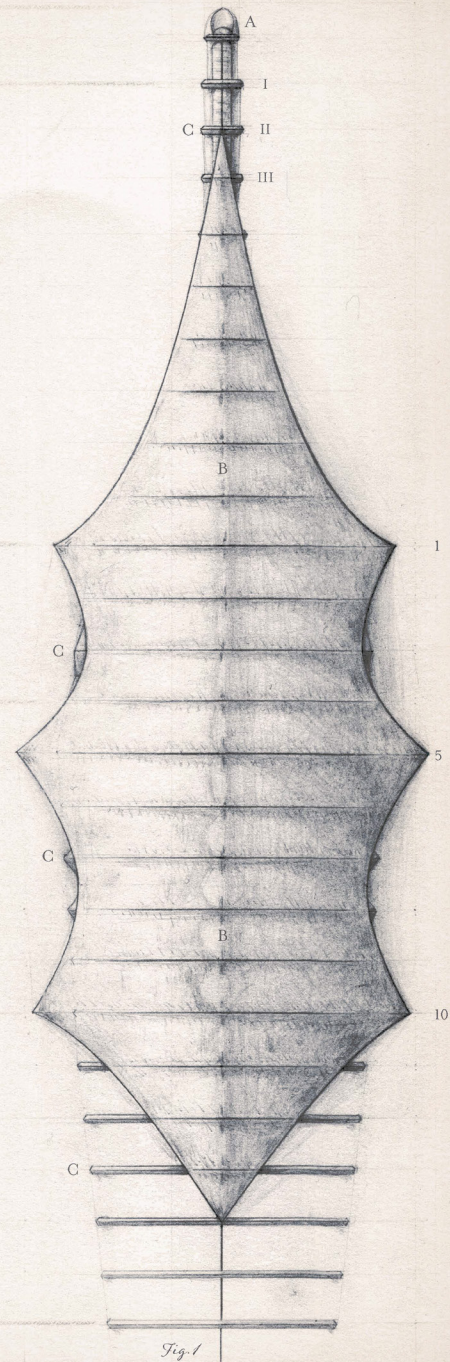


Fig. 1