

2022 THIRD PRIZE

Isabel Vineyard

RENSSELAER POLYTECHNIC INSTITUTE

FACULTY ADVISOR - RHETT RUSSO

LYCEUM

A traveling fellowship in Architecture

LF-9860



Approaching from Canyon Golf Road, archaeologists and visitors will observe a series of seemingly standard contemporary barn structures reminiscent of the vernacular architecture of the area. As they pass through the buildings and site, they will find that the surfaces of the buildings begin to undulate over their frame and form a veiled threshold between modern time and the geology of the site. The negative space between the draped surfaces and the building's skeleton create necessary shade to protect from the Texas sun, and form several democratized spaces for scientists to coalesce in an interpretation of 'the porch'; a typology that has existed in the San Antonio area for hundreds of years. They also act as exterior circulation paths that direct visitors and archaeologists from Canyon Golf Road to Friesenhahn Cave.

STRUCTURE

[skeleton]

DRAPE

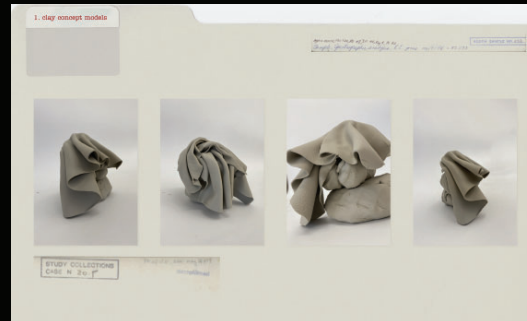
[cloak]

CONJUGATE

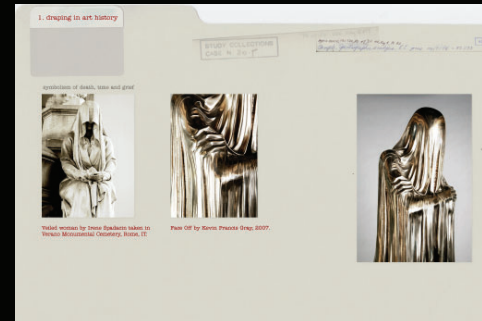
[skeleton] + [cloak]



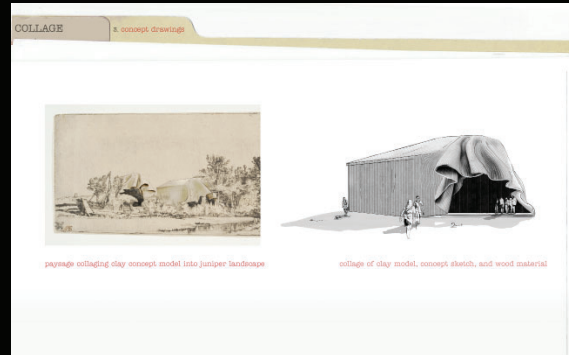
1



2



3



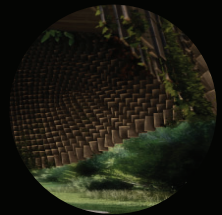
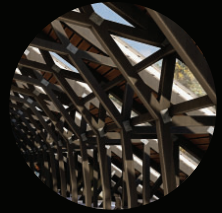
4

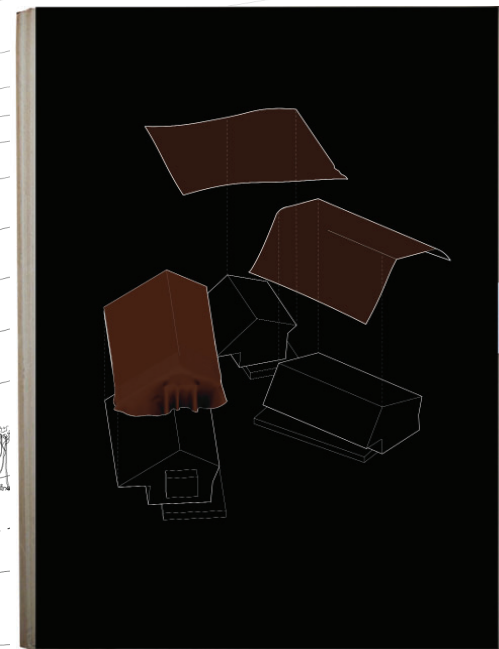
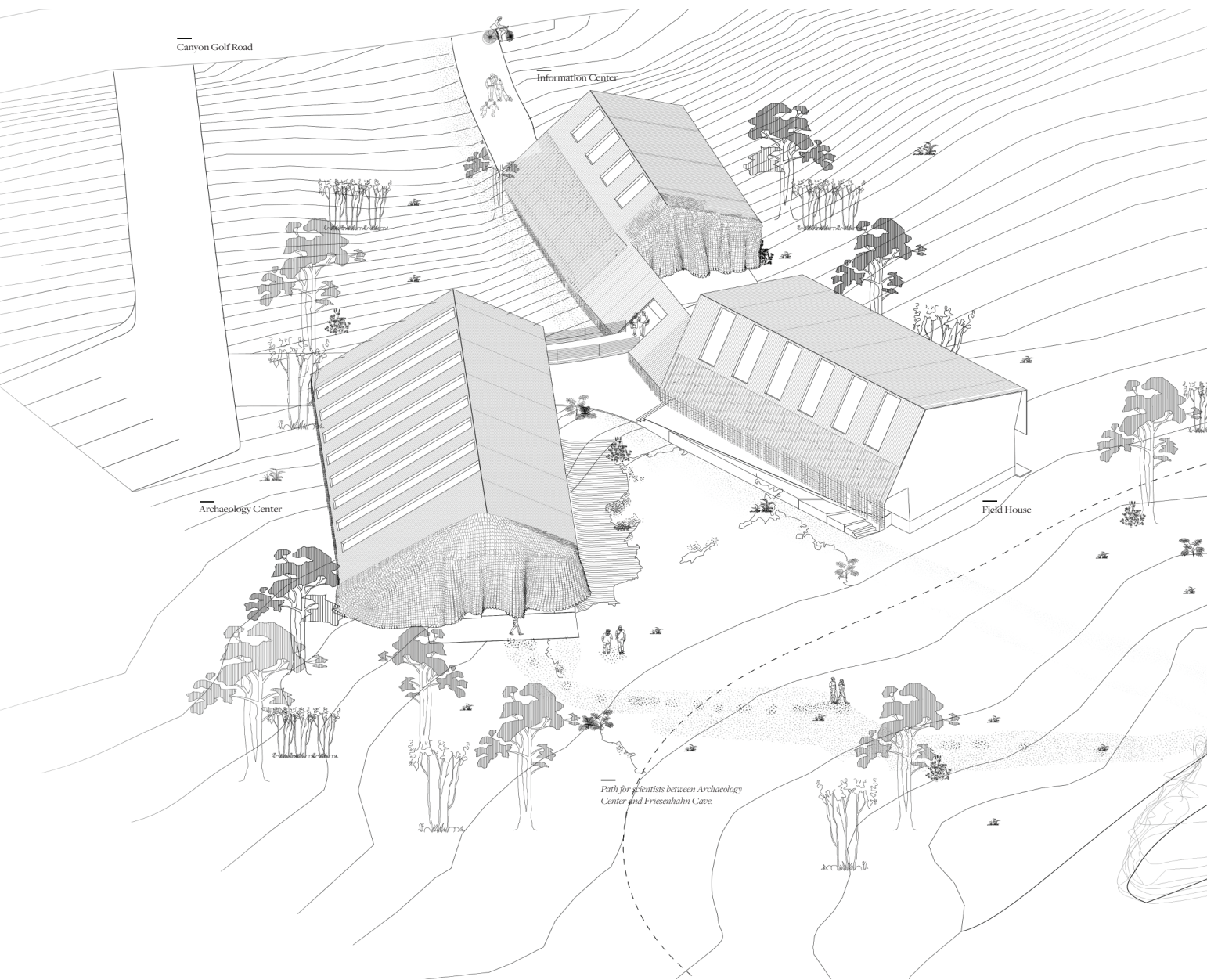
[1] Steve Harrington, *Ontario Barn septia*, 2012. Coffey, *Tredegar House: Stables*, Newport.

[2] clay study models

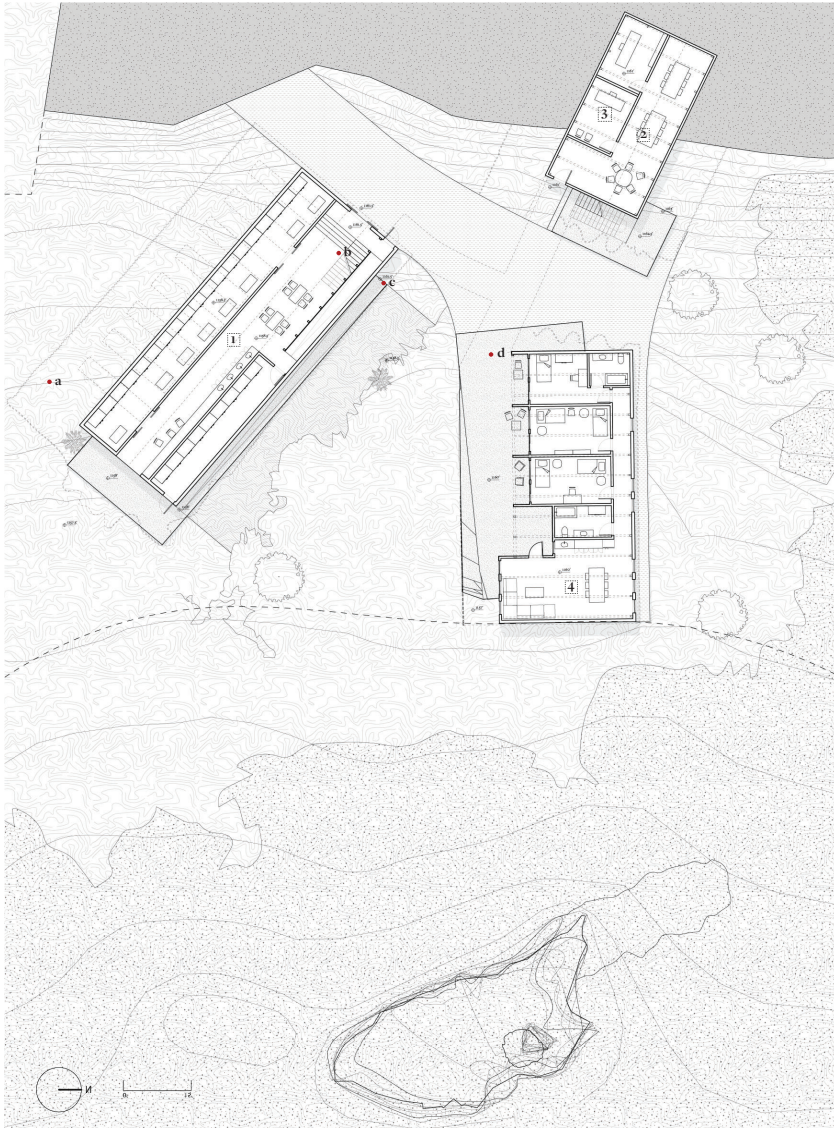
[3] Irene Spadacin, *Veiled Woman*. Kevin Francis Gray, *Face Off*, 2007

[4] Concept images: collage of clay models and sketches.





The first of the barns titled the **Archacology Center** houses the climate controlled archive on its first floor, with the lab above it. The lab is open to observation of the archive below, and its organization is informed by the typology of the building's wooden trusses. The entire building is pointed toward Friesenhahn Cave to facilitate the movement of equipment and circulation of scientists to and from the cave. The second barn or **Field House** includes the field house on the first floor and the library on the second floor to establish circulation between the researchers and the visitor center. The final and smallest building titled the **Information Center** includes a classroom, the visitor check-in, and support spaces.



5

[5] first level plan of 3 barns



6

ARCHAEOLOGY CENTER

[1] *archive*

INFORMATION CENTER

[2] *classroom*

[3] *offices (support)*

FIELD HOUSE

[4] *field house*

[6] view from point **d** facing the cave



7

[7] view from point **b** between archive spaces



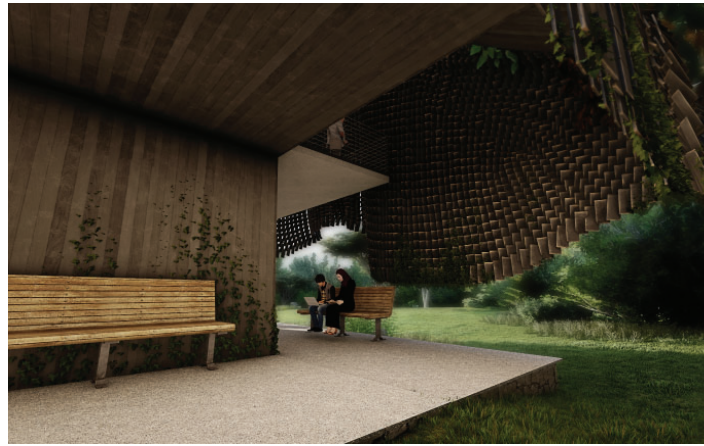
8

ARCHAEOLOGY CENTER
[5] *lab*

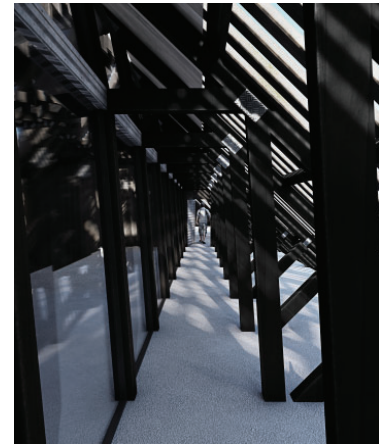
FIELD HOUSE
[8] *library*

INFORMATION CENTER
[6] *visitor check-in*
[7] *bathrooms (support)*

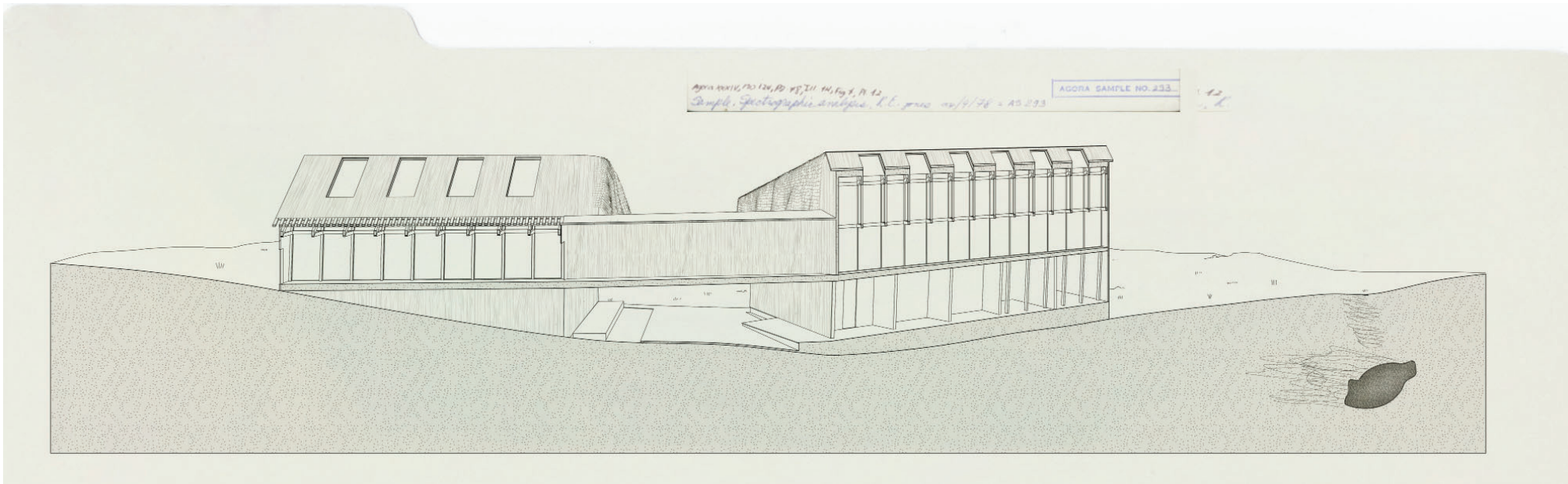
[8] second level plan of 3 barns



10



11



9

[9] longitudinal perspective section through information center and field house

[10] view into 'draped' porch and balcony space

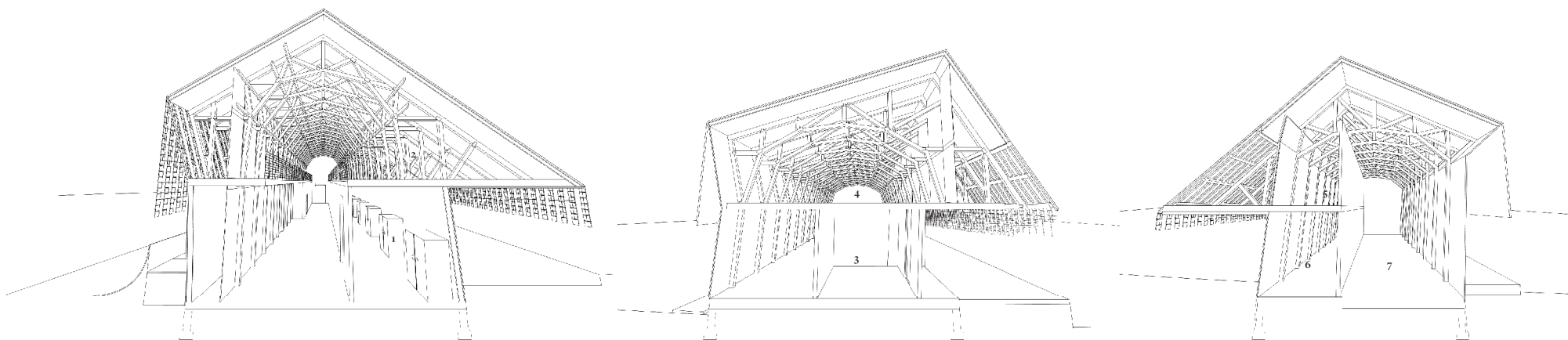
[11] looking from point **g** down shaded interior-exterior circulation path



[12] site plan



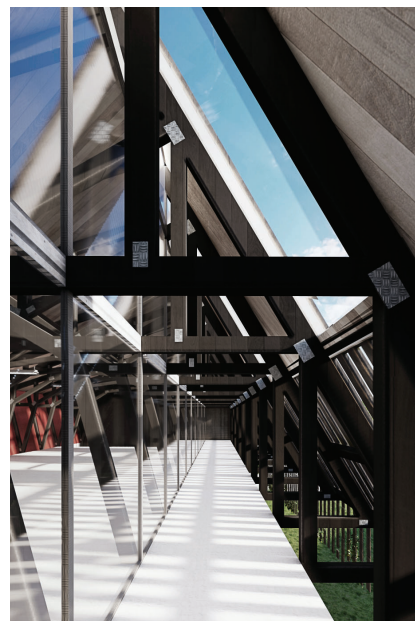
[13] view from point c of exterior circulation through site underneath draped porch



14



15



16

ARCHAEOLOGY CENTER

- [1] archive
- [2] lab

FIELD HOUSE

- [3] field house
- [4] library

INFORMATION CENTER

- [5] visitor check-in
- [6] offices (support)
- [7] classroom

[14] perspective sections

[15] view from point **c** looking out into lab and down into archive space

[16] view from point **f** looking down the wing of a truss providing shaded exterior circulation

