

2020 MERIT

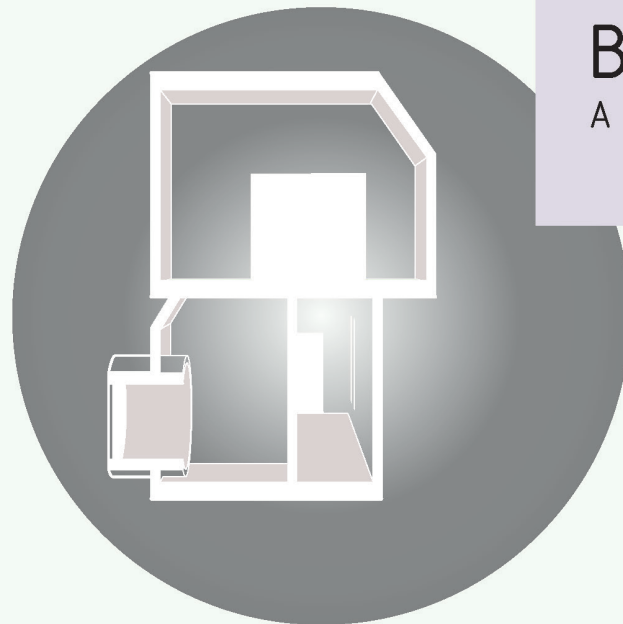
Chizoba Ibeanusi

UNIVERSITY OF SOUTHERN CALIFORNIA

FACULTY ADVISOR - GARY PAIGE

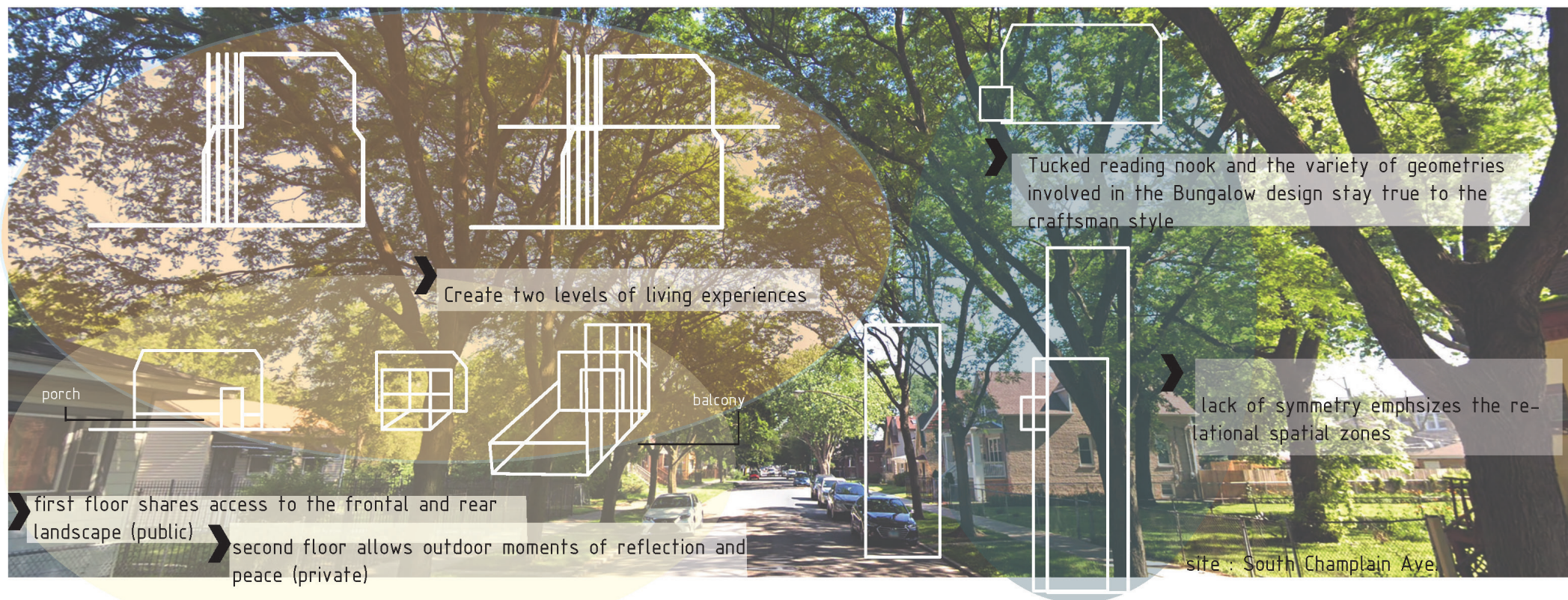
LYCEUM

A traveling fellowship in Architecture



Buy Us, For Us

A Chicago Bungalow for a Diverse, Millennial Family



We deserve healthy indoor environments.

We deserve the comfort of where to call home.

We have worked tirelessly for generations.

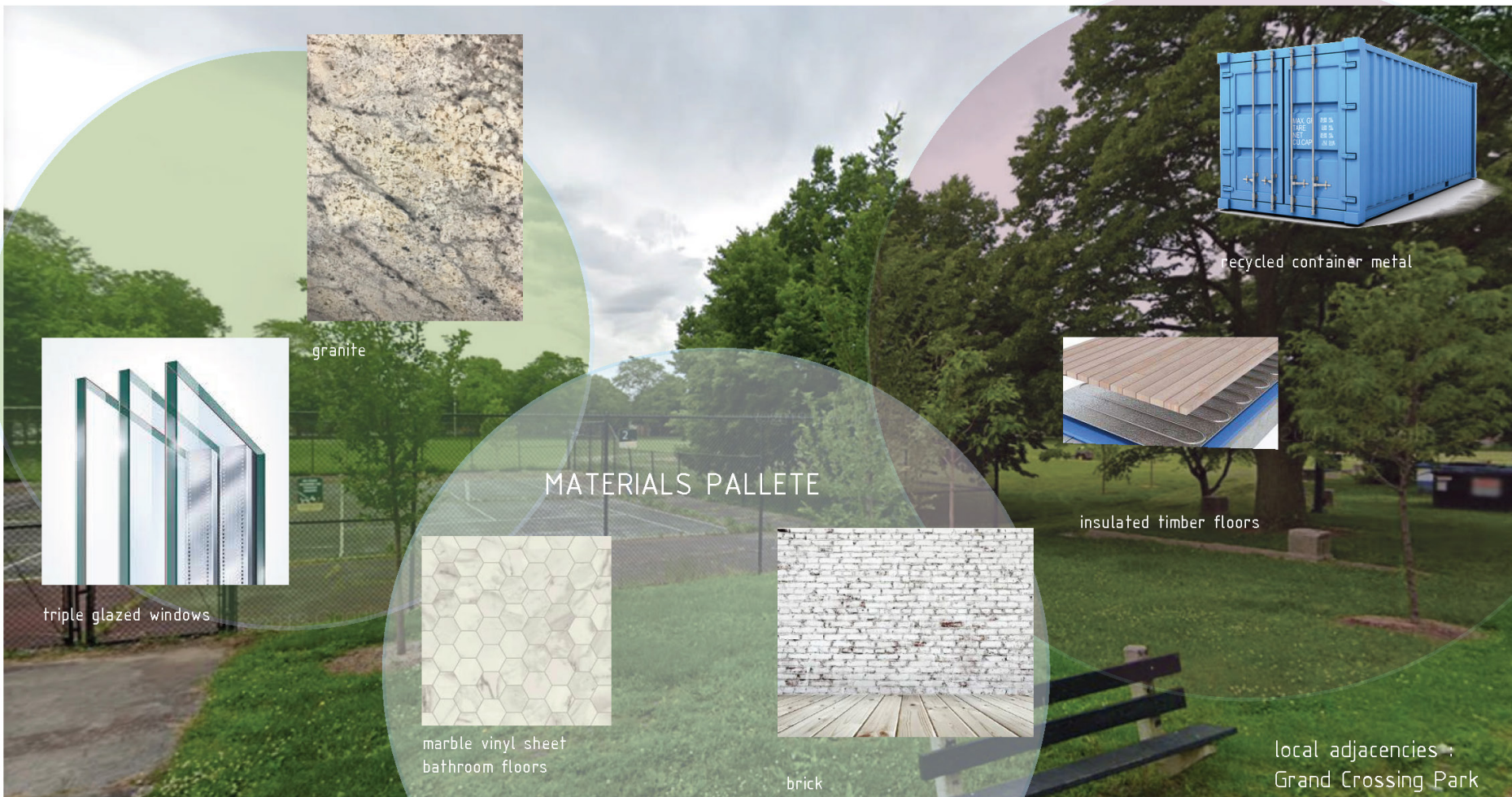
Now is when we harness our spending power

buy homes for us,

built by us.

Buy Us – refers to investment that community members and ultimately residents must put into Park Manor to ensure that the design goes beyond a proposal. It's imperative that residents invest in their own communities especially one like Park Manor on the Southside of Chicago where public investment is lacking. Black buying power must be intentional not only towards a singular property purchase but also towards long term sustainable improvement to the general community.

For Us – This investment into this new type of bungalow will not only revitalize the neighborhood but will serve as a financial asset for generations to come. The design takes into consideration the lifestyle of the diverse residents and their desire to entertain guests, enjoy outdoor space, while maintaining a sense of privacy. The home includes a working office/ studio to reflect the changing working conditions as well as ample landscape that can be utilized in Chicago from April to October for home gardening. The people of this community deserve a home to laugh, gather and relax despite the historical and current circumstances of Southside Chicago.



Development in Park Manor matters.

Too many empty lots, not enough libraries.

*Too many liquors stores, not enough community
gardens.*

➤ Homeownership in the U.S. is on a steady decline. Chicago is one of the few major cities in the country where the middle class can still purchase homes in the city proper. This design intends to use affordable industrial materials that reflect the purchasing class in the hopes of lower mortgages. However, quality and comfort should not be compromised especially from the interior. The Chicago Bungalow is timeless, exuding durability for decades to come.



summer squash



carrots



wild bergamot



catmint



lime hydrangeas



beans



thyme and other herbs

GARDENING + LANDSCAPE RECOMMENDATIONS

local adjacencies : Park Manor Elementary School

We've been neglected in this part of town.

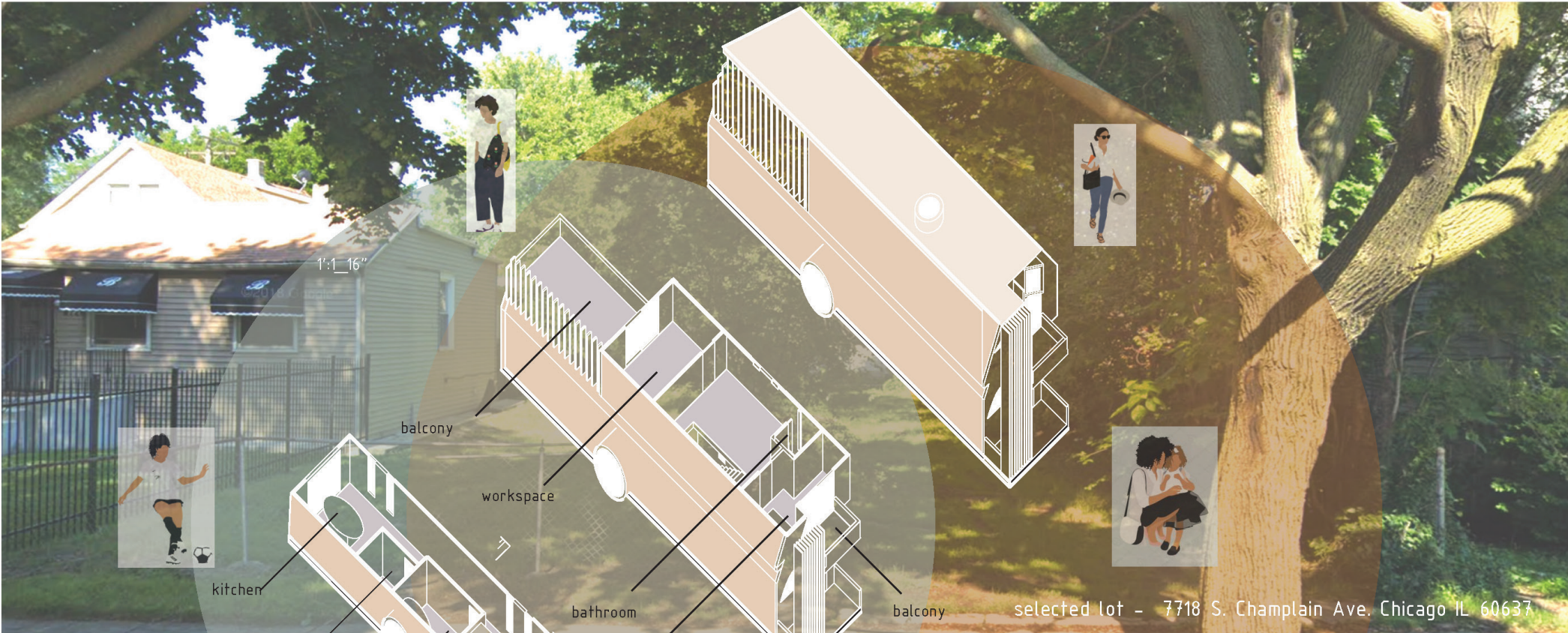
Let's make it our own. Take it all the way.

Revitalize.

buy us,

for us.

- Bungalows were originally used in India by the British as imperialist hideaway homes. The bungalow of today is built for the diverse, millennial family, couple, or single homeowner. The Chicago bungalow is affordable, sleek, inviting and unassuming.
- The program works with the needs of the direct community from the inside and outside. Food production can encourage healthy options for cookouts and family dinners.



1' = 16"

balcony
workspace
bathroom
bedroom
kitchen
bathroom
bedroom
living room
porch
balcony

selected lot - 7718 S. Champlain Ave. Chicago IL 60637

AXONOMETRIC PLANS

Two story home.
Floor to ceiling windows.
Yes floor to ceiling windows, in Southside.
We've toiled, we deserve those too.

➤ Shade from the seasoned natural foliage allows for ample natural light apertures without excess heat gain.

➤ Angularity of the apertures takes into consideration the heavy snow in winter months to reduce the need for excess shoveling and maintenance.

- 1
- 2
- 3
- 4
- 5
- 6
- 7
- 8



1' : 1_8"

Inspired by late summer nights

I used to know.

Listening to Solange and Common

Sipping some iced tea from Roy's Soul Food.





A frontal balcony exposes the master bedroom to the street so its residents are aware of what is happening nearby. Mix of outdoor and indoor space on the second level fully utilizes the lot and encourages healthy living and outdoor gathering.



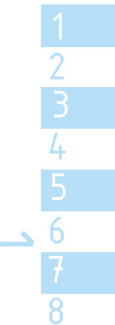
Vertical slabs provide structure and privacy through screened light.

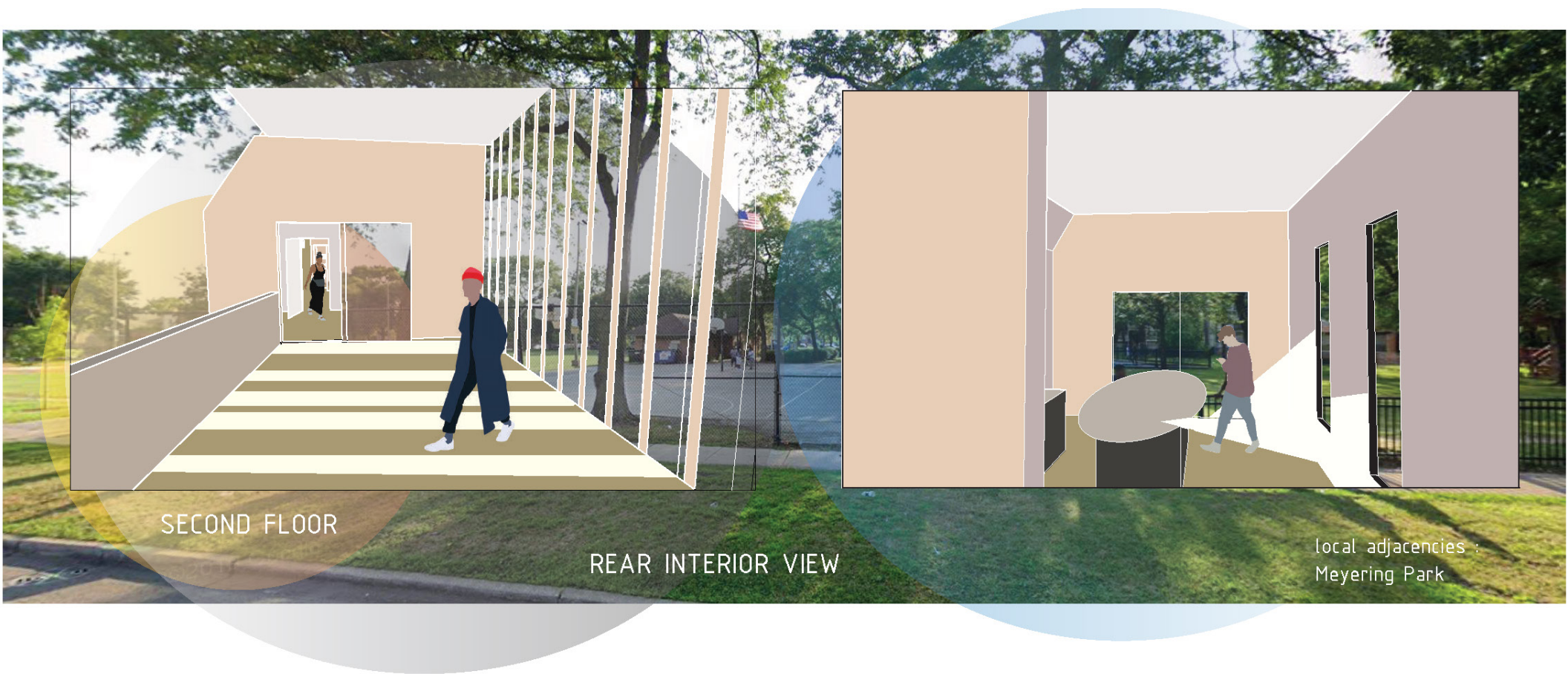
Inspired by the arts and

craft movement.

Hard working hands thriving in a

craftsman home.





SECOND FLOOR

REAR INTERIOR VIEW

local adjacencies :
Meyering Park

Gun violence has taken innocent

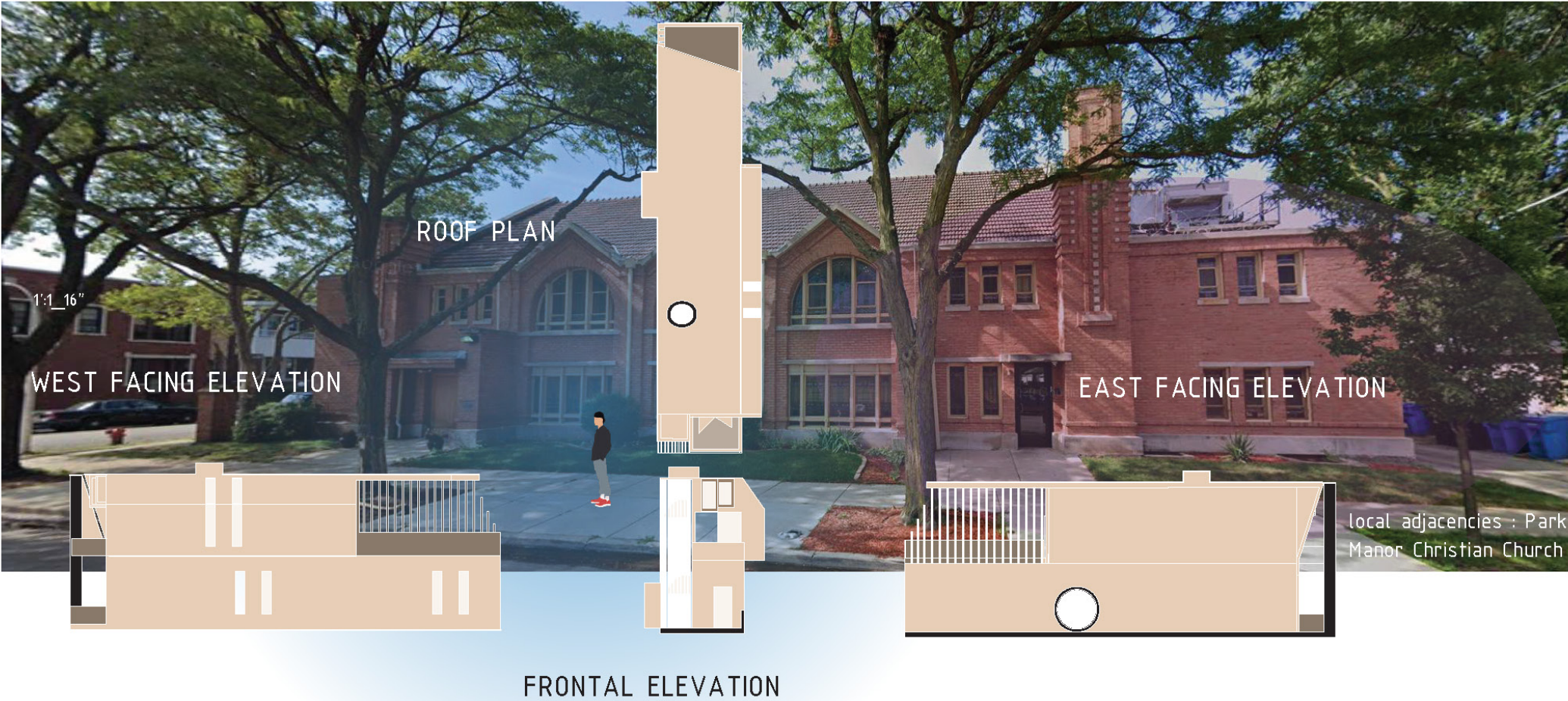
lives on the Southside.

It stops now.

Our youth matter.

Architecture serves a greater purpose

to rejuvenate the streets.



local adjacencies : Park
Manor Christian Church

We look back at where we've come.
And look forward to better days.
Buy us, for us.
From the Southside,
with love.

- 1
- 2
- 3
- 4
- 5
- 6
- 7
- 8