

2026 THIRD PRIZE

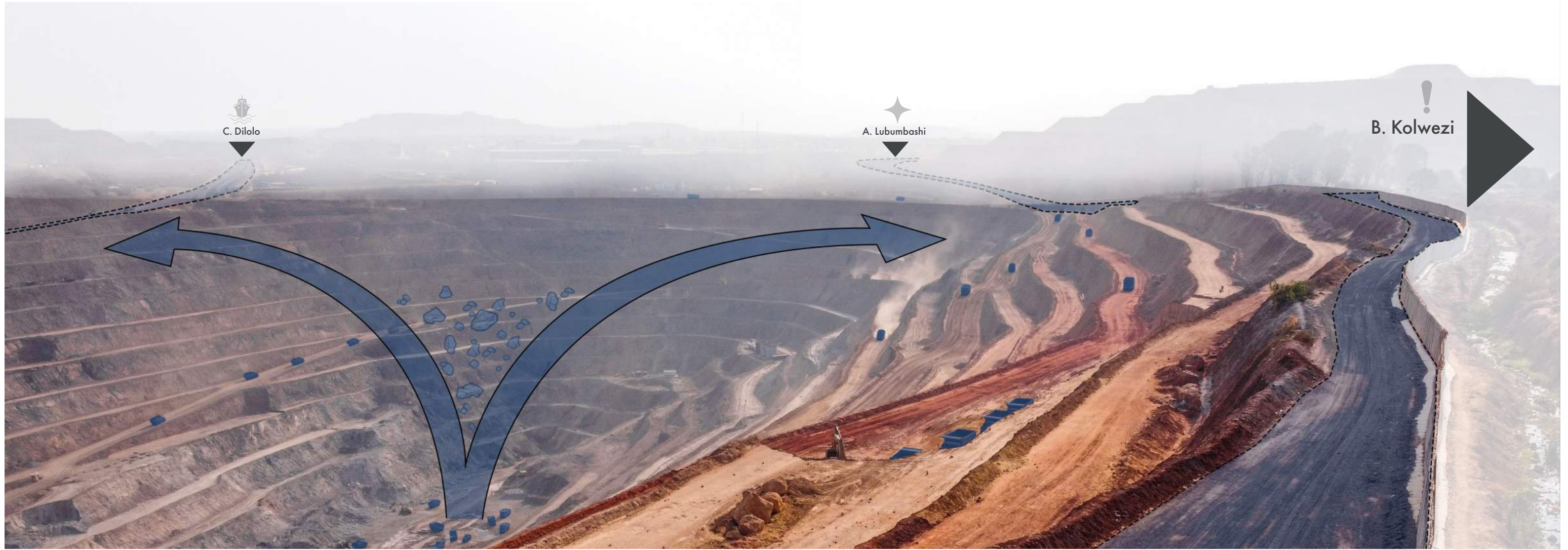
Merv B. Benjamin

BOSTON ARCHITECTURAL COLLEGE

FACULTY ADVISOR – SHAUN LYNCH

LYCEUM

A traveling fellowship in Architecture



REVERSE THE CORRIDOR

From Mine to Port: The Corridor That Eats the Commons

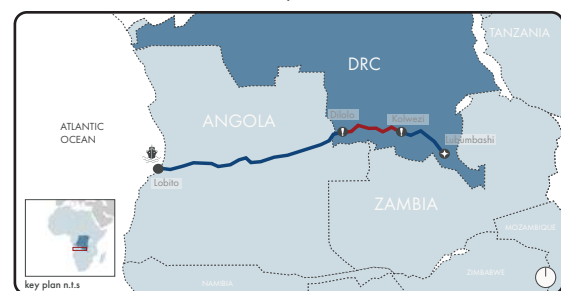
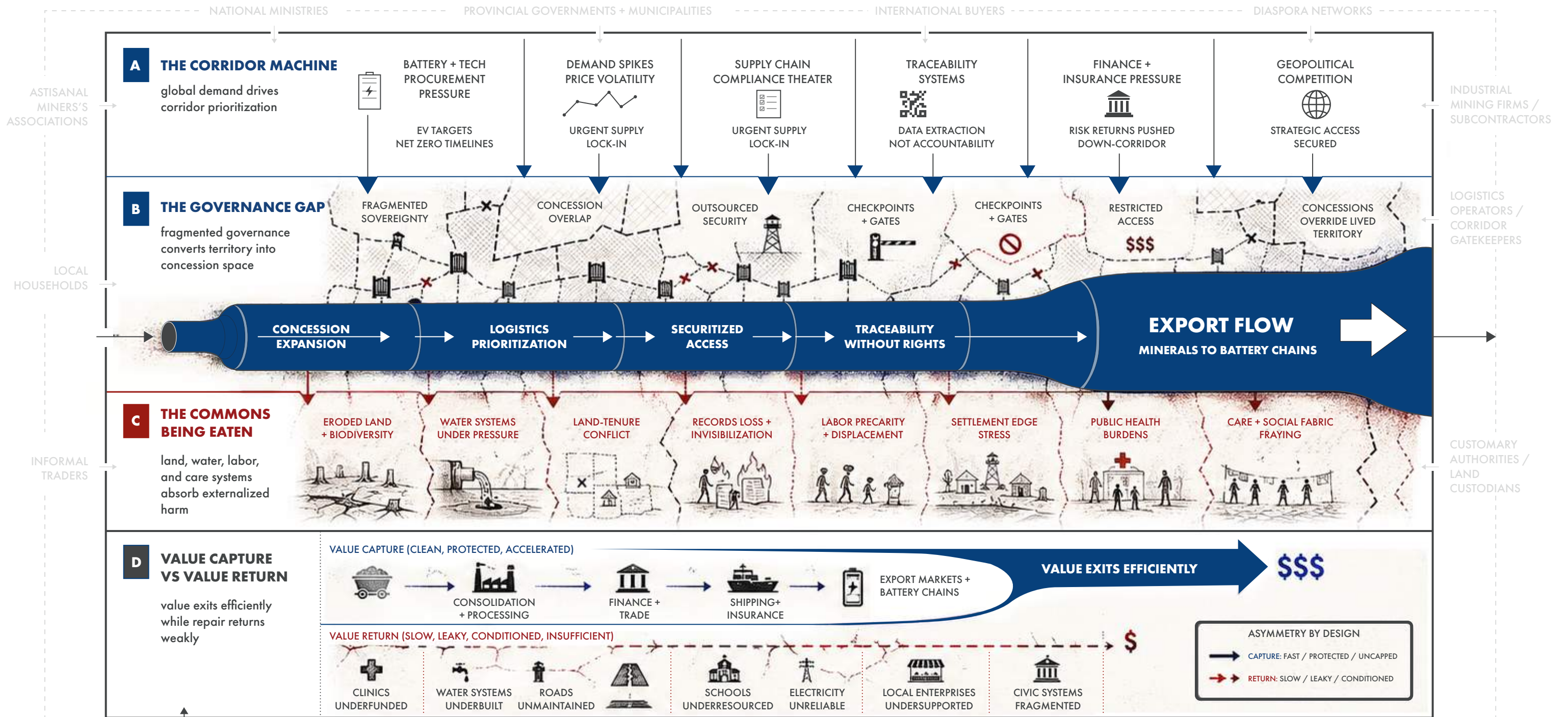
Democratic Republic of Congo's mineral corridors are treated as national assets, but operate as privatized value-extraction systems that externalize risk, fracture civic life, and hollow out land rights: unless we redesign the corridor as a commons-making institution.

Kolwezi ←→ Dilolo Justice Segment



02 THE CORRIDOR MACHINE

How mineral logistics produces territorial conflict



LOBITO CORRIDOR

- Existing Rail / Road
- Kolwezi-Dilolo Segment (Project Focus)
- National Borders

CONFLICT HERE IS NOT INCIDENTAL. IT IS DESIGNED INTO THE CORRIDOR.

03 BRIEF / PROVOCATION

Reverse the corridor into a commons-making public utility

01 | CONTEXT

The **Lobito corridor** through the **Kolwezi-Dilolo segment** currently operates as a **one-way machine of export**. Minerals, capital, and strategic attention move efficiently outward, while contamination, land insecurity, labor precarity, displacement risk, and civic underdevelopment remain local. The corridor does not simply cross territory; it reorganizes it. Concession boundaries override lived claims, logistics take precedence over public service, and fragmented jurisdiction turns rights into matters of negotiation instead of guarantees. Water, health, and everyday livelihoods absorb the externalized costs of extraction while value accumulates elsewhere. The result is a landscape where land records disappear, settlement edges intensify, ecological harm travels downstream, and public trust erodes. What appears as infrastructure is therefore a political-spatial apparatus that concentrates benefit upward and outward while leaving territories to manage the damage. If the conflict is produced by the corridor as presently designed, then the project must begin by reversing the corridor itself.

02 | THE REVERSAL

The project proposes a **Corridor Commons Protocol** that converts the corridor from an extractive conduit into a commons-making public utility. Rather than compensating after the fact, the protocol designs the conditions through which extraction must return as rights, repair, and public capacity. It does so through **three linked moves**. First, it redesigns jurisdiction by establishing a **Corridor Commons District**: a legal-spatial overlay that thickens where rights break down and creates shared interfaces for co-recognition, documentation, and mediation. Second, it redesigns value flow by redirecting a portion of corridor wealth-royalties, fees, buyer obligations, and repair funds-into a **Commons Fund** governed through land legitimacy, public authority, and civic oversight. Third, it redesigns **spatial interfaces** by building civic and ecological infrastructures where the corridor meets conflict: registry and mediation spaces, water and health services, repair landscapes, cooperative support, and public dashboards. The corridor no longer passes over territory as an exception; it becomes a system answerable to territory.

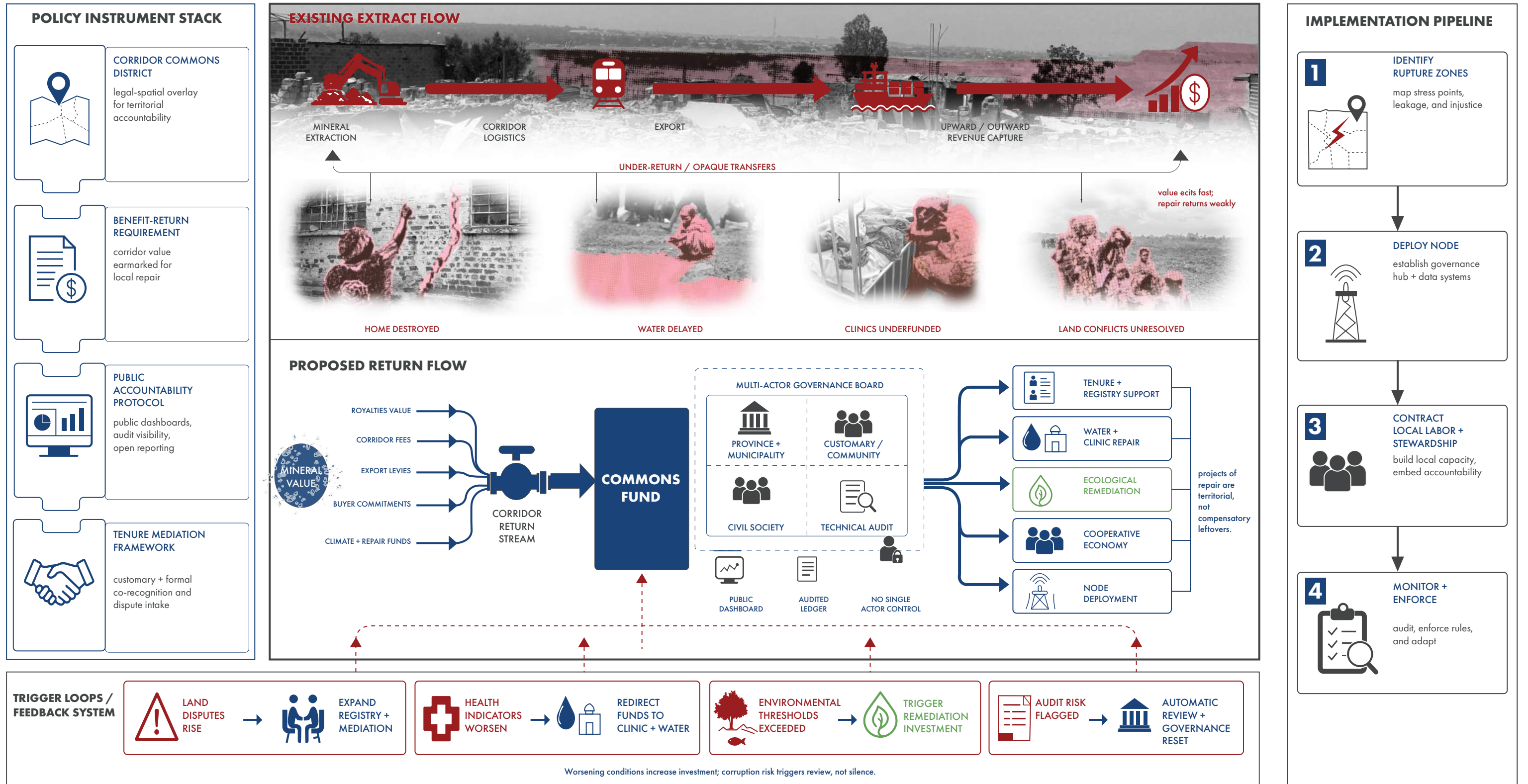
03 | OUTCOME

The project is therefore **not a single building** or **a single policy reform**. It is a **coalition architecture** assembled by customary land stewards, municipal and provincial institutions, civil society and women-led organizations, labor advocates, service providers, independent monitors, and support partners. That coalition materializes the protocol through commons districts, repair spines, and **Corridor Commons Nodes**-public stations where governance, care, labor support, and stewardship meet in daily life. These are not amenities added to extraction; they are institutional and spatial instruments for rebalancing power along the corridor. Here, land claims are stabilized, water and health systems are repaired, ecological damage is monitored and treated, livelihoods are supported, and public accountability is made visible. Success is measured not by exported tons alone, but by **returned value**: stronger land security, better water and health, safer labor, and durable civic capacity.

THE CORRIDOR BECOMES ACCOUNTABLE TO THE LIFE SYSTEMS IT DEPENDS ON.

04 REVERSING THE FLOW

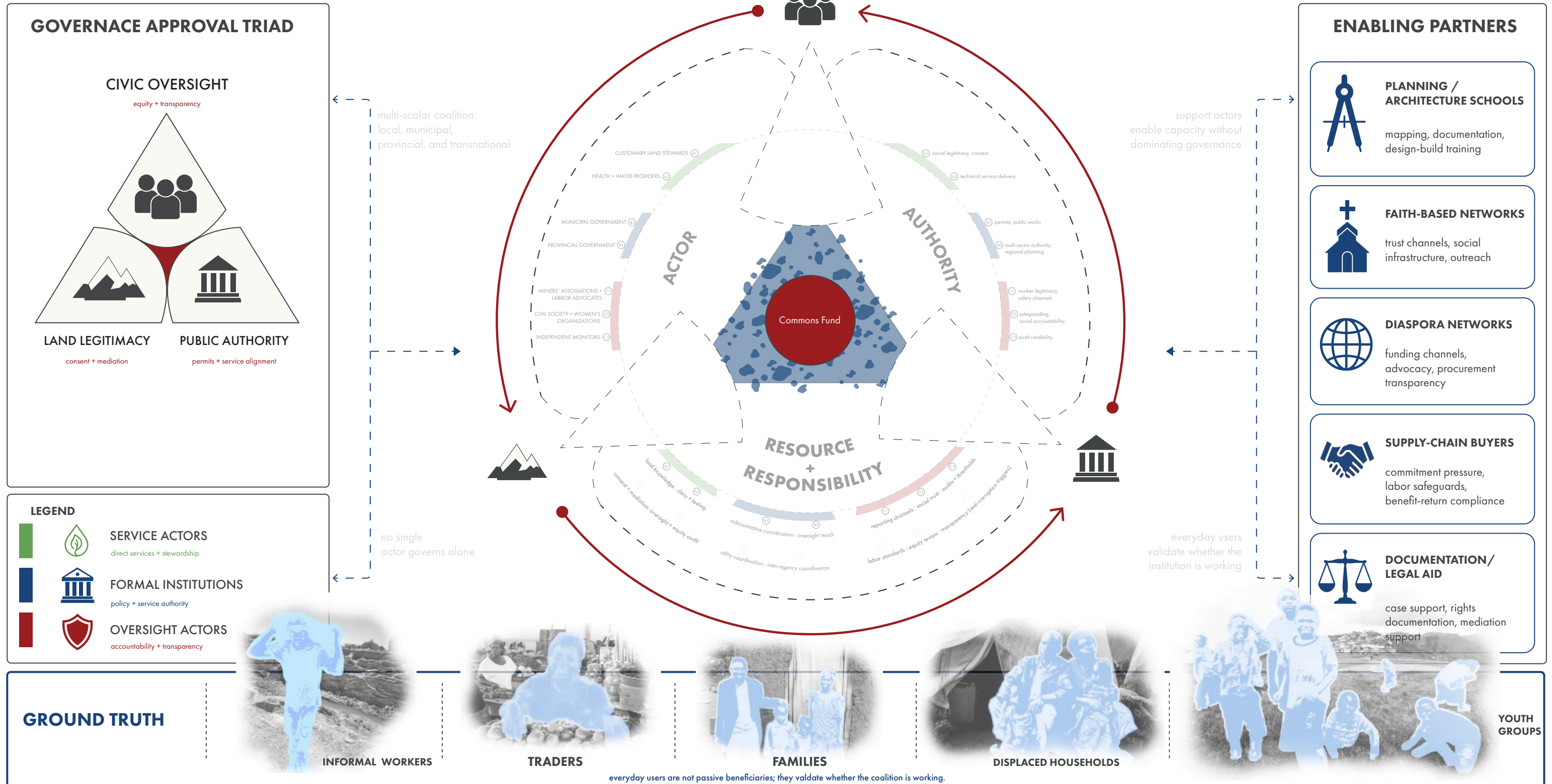
How corridor value is redirected to territorial return



VALUE NO LONGER EXITS WITHOUT RETURN.

05 ASSEMBLE THE COALITION

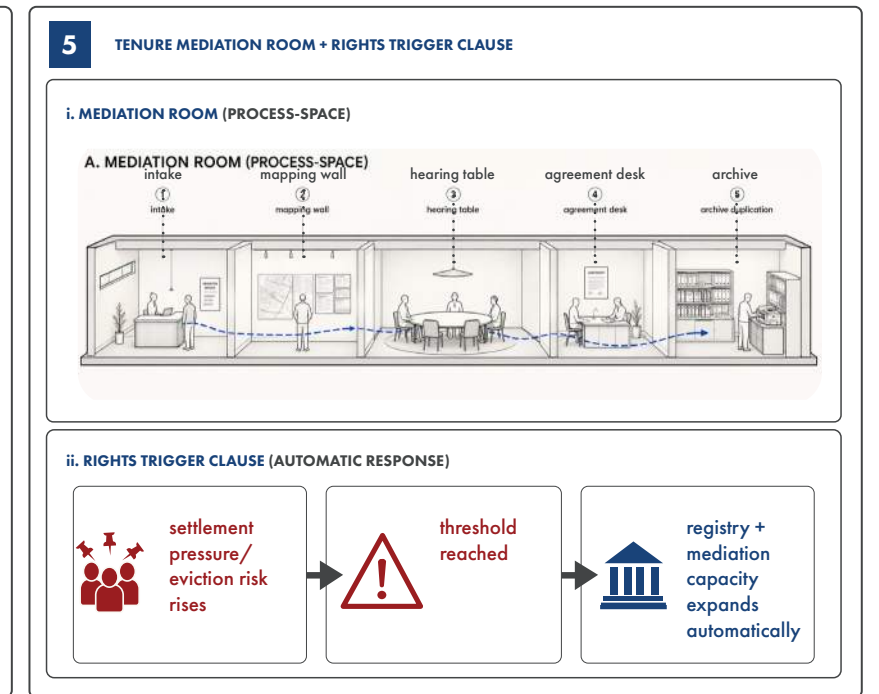
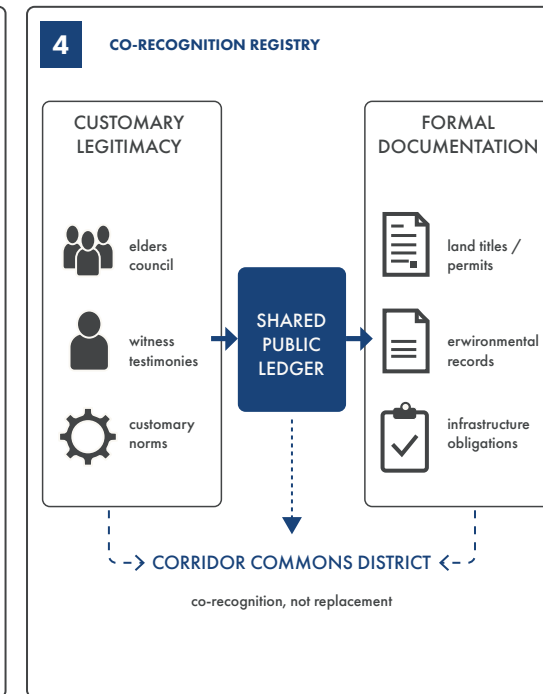
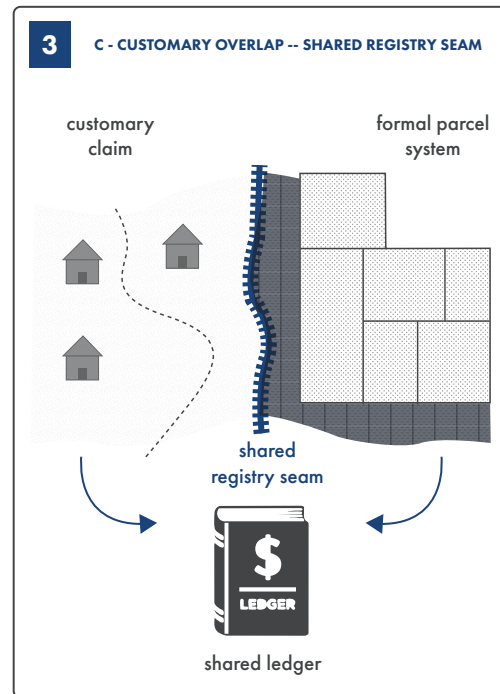
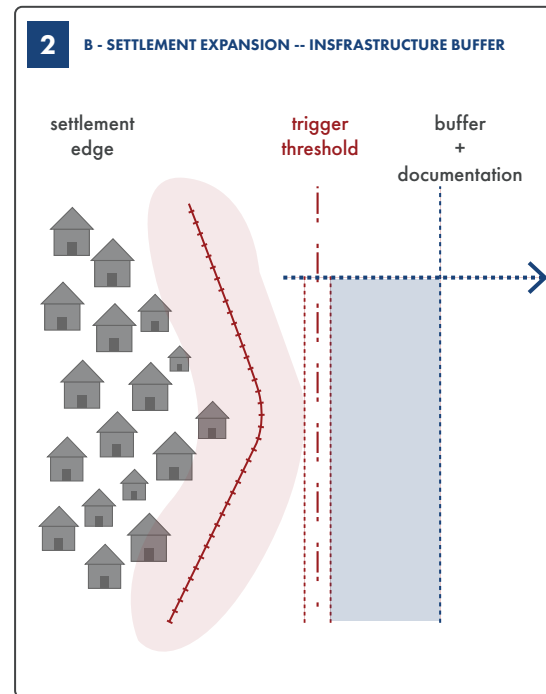
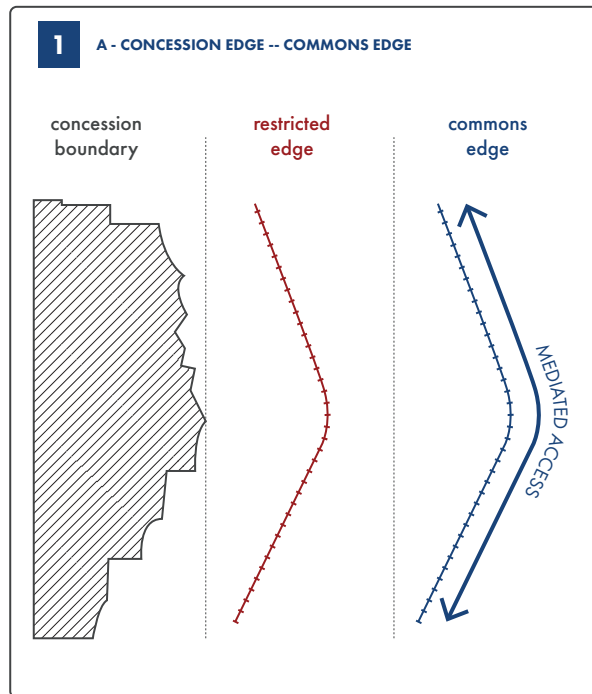
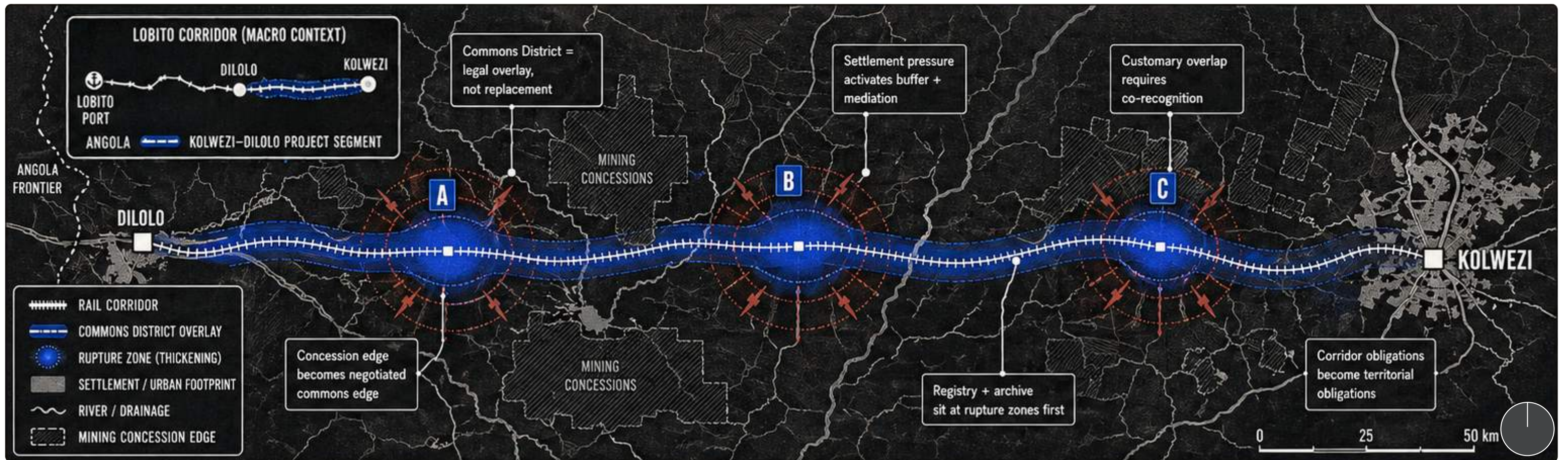
Who legitimizes, operates, and sustains the corridor commons



NO SINGLE ACTOR CAN CONTROL THE COMMONS FUND.

06 REDRAWING JURISDICTION

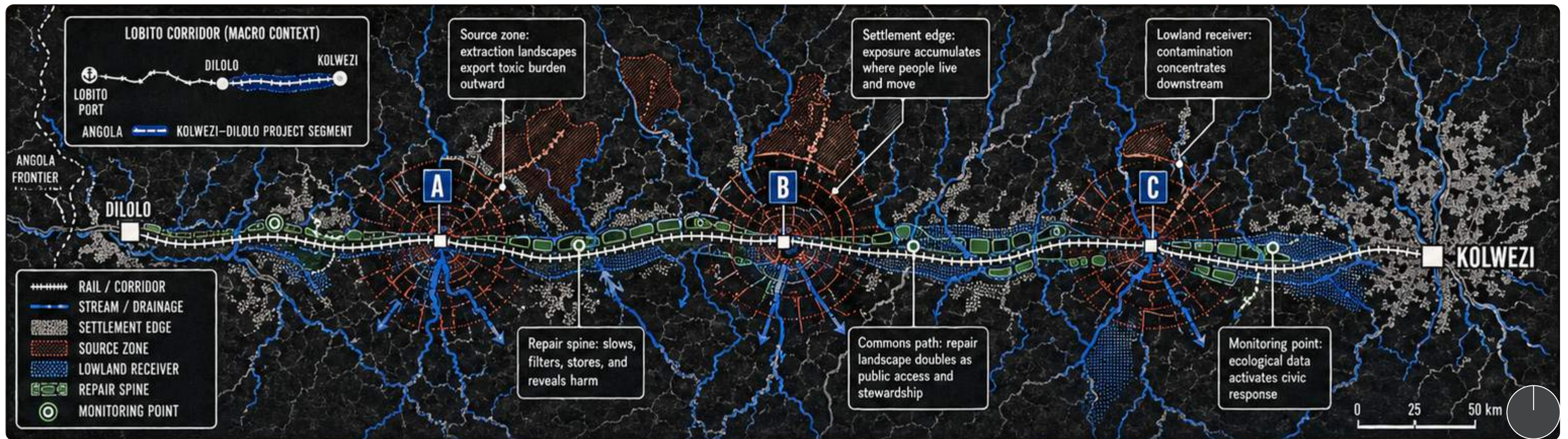
How the corridor commons district reorganizes rights along the Kolwezi-Dilolo segment



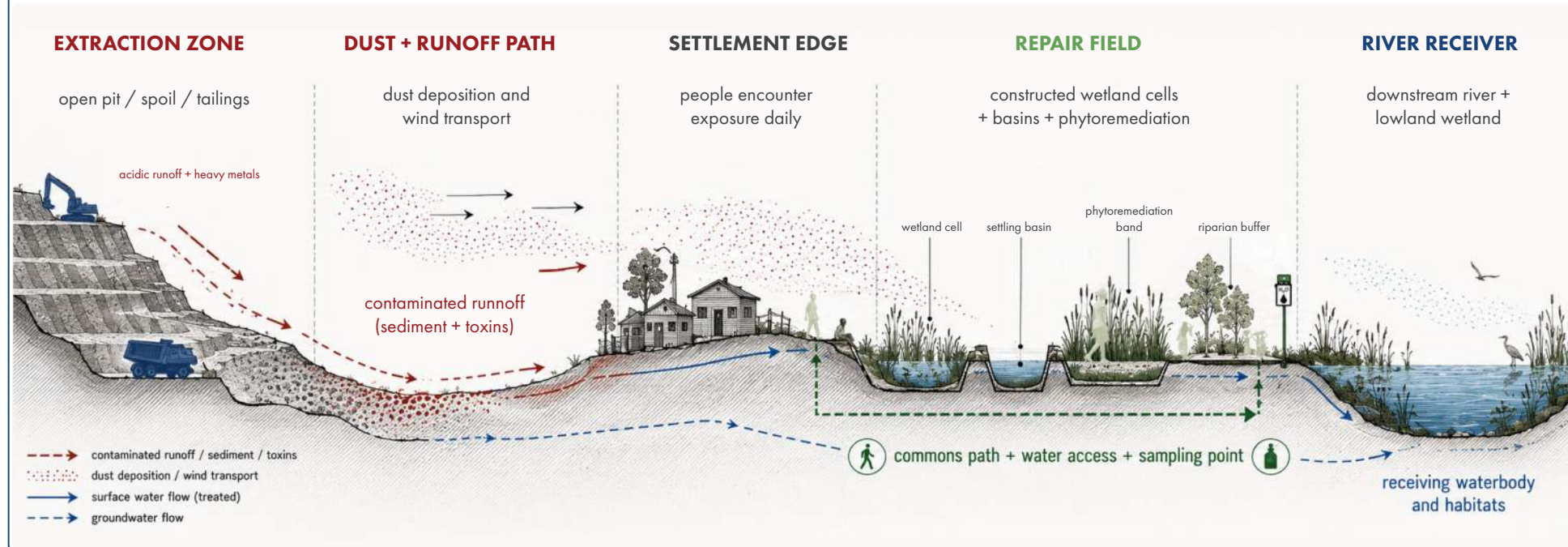
THE CORRIDOR IS REDRAWN WHERE RIGHTS BREAK DOWN.

07 REPAIR THE CORRIDOR'S METABOLISM

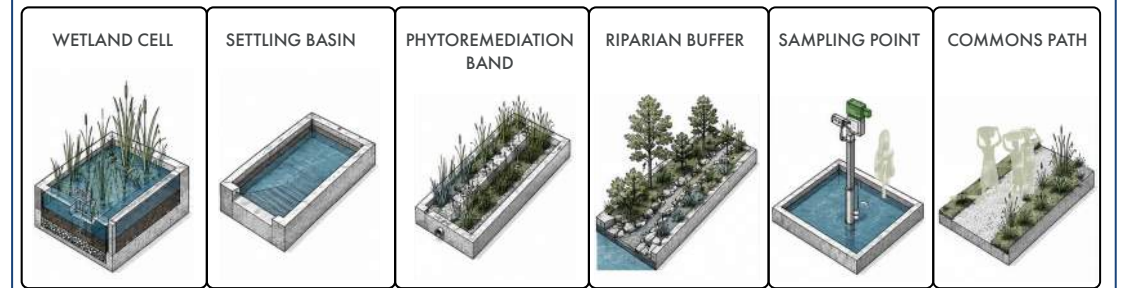
How the repair spine intercepts harm along the Kolwezi-Dilolo segment



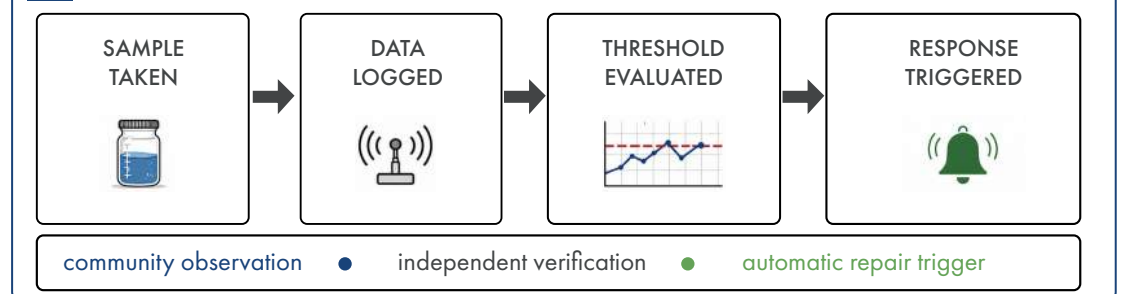
1 TRANSECT SECTION: MINE / SETTLEMENT / RIVER



2 REPAIR TOOL KIT



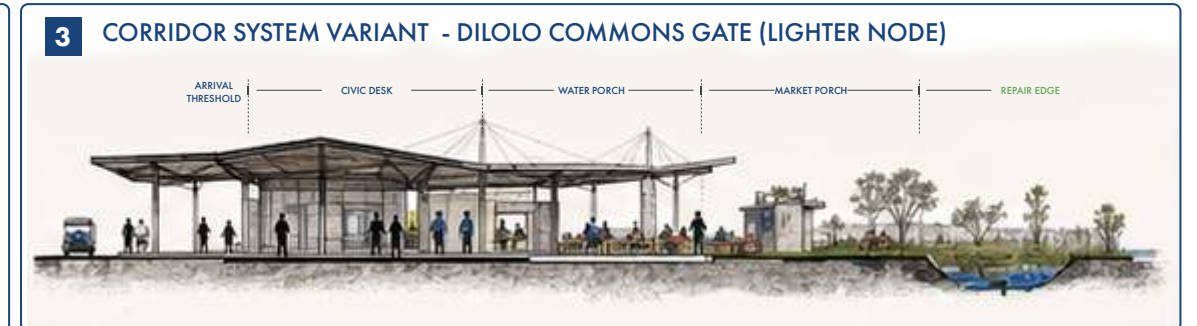
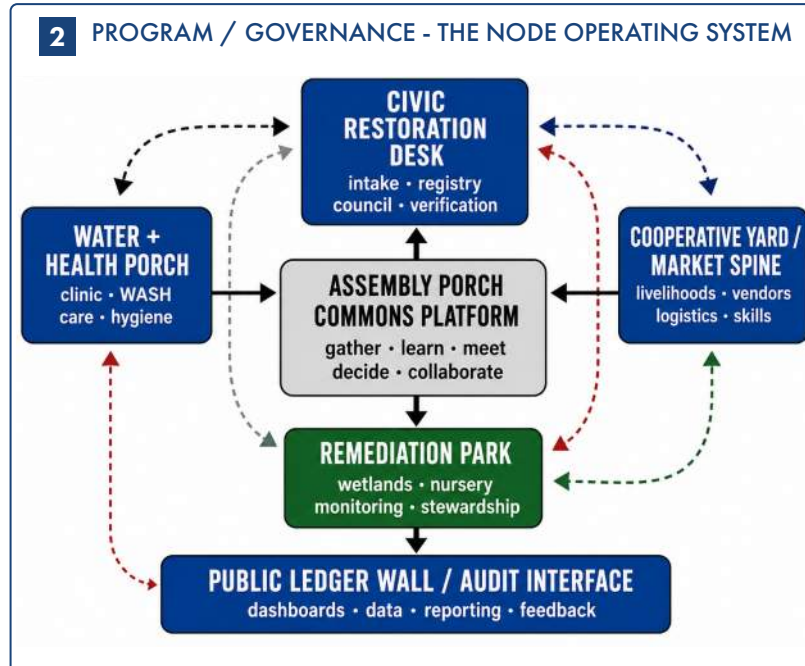
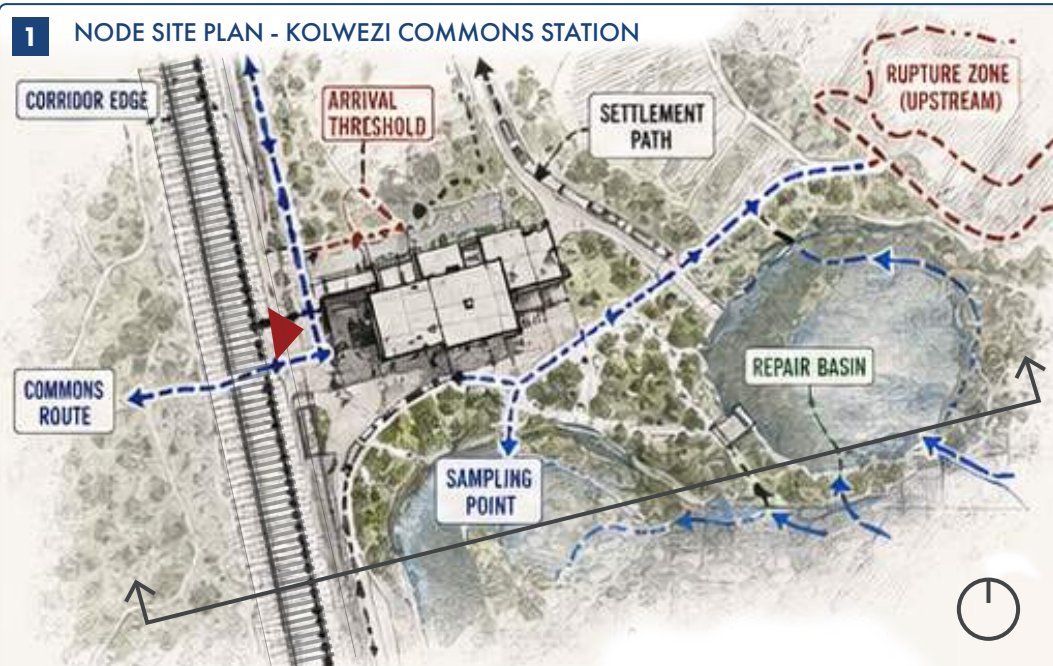
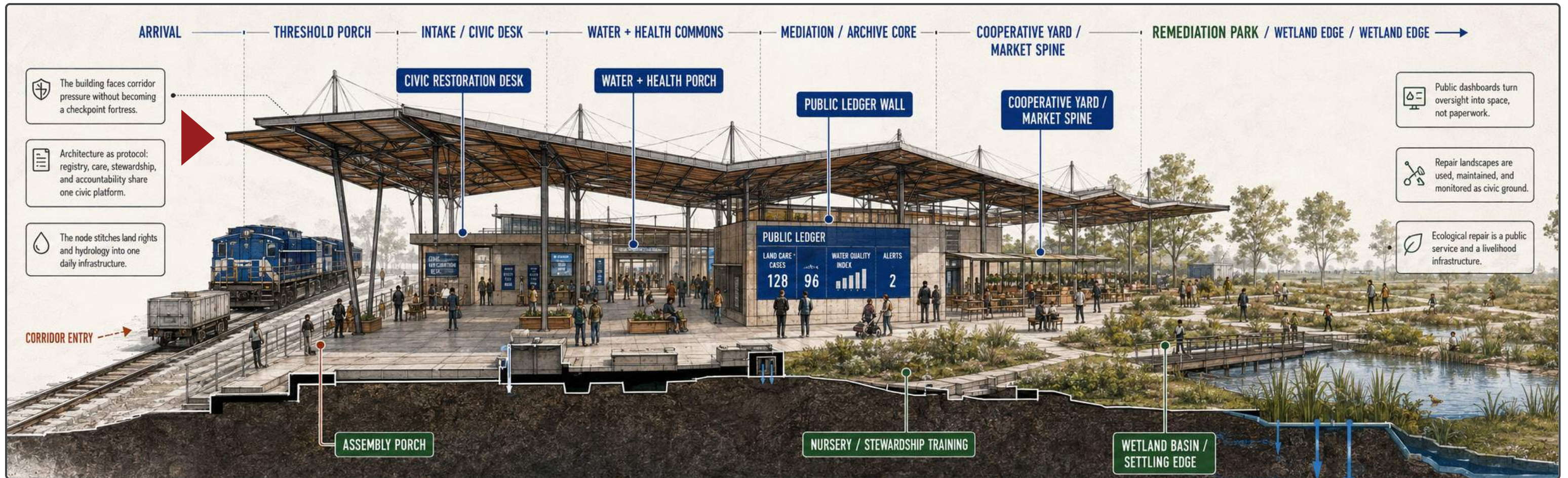
3 MONITORING AS ECOLOGY



REPAIR INTERCEPTS HARM WHERE PEOPLE AND WATER MEET.

08 BUILDING THE INTERFACE

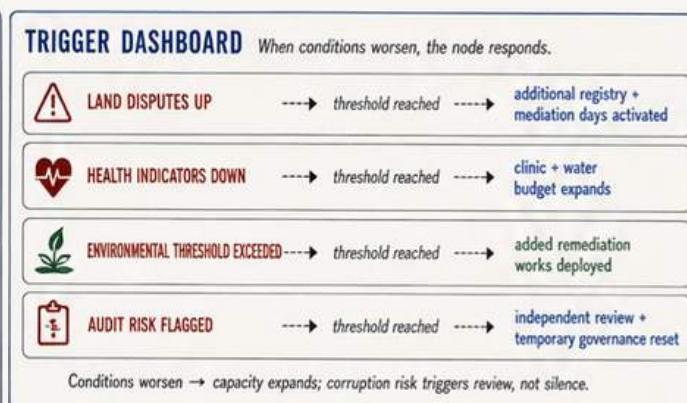
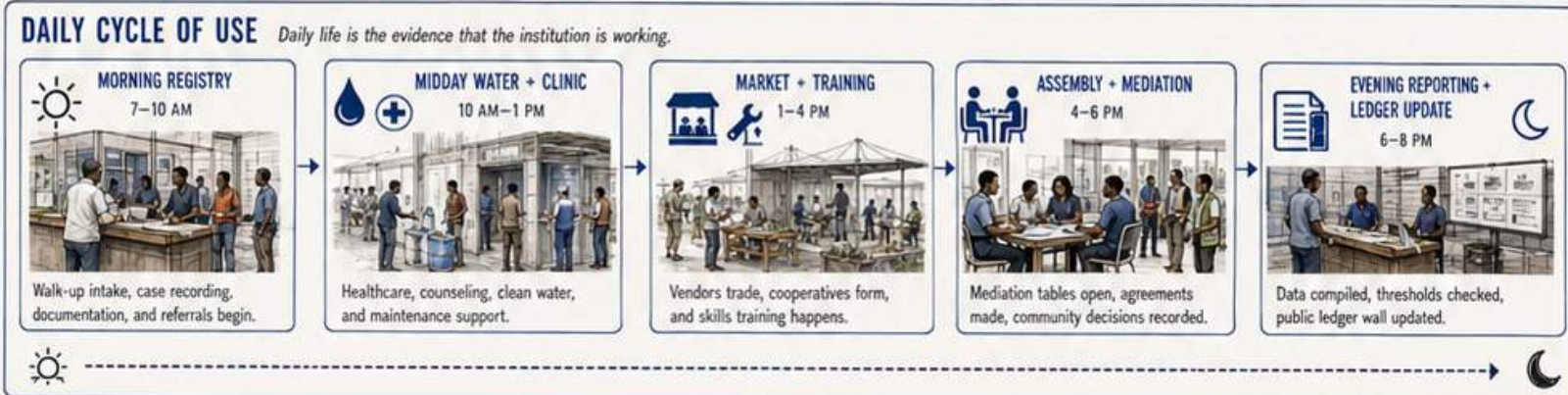
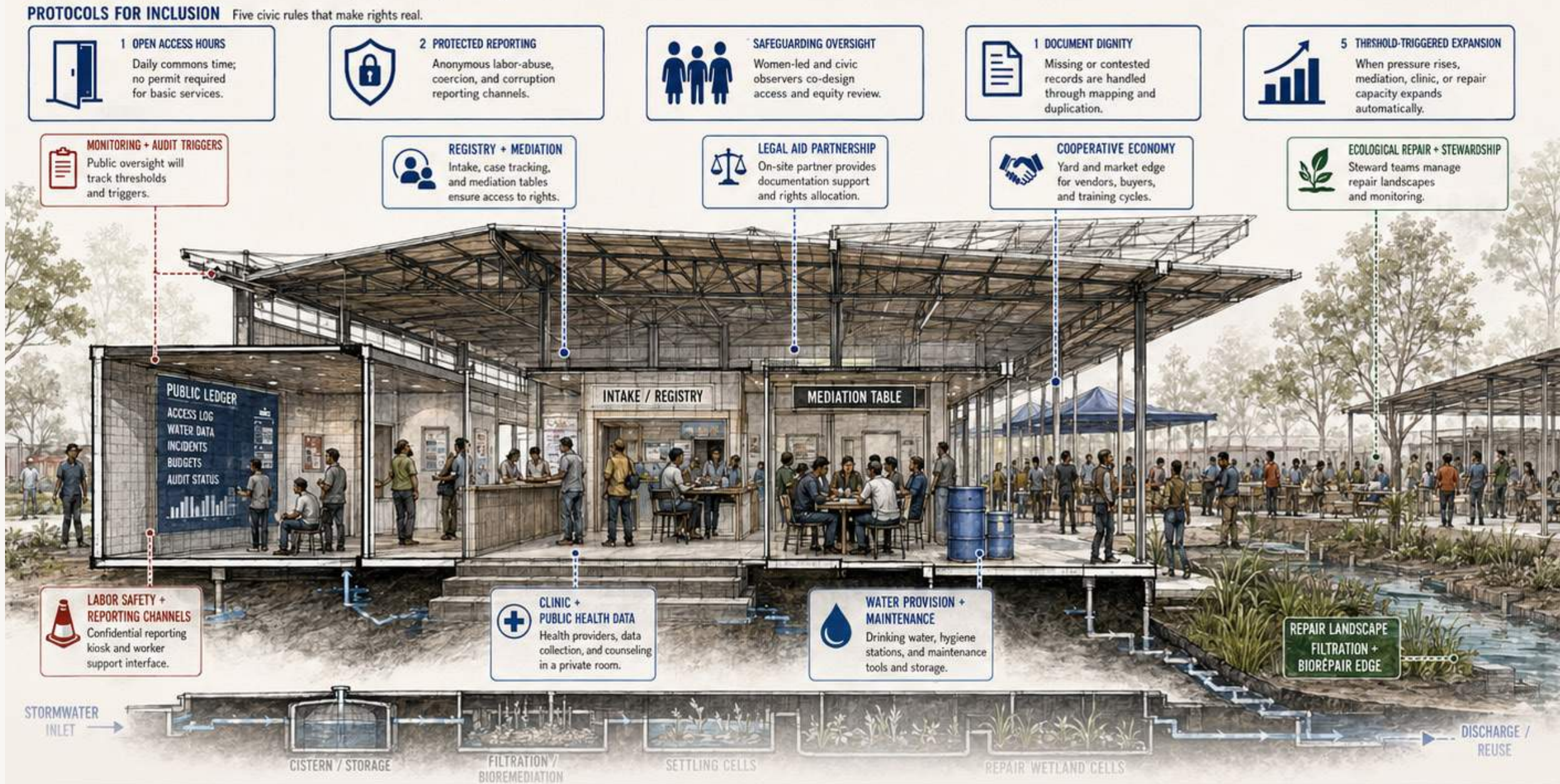
How the corridor commons node give rights, repair, and accountability architectural form



THE NODE TURNS RIGHTS, REPAIR, AND ACCOUNTABILITY INTO DAILY PUBLIC INFRASTRUCTURE

09 PROGRAM & PROTOCOLS FOR INCLUSION

How the corridor commons node is used, governed, and expanded over time



SUCCESS IS MEASURED IN RETURN VALUE, NOT ONLY EXPORTED TONS