

2019 MERIT

Joy Mullappally

LYCEUM

A traveling fellowship in Architecture

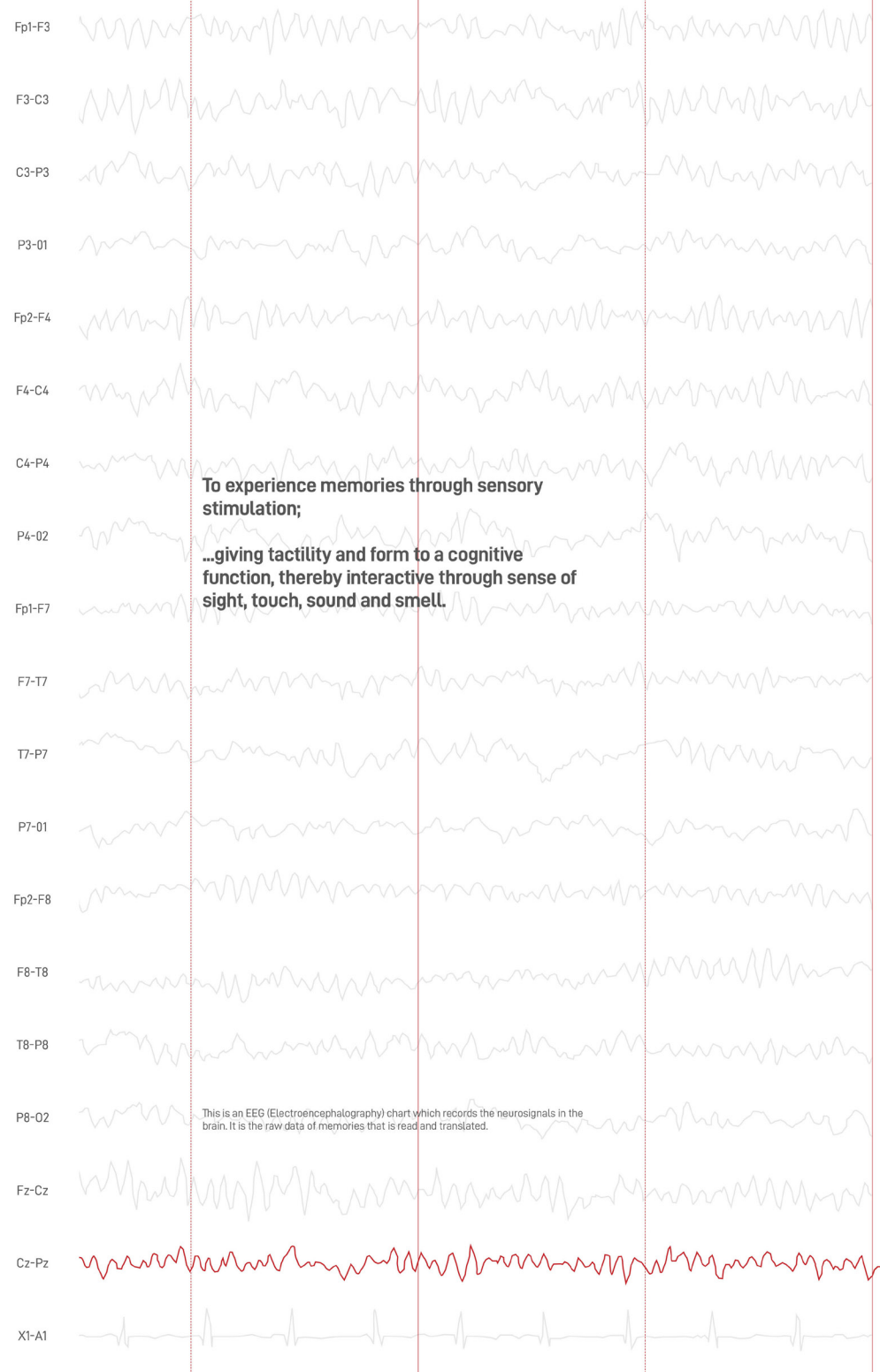
TRANSFIGURED MEMORIES

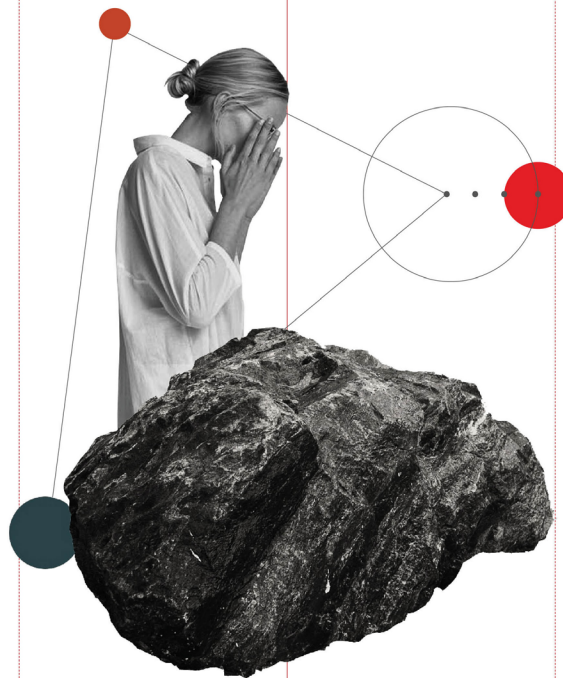


Cradled in a unique site surrounded by ephemeral elements like water beneath the feet and the skies above, this sanctuary is designed to guide the visitors in an **act of self-reflection**. It is an **architectural pilgrimage** from the pier (an action which resonates with the past events on the site - a threshold) to a beacon which **translates memories and dreams into a sensory stimulation** through the use of cloudscares as a tool of transfiguration; switching between the realm of the conscience and reality. Thereby **placing the mind in a state of ecstasy** which derives itself from the depth of memory and personal conviction.

Anyone and everyone has an impactful story to tell. By **sculpting a state of anonymity**, but also **proclamation** through the use of ever changing cloudscares, this intervention becomes an **architectural reserve of memories**; a database filled with the most intimate moments of both citizens and immigrants alike who choose to tell their story.

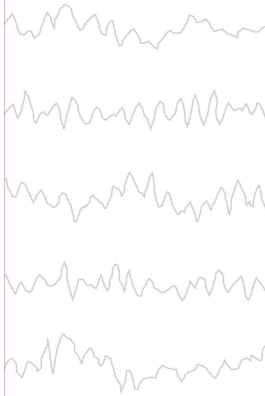






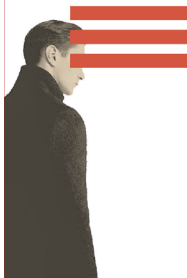
The genesis of this sanctuary came from envisioning a place, where both the citizens and immigrants alike can expound on their story. A place where one's most intimate instances of time are told publicly, yet anonymously. The transient medium of clouds to decipher the memories helps bind together the metaphysical connection.

Through machine learning of the cognitive functions, the sublime connection between technology and human intimacy is brought to life. To be a sanctuary of everyone's memories, for time to come.



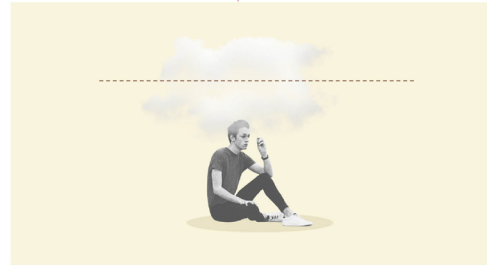
Engram

Any pivotal memories in life revolves around emotions. In here, people are encouraged to document their story by recollecting long term memories and dreams. These memories are recorded in minutes using a 32 channel Emotiv which scan the neurosignals produced in the brain.



Process

The neurosignals evoked by the memories result in emotions which are transduced into binary signals as height maps. This data is relayed to sensors placed in the architecture. This is carried out by isolating activation points corresponding to short and long term memories.



Vexation,
conditions clouds
that are textural and
gloomier in nature.



Melancholy,
conditions clouds
much heavier in
quality and closer
to the ground plane.

Translate

The incoming signals form the cloudscape by imitating the emotion. The signals control the hot dry, cold dry and humid air needed to form the transient elements. Interacting with these clouds become a poetic engagement with your memory.

Different memories evoke different moods, and that state of mind is evident in the cloudscape through their form, speed and the way in which light interacts with it.



Happy,
conditions a puffy
and fluffy cloud in
response.





RESERVE OF MEMORIES



32 channel EEG sensor; when placed over the head, records the electrical impulses of the brain and translates it into clouds at the beacon.





