

2019 CITATION

Eric Smith

LYCEUM

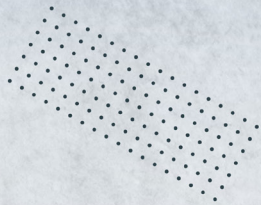
A traveling fellowship in Architecture



The Pier That Shelters Me

Reintroduce

the pier will be represented through a grid of pier columns



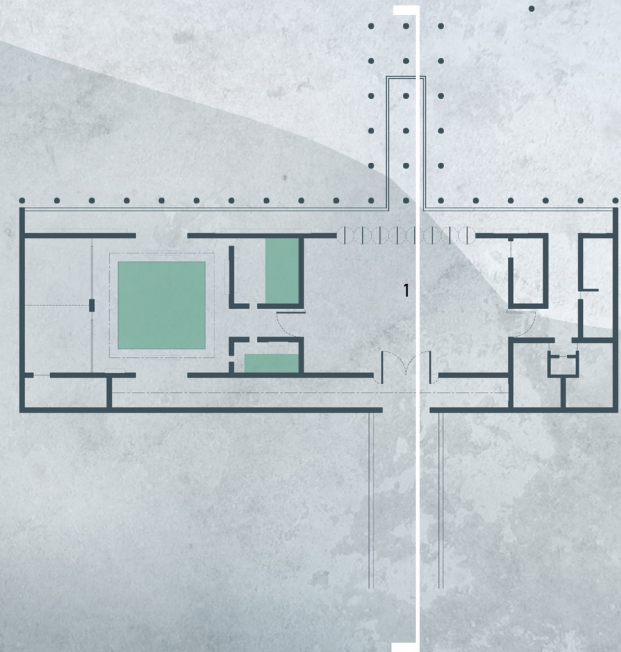
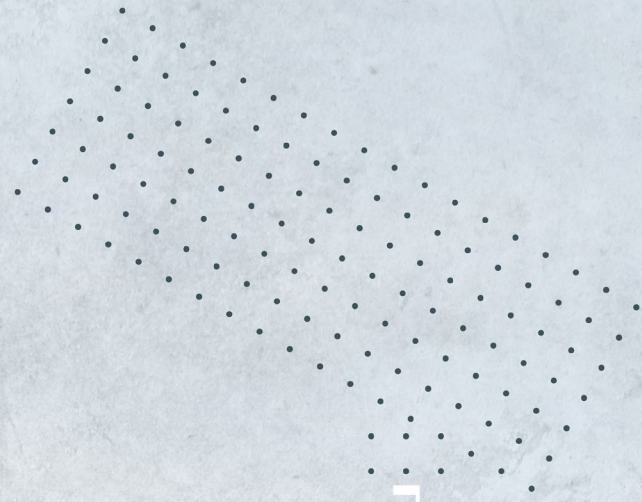
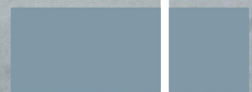
Recreate

The shape of the Sanctuary will mimic the original footprint of the dock



Reconnect

these spaces will be bonded through visual and physical that ties both elements back to the site



Approaching the structure, sandblasted concrete aims to give the appearance of a monolithic mass. The beige and white color scheme of the concrete serve to reflect the colors of the existing buildings on site and around the island.



As the pivot walls give way, an immediate visual connection is formed between the land and old dock, the once monolithic mass gives way to an old pathway.



The hallway adjacent to
the Assembly entrance
leads towards the
Sanctuary Courtyard.
The light acts as a subtle
guide down the long
path.



The threshold into
the Assembly Space is
crossed and the past
is now framed behind
visitors as they look
forward on.







