

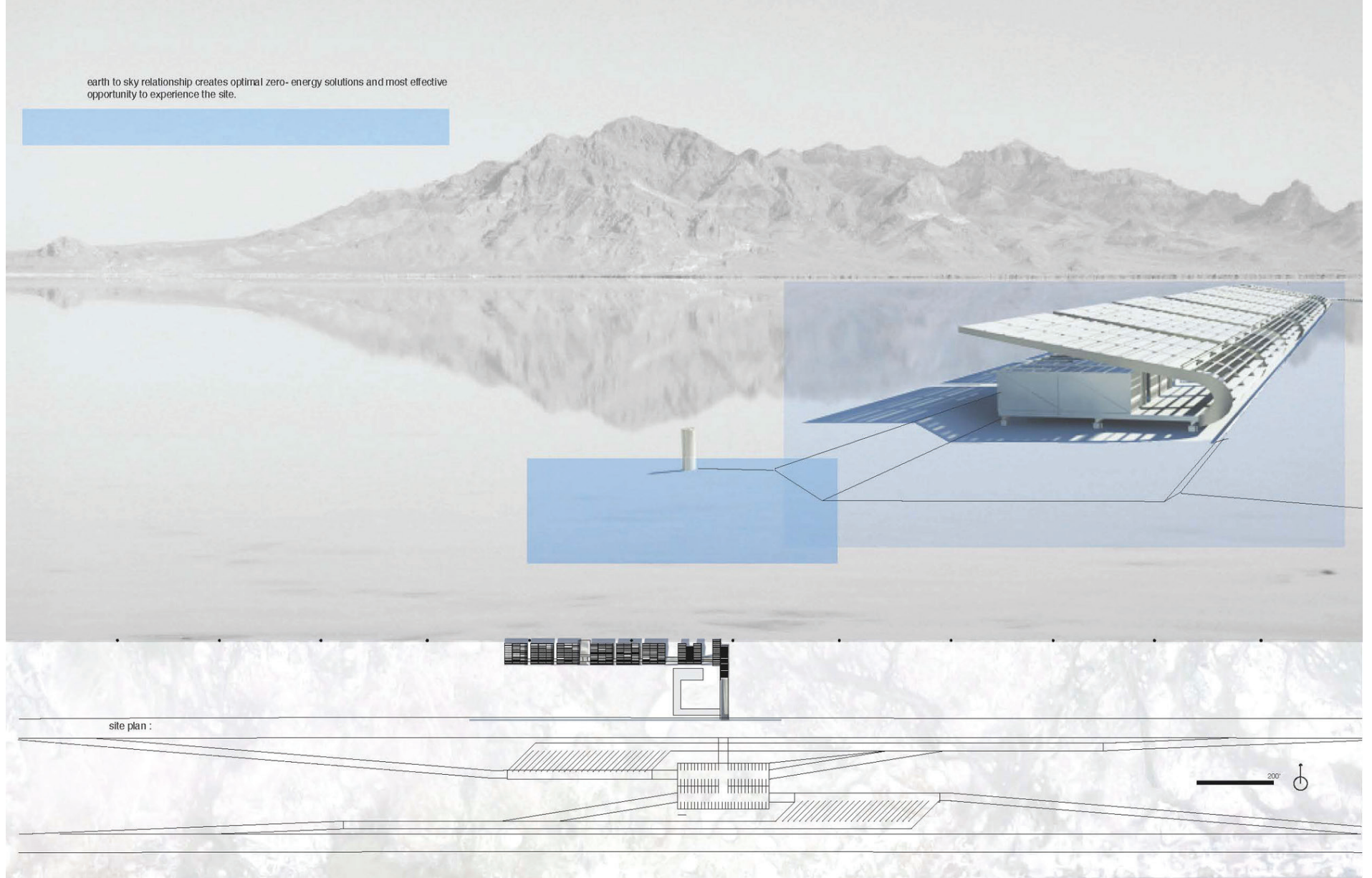
2011 CITATION

Joseph Felix

LYCEUM

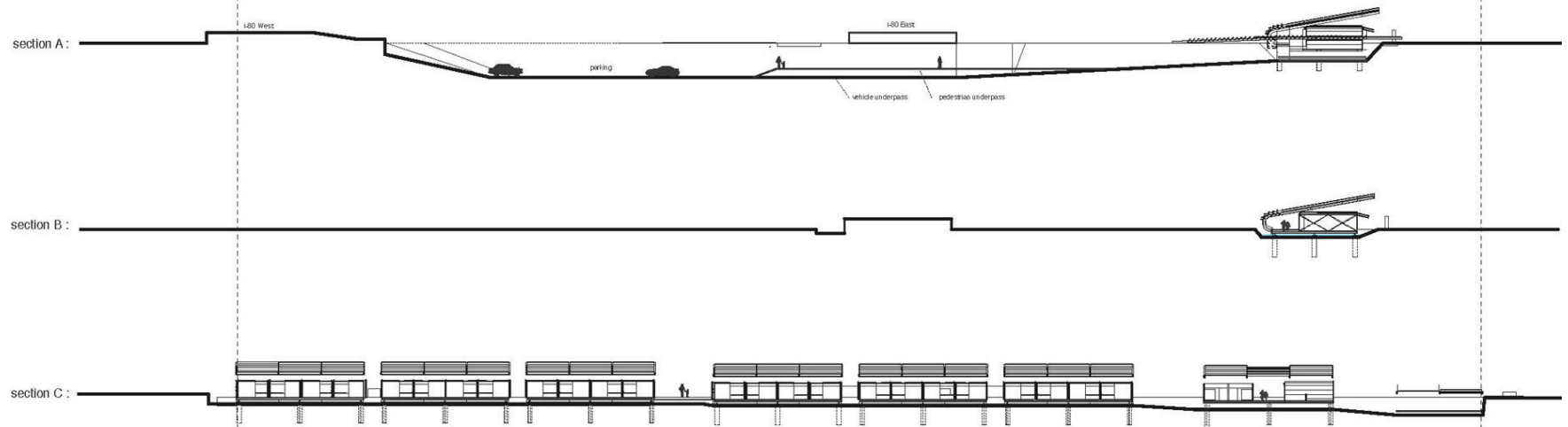
A traveling fellowship in Architecture

earth to sky relationship creates optimal zero- energy solutions and most effective opportunity to experience the site.

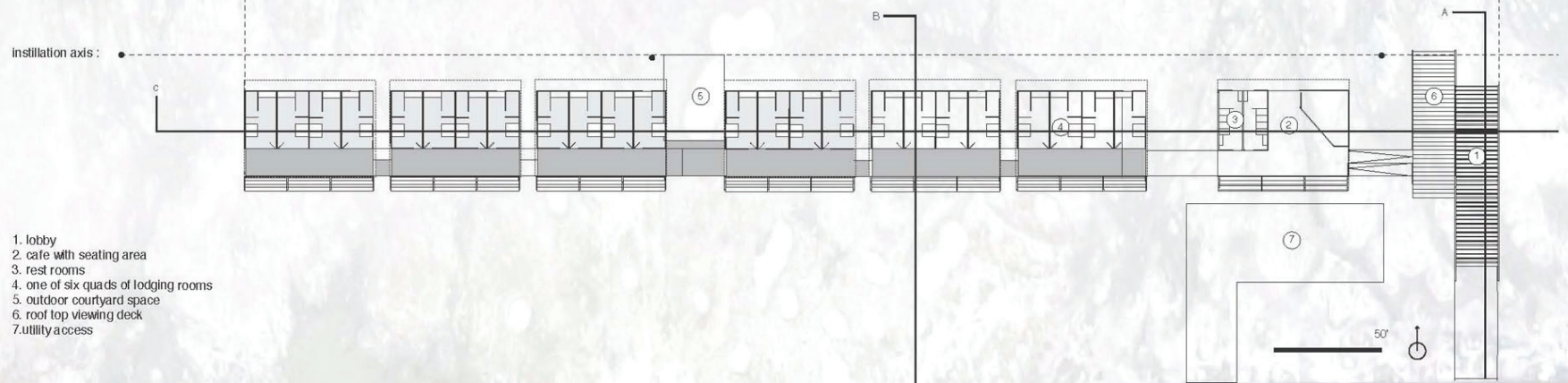


site:

depression into earth creates an opportunity to collect water from annual floods and store it while distillation process takes place.



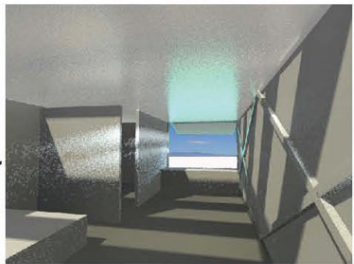
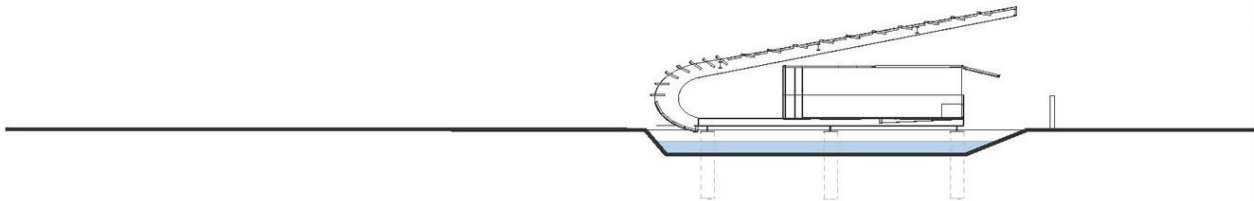
floor plan:



site procession:

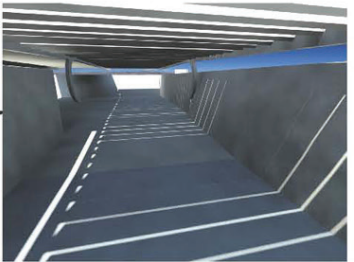
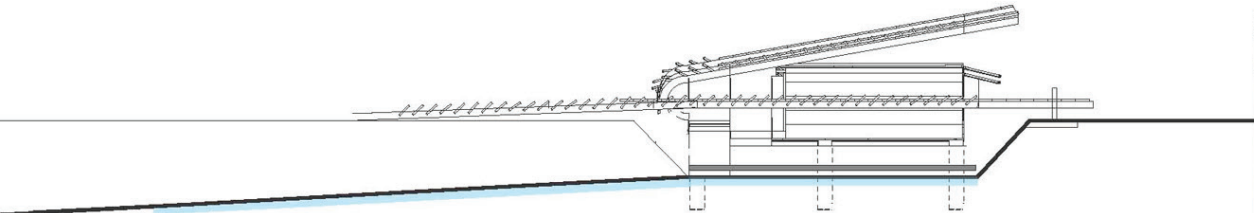
the site contains a gradual elevation change as procession continues deeper into the program.
this quality is able to connect to the original concept of the earth to sky relationship

section D :



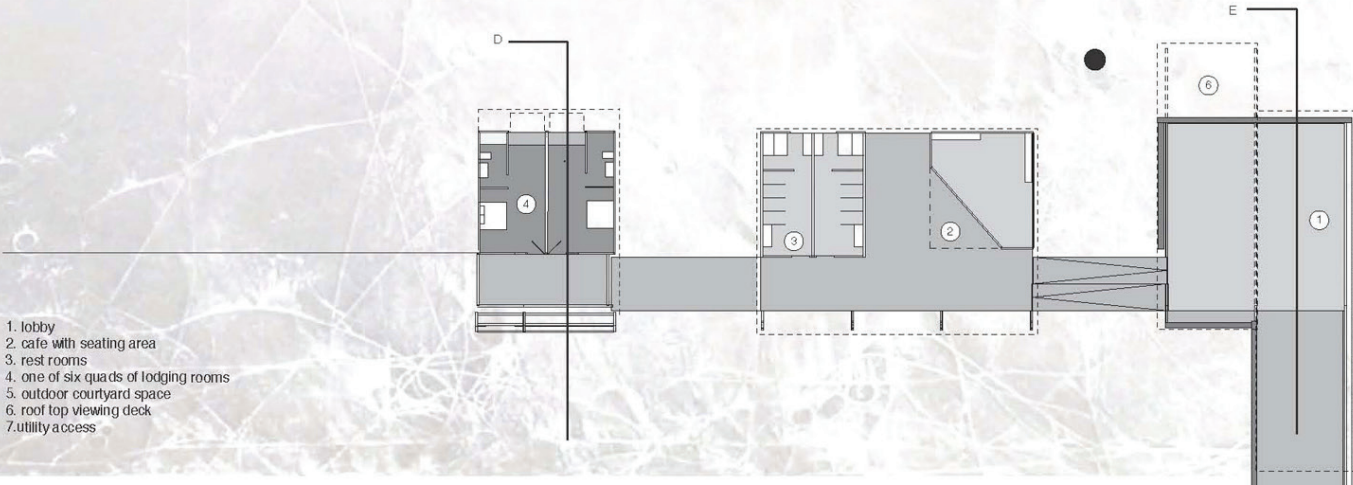
view of salt flats from room

section E :

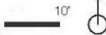


approach to lobby space at sub-grade

cafe /lobby plan:



- 1. lobby
- 2. cafe with seating area
- 3. rest rooms
- 4. one of six quads of lodging rooms
- 5. outdoor courtyard space
- 6. roof top viewing deck
- 7. utility access

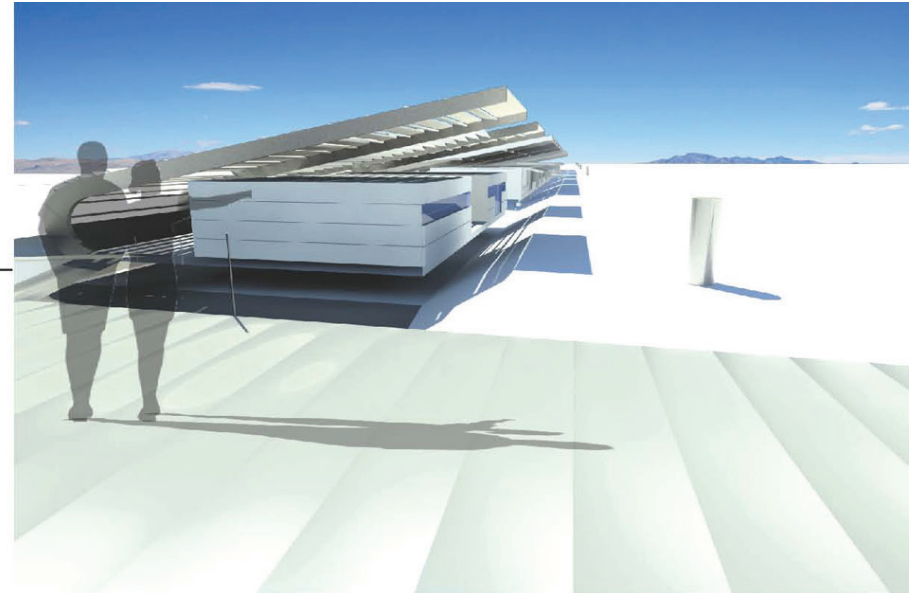


experience of place:

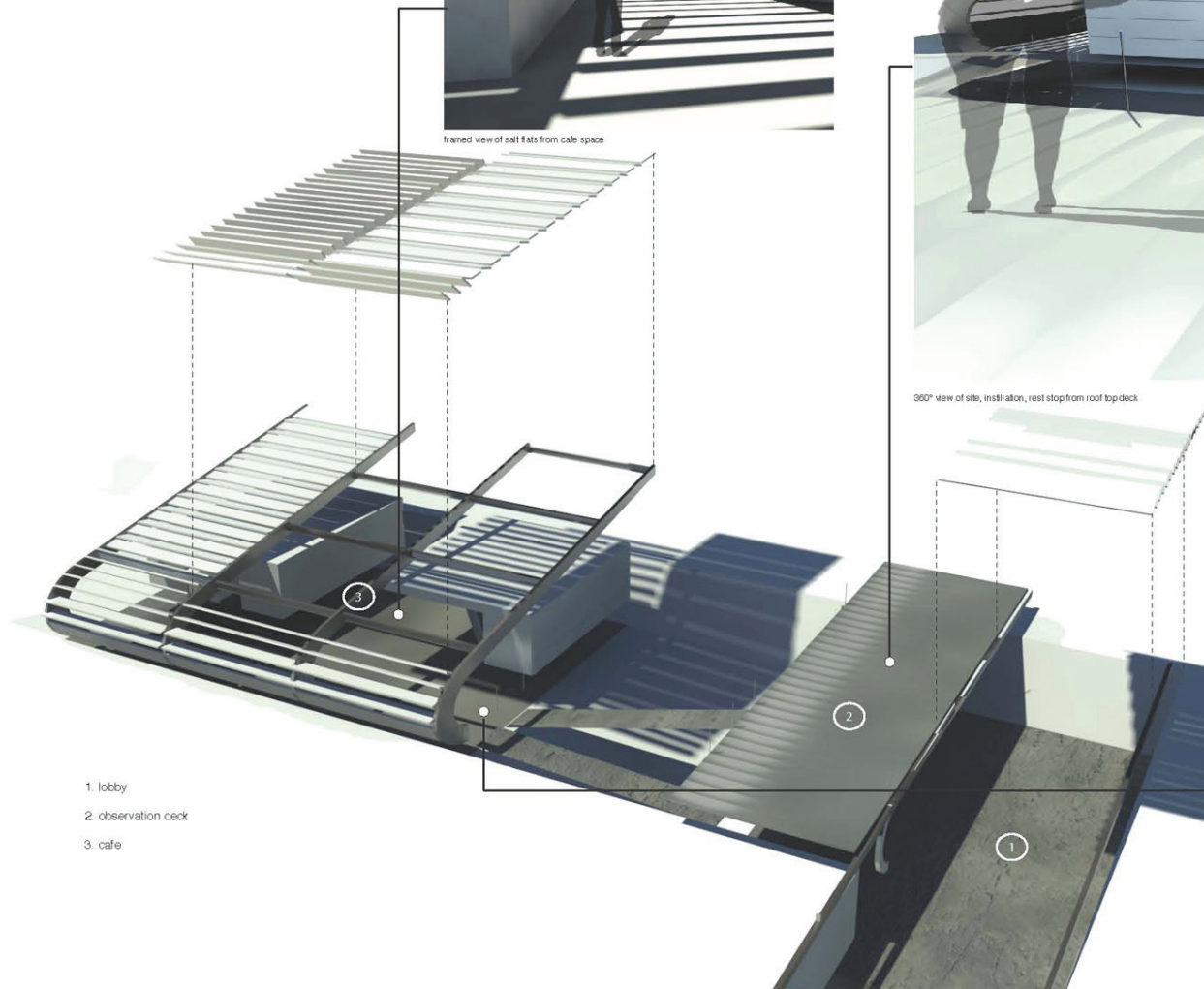
through out the design there are areas of focus so that one may observe important characteristics of the site. roof top deck offers 360 view capturing the vastness of the site while also intersecting the installations axis.



framed view of salt flats from cafe space



360° view of site, installation, rest stop from roof top deck



1. lobby

2. observation deck

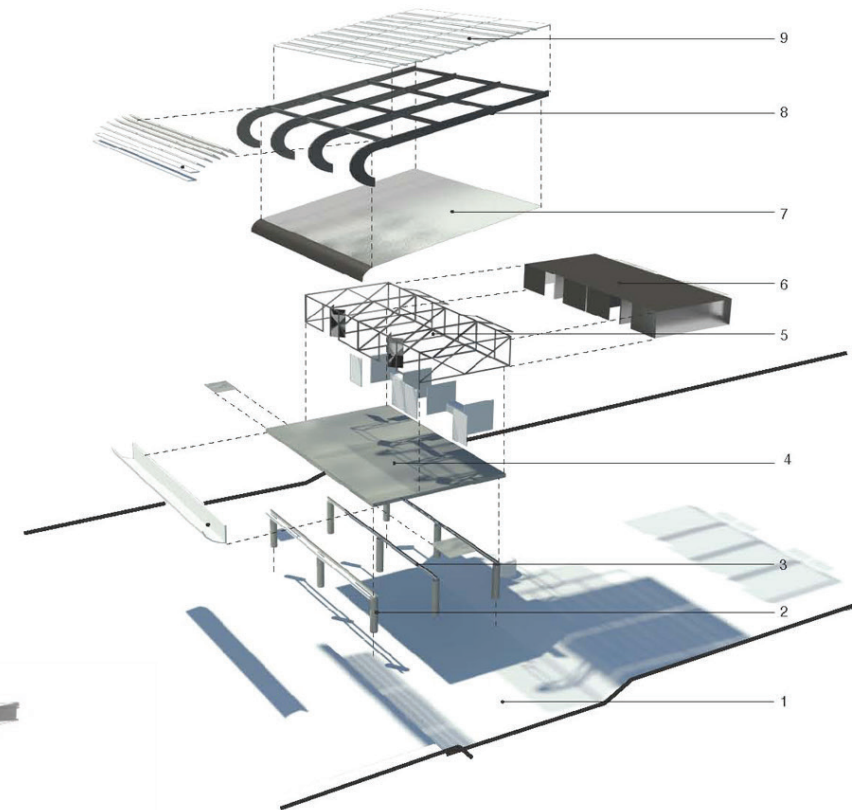
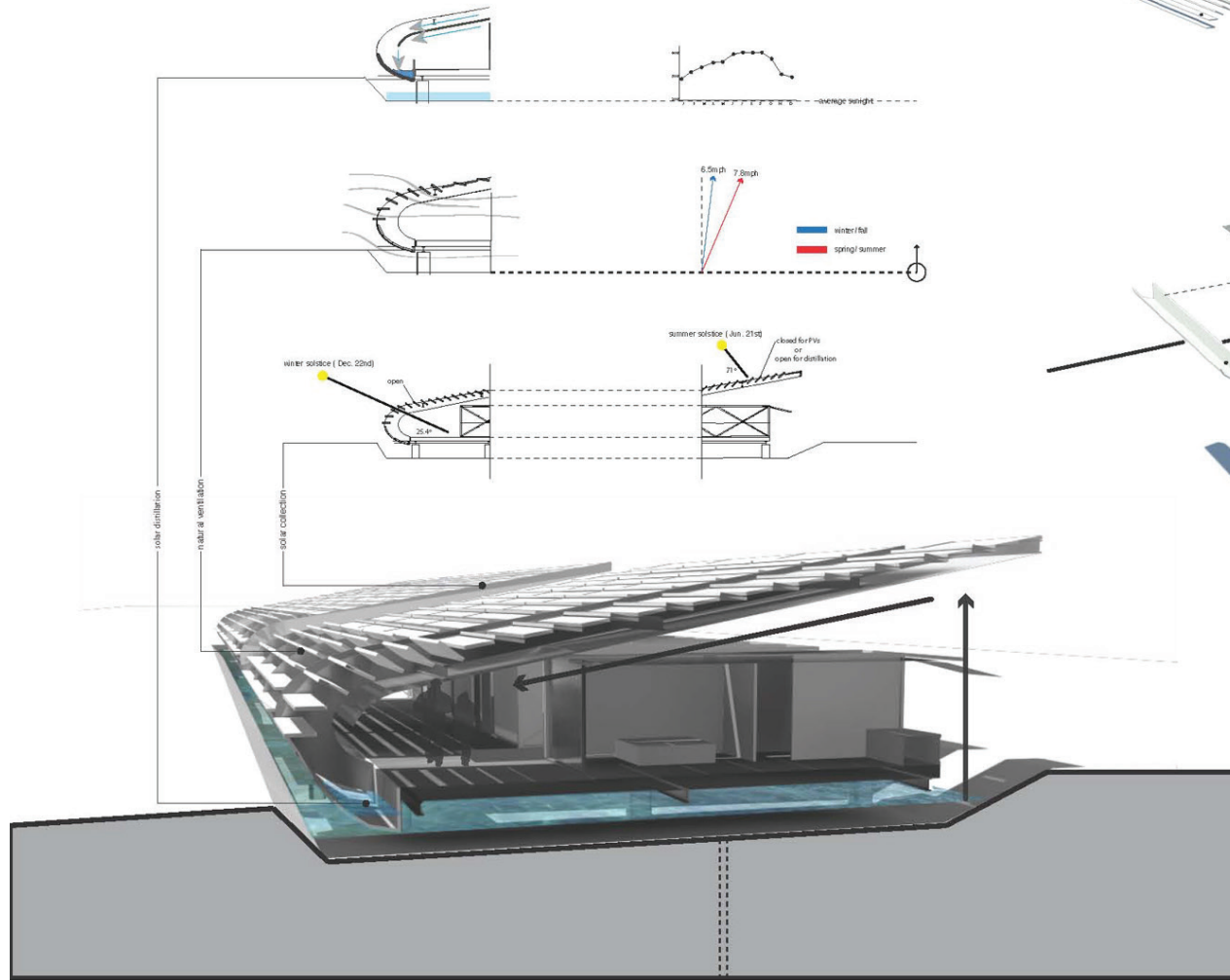
3. cafe



relationship of interior to exterior along main corridor

building functions:

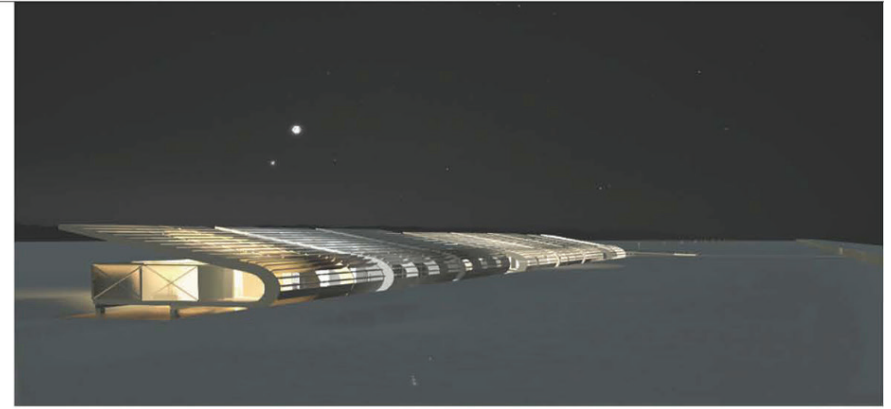
Form created to take advantage of large amount of salt water that annually flood site. with an operable skin system building is able to allow solar radiation in to create solar distillation. skin and frame systems also allows for natural ventilation and solar gain during the appropriate months.



- 1 ————— excavation for water collection
- 2 ————— piles to elevate structure above flooding
- 3 ————— steel grid for platform support
- 4 ————— passive flooring system
- 5 ————— steel frame system for rooms
- 6 ————— tyvek material for room enclosure
- 7 ————— tyvek material for water collection and solar gain
- 8 ————— overhead steel structure
- 9 ————— louver panel skin system

design summary:

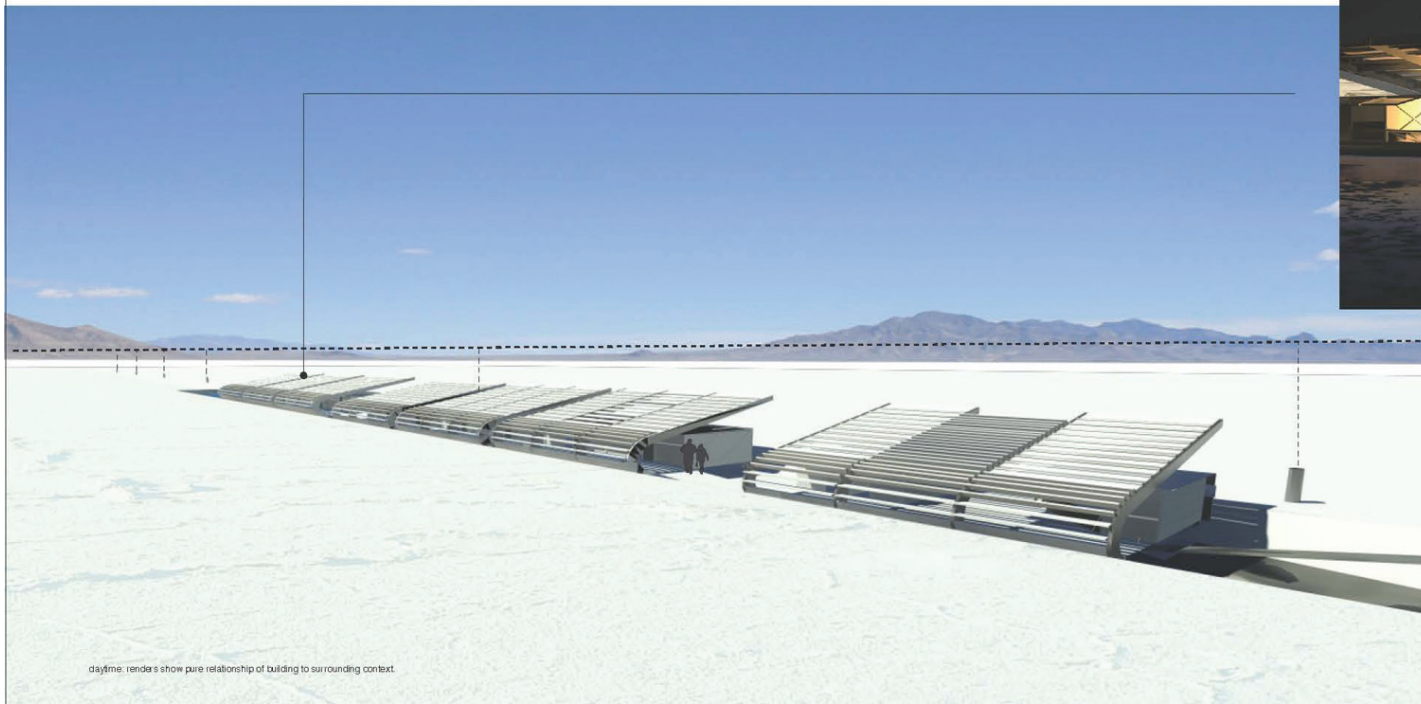
as the proposed art instillation on the Bonneville Salt Flats exposes the curvature of the earth, this facility aims to exposed the instillation through an earth to sky relationship. as one proceeded through the site they are sequentially presented new views to help them understand the true vastness pureness of the surrounding environment.



night: renders expose the transparency of the lysek which is used for both water proofing and passive solar gain.



----- Art instillation: Earths curvature:



daytime: renders show pure relationship of building to surrounding context.