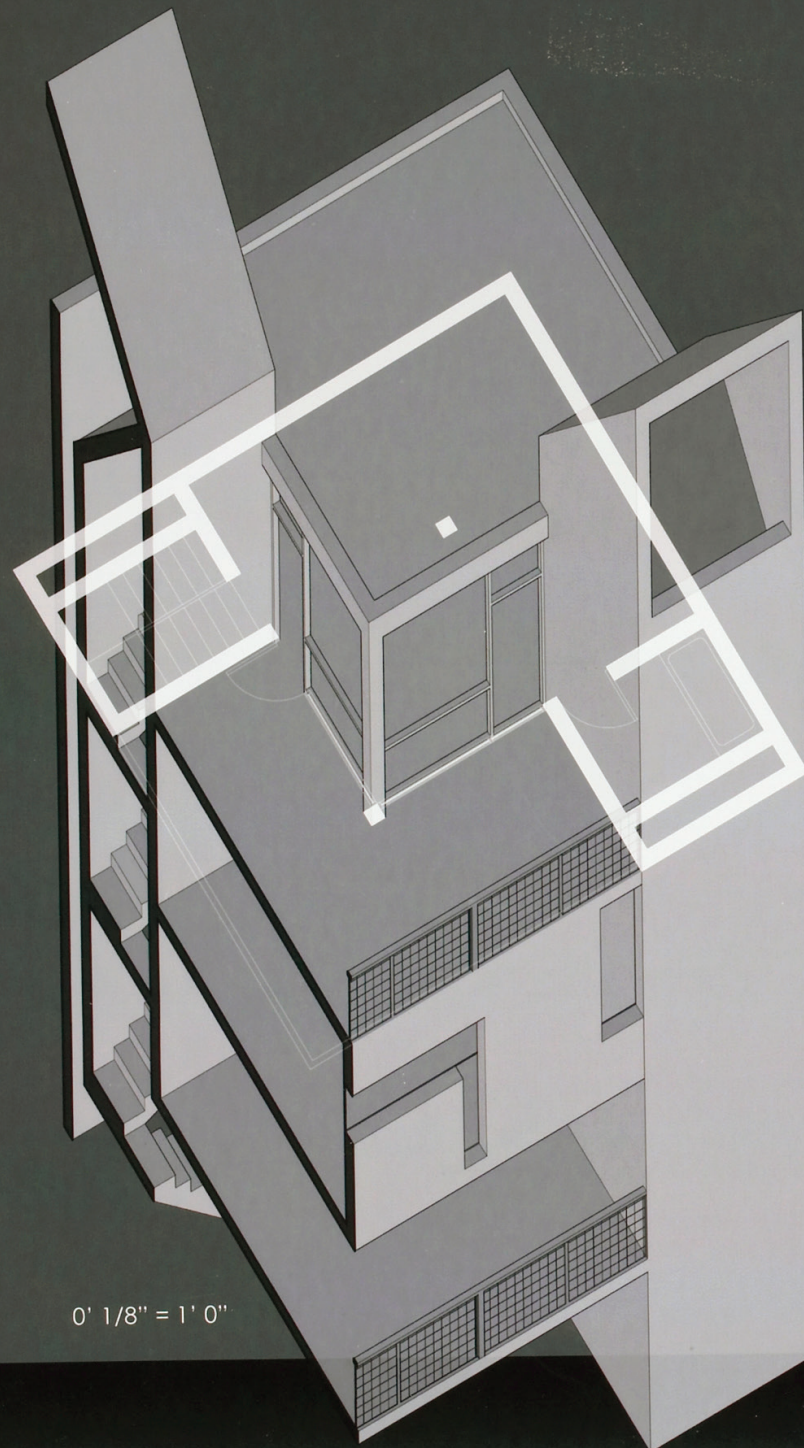


2004 MERIT

Nicholas Potts

LYCEUM

A traveling fellowship in Architecture



0' 1/8" = 1' 0"

INHABITING THE WIND

The twenty lodge buildings capitalize on predictable coastal devices catch North and South winds and convert them via the terraces allow breezes to flow through individual units as well openings in the concrete walls of the units permit oblique view the landscape .

